

## APV 3 Effect Plate Evaporator

<b>Mfg: APV</b>	<b>Model: 302, 303 and 304</b>
<b>Stock No. RAAF111.330</b>	<b>Serial No.</b>

APV 3-Effect Plate Evaporator. First Effect Evaporator, Model: 302, number of plates: 84, plate pack length: 30 in., inlets: (1) 2 in. dia. tube (product), (1) 4 in. dia. ANSI class 150 flanged port, outlets: (1) 1-1/2 in. dia. S-line, (1) 2 in. dia. NPT, (1) 22 in. W x 8 in. H, (1) 10 in. dia. ANSI class 150 flanged port (to second effect). APV First Effect Horizontal Separator- 150 Gallon, W.O: 13110, test vacuum: full, inlets: (1) 22 in. W x 8 in. H infeed, outlets: (2) 3 in. dia. S-line fittings (product).

Second Effect Plate Evaporator, Model: 303, number of plates: 96, plate pack length: 34 in., inlets: (1) 2 in. dia. tube (product), outlets: (1) 1-1/2 in. dia. S-line, (1) 2 in. dia. NPT, (1) 22 in. W x 11 in. H, (1) 10 in. dia. ANSI class 150 flanged port (to third effect). APV Second Effect Horizontal Separator- 250 Gallon, W.O: 13111, working vacuum: 19 in. Hg, test vacuum: full, inlets: (1) 22 in. W x 11 in. H infeed, outlets: (2) 3 in. dia. S-line fittings (product).

Third Effect Plate Evaporator, Model: 304, number of plates: 148, plate pack length: 52 in., inlets: (1) 2 in. dia. tube (product), outlets: (1) 1-1/2 in. dia. S-line, (1) 2 in. dia. S-line, (1) 36 in. W x 15 in. H, (1) 10 in. dia. ANSI class 150 flanged port (from second effect). APV Third Effect Horizontal Separator- 750 Gallon, W.O: 13110, working vacuum: 26-1/2 in. Hg, test vacuum: full, inlets: (1) 22 in. W x 11 in. H, outlets: (2) 3 in. dia. S-line fittings (product).

APV Shell and Tube Condenser, S/N: 13272, Nat'l Bd: 494, MAWP shell side: 60 psia @ 150 °F, test pressure shell side: 90 psig @ 70 °F, MAWP tube side: 1.0 psia @ 102 °F, test pressure tube side: 22.5 psig @ 70 °F, inlets/outlets: (1) 2 in. dia. ANSI class 150 flanged port, (1) 2 port, (1) 6 in. dia. ANSI class 150 flanged port.

Stainless Steel Balance Tank- 40 Gallon. Inlets: (1) 1-1/2 in. dia. S-line, (1) 2 in. dia. S-line, (1) 2-1/2 in. dia. S-line. Outlets: (1) 1-1/2 in. dia. FNPT, (1) 2 in. dia. S-line.

Pro Controls Control Panel. S/N: 97101. Power supply: 120 V, 15 amps. (2) ABB Commander Process controllers for temperature and vacuum. Overall dimensions: 31 in. L x 13 in. W x 72-1/2 in. H.

(3) APV Puma Centrifugal Pump. S/N's: U337, D264, and U121. U.S. Motor 5 hp, 3600, 208-220/440 V, 15.5-14.3/7.15 amps, 60 Hz, 3 phase. Inlets: 3 in. dia. Outlets: 2 in. dia. Overall dimensions: 29 in. L x 20 in. W x 17 in. H.

APV Puma Centrifugal Pump. S/N: U128. Sterling Electric Motor, 3 hp, 3600 rpm, 440 V, 3.9 amps, 60 Hz, 3 phase. Inlets/outlets: (2) 2 in. dia. Overall dimensions: 27 in. L x 18 in. W x 19 in. H.

(2) Peerless Centrifugal Pumps. Model: F1-810AP-BF, S/N: 921040-K. General Electric Motor, 1 hp, 1751 rpm, 208-220/440 V, 4.8/2.4 amps, 60 Hz, 3 phase. Delco Motor, 1.5 hp, 1725/1730 rpm, 208-220/440-230/460 V, 4.6/2.3 amps, 60 Hz, 3 phase. Inlets: (1) 2 in. dia. FNPT. Outlets: (1) 1 in. dia. FNPT. Overall dimensions: 41 in. L x 12-1/2 in. W x 18 in. H.

Durco Mark II Centrifugal Pump. Model: Mark II. S/N: 81306. Size: 3x1-1/2-6/60. Alloy: 316 stainless steel. Seal option: double mechanical seal with flushing. Maximum working pressure: 275 psi @ 100 °F. U.S. Motor, 7.5 hp, 1800 rpm, 208-220/440 V, 22.3-21.0/10.5 amps, 60 Hz, 3 phase. Overall dimensions: 53 in. L x 18 in. W x 20 in. H.

Worthington Centrifugal Pump. Model: D1021. S/N: Y712643. Size: 1.5x1x6.5. Material: 316 stainless steel. Impeller diameter: 6.5 in. Overall dimensions: 33 in. L x 11 in. W x 13 in. H.

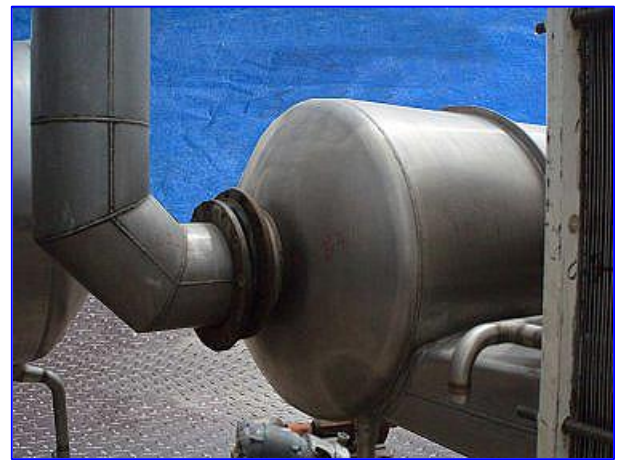
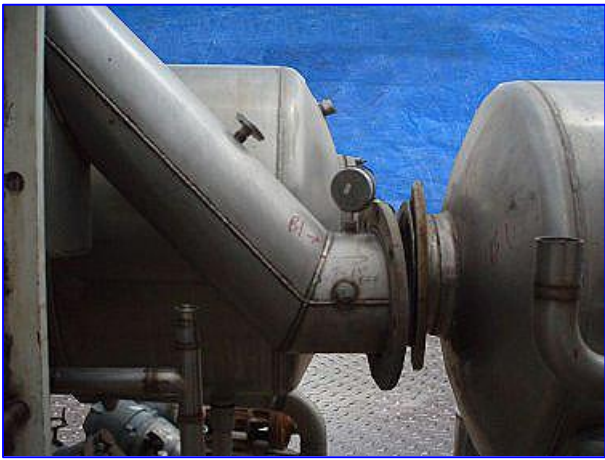
Graham Liquid Ring Vacuum Pump. Model: 1V4216/fnz. S/N: 93775-1. Sterling Electric Motor, 10 hp, 1740 rpm, 208-230/460 V, 28.5-25.8/12.9 amps, 60 Hz, 3 phase. Inlets: (1) 3/4 in. dia. (service fluid), (1) 2 in. dia. pipe. Outlets: (1) 1-1/2 in. dia. FNPT. Overall dimensions: 54-1/2 in. L x 25 in. W x 48 in. H.

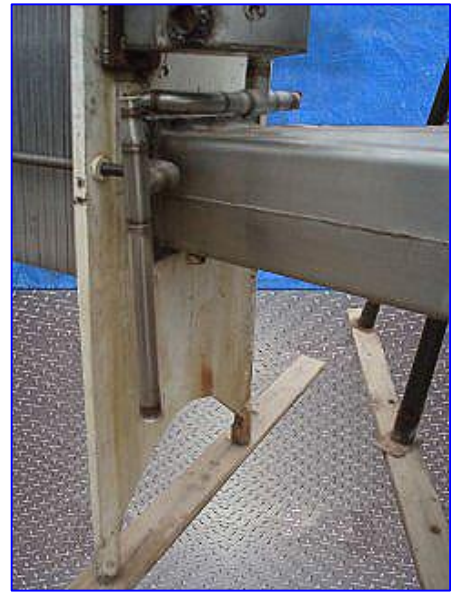
Industrial Steam Inc. Centrifugal Water Pump. Model: 16-60955. S/N: 76-5146B. Capacity: 750 gpm @ 78 ft. Reliance Motor, 25 hp, 1765 rpm, 230/460V, 64/32 amps, 60 Hz, 3 phase. Intel/outlet: (1) 8 bolts 6 in dia flange. Overall dimensions: 40 in. L x 30-1/2 in. W x 24 in.

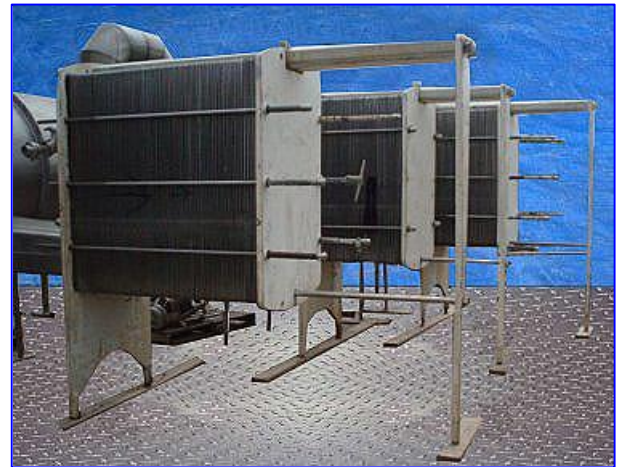






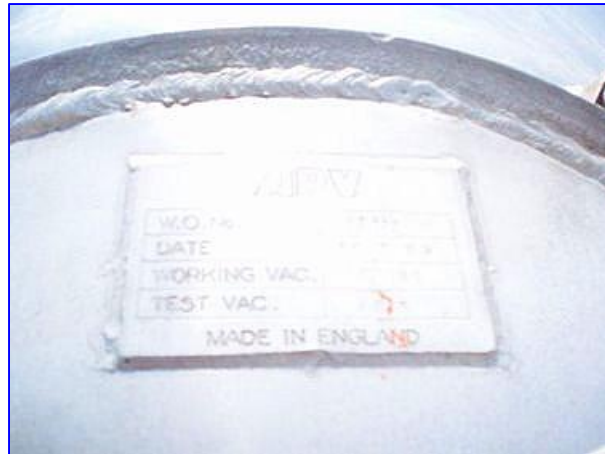
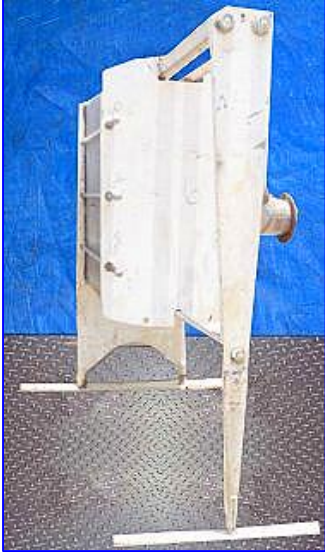
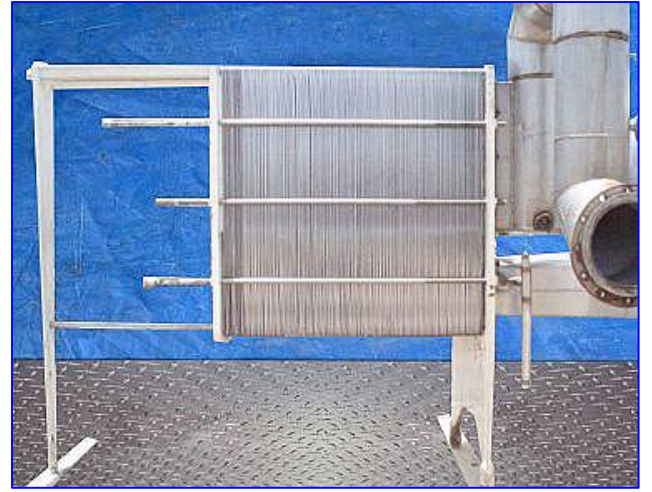
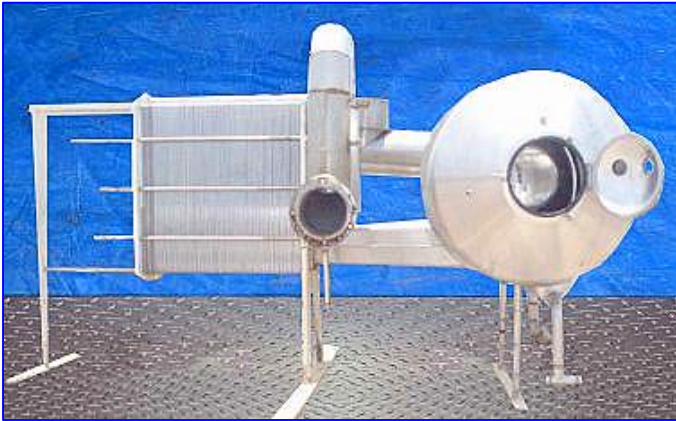
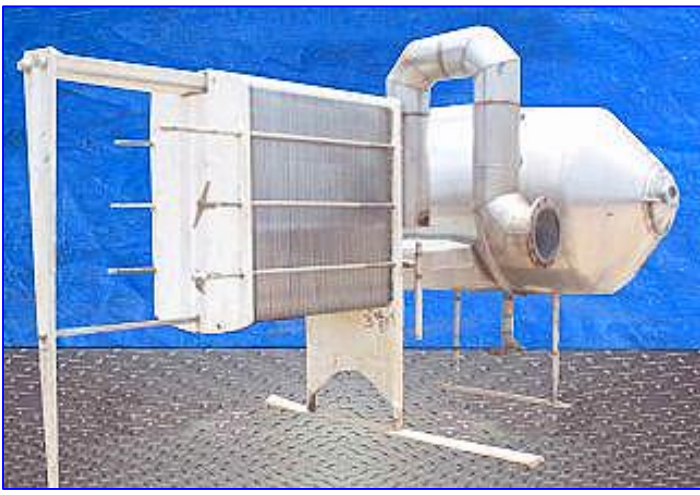


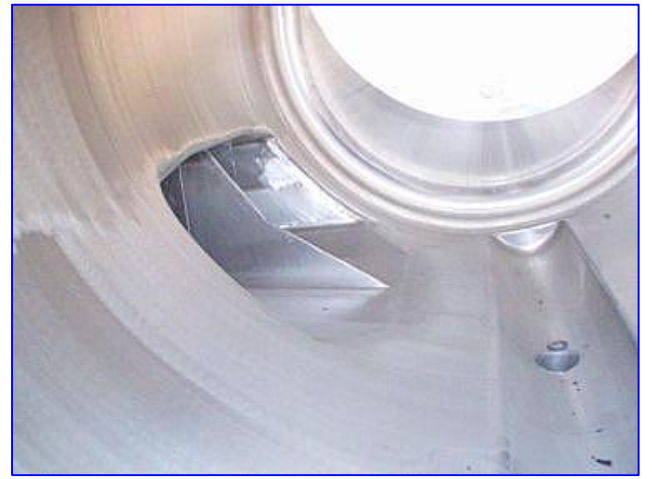


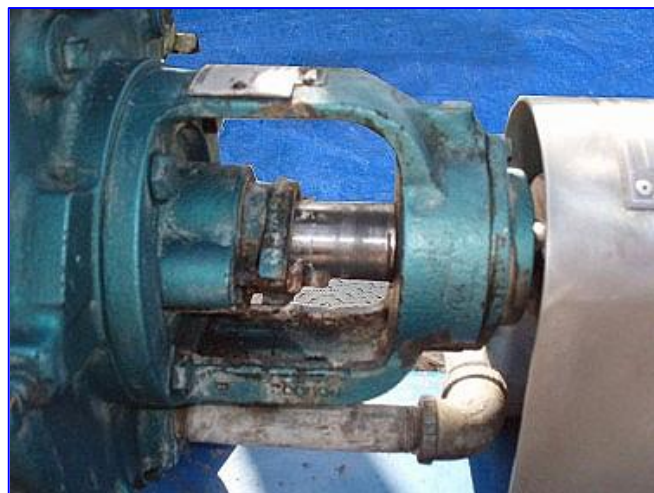
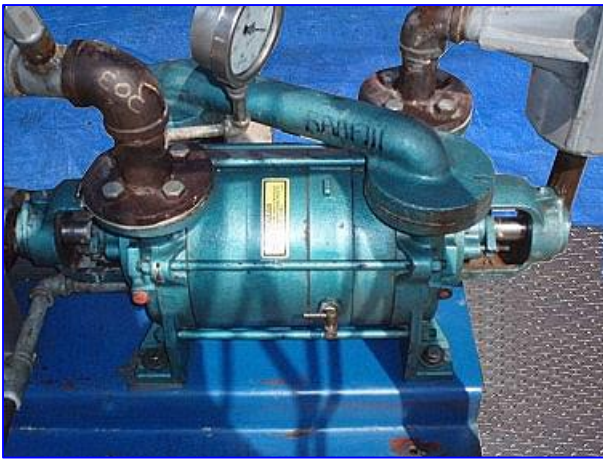
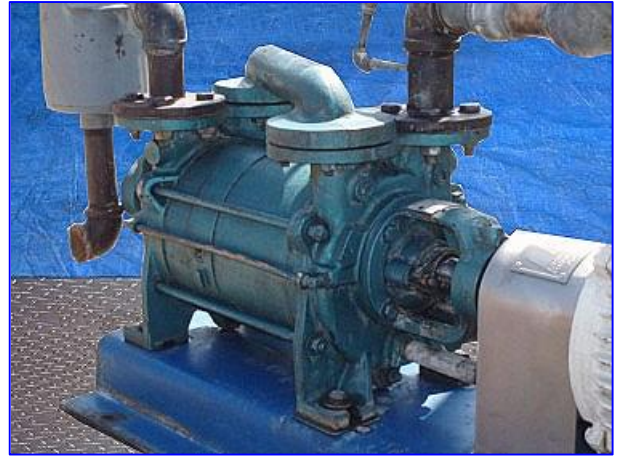




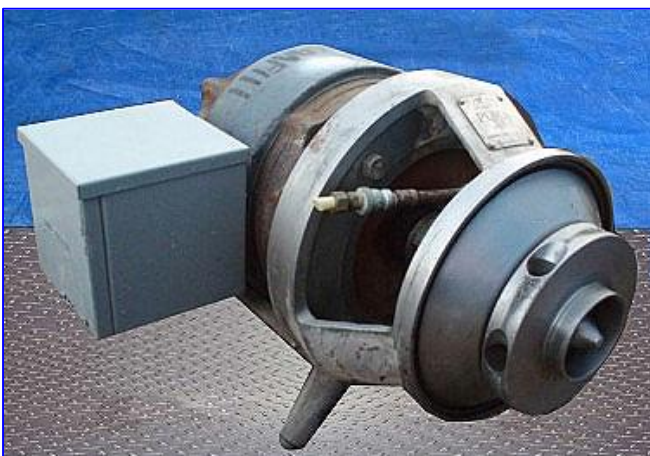
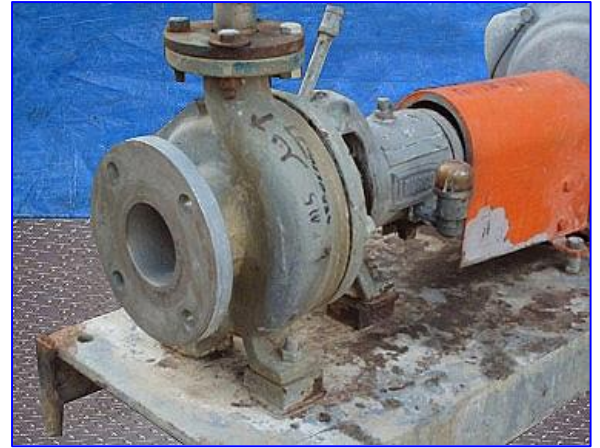


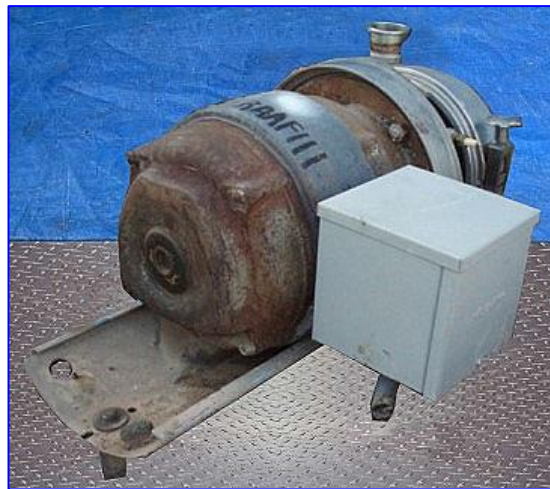
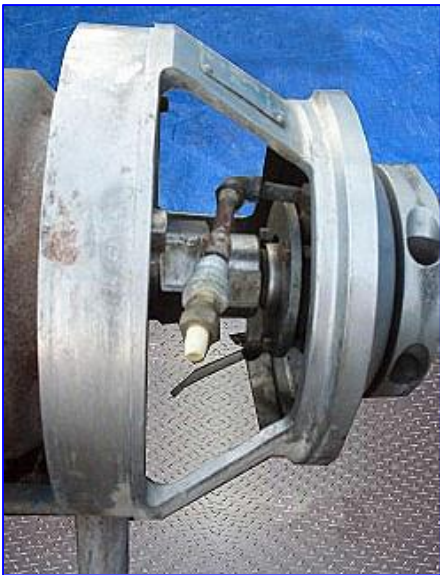
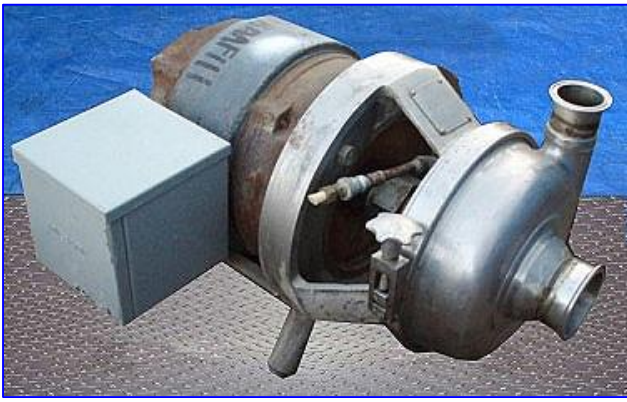


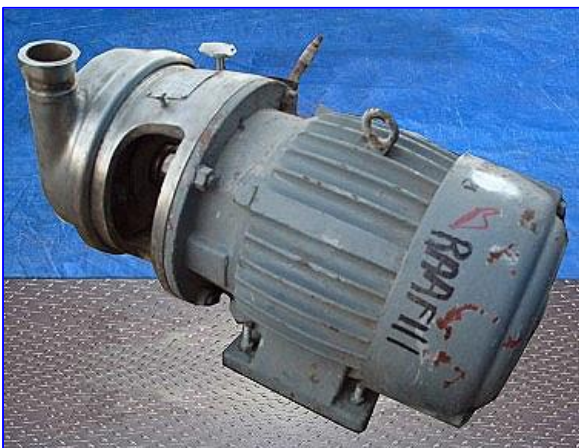
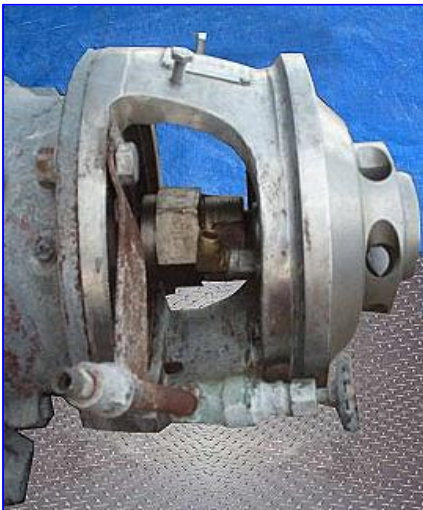
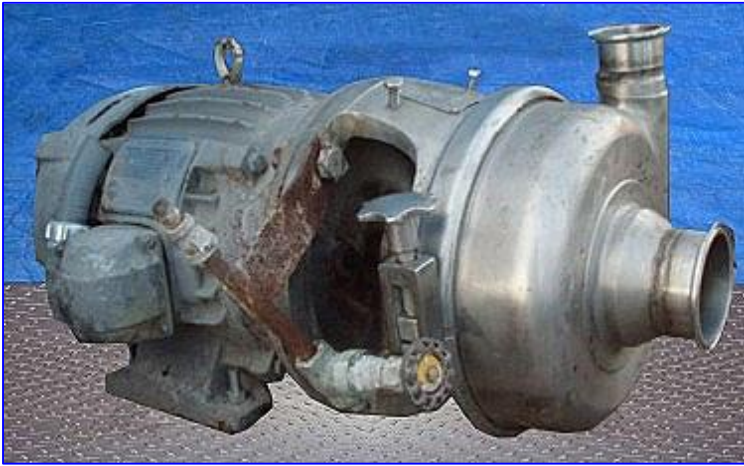
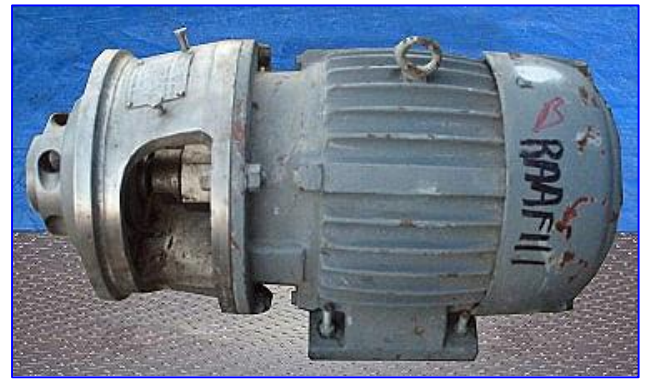
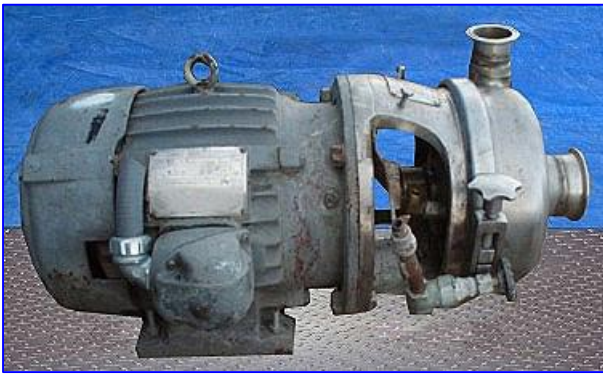












TRADE MARK  
THE A.P.V. COMPANY LTD. ENGLAND.  
**PURIA**  
SIZE 2-3  
SERIAL NO. U337  
MADE IN ENGLAND

