

Teledyne Laars Gas-Fired Hot Water Boiler- 27 HP

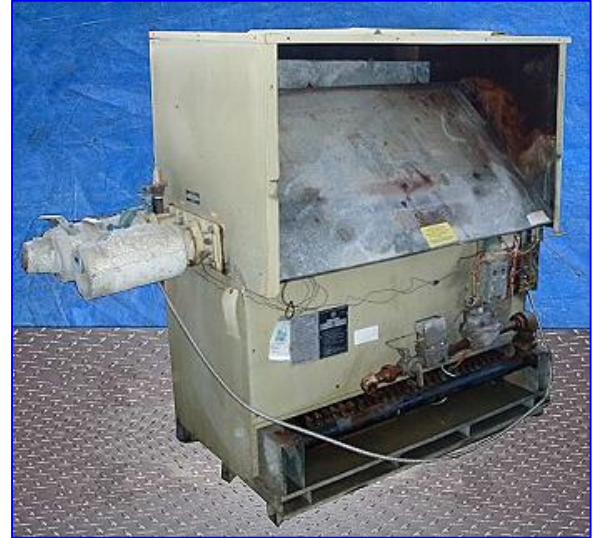
Mfg: Teledyne Laars

Model: NQ-925-0-N-06-3

Stock No. 30.RB0044bb.10

Serial No. 8090383

Teledyne Laars Gas-Fired Hot Water Boiler- 27 HP. Model: NQ-925-0-N-06-3. S/N: 8090383. Natural gas operated. Both (input): 925,000. Both (output): 740,000. Bell & Gossett Centrifugal Pump, Model: 1522I, S/N, QF4D5B, size: 1.5AAB5.25FF. Baldor Industrial Motor, 3/4 hp, 1725 rpm, 115/208/230 V, 10.8/5.7-5.4 amps, 60 Hz, single phase. Inlets: (1) 1 in. dia. NPT (female, gas), (1) 2 in. dia. pipe (water). Outlets: (1) 2 in. dia. pipe (water), (1) 14 in. dia. vent. Overall dimensions: 63 in. L x 35 in. W x 39 in. H.





NATIONAL BOARD
 MAX. WP. WATER 160 P.S.I.
 MIN. V. CAPACITY 185 GPM
 HEATING SURFACE 100 SQ. FT.
 SERIAL NUMBER 1000000000

MAXIMUM PERMISSIBLE GAS SUPPLY PRESSURE
 Piping - 1/2" W.C. Natural - 2" W.C.
MINIMUM PERMISSIBLE GAS SUPPLY PRESSURE
 Piping - 1/2" W.C. Natural - 1/2" W.C.
NORMAL MANIFOLD PRESSURE
 Piping - 1/2" W.C. Natural - 4" W.C.

FOR SAFETY, ALWAYS IN ACCORDANCE WITH THE A.S.M.E. CODES
 AND THE NATIONAL BOARD CODES, THE MANUFACTURER'S INSTRUCTIONS AND THE LOCAL A.S. PERMITS,
 THE BOILER SHALL BE INSTALLED IN ACCORDANCE WITH THE A.S.M.E. CODES AND THE NATIONAL BOARD CODES.
 THE BOILER SHALL BE INSTALLED IN ACCORDANCE WITH THE A.S.M.E. CODES AND THE NATIONAL BOARD CODES.

**MINIMUM CLEARANCES BETWEEN JACKET AND ANY
 OTHER SURFACE IN AREA OF BOILING 24"**
INSTALLATION OF MANIFOLD PERMISSIBLE FLOODS ONLY

ELECTRICAL CHARACTERISTICS
 240 V. 1 PH. 15 AMP. 120/240 V.

WITH APPROVED ACCESSORIES, IT SHOULD BE PERFORMED BY
 A QUALIFIED INSTALLER OR SERVICE PERSONNEL.
 ALWAYS FOLLOW THE MANUFACTURER'S INSTRUCTIONS ON THE FACTORY
 LABELS AND MANUALS.

WATTELINE LAARS
WATTELINE LAARS

GAS FIRED HOT WATER BOILER

1000000000

TYPE	MODEL	DATE	MADE	2000
1000000000	1000000000	1000000000	1000000000	1000000000

INSTRUCTIONS TO LIGHT OR RE-LIGHT BOILER -

1. TURN OFF POWER TO BOILER
2. TURN THERMOSTAT TO LOWEST SETTING
3. TURN OFF MANUAL MAIN GAS VALVE AND MANUAL PILOT VALVE AND WAIT 5 MINUTES
4. TURN ON MANUAL MAIN GAS VALVE AND MANUAL PILOT VALVE
5. TURN ON POWER TO BOILER
6. SET THERMOSTAT TO DESIRED TEMPERATURE SETTING

TO TURN OFF BOILER

1. TURN OFF POWER TO BOILER
2. TURN THERMOSTAT TO LOWEST SETTING
3. TURN OFF MANUAL MAIN GAS VALVE AND MANUAL PILOT VALVE