

UNIT CONSTRUCTION

HOUSING:
 STAINLESS STEEL W/HOT DIP GALVANIZED STEEL HANGERS
 DRAIN PAN:
 AIR DEFROST W/HEAT TAPE FOR INNER DRAIN PAN
 INSULATED STAINLESS STEEL PAN AND COVER

COIL:
 RECIRCULATED BOTTOM FEED
 HOT GAS DEFROST
 STEEL TUBING
 STEEL FINS
 HOT DIP GALVANIZED AFTER FABRICATION

CUSTOM FEATURES:
 ELECTRIC REHEAT
 HINGED SIDE PANELS

DESIGN SPECIFICATIONS		UNITS
UNIT COOLING CAPACITY	91680	BTUH
ROOM TEMPERATURE	38	°F
SUCTION TEMPERATURE	30	°F
REFRIGERANT	R-717	-
* LIQUID FEED RATE	3.0	GPM
AIR FLOW RATE	24000	CFM
EXTERNAL STATIC PRESSURE	0	INWG
NOMINAL FIN SPACING	4	FINS/IN
TOTAL SURFACE AREA	2032	FT ²
APPROXIMATE WEIGHT	2100	LBS.
*NOTE: LIQUID FEED PRESSURE MUST BE AT LEAST 5 PSIG ABOVE SUCTION PRESSURE.		

● = MINIMUM REQUIRED FOR COMPLETE FAN AND MOTOR ASSEMBLY REMOVAL

WORK TO DIMENSIONS
 DO NOT SCALE DRAWING

SALES ORDER: 531017	LINE: 10	NO.	CHANGE DESCRIPTION	DATE	CHK'D
CUSTOMER P.O.: 35305DP	REVISIONS				
CUSTOMER NAME: PRESTON REFRIGERATION					
JOB NAME: BRYAN FOODS					
TAG UNIT:					
MODEL: BTRS-414-RBA-HGC					
ITEM NO.: 22S414RBAHGC					
NO. REQ'D: 2	DATE: 07/24/02	DRAWN: ACD			
SHEET 1 OF 2	<div style="text-align: center; font-size: 24pt; font-weight: bold;">KRACK</div> CORPORATION				REV.
TOLERANCE: ±0.50"					

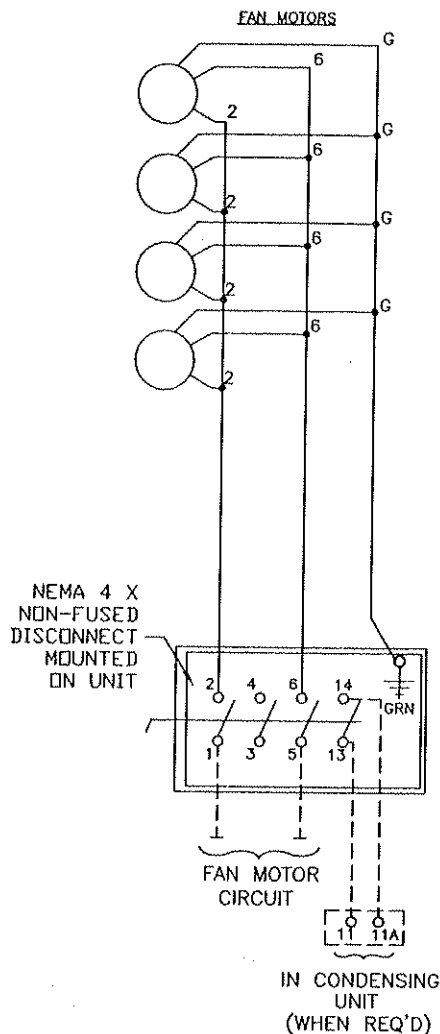
UNIT ELECTRICAL NAMEPLATE DATA

MOTOR CIRCUIT

AMOUNT	VOLTS	HZ	PH	HP EACH	FLA EACH
4	115	60	1	1/2	7.8

MINIMUM CIRCUIT AMPACITY 33.15

MAXIMUM OVERCURRENT PROTECTION 35



NOTES:

- MOTORS IN COLD ROOMS MAY DRAW GREATER THAN NAMEPLATE AMPERAGE DUE TO HIGHER DENSITY OF COLD AIR.
- MOTORS HAVE AUTOMATIC RESET THERMAL OVERLOAD PROTECTION.
- FIELD WIRING
 - FACTORY WIRING
- REFERENCE TERMINAL BLOCK MOUNTING ASSEMBLY KIT E322580A.

WORK TO DIMENSIONS
DO NOT SCALE DRAWING

SALES ORDER:	531017	LINE:	10	NO.	CHANGE DESCRIPTION	DATE	CK'D
CUSTOMER P.O.:	35305DP	REVISIONS					
CUSTOMER NAME:	PRESTON REFRIGERATION						
JOB NAME:	BRYAN FOODS						
TAG UNIT:							
MODEL:	BTRS-414-RBA-HGC						
ITEM NO.:	22S414RBAHCC						
NO. REQ'D:	2	DATE:	07/24/02	DRAWN:	ACD		
SHEET	2 OF 2	<p style="text-align: center;">KRACK CORPORATION</p>					REV.
TOLERANCE:	±0.50"						