

1996 FES High Stage Rotary Screw Compressor Package – 400 HP

Mfg: FES / Kobe

Model: 19L / KS19LNB

Stock No: RGMB105

Serial No: 19L171V

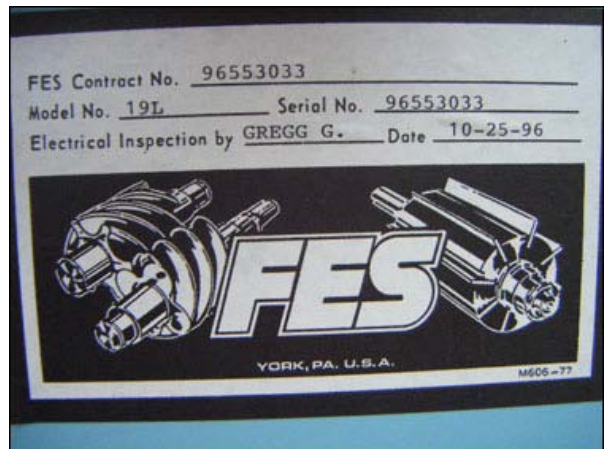
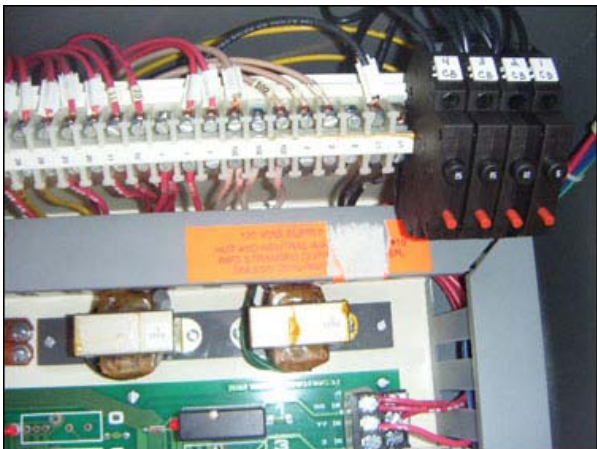
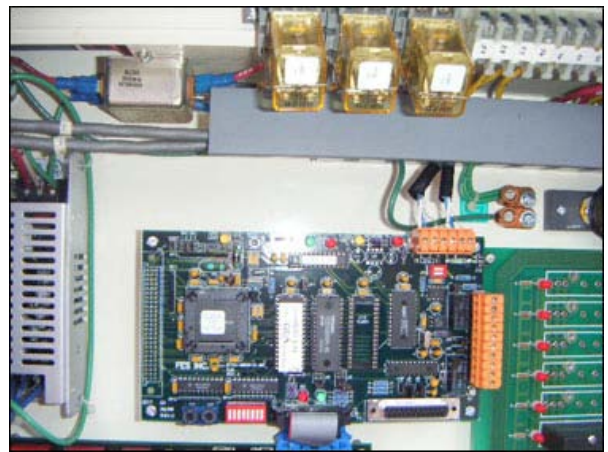
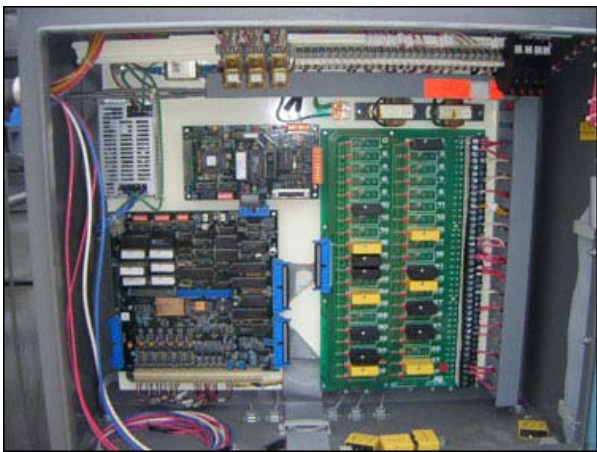
1996 FES 19L / Kobe KS19LNB High Stage Rotary Screw Compressor Package. Model: 19L / KS19LNB. S/N: 19L171V. Refrigerant: Last used with R-717 (ammonia). Leak test pressure: 350 psi. Hydrostatic test pressure: 525 psi. Nominal capacity: 462.7 tons at 357.8 BHP with a 35°F suction temperature and a 95°F discharge temperature. Vi setting: 2.2. Displacement: 894 cfm. 1996 Oil separator, National Board: 9199, SN: 960797, MAWP: 300 psi at 400 °F. MDMT: -20 °F at 300 psi. Radius: 2:1 elliptical ends. 1996 Condex thermosyphon oil cooler, S/N: 96-6713, Shell side MAWP: 400 psig at 250°F. Shell side MDMT: -20°F at 400 psig. Tube side MAWP: 300 psig at 200°F. Tube side MDMT: -20°F at 100 psig. RAM premium efficiency motor, 400 hp, 3570 rpm, 460 V, 430 amps, 60 Hz, 3 phase. FES Micro IIE control panel. SN: 96553033. Allen-Bradley solid state starter. Viking oil pump. Model: HV2924. S/N: 10786065. Baldor industrial motor, 3 hp, 1750 rpm, 208-230/460 V, 8.5-8.2/4.1 amps, 60 Hz, 3 phase. Inlet: 6 in. suction port. Outlet: 4 in. discharge port. Compressor runtime: 37,923 hrs. Overall dimensions: 11 ft. 8 in. L x 5 ft. W x 8 ft. H.

International Control Systems Motor Starter Control Panel. Serial No: J27-9697-3. Nominal rating: 400 hp, 480V, 607 amps, 60 Hz, 3 phase. ACME general purpose transformer: cat no. T-2-53013-4S. I-T-S® Sentron™ Series circuit breaker type: MXD6 cat no: MXD63B800, max volts: 600, continuous amps: 800. Includes Allen-Bradley SMC dialog plus™ smart motor controller. Overall dimensions: 2 ft. 6 in. L x 1 ft.10 in. W. x 6 ft. H.(H13).









CERTIFIED BY **Condex**
 HEAT TRANSFER CORP.
 JACKSON, MICHIGAN

NAPP SHELL	400	PSIG	250 F
MDMT SHELL	-20	F	400 PSIG
NAPP HEAD	500	PSIG	200 F
MDMT HEAD	-20	F	100 PSIG

MFG DES. NO. 58-6713
 W. TEAR
 DRAWING NO. MODEL

W.P. Corporation
 CH. F. A. A.

SER. 10786065
 100-HU2924

NATIONAL BOARD
 9100

CERTIFIED BY
 FES, DIVISION OF
 THERMO POWER CORP
 YORK, PA U.S.A.

M. A. W. P.
 600 PSI AT 400 F
 M. D. M. T.
 -20 F AT 600 PSI

SER. SERIAL NO. 930797
 MANUFACTURED 1993

BALDOR
 INDUSTRIAL MOTOR
 THREE PHASE

CAT. NO.	100000000	CONNECTION	Y
TYPE	TE	VOLTS	480
FRAME	TE	AMPS	6.5-6.2/4.1
HP	3	RPM	1725
VOLTS	480	PH	3
AMPS	6.5-6.2/4.1	CLASS	F
RPM	1725	CODE	K
PH	3	INS CL	62
CLASS	F	P.F.	82
CODE	K		

BALDOR ELECTRIC CO.
 YORK, PA U.S.A.

Pressure-Relief Valve

Cat. No.: 45601

Air Capacity: 753 SCFM

Set Pressure: 250 PSI

Inlet Outlet

Size: 1 1/2" 1"

Serial No.: 075 00 NB

(Code Case 2116)

HANSEN TECHNOLOGIES
 CORPORATION
 Burr Ridge, IL 60521 U.S.A.

FES

MODEL 19L

SER. NO. 19L171V

TEST PRESSURE - PSIG

LEAK 350 PSIG | HYD. 525 PSIG

REFRIGERANT R-717

LENDER'S

RAM INDUSTRIES INCORPORATED
 CALCO MANUFACTURING DIVISION

PREMIUM EFFICIENCY MOTOR

SERIAL # 100113-02-0Y

HP	1	FRAME	35	ENCL	ONE
RPM	1725	INS CL	62	NEMA DES	CODE
VOLTS	480	AMPS	4.33		
PHASE	3	HERTZ	60	DUTY	CONT
MAX AMP	4.0	INS CL			
BEARING NO DE	631303	ODE	631303		
NOM EFF	86.2	MIN EFF	85.2	P.F.	90.0

REFRIGERATION DUTY

RAM INDUSTRIES INCORPORATED
 CALCO MANUFACTURING DIVISION


PREMIUM EFFICIENT MOTOR

SERIAL #	100113-02-0Y	L1	L2	L3	
HP	1	FRAME	35	ENCL	ONE
RPM	1725	INS CL	62	NEMA DES	CODE
VOLTS	480	AMPS	4.33		
PHASE	3	HERTZ	60	DUTY	CONT
MAX AMP	4.0	INS CL			
BEARING NO DE	631303	ODE	631303		
NOM EFF	86.2	MIN EFF	85.2	P.F.	90.0

REFRIGERATION DUTY

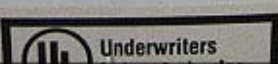


INDUSTRIAL CONTROL PANEL



INTERNATIONAL CONTROL SYSTEMS
3817 168th Street NE
Arlington WA, 98223

Volt : 480
Amp: 607
Phase: 3
Hz: 60
HP Largest Motor: 400
Serial #: J27-9697-3




ACME TRANSFORMER
LUMBERTON, NORTH CAROLINA

GENERAL PURPOSE TRANSFORMER

CATALOG NO T-2-53013-4S STYLE 3R
PRIMARY VOLTS 240 X 480 V/2-2.5% FC TAPS
SECONDARY VOLTS 120/240 WT 55 LBS
3 KVA 60 HZ 1 PHASE WINDING RISE 115 DEG C
% IMPEDANCE AT DEG C INSTRUCTIONS AT

MINIMUM FIELD INSTALLED CLEARANCES:
SIDE 4 INCHES, VERTICAL 4 INCHES

ENCLOSURE TYPE 3R OUTDOOR CLASS 190
INSULATION SYSTEM H-3188-L

WIRING INFORMATION ON INSIDE COVER

ACME ELECTRIC CORPORATION
POWER DISTRIBUTION PRODUCTS DIVISION
LUMBERTON, NC MADE IN U.S.A

4-2-700967

Shielded

I-T-E[®] Sentron™ Series

Cat. No. **MXD63B800**

Amps. Cont.	Volts Max.
800	600 AC

Type	Poles	Calc. Base
MXD6	3	400 C

Current Interrupting Ratings

Maximum RMS Symmetrical Amps	Wick	FREQUENCY
85,000	240 AC	50/60 Hz
50,000	480 AC	50/60 Hz
25,000	600 AC	50/60 Hz

I-T-E Circuit Breaker

Wire Connectors

Cal. No.	Wire Range	Current Rating
TAK350	12 # 14-22 AWG	30 A
TAK355	12 # 14-22 AWG	35 A
TAK360	12 # 14-22 AWG	40 A
TAK365	12 # 14-22 AWG	45 A
TAK370	12 # 14-22 AWG	50 A
TAK375	12 # 14-22 AWG	55 A
TAK380	12 # 14-22 AWG	60 A
TAK385	12 # 14-22 AWG	65 A
TAK390	12 # 14-22 AWG	70 A
TAK395	12 # 14-22 AWG	75 A
TAK400	12 # 14-22 AWG	80 A
TAK405	12 # 14-22 AWG	85 A
TAK410	12 # 14-22 AWG	90 A
TAK415	12 # 14-22 AWG	95 A
TAK420	12 # 14-22 AWG	100 A
TAK425	12 # 14-22 AWG	105 A
TAK430	12 # 14-22 AWG	110 A
TAK435	12 # 14-22 AWG	115 A
TAK440	12 # 14-22 AWG	120 A
TAK445	12 # 14-22 AWG	125 A
TAK450	12 # 14-22 AWG	130 A
TAK455	12 # 14-22 AWG	135 A
TAK460	12 # 14-22 AWG	140 A
TAK465	12 # 14-22 AWG	145 A
TAK470	12 # 14-22 AWG	150 A
TAK475	12 # 14-22 AWG	155 A
TAK480	12 # 14-22 AWG	160 A
TAK485	12 # 14-22 AWG	165 A
TAK490	12 # 14-22 AWG	170 A
TAK495	12 # 14-22 AWG	175 A
TAK500	12 # 14-22 AWG	180 A
TAK505	12 # 14-22 AWG	185 A
TAK510	12 # 14-22 AWG	190 A
TAK515	12 # 14-22 AWG	195 A
TAK520	12 # 14-22 AWG	200 A
TAK525	12 # 14-22 AWG	205 A
TAK530	12 # 14-22 AWG	210 A
TAK535	12 # 14-22 AWG	215 A
TAK540	12 # 14-22 AWG	220 A
TAK545	12 # 14-22 AWG	225 A
TAK550	12 # 14-22 AWG	230 A
TAK555	12 # 14-22 AWG	235 A
TAK560	12 # 14-22 AWG	240 A
TAK565	12 # 14-22 AWG	245 A
TAK570	12 # 14-22 AWG	250 A
TAK575	12 # 14-22 AWG	255 A
TAK580	12 # 14-22 AWG	260 A
TAK585	12 # 14-22 AWG	265 A
TAK590	12 # 14-22 AWG	270 A
TAK595	12 # 14-22 AWG	275 A
TAK600	12 # 14-22 AWG	280 A
TAK605	12 # 14-22 AWG	285 A
TAK610	12 # 14-22 AWG	290 A
TAK615	12 # 14-22 AWG	295 A
TAK620	12 # 14-22 AWG	300 A
TAK625	12 # 14-22 AWG	305 A
TAK630	12 # 14-22 AWG	310 A
TAK635	12 # 14-22 AWG	315 A
TAK640	12 # 14-22 AWG	320 A
TAK645	12 # 14-22 AWG	325 A
TAK650	12 # 14-22 AWG	330 A
TAK655	12 # 14-22 AWG	335 A
TAK660	12 # 14-22 AWG	340 A
TAK665	12 # 14-22 AWG	345 A
TAK670	12 # 14-22 AWG	350 A
TAK675	12 # 14-22 AWG	355 A
TAK680	12 # 14-22 AWG	360 A
TAK685	12 # 14-22 AWG	365 A
TAK690	12 # 14-22 AWG	370 A
TAK695	12 # 14-22 AWG	375 A
TAK700	12 # 14-22 AWG	380 A
TAK705	12 # 14-22 AWG	385 A
TAK710	12 # 14-22 AWG	390 A
TAK715	12 # 14-22 AWG	395 A
TAK720	12 # 14-22 AWG	400 A
TAK725	12 # 14-22 AWG	405 A
TAK730	12 # 14-22 AWG	410 A
TAK735	12 # 14-22 AWG	415 A
TAK740	12 # 14-22 AWG	420 A
TAK745	12 # 14-22 AWG	425 A
TAK750	12 # 14-22 AWG	430 A
TAK755	12 # 14-22 AWG	435 A
TAK760	12 # 14-22 AWG	440 A
TAK765	12 # 14-22 AWG	445 A
TAK770	12 # 14-22 AWG	450 A
TAK775	12 # 14-22 AWG	455 A
TAK780	12 # 14-22 AWG	460 A
TAK785	12 # 14-22 AWG	465 A
TAK790	12 # 14-22 AWG	470 A
TAK795	12 # 14-22 AWG	475 A
TAK800	12 # 14-22 AWG	480 A
TAK805	12 # 14-22 AWG	485 A
TAK810	12 # 14-22 AWG	490 A
TAK815	12 # 14-22 AWG	495 A
TAK820	12 # 14-22 AWG	500 A
TAK825	12 # 14-22 AWG	505 A
TAK830	12 # 14-22 AWG	510 A
TAK835	12 # 14-22 AWG	515 A
TAK840	12 # 14-22 AWG	520 A
TAK845	12 # 14-22 AWG	525 A
TAK850	12 # 14-22 AWG	530 A
TAK855	12 # 14-22 AWG	535 A
TAK860	12 # 14-22 AWG	540 A
TAK865	12 # 14-22 AWG	545 A
TAK870	12 # 14-22 AWG	550 A
TAK875	12 # 14-22 AWG	555 A
TAK880	12 # 14-22 AWG	560 A
TAK885	12 # 14-22 AWG	565 A
TAK890	12 # 14-22 AWG	570 A
TAK895	12 # 14-22 AWG	575 A
TAK900	12 # 14-22 AWG	580 A
TAK905	12 # 14-22 AWG	585 A
TAK910	12 # 14-22 AWG	590 A
TAK915	12 # 14-22 AWG	595 A
TAK920	12 # 14-22 AWG	600 A
TAK925	12 # 14-22 AWG	605 A
TAK930	12 # 14-22 AWG	610 A
TAK935	12 # 14-22 AWG	615 A
TAK940	12 # 14-22 AWG	620 A
TAK945	12 # 14-22 AWG	625 A
TAK950	12 # 14-22 AWG	630 A
TAK955	12 # 14-22 AWG	635 A
TAK960	12 # 14-22 AWG	640 A
TAK965	12 # 14-22 AWG	645 A
TAK970	12 # 14-22 AWG	650 A
TAK975	12 # 14-22 AWG	655 A
TAK980	12 # 14-22 AWG	660 A
TAK985	12 # 14-22 AWG	665 A
TAK990	12 # 14-22 AWG	670 A
TAK995	12 # 14-22 AWG	675 A



AB QUALITY

Allen-Bradley SMC Dialog Plus™