

Vilter 8-Cylinder Reciprocating Compressor - 50 HP

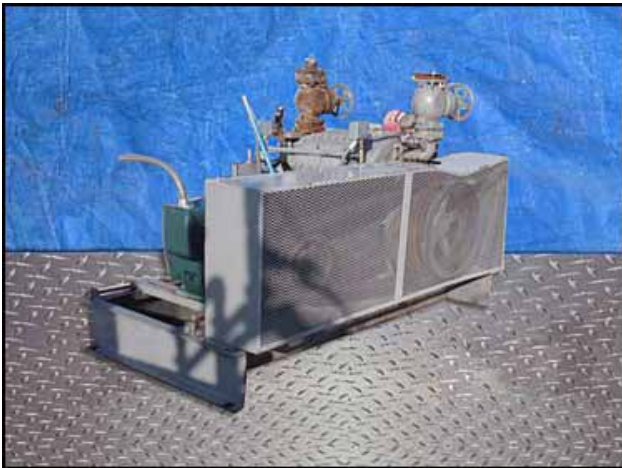
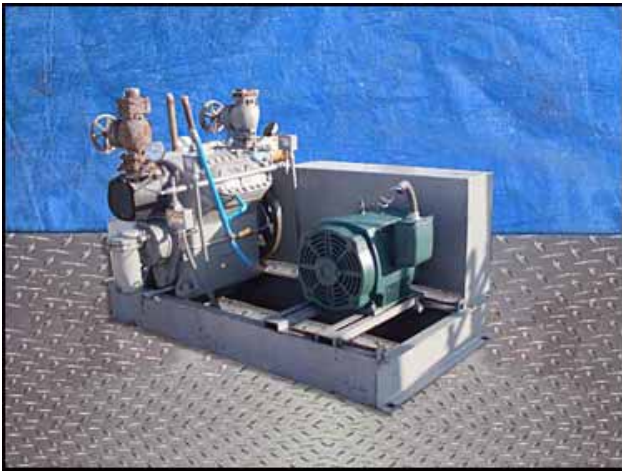
Mfg: Vilter

Model: 444

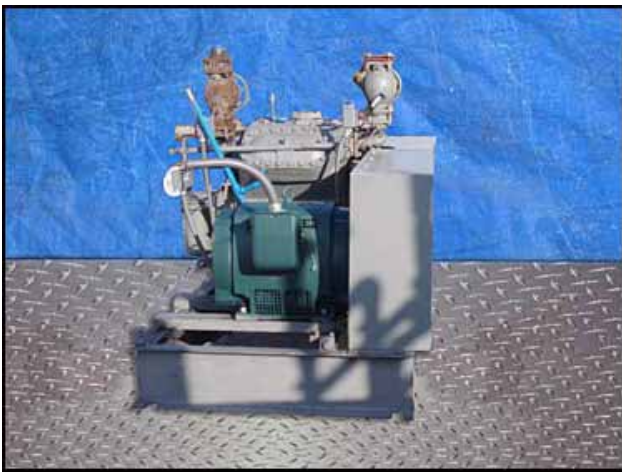
Stock No.: RGMP274

Serial No.: 7056ARC

Vilter 4-Cylinder Reciprocating Compressor. Model/Size: 444. S/N: 7056ARC. Order No: B954343. Refrigerant: R-717 (ammonia). Nominal capacity: 73.8 Tons of R-717 at 32.6 BHP with a 61.1°F condensing temperature and a 30°F suction temperature. Displacement: 155 cfm (at maximum rpm). Maximum rpm: 1200. Maximum discharge pressure: 300 psig. Maximum discharge temperature: 300°F. Maximum BHP with V-belt drive: 100 BHP. Maximum suction pressure: 150 psi. Reliance Electric Motor, 50 hp, 1780 rpm, 230/460 V, 120/60 amps, 60 Hz, 3 phase. Drive pulley diameter: 11-1/2 in. Driven pulley diameter: 1 ft. 9 in. Pulley ratio: 0.55. Final rpm: 972. Inlets: (1) 2-1/2 in. dia. refrigerant suction port, (1) 3/4 in. dia. port. Outlets: 2-1/2 in. dia. refrigerant discharge port, (1) 3/4 in. dia. port. Overall dimensions: 6 ft. 5 in. L x 4 ft. 3 in. W x 4 ft. 4 in. H. (ACN150a-BC).







RELIANCE ELECTRIC		XE	
IDENTIFICATION NO. 322483		FRAME 3224	
HP 50	VOLTS 208/230	PHASE 3	DESIGN
RPM 1755	AMPS 120/137	Hz 60	TYPE
DRIVE END BEARING 60BC0303M			AMB.
OPP. D.E. BEARING 60BC02005M			DUTY
POWER FACTOR 83.5	NEMA NOM EFFICIENCY 87%		INSUL CLASS
MAX CORR KVAR 12.0	GUARANTEED EFFICIENCY 85%		ENCL. CODE
WTLG MOTOR WEIGHT 639 LBS			
USABLE@200V, 50 HP 137 AMPS 1QS.F.			
RELIANCE ELECTRIC INDUSTRIAL CO. CLEVELAND, OHIO 44117		MADE IN TAIWAN 4-34230	

