

2009 Raypak Raytherm Indoor Hydronic Boiler – 66 HP

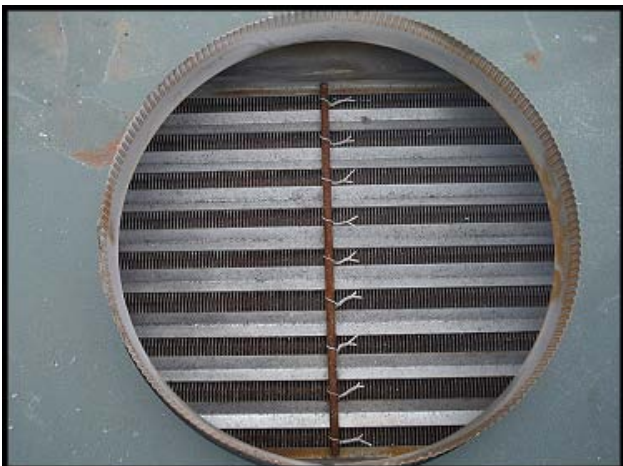
Mfg: Raypak

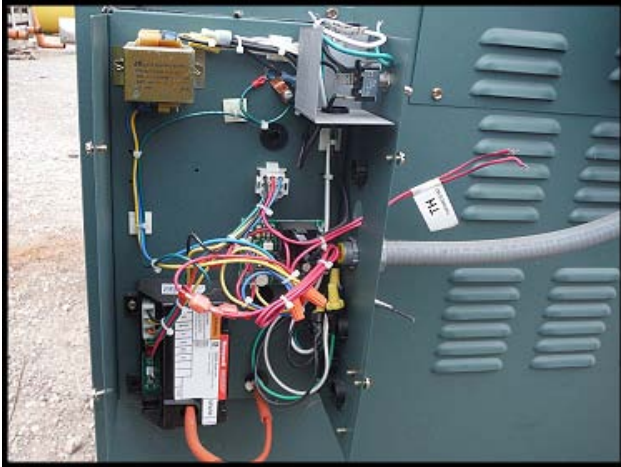
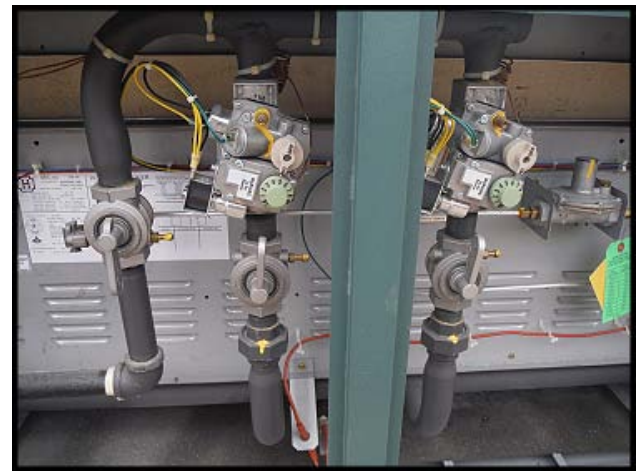
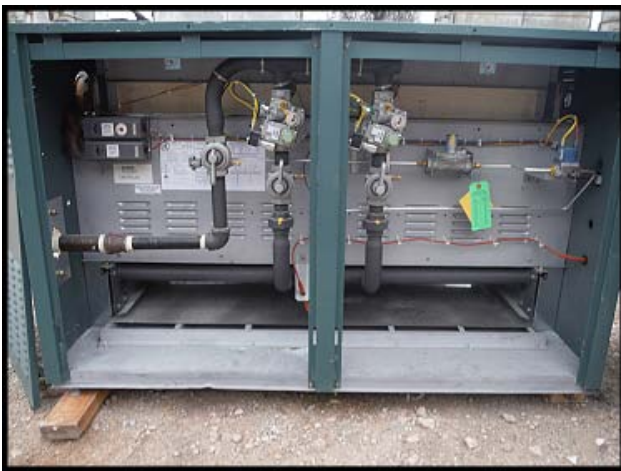
Model: H1-0962

Stock No: RHOH05.3a

Serial No: 0903294186

2009 Raypak Raytherm Indoor Hydronic Boiler – 66 HP. Model: H1-0962. S/N: 0903294186. Natural Gas. Input BTUH: 962,700. Output BTUH: 788,600. H1: mechanical modulation, set point 150°F-210°F. The Raytherm type H models have a 82% efficiency which, according to Raypak, is the highest of any atmospheric boiler. Max operating temp: 230°F. Gas port: 1 in. Water ports: 2.5 in. Flue diameter: 14 in. Approximate shipping weight: 705 lbs. Removed in running condition late 2013. Overall dimensions: 32.5 in. W x 52.375 in. L x 33.5 in. H.





H

NATL. BD. 294186
 CERTIFIED BY **RAYPAK, INC.**
 OXNARD, CALIFORNIA
 MAX W.P. WATER 160 PSI

BTU/HR. INPUT 961,700
 MFR. SERIAL NO. 0903294186
 MIN RELIEF VALVE CAP. 78# LESS/HR
 HEATING SURFACE 78 SQ. FT. BOILER
 HEATING SURFACE 7.64 SQ. FT. EXTENDED
 HEATING SURFACE 250 ° F
 MAX WATER TEMP

BTU/HR. OUTPUT 788,564
 BTU/HR. INPUT 961,700
 MIN INPUT RATE 0 BTU/HR
 GAS NAT
 MODEL NO. H1-0882
 CATEGORY 1 BOILER
 ACCEPTED FOR USE CITY OF NEW YORK
 DEPARTMENT OF BUILDING
 MEAK. 407-88-E VOL. II

AN 221.136-CBA 4 90-2077
 LOW PRESSURE BOILER CRN 6361.3C
 (M) 900608 THERMAL EFFICIENCY 82%

HOT WATER BOILER
 FOR INDOOR INSTALLATION

MIN. CLEARANCES FROM COMBUSTIBLE CONSTRUCTION

RIGHT SIDE	24"
LEFT SIDE	24"
BACK	24"
TOP	24"

FOR SERVICING, PROVIDE AT LEAST 24" OF UNOBSTRUCTED CLEARANCE IN FRONT OF THIS BOILER. THIS BOILER SHALL BE INSTALLED IN A SPACE LARGE IN COMPARISON TO THE SIZE OF THE BOILER.

MAX. PERMISSIBLE GAS SUPPLY PRESSURE	14" W.C.	14" W.C.
MIN. PERMISSIBLE GAS SUPPLY PRESSURE FOR PURPOSE OF INPUT ADJUSTMENT	7" W.C.	12" W.C.
MANIFOLD PRESSURE	4" W.C.	12" W.C.

ELECTRICAL RATINGS
 120/240 VOLT 60 HZ 1-PHASE 3-WIRE
 WHEN USED WITH POWER VOLT TERMINAL NO. 120/240 VOLT ELECTRICAL RATINGS WILL BE LISTED ON THE NAMEPLATE