

**1996 Raypak Raytherm Indoor Hydronic Boiler – 66 HP**

**Mfg: Raypak**

**Model: H1-0962CBEARAAA**

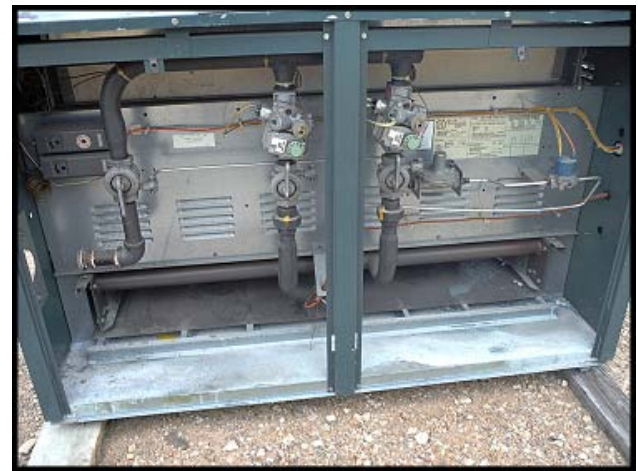
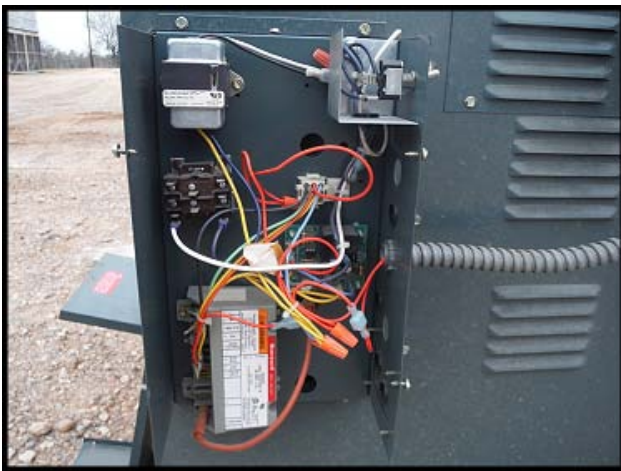
**Stock No: RHOH06.3a**



**Serial No: 9603130245**

1996 Raypak Raytherm Indoor Hydronic Boiler – 66 HP. Model: H1-0962CBEARAAA. S/N: 9603130245. Natural Gas. Input BTUH: 962,700. Output BTUH: 788,600. H1: mechanical modulation, set point 150°F-210°F. The Raytherm type H models have a 82% efficiency which, according to Raypak, is the highest of any atmospheric boiler. Max operating temp: 230°F. Gas port: 1 in. Water ports: 2.5 in. Flue diameter: 14 in. Approximate shipping weight: 705 lbs. Removed in running condition late 2013. Overall dimensions: 32.5 in. W x 52.375 in. L x 33.5 in. H.







 <b>NATL. BD.</b> 130246 CERTIFIED BY RAYPAK, INC. WESTLAKE VILLAGE, CALIFORNIA	<b>HOT WATER BOILER</b> FOR INDOOR INSTALLATION ONLY	
	MIN. CLEARANCES FROM COMBUSTIBLE CONSTRUCTION RIGHT SIDE 24" LEFT SIDE 24" BACK 24" TOP 24" FOR SERVICING, PROVIDE AT LEAST 24" UNOBSTRUCTED CLEARANCE IN FRONT OF UNIT.	
MAX W. P. WATER <input type="checkbox"/> 30 PSI <input type="checkbox"/> MIN RELIEF VALVE CAP 78 789 LBS/HR. HEATING SURFACE 78 789 SQ. FT. MFR. SERIAL NO. 950313 0245	BTU/HR. OUTPUT 788,594 759,320 BTU/HR. INPUT 951,788 MIN INPUT RATE 51,380/HR. GAS NAT MODEL NO. H1-0952C-BEAR	
 ANSI Z 21.10-1999 LOW PRESSURE BOILER P. N. 92000	MAX. PERMISSIBLE GAS SUPPLY PRESSURE 14" W.C. 14" W.C.	NAT IPS
	MIN. PERMISSIBLE GAS SUPPLY PRESSURE FOR PURPOSE OF INPUT ADJUSTMENT 7" W.C. 12" W.C.	MANIFOLD PRESSURE 6" W.C. 11" W.C. ELECTRICAL RATING: 120/24V 60 HZ. LESS THAN 12 AMPERES