

1995 Hoppmann FRS-60 SS Centrifugal Feeder

Mfg: Hoppmann

Model: FRS 60 SS

Stock No. SABE030.5a

Serial No. 25518

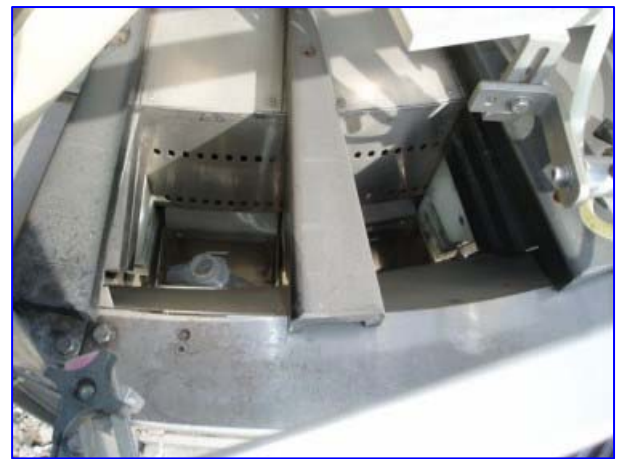
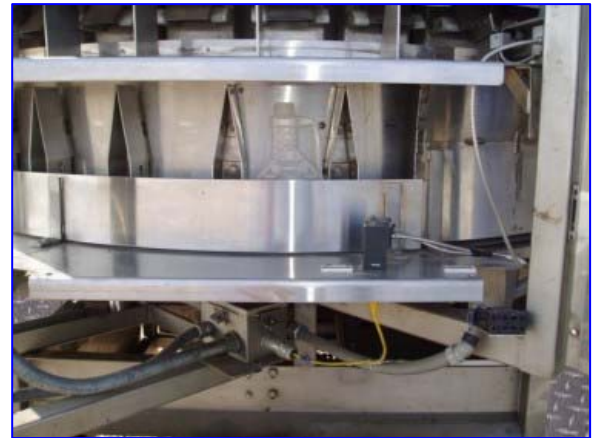
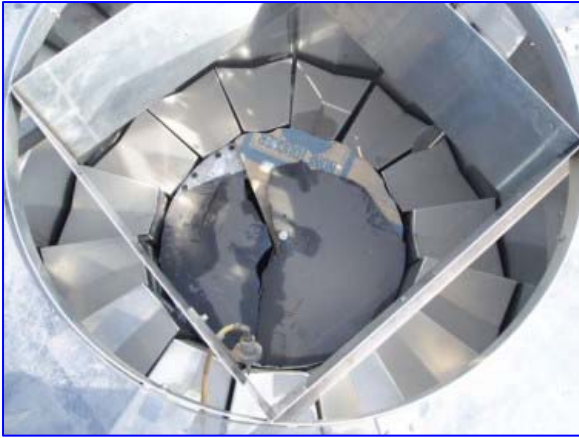
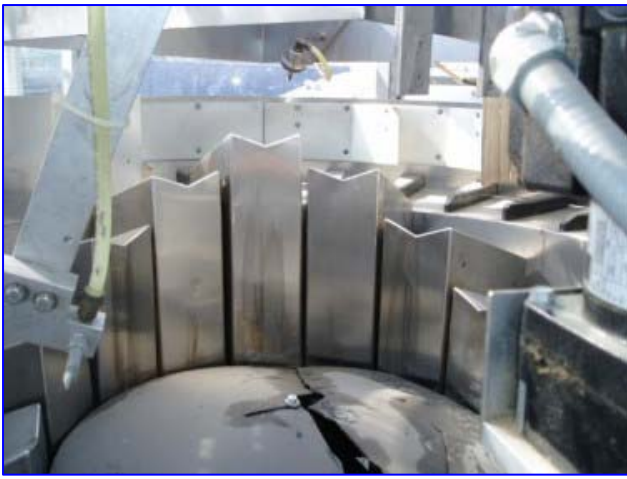
1995 Hoppmann FRS-60 Centrifugal Feeder. Model: FRS 60 SS. S/N: 25518. Hoppmann's FRS-60 is specifically designed to feed a wide range of large bottles and parts. The delivery rate varies from moderate to high speed depending on part characteristics. The FRS-60 is engineered to interface with Hoppmann prefeeders, accumulating conveyors, assembly systems and other downstream equipment. The accumulation bottle sorters lift and arrange in scallops. A belt qualifier removes any bottles that are not laying in between the scallops. Bottle feeder feeds 24 oz and 36 oz. bottles through (30) 5-1/2 in. L x 3 in. W x 9 in. H pockets. Reliance Electric Motor, 1 hp, 1725 rpm, 208-230/460 V, 2.8-2.8/1.4 amps, 60 Hz, 3 phase. Boston 100 Series Motor Drive, 60 ratio, 28.75 rpm (final), 1300 lb-in. Inlets: (1) 23 in. L x 23 in. W infeed. Outlets: (1) 2 in. W x 9 in. H discharge. Overall dimensions: 96 in. L x 96 in. W x 96 in. H.

Standard Features:

- Aluminum bowl with stainless steel walls.
- Variable speed C-Face motor/reducer
- Polyurethane scallops

Eaton PanelMate 1000, 8 PG Control Box, S/N: 12223-021, Part No: 92-0089-00, 18-30 VDC, features touchpad controls with digital display. Bodine Electric Company Gearmotor, 1/8 hp, 3.79 ratio, 660 rpm (final), 616 lb-in. torque.







FRS-60 Centrifugal Feeder



Product Overview

Hoppmann's FRS-60 is specifically designed to feed a wide range of large bottles and parts. The delivery rate varies from moderate to high speed depending on part characteristics. The FRS-60 is engineered to interface with Hoppmann prefeeders, accumulating conveyors, assembly systems and other downstream equipment.

Product Specifications

	U.S.	Global
A. Overall Width at Exit Zone	85"	2159mm
B. Overall Width	82"	2083mm
B. Overall Height	66" ± 5"	1676mm ± 130mm
C. Discharge Height	40" ± 5"	1016mm ± 130mm
D. Bowl inside Diameter	51.79"	1315mm
E. Rim Width	8"	203mm
F. Scallop Length	12"	305mm
Motor Size	3/4 HP	370 W
Motor Frame Size	NEMA 56C	IEC 71 D
Supply Voltage	115 VAC	240 VAC
Motor Voltage	90 VDC	220/380 VAC 3PH
Power Usage	8 amps	2.6/1.3 amps
Weight Untooled	2500lbs	1134 kg

Standard Features

- Aluminum bowl with stainless steel walls
- Variable speed C-Face motor/reducer
- Polyurethane scallops

Standard Options

- Polycarbonate hinged top cover
- Interchangeable tooling
- Variable speed AC drive
- Foodgrade scallops
- AC Inverter (metric)

