

Engineered Air - Air Handling Unit - 37.5 Tons

Mfg: Engineered Air

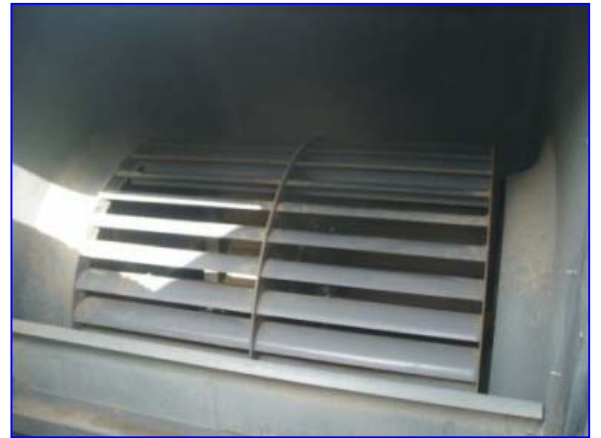
Model: LM-15-C

Stock No. 150-SC-2651

Serial No. DK107-MAU-202

1991 Engineered Air-Air Handling Unit- 37.5 Ton. Model: LM-15-C, S/N: DK107-MAU-202. Refrigerant: ammonia. Capacity: 15,000 cfm. Blower model: 25/25 FCDWD1. Blower motor: 10 hp, 1760 rpm, 460 V, 12.7 amps, 3 phase. Blower speed: 560 rpm. Pulley ratio: 3.2: 1. Belts: B-95. Overall dimensions: 185 in. L x 95 in. W x 78 in. H. Never installed.





JOB NAME _____ JOB NO.: 17231 (KC-146)

CUSTOMER: _____

ENG A MODEL: LM-15-C QTY. 1 TAG: MAU-202

MOUNTING: INDOOR BASE MOUNT INDOOR HUNG _____ OUTDOOR _____

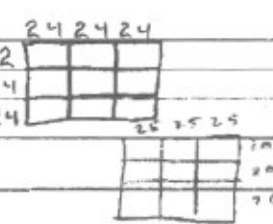
ACCESS: RIGHT HAND SIDE _____ PREFABRICATED ROOF CURB: _____

APPROX. SHIPPING WEIGHT: 3700 LB NO. OF PIECES: 1-UNIT

SUPPLY AIR DATA
 AIR FLOW 15000 CFM E.S.P. 1.4" W.C.
 FAN SIZE 25/25 FC DIAW QTY. 1
 TSP 3.3" W.C. RPM 740 REQ'D POWER 13.8HP
 MOTOR SIZE 15 HP * TYPE TEFC
RETURN AIR DATA
 AIR FLOW _____ E.S.P. _____
 FAN SIZE _____ QTY. _____
 TSP _____ RPM _____ REQ'D POWER _____
 MOTOR SIZE _____ TYPE _____
AIR OPENINGS AND DAMPERS

SERVICE	OPENING	DAMPER/TYPE	MOTORIZED	MANUAL	GRAVITY	LOCATION
SUPPLY AIR	X					FRONT - HORIZONTAL
RETURN AIR						
OUTSIDE AIR	X	PBD *	BY			BACK
EXHAUST AIR			OTHERS			
FACE & BYPASS		OBD				INTERNAL

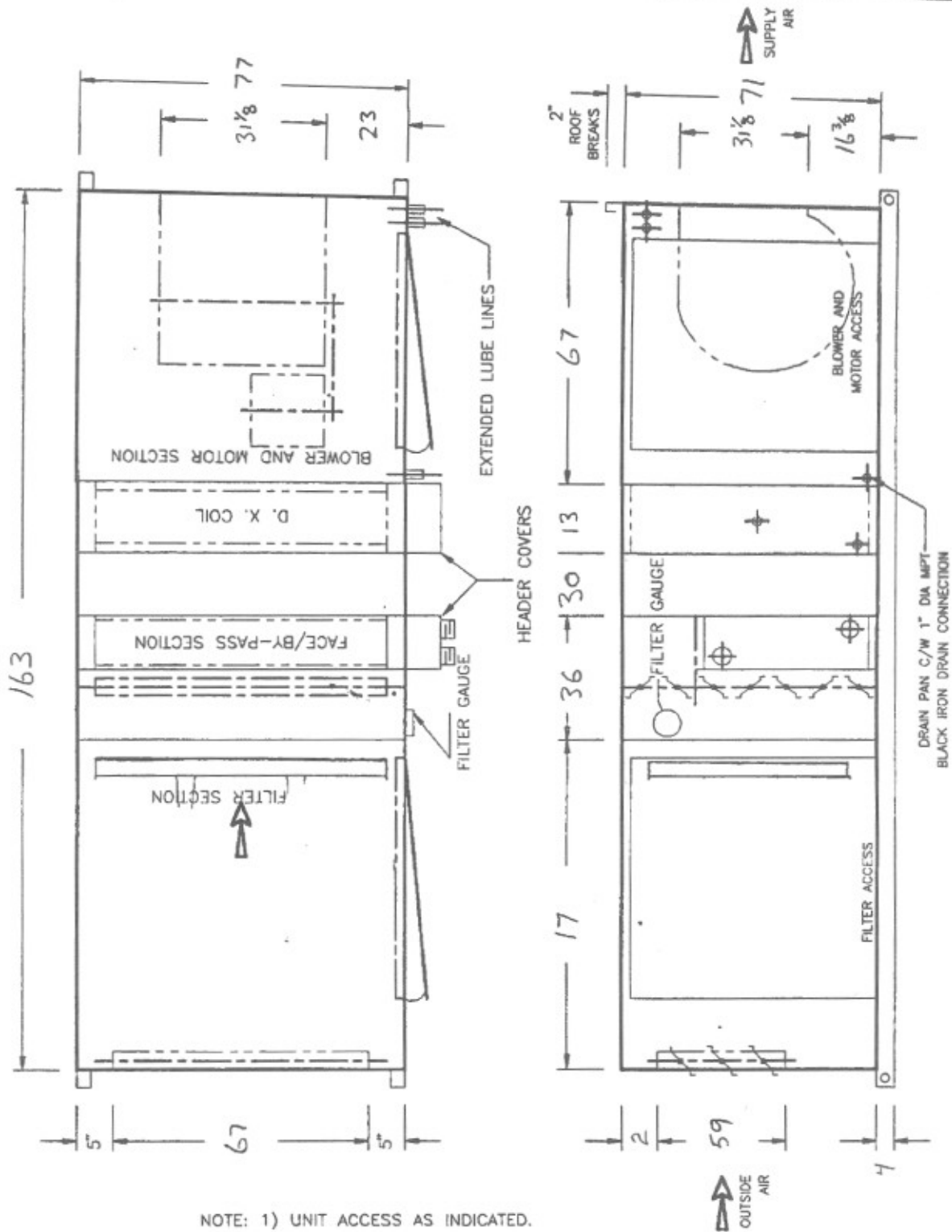
* ENG A LOW LEAK

FILTER DATA
 QTY./SIZE/TYPE: 6-24x24, 3-12x24 2" THROWAWAY 12
 QTY./SIZE/TYPE: _____ 24
 TOTAL GROSS AREA 30 FT² FACE VELOCITY 500 F/M 24
**ELECTRICAL DATA**
 _____ PREWIRED UNIT MOTOR(S) INSTALLED (WIRING BY OTHERS)
 UNIT/MOTOR(S) POWER SUPPLY: 460 VOLTS 3 PHASE 60 Hz.
 S/A MOTOR F.L.A. _____ R/A MOTOR F.L.A. _____ CONTROL CIRCUIT AMPS _____
 ELECTRIC HEAT KW _____ AMPS _____ CONTROL STAGES _____
 MAIN FEEDER AMPACITY _____ MAX. FUSE (D.E.) _____ MAX. BREAKER _____

INTERNAL CABINET INSULATION 1" STYROFOAM CW 22 GA. SOLID LINER

 HEATING AND/OR COOLING COIL(S) INSTALLED - SEE ATTACHED DATA SHEET(S) LIFT OUT ACCESS DOORS HINGED ACCESS DOORS CW VENTLOCK HANDLES**ADDITIONAL FEATURES**

- * BALDOR SUPER E PLUS MOTOR
- INTERNALLY ISOLATED BLOWER & MOTOR
- PILLOW BLOCK BEARINGS CW EXTENDED LUBE LINES
- HEATING & COOLING COILS CW DRAIN PAN & HEADER COVERS
- 0-2" MAGNETIC SERIES 2000 FILTER GAUGE
- 2 SPARE SETS FARR 30/30 2" FILTERS (SHIPPED LOOSE)



NOTE: 1) UNIT ACCESS AS INDICATED.
 2) DIMENSIONS ARE GIVEN IN INCHES.

G:\AC\LM\172311
 17231

EngA®

**ENGINEERED
 AIR**®

AIR HANDLING UNIT
LM SERIES

TAG: MAU-202

REVISIONS

DATE:
 MARCH 01/91

DRN.BY:
 FGH

CHKD.BY:

DRWG. No.
AH-172311

EngA®

ENGINEERED AIR®

FAN PERFORMANCE

JOB NAME _____

JOB NO: 17231

CUSTOMER _____

EngA MODEL: LM-15-C

QTY: 1

TAG: MAU-202

AIRFLOW 15000 CFM E.S.P. .7 in.w.c.

FAN MANUFACTURER LAU INDUSTRIES

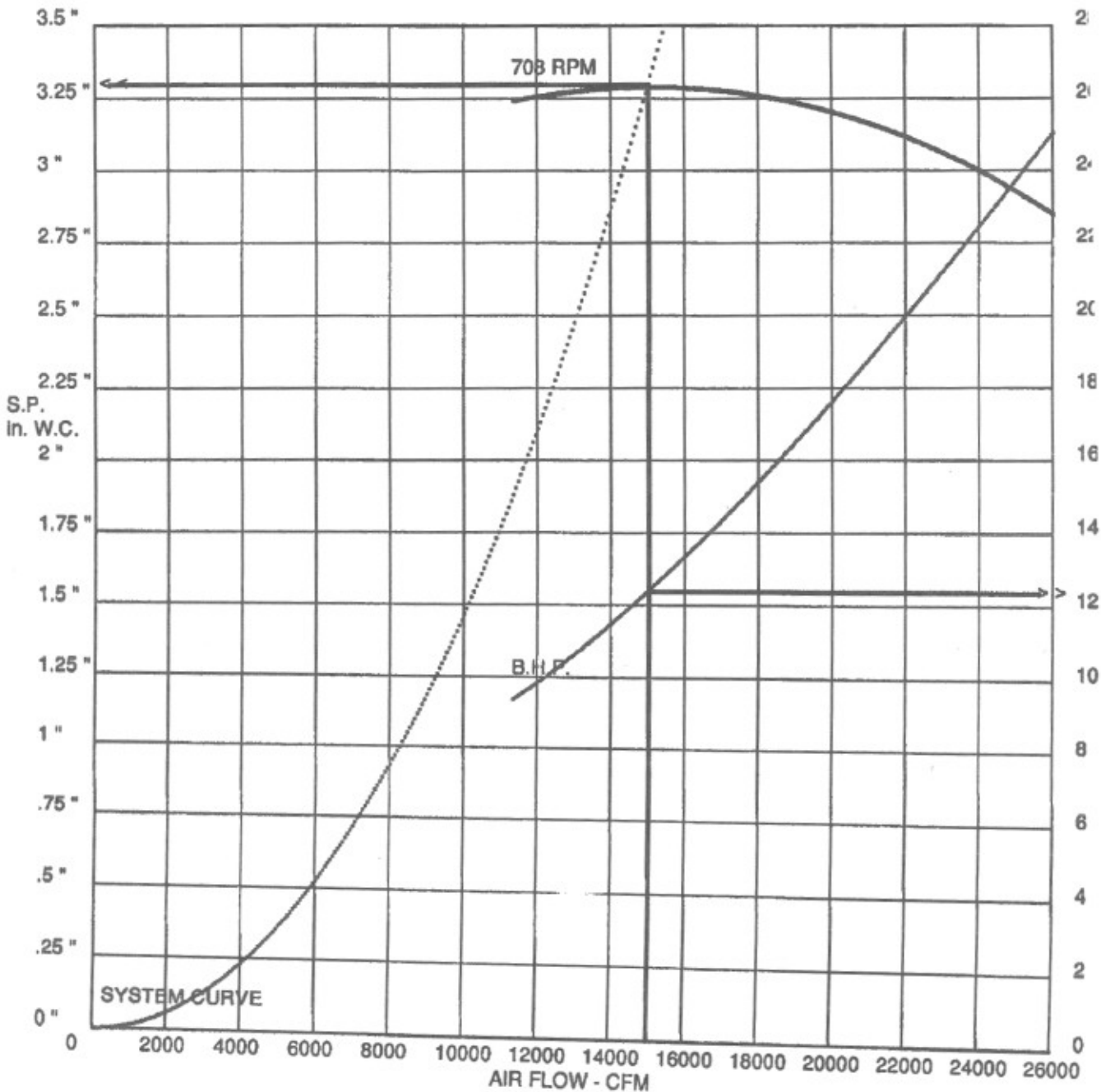
FANSIZE 25/25 DWDI FC QTY. 1

SOUND POWER DATA

TSP 3.3 in.w.c. RPM 708 REQ'D POWER 12.41 BHP Hz 63 125 250 500 1000 2000 4000 80

MOTOR SIZE 15 HP INLET VANES NO _____

dB: _____





ENGINEERED AIR

FAN PERFORMANCE

JOB NAME

JOB NO: 17231

CUSTOMER

EngA MODEL: LM-15-C

QTY: 1

TAG: MAU-202

AIRFLOW 15000 CFM E.S.P. .7 in.w.c.

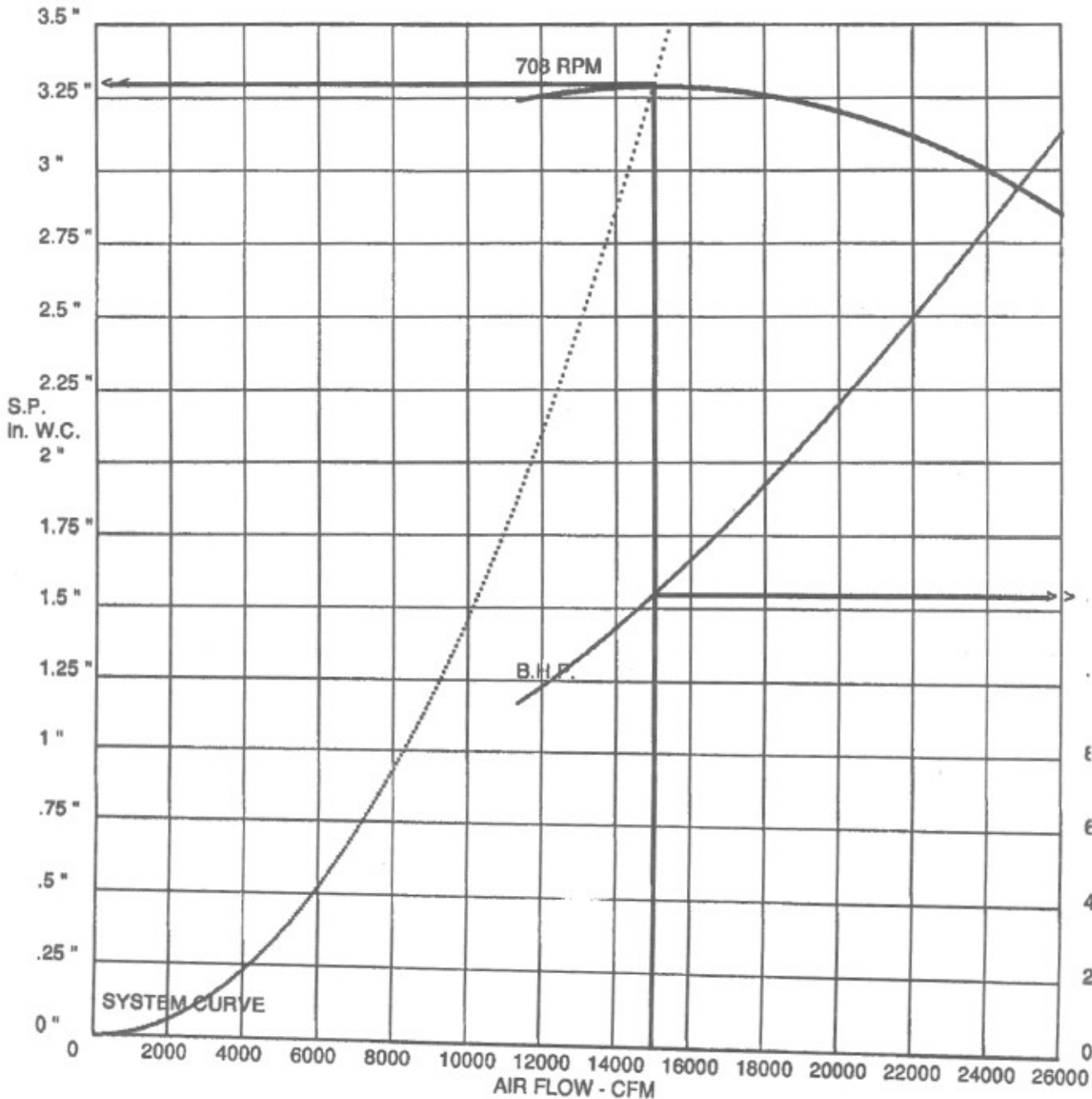
FAN MANUFACTURER LAU INDUSTRIES

FANSIZE 25/25 DWDI FC QTY. 1

SOUND POWER DATA

TSP 3.3 in.w.c. RPM 708 REQ'D POWER 12.41 BHP Hz 63 125 250 500 1000 2000 4000

MOTOR SIZE 15 HP INLET VANES NO dB:



DATE MAR 13/91**EngA ENGINEERED AIR**DIV. NO. KC-176D.X. COIL
CERTIFICATION DATANUMBER 1 OF 1JOB 17231

ITEM NUMBER	1	2	3
JOB COIL NUMBER	MAU - 204	MAU - 203 & 206	MAU - 202
LOCATION	LM-	LM-	LM-
SERVICE	AMMONIA COOLING	AMMONIA COOLING	AMMONIA COOLING
NUMBER REQUIRED	1	2	2
FACE WIDTH (IN. - MM)	25½-	29 -	29 -
FACE LENGTH (IN. - MM)	57 -	44 -	72 -
NUMBER ROWS	10	10	8
FIN SERIES	4	4	4
NUMBER DISTRIBUTORS	1	1 / COIL	1 / COIL
DISTRIBUTOR TYPE	1130-7-¼-35A	1130-8-¼-35A	1130-10-¼-50
DIST. CONN. SIDE	RH	RH	RH
SUCTION CONN. SIDE	RH	RH	RH
FACE AREA (SQ. FT. - M ²)	10 -	8.9 -	29 -
AIR VOLUME (CFM - L/S)	5000-	4500 -	15000-
AIR VELOCITY (FPM - M/S)	495 -	508 -	517 -
AIR FRICTION (IN H ₂ O - Pa)	1.8 -	1.8 -	1.4 -
CAPACITY (MBTU/HR - KW)	482 -	433 -	1445 -
BTUH/SQ.FT. - KW / M ²)	48 -	49 -	50 -
ENTERING DRY BULB (°F - °C)	95 -	95 -	95 -
ENTERING WET BULB (°F - °C)	76 -	76 -	76 -
LEAVING DRY BULB (°F - °C)	46 -	46 -	46 -
LEAVING WET BULB (°F - °C)	46 -	46 -	46 -
REFRIGERANT	AMMONIA	AMMONIA	AMMONIA
SUCTION TEMP (°F - °C)	36 -	36 -	36 -

NOTES:
HANDING DETERMINED BY LOOKING IN DIRECTION OF AIR FLOW.

FORM NO. CD-15-12-77

EngA ENGINEERED AIR

DATE MAR 8/91

DIV. NO. LC-146

STEAM COIL CERTIFICATION DATA

NUMBER 2 OF 4

JOB 17231

ITEM NUMBER	6	7	8	9	10
JOB COIL NUMBER	HVAC-234	236	MAU-201	202	203/206
LOCATION	HVAC-234	236	MAU-201	202	203/206
SERVICE	HEATING	HEATING	HEATING	HEATING	HEATING
NUMBER REQUIRED	1	1	1	1	2
TYPE	1" TUBE	1" TUBE	1" TUBE	1" TUBE	1" TUBE
FACE WIDTH (IN.)	12	18	21	48	24
FACE LENGTH	24	24	44	72	44
NUMBER ROWS	1	1	1	1	1
FIN SERIES	4	7	9	7	5
SUPPLY CONN. SIDE	LEFT	LEFT	LEFT	RIGHT	RIGHT
RETURN CONN. SIDE	LEFT	LEFT	LEFT	RIGHT	RIGHT
FACE AREA (SQ. FT.)	2	3	6.4	24	7.3
AIR VOLUME (CFM)	1000	1750	3600	15000	4500
AIR VELOCITY (FPM)	500	583	561	625	614
AIR FRICTION (IN H ₂ O)	.04	.07	.08	.08	.06
CAPACITY (BTU/HR)	47,740	131,014	343,738	1,122,975	263,655
ENTERING DRY BULB (°F)	1	1	1	1	1
LEAVING DRY BULB (°F)	45	70	89	70	55
LATENT HEAT (BTUH/#)	909	909	909	909	909
TOTAL STEAM FLOW (#/HR)	52	144	378	1236	290
STEAM PRESSURE (PSIG)	55	55	55	55	55
STEAM TEMP. (°F)	302.5	302.5	302.5	302.5	302.5
ENT. T.D. (°F)	301.5	301.5	301.5	301.5	301.5

NOTES:
