

1992 ZURN General Air Dryer

Mfg: ZURN

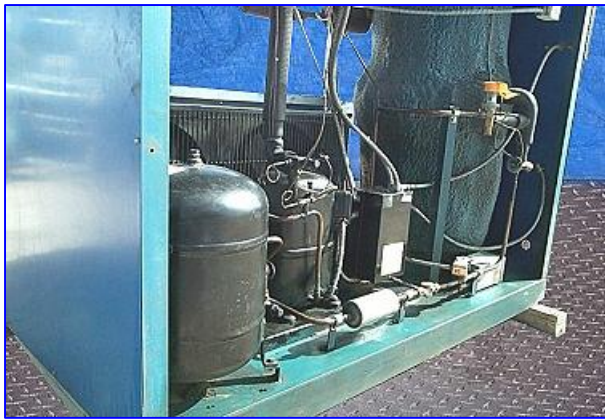
Model: R-200A

Stock No. SDYC012.

Serial No. R-19621

1992 ZURN General Air Dryer. Model: R-200A. S/N: R-19621. MAWP: 200 psi. Continuous duty. Capacity: 1000 scfm at 100 psi. Air inlet temperature: 100 °F. Refrigerant: R-22. Refrigerant test pressure: 400 psi (high), 150 psi (low). Copeland Compressor- 4 ton, model: CRN5-0500, 5 hp, electrical requirements: 460 V, 9.6 RLA, 50.0 LRA, 60 Hz, 3 phase. Evaporator dimensions: 41 in. L x 2-1/2 in. W x 25 in. H, (10) fins per inch. (2) Fan Motors, 1/4 hp, 460 V, 60 Hz, single phase. Insulated receiver air tank, Model: R-200, MAWP: 200 psi at 200 °F, MDMT: -20 °F at 200 psi. Air inlet: 4 in. diameter, flange capacity: 150 psi., air tank discharge: 1 in. threaded (female). Overall dimensions: 78 in. L x 37 in. W x 72 in. H.





ZURN/GENERAL AIR DIV.
 ERIE, PA. 16501
 COMPRESSED AIR DRYER

MODEL 200A SERIAL 12223 MWP 200 PSIG

CONTINUOUS DUTY CAPACITY:
 INLET AIR 100 °F 1000 SCFM @ 100 PSIG

YEAR BUILT 2-82 REFRIG. R-22

VOLTS 480 PH 3 HZ 60 RLA 12.3

COMPR HP 3 V 480 PH 3 HZ 60 RLA 9.2 LRA 30.3

FAN HP 1/2 V 480 PH 3 HZ 60 W 1 FLA 1.5 EA.

REFRIG. TEST PRESSURE: HIGH SIDE 400 PSIG; LOW SIDE 150

MADE IN ERIE, PA. U.S.A. 14801-20