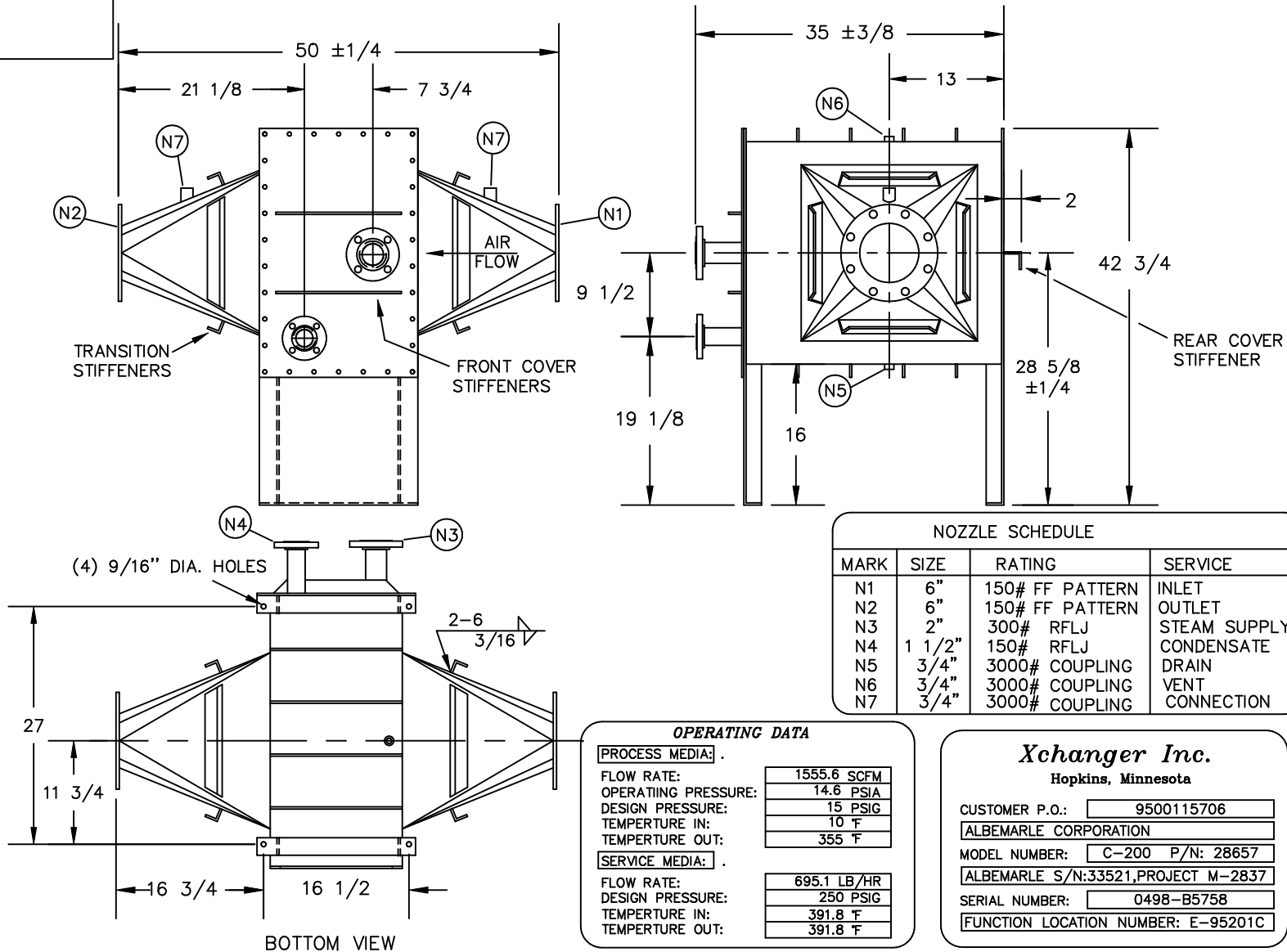


**CERTIFIED**  
DRAWING  
Date: 06/12/98

28657



NOZZLE SCHEDULE			
MARK	SIZE	RATING	SERVICE
N1	6"	150# FF PATTERN	INLET
N2	6"	150# FF PATTERN	OUTLET
N3	2"	300# RFLJ	STEAM SUPPLY
N4	1 1/2"	150# RFLJ	CONDENSATE
N5	3/4"	3000# COUPLING	DRAIN
N6	3/4"	3000# COUPLING	VENT
N7	3/4"	3000# COUPLING	CONNECTION

OPERATING DATA	
PROCESS MEDIA:	.
FLOW RATE:	1555.6 SCFM
OPERATING PRESSURE:	14.6 PSIA
DESIGN PRESSURE:	15 PSIG
TEMPERATURE IN:	10 F
TEMPERATURE OUT:	355 F
SERVICE MEDIA:	.
FLOW RATE:	695.1 LB/HR
DESIGN PRESSURE:	250 PSIG
TEMPERATURE IN:	391.8 F
TEMPERATURE OUT:	391.8 F

<b>Xchanger Inc.</b>	
Hopkins, Minnesota	
CUSTOMER P.O.:	9500115706
ALBEMARLE CORPORATION	
MODEL NUMBER:	C-200 P/N: 28657
ALBEMARLE S/N:33521,PROJECT M-2837	
SERIAL NUMBER:	0498-B5758
FUNCTION LOCATION NUMBER: E-95201C	

TOLERANCES  
(UNLESS OTHERWISE NOTED)

**Xchanger Inc.** 1401 SOUTH 7TH ST  
HOPKINS, MN 55343

MODEL C-200  
HEAT EXCHANGER ASSEMBLY

DECIMAL $\pm .13$	FRACTIONAL $\pm 1/8$	DRAWN BY: MJR APPROVED BY:	SCALE: NONE DATE: 06/12/98	JOB NUMBER B5758	SHEET 1 OF 1	DRAWING NUMBER 28657	REV. B
----------------------	-------------------------	-------------------------------	-------------------------------	---------------------	-----------------	-------------------------	-----------