

OSMO Osmonics Reverse Osmosis and Ozone Skid

Mfg: OSMO Osmonics

Model: E4-5400-DLX / E4-7200-DLX

Stock No.: SIKH143

Serial No.: 02-1160924-06 / 01-1160939-09

OSMO Osmonics Reverse Osmosis (R/O) and Ozone Skid. Controls by Benfield Control Systems, serial 008531.

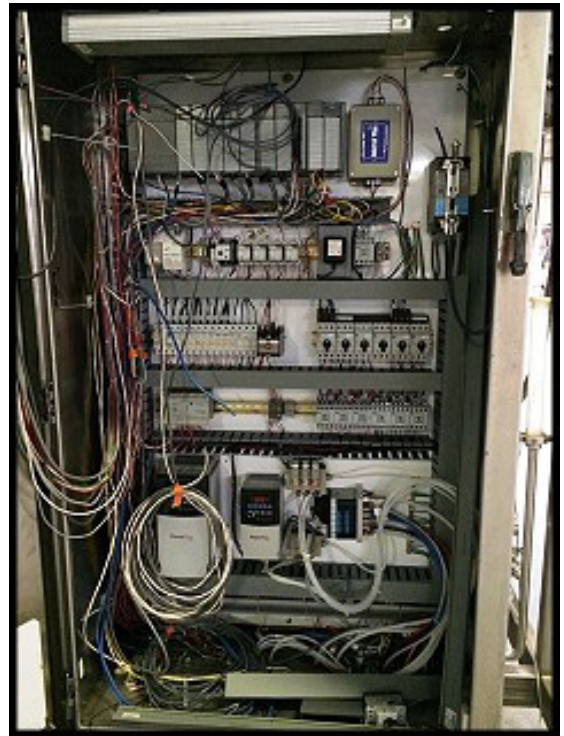
OSMO Osmonics E4 Skid. Model E4-5400-DLX. Serial: 02-1160924-06. Permeate Rate at +77F: 3.75 GPM. Concentration rate: 1.16 GPM. Min/max inlet pressure: 30/60 PSIG. Tonkaflo SS1816X pump.

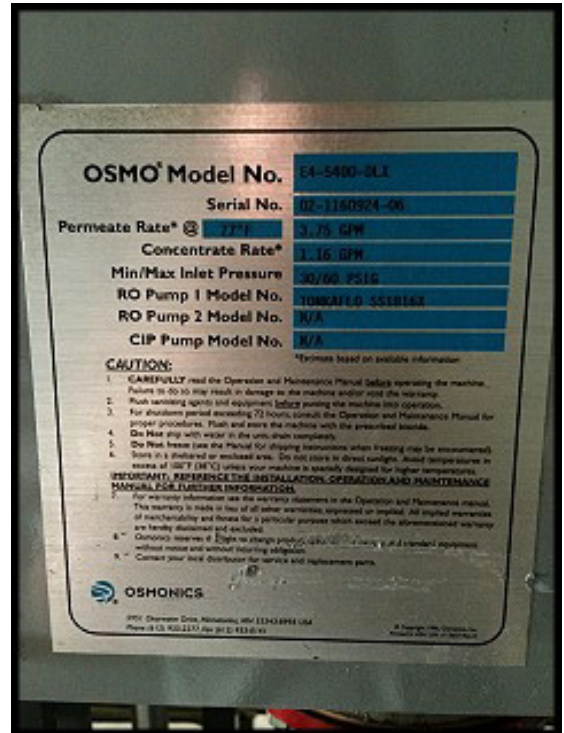
OSMO Osmonics E4 Skid. Model E4-7200-DLX. Serial: 01-1160939-09. Permeate Rate at +77F: 5.00 GPM. Concentration rate: 1.59 GPM. Max pressure: 250 PSIG. Min Pressure: 160 PSIG. Tonkaflo SS1816X pump.

Also includes: ozone detector, chlorine analyzer, Waukesha Cherry Burrell sanitary stainless centrifugal pumps, break tank, control valves, balance tank, filters, Magnum CV942F softener tank, Aquafine ultraviolet disinfection unit (UV Sterilizer), USF Filtration model T910601-000, type 21TK03A-2-IP, etc.

Overall dimensions: 16 ft. 2 in. L x 4.5 ft. W x 9.5 ft. H. Unit can be separated into half lengthwise if needed.











OSMO[®] RO, E4-7200-DLX

Serial No.	01-1160939-09
Permeate Rate* @ 77°F	5.00 GPM
Concentrate Rate	1.59 GPM
Pressure Max.	250 PSIG
Pressure Min.	160 PSIG
ΔP Max.	N/A
Pump 1	TONKAFLO SS1616X
Pump 2	N/A

*Estimate based on available information

CAUTION:

- CAREFULLY read the Operation and Maintenance Manual before operating the machine. Failure to do so may result in damage to the machine and/or void the warranty.
- Flush sanitizing agents and equipment before putting the machine into operation.
- For shutdown period exceeding 72 hours, consult the Operation and Maintenance Manual for proper procedures. Flush and store the machine with the prescribed biocide.
- Do Not ship with water in the unit; drain completely.
- Do Not freeze (see the Manual for shipping instructions when freezing may be encountered).







