

1993 York Air-Cooled Liquid Chiller- 104 Ton

Mfg: York

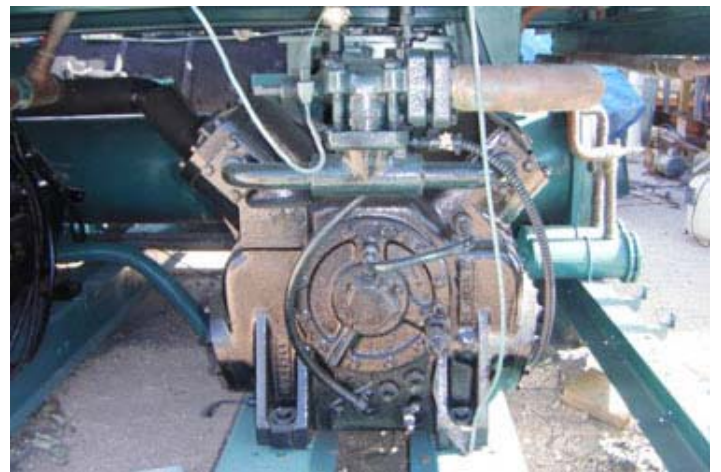
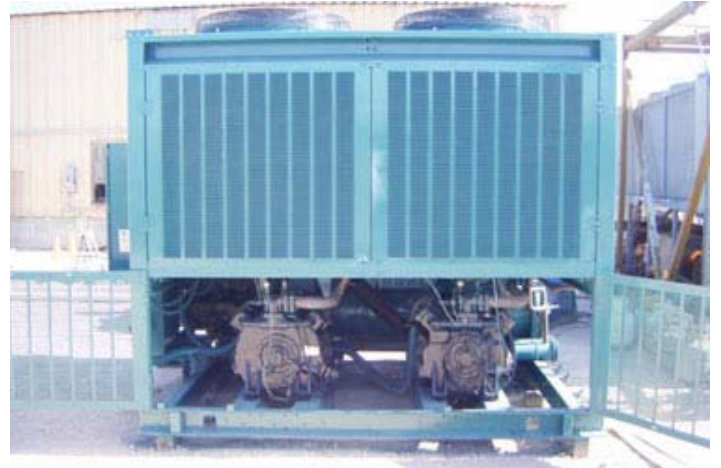
Model: YCAJ44MR6-46PB

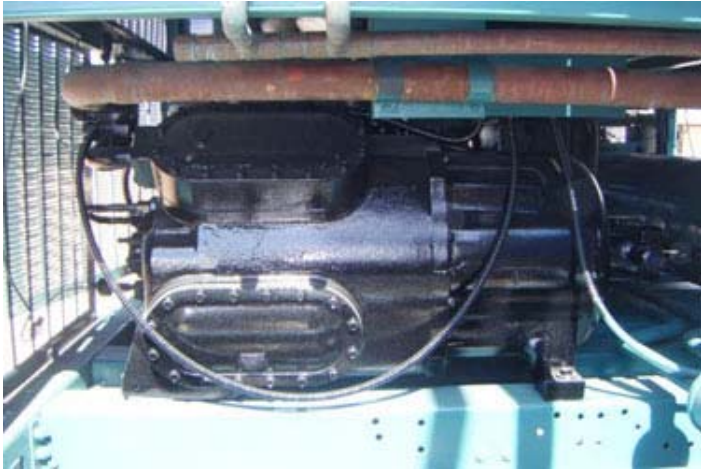
Stock No.: SMBV096.6

Serial No.: MKBM000983

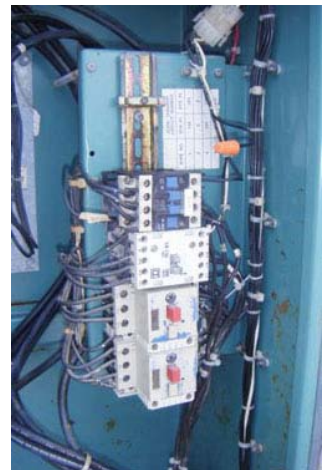
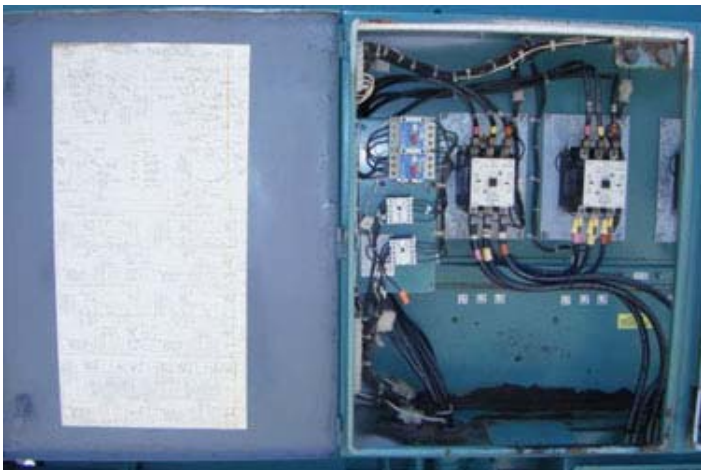
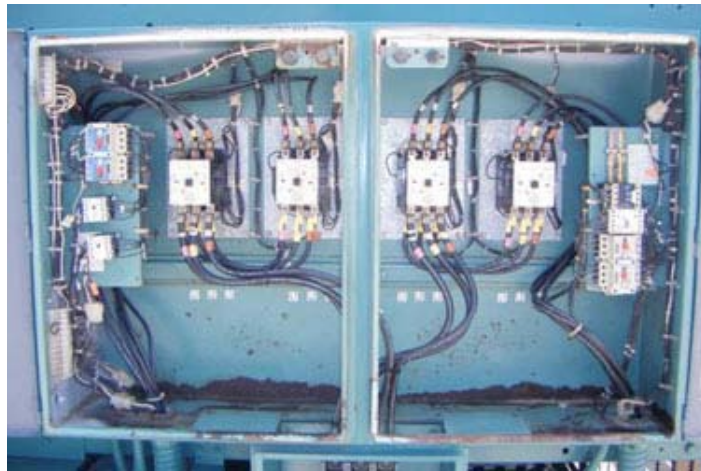
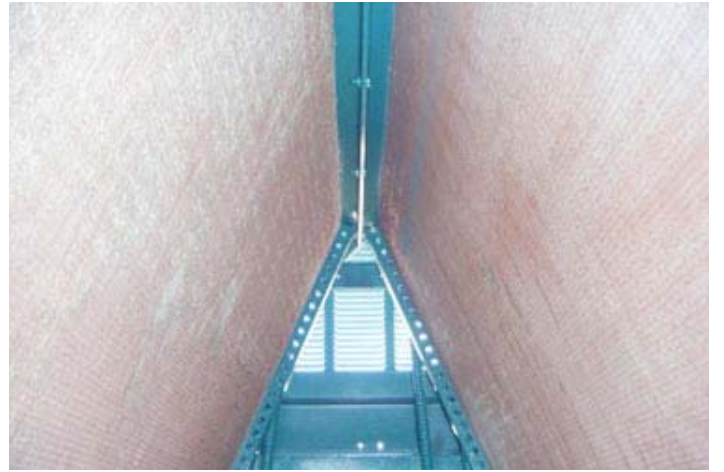
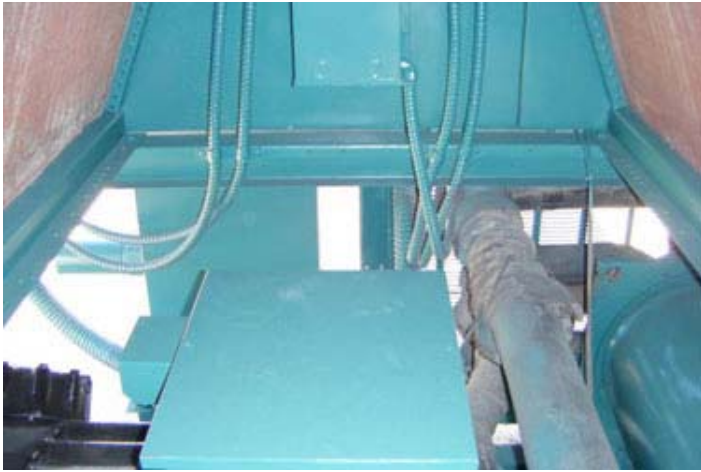
1993 York Air-Cooled Liquid Chiller- 104 Ton. Model: YCAJ44MR6-46PB. S/N: MKBM000933. Outdoor use only. Refrigerant: R-22. Refrigerant charge per system: 78 lbs. Test pressure: 450 psig. System requirements: 460 V, 60 Hz, 3 phase. (2) York International Corporation reciprocating compressors. Electrical requirements: 3 hp, 100 RLA, 318 LRA, 135 amp minimum circuitry ampacity, 175 amp max. dual element fuse size. Unit is equipped with (4) 37 in. dia. cooling fans, each having (4) 35 in. blades per fan. Inlets: (1) 6 in. inlet port. Outlet: (1) 6 in. outlet port. Overall Dimensions: 9 ft. 7 in. L x 7ft. 7 in. W x 7 ft. 6 in. H. (ACN410).

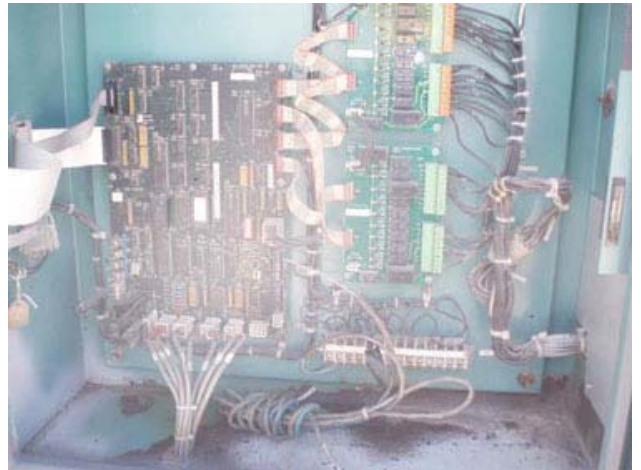
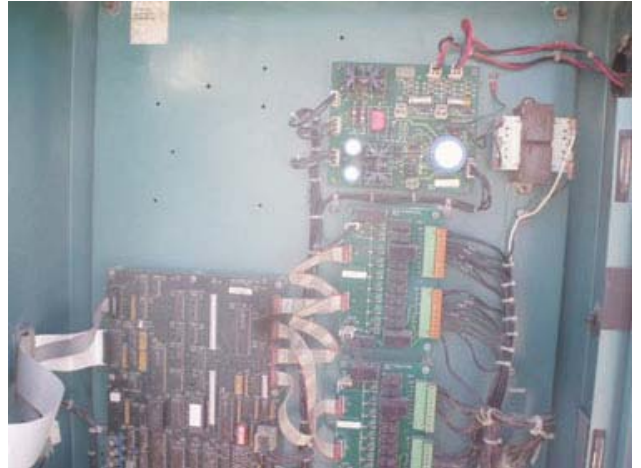












YORK LIQUID CHILLER MODEL _____ SERIAL ORDER NO. _____

REFRIGERANT-ZZ FACTORY TEST PRESS. _____ PSIG HIGH SIDE _____ PSIG LOW SIDE
 VOLTS-PHASE-HZ _____ VOLTAGE LIMITS MIN. _____ MAX. _____

USE _____ SYSTEM 1 _____ SYSTEM 2 _____ UNIT _____

FACTORY REFRIGERANT CHARGE	LB				
MIN. CIRCUIT AMPS/CYCLE	AMPS				
MAX. DUAL ELEMENT FUSE SIZE	AMPS				
MAX. CIRCUIT BREAKER SIZE	AMPS				
COMPRESSOR	VOLTS-PHASE-HZ	NO.	HLA	LSA	UNA
CONDENSER FANS	VOLTS-PHASE-HZ	NO.	HLA	LSA	UNA
UNIT CONTROL SUPPLY	VOLTS-PHASE-HZ				
LOADS	NO.	VOLTS-PHASE-HZ	WATTS	(kW)	(kW)
OIL HEATER					
COOLER HEATER					
FIELD CHILLER LIQ. LINE HEATER					

MIN. CIRCUIT CAPACITY _____ AMP
 MAX. DUAL ELEMENT FUSE SIZE _____
 MAX. CIRCUIT BREAKER SIZE _____

YORK INTERNATIONAL CORPORATION
 APPLIED SYSTEMS DIVISION
 YORK, PA.

COMPRESSOR REMANUFACTURED BY YORK INTERNATIONAL CORPORATION
 WHEELING, ILLINOIS 60090

MODEL _____ THERMALLY PROTECTED SYSTEM _____

FACTORY TEST PRESSURE **450** PSIG

VOLTAGE	PH	HZ	FW LRA	LRA	REFRIGERANT GAUGE VOLTS
360/43	3	60	397	313	414-506
VOLTAGE	PH	HZ	FW LRA	FW LRA	PROTECTION GAUGE VOLTS
360/43	3	60	402	297	342-440

MADE IN THE USA