

Waukesha Model 2085 Sanitary Centrifugal Pump

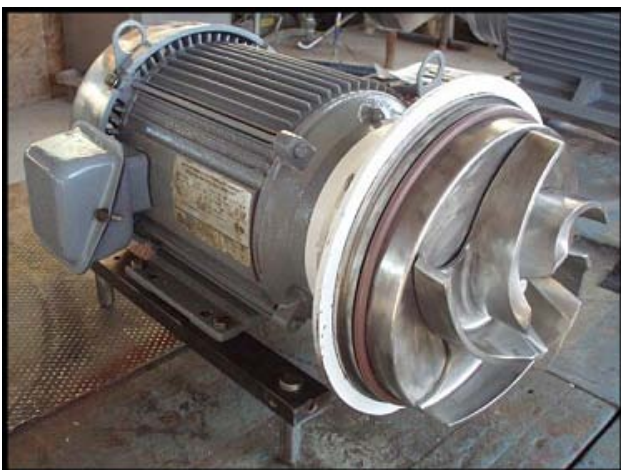
Mfg: Waukesha

Model: 2085

Stock No: SPGT060.1

Serial No:

Waukesha Model 2085 Sanitary Centrifugal Pump. Model: 2085. Impeller diameter: 8 in. U. S. Motors electric motor, 5 hp, 1745 rpm, 575 V, 5.4 amps, 60 Hz, 3 phase. Inlet: (1) 3 in. dia. S-line fitting. Outlet: (1) 2-½ in. dia. S-line fitting. Overall dimensions: 1 ft. 9-½ in. L x 1 ft. 2-½ in. W x 1 ft. 1 in. H.





MOTEUR FERMÉ A HAUT RENDEMENT UNIMOUNT®
ENCLOSED HIGH EFFICIENCY UNIMOUNT®

| | | | | | | | | | | |
|-----------------|-------|----|----------------|--------------|---------------|----|----------------|-------|-----------------------------|------|
| MODELE MODEL | G6073 | HC | 5:0 | PH 3 | Hz | 60 | BPM | 4745 | DES | 8 |
| WATT PHASES | 1.84 | M | TYPE | UT4 | CONST FACT | 1E | FS SF | 1.15 | CODE | J |
| VOLTS | 275 | | ID | C07-G60738-M | | | REGIME DUTY | CONT. | EFF RENDT POL APPL | 84-0 |
| AMPS | 5.4 | | MAX AMB | 40 | °C | | | | | F |
| WTL HGT | | | FRONT VIEW | | 6307-2Z-J/C3 | | | | | |
| | | | SMALL END VIEW | | 6205-2Z-J/C3 | | | | | |
| | | | ROAST VIEW | | | | | | | |
| | | | OPP END VIEW | | | | | | | |

SUITABLE FOR 500V, DES. A

MOTEURS ELECTRIQUES U.S.
 DIVISION OF EMERSON ELECTRIC CO. ST. LOUIS, MO.
U.S. ELECTRICAL MOTORS
 DIVISION OF EMERSON ELECTRIC CO. ST. LOUIS, MO.
 MADE IN U.S.A.

BRANCHEMENT FILS MOTEUR
MOTOR LEAD CONNECTION