

GENERAL NOTES

1. All dimensions are in inches and general tolerances are: fractions $\pm 1/8$ ", angles ± 1 degree, unless otherwise noted.
2. Stainless steel internal surfaces: #4 finish (40-72 RA)
Stainless steel external surfaces: #4 finish (40-72 RA)
3. Vessel weight empty: 550 lbs approx.

DESIGN DATA

1. ASME Section VIII 1992	Code Symbol "U"	
2. Design and Test	Internal	Jacket
Design Pressure	ATMOS	100 PSI
Design Temperature	---	338 DEG F
Test Pressure	---	155 PSI

MATERIAL SPECIFICATIONS

CYLINDER	316	AGITATOR	316
INSIDE BOWL	316	COVER	304
JACKET BOWL	304	OUTLET	316
SHEATH	304	LEGS	304
		CHANNEL	304

MODEL NO. 50 GALLON STYLE "D7S" GUM KETTLE

CUSTOMER: M&M MARS

CUSTOMER P.O.# 307823

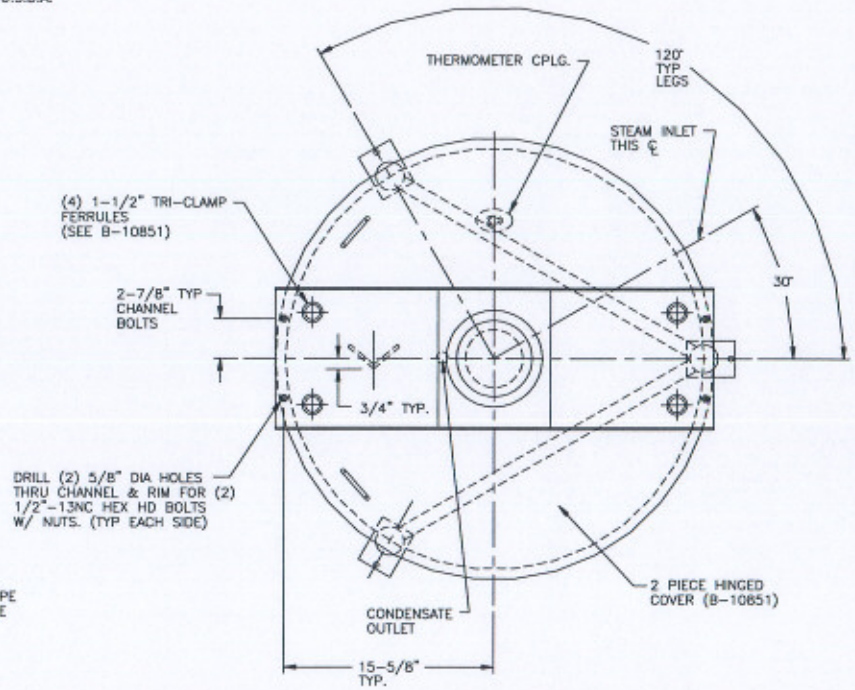
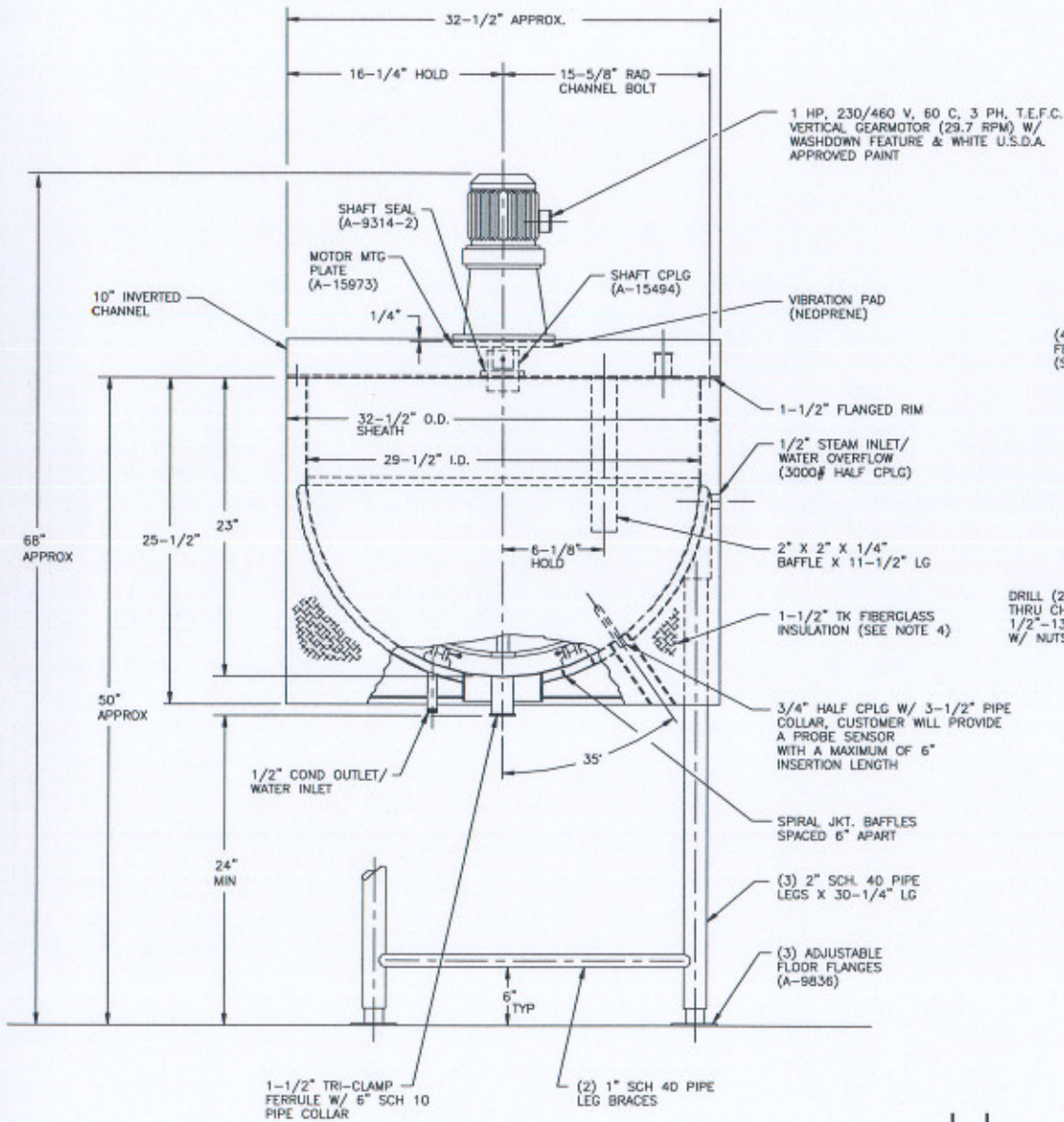
LEE SERIAL NO. C-3340-A

REFERENCE DRAWINGS

ASSEMBLY: C-5957

AGITATOR: B-10850


COVER: B-10851



TRUE ORIENTATION

- NOTES:
1. UNIT MUST BE BOLTED TO FLOOR BEFORE OPERATION.
 2. ALL MATERIAL S.S. UNLESS OTHERWISE NOTED.
 3. AGITATOR ASSEMBLY: B-10850
 4. JACKET AND SHELL AREAS TO BE PAINTED W/ THURMALOX PAINT PRIOR TO INSULATING.

ELEVATION ONLY

 PROCESS SYSTEMS & EQUIPMENT DIVISION OF LEE INDUSTRIES, INC. PHILIPSBURG, PA.		50 GALLON STYLE "D7S" KETTLE	
		SCALE: NONE	DATE: 03/07/96
DRAWN BY: RANCIK	DRAWING NO.	REV.	
APPROVED BY: JEB	DISK: 4C-49 PLT 1"=1"	C-5957	0

REV.	DESCRIPTION	DATE