

1992 Alfa Laval Contherm® Scraped-Surface Heat Exchangers Model: 6 x 9

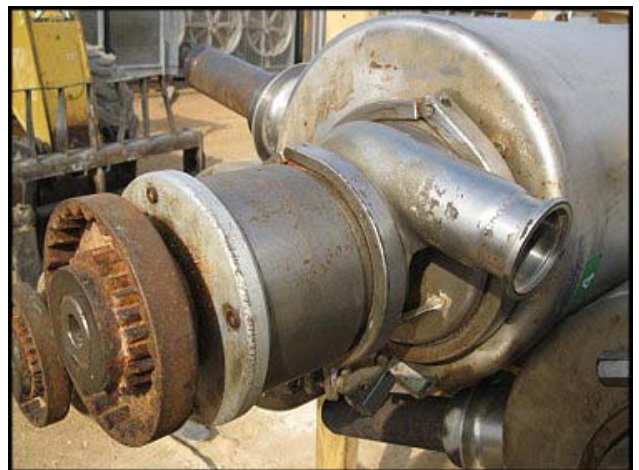
Mfg: Alfa Laval

Model: 6 x 9

Stock No: SPWS01

Serial No: HC(4833, 5201, 5233, 5200, 4811, 5234)NPC

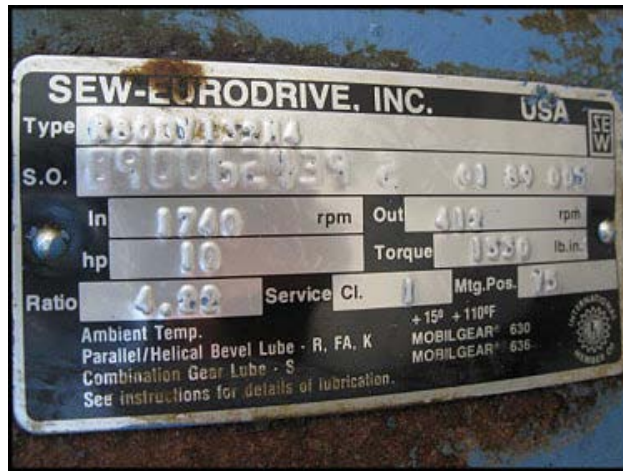
(6) Alfa Laval Contherm® Scraped-Surface Heat Exchangers. Model: 6 x 9. Serial No(s): HC4833NPC, HC5201NPC, HC5233NPC, HC5200NPC, HC4811NPC, HC5234NPC. Having chrome plated, nickel cylinders, these scraped-surface heat exchangers are designed to be used with flooded refrigerant (i.e. Freon or Ammonia) at working temperature ranges of: - 30°F to + 300°F. Maximum working pressures are: 300 psig (20 bar) product side, 250 psig (17 bar) media side. Contherm® scraped-surface heat exchangers are configured to provide gentle treatment of varieties of sensitive products or particulates by placing under various degrees of shear for mechanical mixing and scraping. Although designed for the food industry, the Contherm® meets the strictest sanitary standards, is widely used for aseptic processing applications, and has CIP capability. These can be mounted in vertical or horizontal positions to suit production needs. Scraper cylinder diameter: 4 in., nominal. Product ports: 2 in. OD. Overall dimensions: 7 ft. 6 in. L x 1 ft. 10 in. W x 1 ft. H.











(3) 1991-1992 Alfa Laval Surge Drum. Model: PSMR-004. S/N: 1140, 1161, 1162. Shell side MAWP: 250 psi at 650°F. MDMT: -20°F at 250 psi. Head and shell thickness: .250 in. Approximate overall dimensions: 2 ft. 11 in. L x 3 ft. 9 in. W x 10 ft. 1 in. H.

