

2006 Frick RWFII-222 Rotary Screw Compressor Package - 529 HP

Mfg: Frick

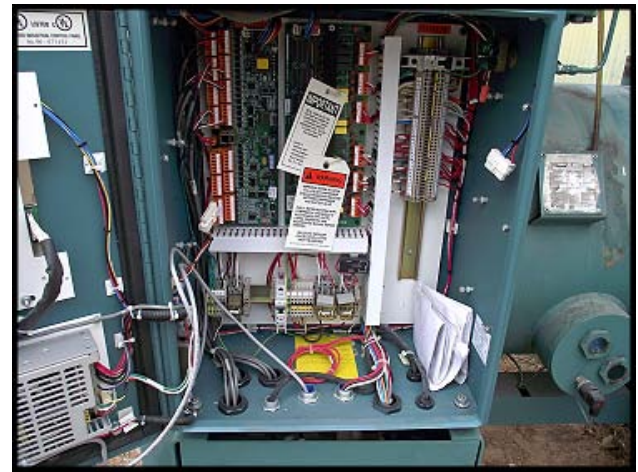
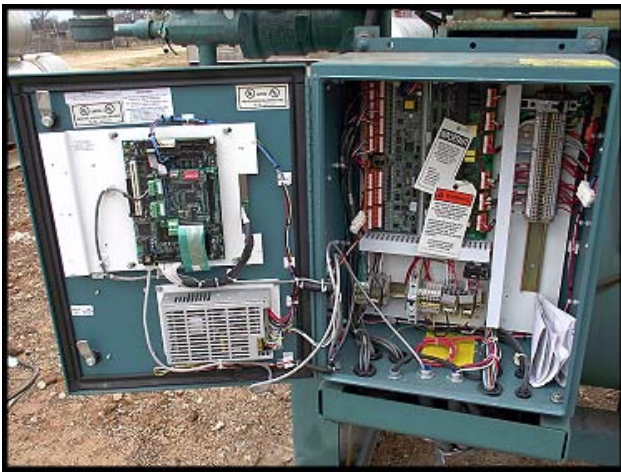
Model: RWF II 222 H

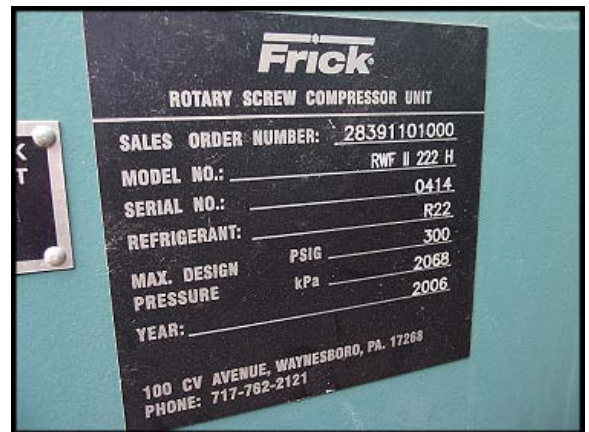
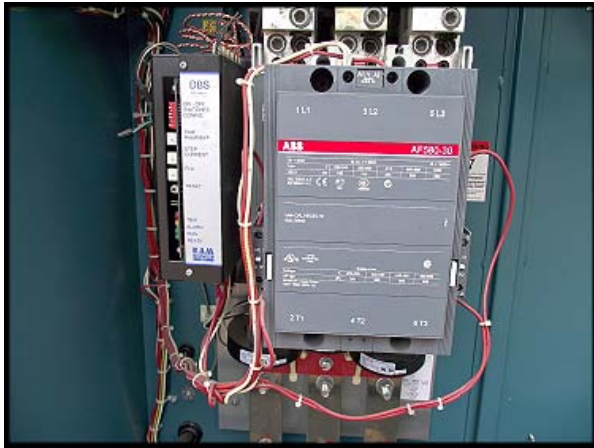
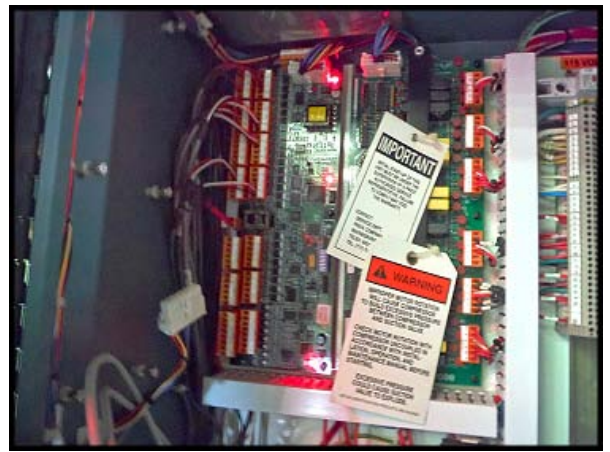
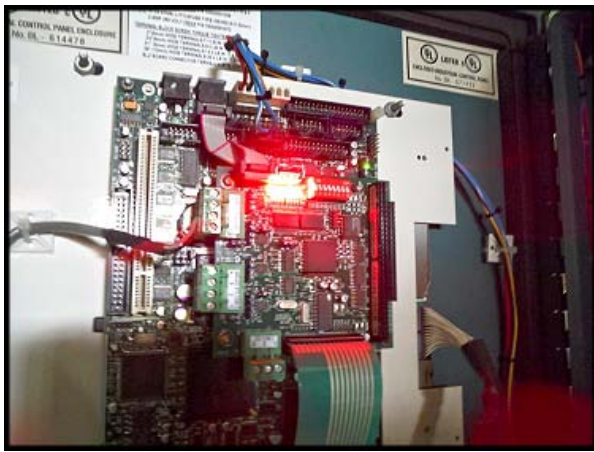
Stock No: SSNJ02.113a

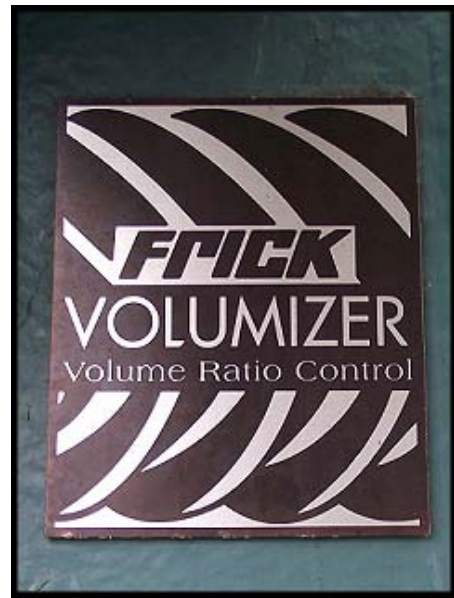
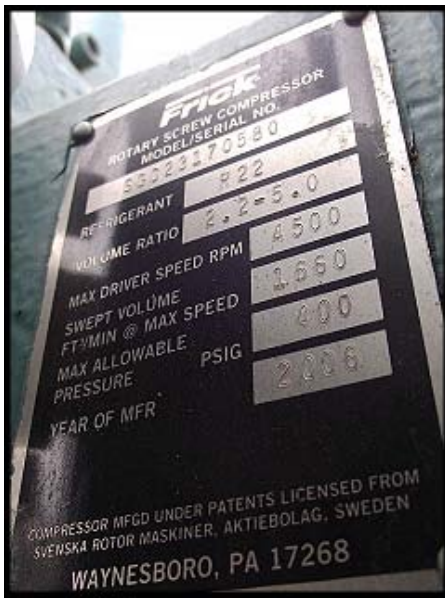
Serial No: 0414

2006 Frick RWFII-222 Rotary Screw Compressor Package - 529 HP. Frick Quantum LX control panel (115V, 50/60 Hz). Frick package sales order: 28391101000. Model: RWF II 222 H. Serial no: 0414. Refrigerant: R-22. Package max designed pressure: 300 PSIG. Rotary screw compressor model: SGC23170580. Refrigerant: R-22. Volume ratio: 2.2-5.0 Vi. Max driver speed: 4500 RPM. Swept volume at max speed: 1660 cu. ft./min. Max allowable pressure (compressor): 400 PSIG. Year: 2006. Frick Volumizer Volume Ratio Control. Ram electric motor: 529 HP, 3570 RPM, 3-phase, 60 Hz, 3-phase. Vessels certified by York Refrigeration with Nat'l Bd. numbers. ABB motor starter is mounted on the package. High Stage nominal rating: 1,311 CFM (2228 cu. meters/hour), 483 TR / 517 BHP (R-717), 434 TR / 572 BHP (R-507), ; ratings based on 20°F suction, 95°F (105°F R-22) condensing, with 10 degree superheat. Compressor run time: 41,685 hours. Unit weight: 11,200 lbs (5,080 kg). Overall dimensions: 175 in. L x 75 in. W x 89 in. H.









YORK INTERNATIONAL

SO# 013391 WO# 275314
 DWC# 208071 7/29/06
 BOM# FVW452L00

PART # 914A0121H44

TYPE 4 VOLTS 460 HZ 60 PH 3

LARGEST: HP 529 FLA 582

TOTAL: HP 529 FLA 588.5 WITHSTAND 85kA

INSTALL THIS EQUIPMENT IN ACCORDANCE WITH NEC REQUIREMENTS. CHECK ALL TERMINATIONS FOR TIGHTNESS PRIOR TO ENERGIZING THIS EQUIPMENT. FIELD INSTALLED CONDUCTORS SHOULD BE RATED 60°C MINIMUM ON CIRCUITS SUPPLYING 100 AMPS OR LESS, AND 75°C MINIMUM ABOVE 100 AMPS. USE COPPER CONDUCTORS ONLY.

WARNING
 THE OPENING OF THE BRANCH-CIRCUIT PROTECTIVE DEVICE MAY INDICATE THAT A FAULT CURRENT HAS BEEN INTERRUPTED. TO REDUCE THE RISK OF FIRE OR ELECTRICAL SHOCK, COMPONENTS SHOULD BE EXAMINED AND REPLACED IF DAMAGED. IF BURNOUT OF THE CURRENT ELEMENT OCCURS, THE COMPLETE OVERLOAD RELAY MUST BE REPLACED.

78963 LA-207384

FRICK
 -VOLTS-
 CONTROL-(X) 115VAC () 230VAC () 24VDC
 HEATERS-() 115VAC () 230VAC
 -AMPS-
 CONTROL 5 HEATERS _____
 PHASE 1 HERTZ 50/60
 I.D. CODE QUANTUM

MANUFACTURED BY
 YORK REFRIGERATION- FRICK
 WAYNESBORO, PA - UL FILE #E142909

SKID-MOUNTED DRS COMPRESSOR MOTOR STARTER DATA SHEET

CUSTOMER: FRICK CUSTOMER CODE FRIC01
 JOB # 013391 P.O.# P245792 CUSTOMER'S SALES ORDER # 28301
 QTY. 2 RAM ASSEMBLY # FV452L00
 SCHEMATIC DRAWING # 208071 REV. A LAYOUT DRAWING # 206604 REV. H

STARTER SPECIFICATIONS

INCOMING POWER
 VOLTS: 460
 HZ: 60

COMPRESSOR MOTOR DATA
 H.P.: 529 STALL TIME: 6
 FLA: 582 LRA: 4408 LRC: 756.0 %

OIL PUMP MOTOR DATA
 H.P.: _____
 FLA: _____

MAIN CIRCUIT BREAKER
 PR211 Trip Settings: L - Long-Time Pick-Up: (11) _____ 1.0
 Long-Time Delay: (11) _____
 I - Instantaneous Trip Delay: (11) _____ 6

DRS SETTINGS FOR QUANTUM NETWORK

CONTROL BOARD SETTINGS
 SW1 (FLA ROTARY SWITCH) Set to 6
 SW2 (CURRENT TRIP) Set to 2 (250% of FLA)
 SW3 (RAMP TIME) Set to 1 (6 seconds)
 SW4 (CONFIGURATION DIP SWITCH)

JOB # 013391 SHEET 1 OF 1

STARTER SPECIFICATIONS

INCOMING POWER
 VOLTS: 460
 HZ: 60

COMPRESSOR MOTOR DATA
 H.P.: 529 STALL TIME: 6
 FLA: 582 LRA: 4408 LRC: 756.0 %

OIL PUMP MOTOR DATA
 H.P.: _____
 FLA: _____

MAIN CIRCUIT BREAKER
 PR211 Trip Settings: L - Long-Time Pick-Up: (11) _____
 Long-Time Delay: (11) _____
 I - Instantaneous Trip Delay: (11) _____

DRS SETTINGS FOR QUANTUM NETWORK

CONTROL BOARD SETTINGS
 SW1 (FLA ROTARY SWITCH) Set to 6
 SW2 (CURRENT TRIP) Set to 2 (250% of FLA)
 SW3 (RAMP TIME) Set to 1 (6 seconds)
 SW4 (CONFIGURATION DIP SWITCH)