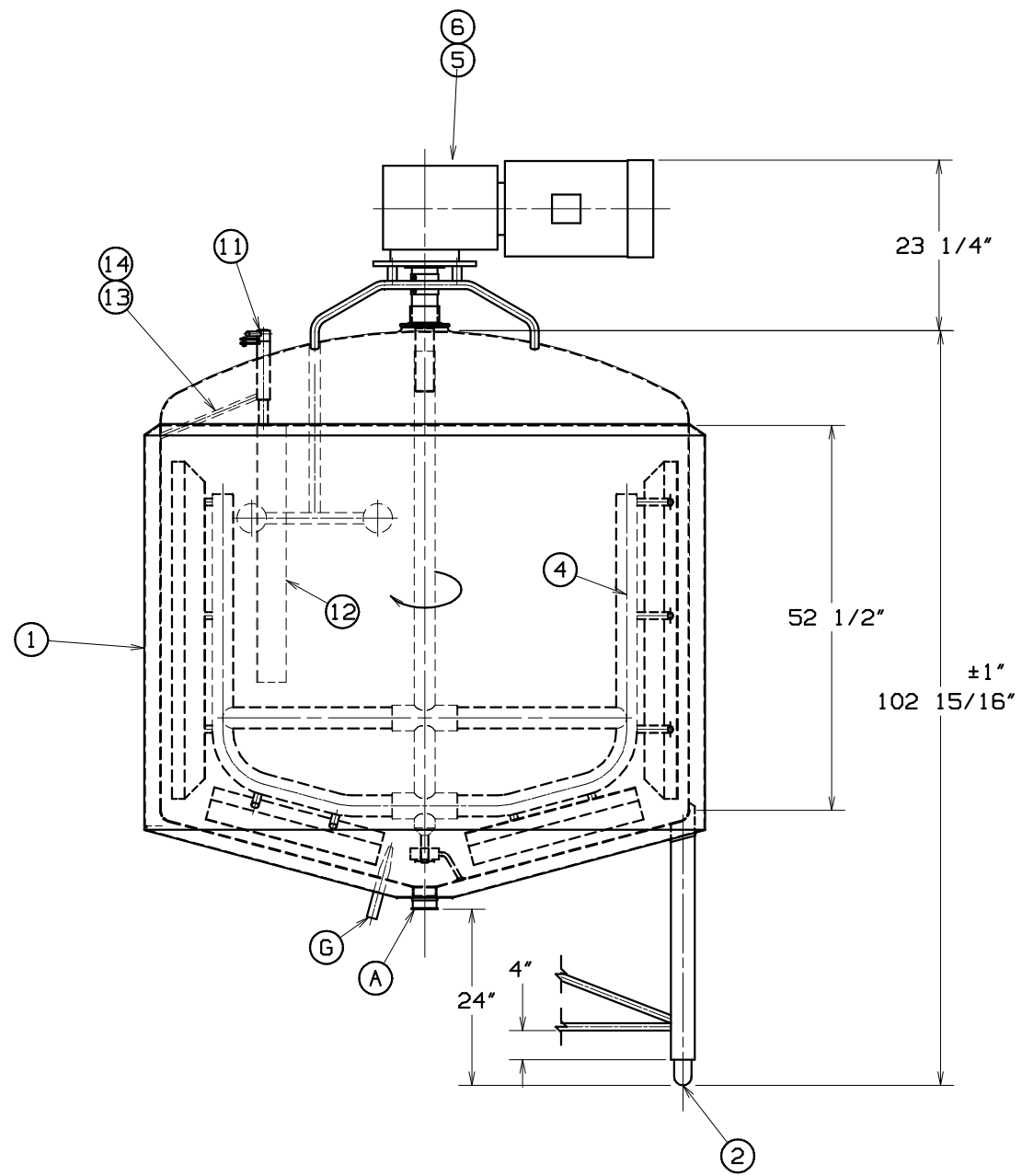
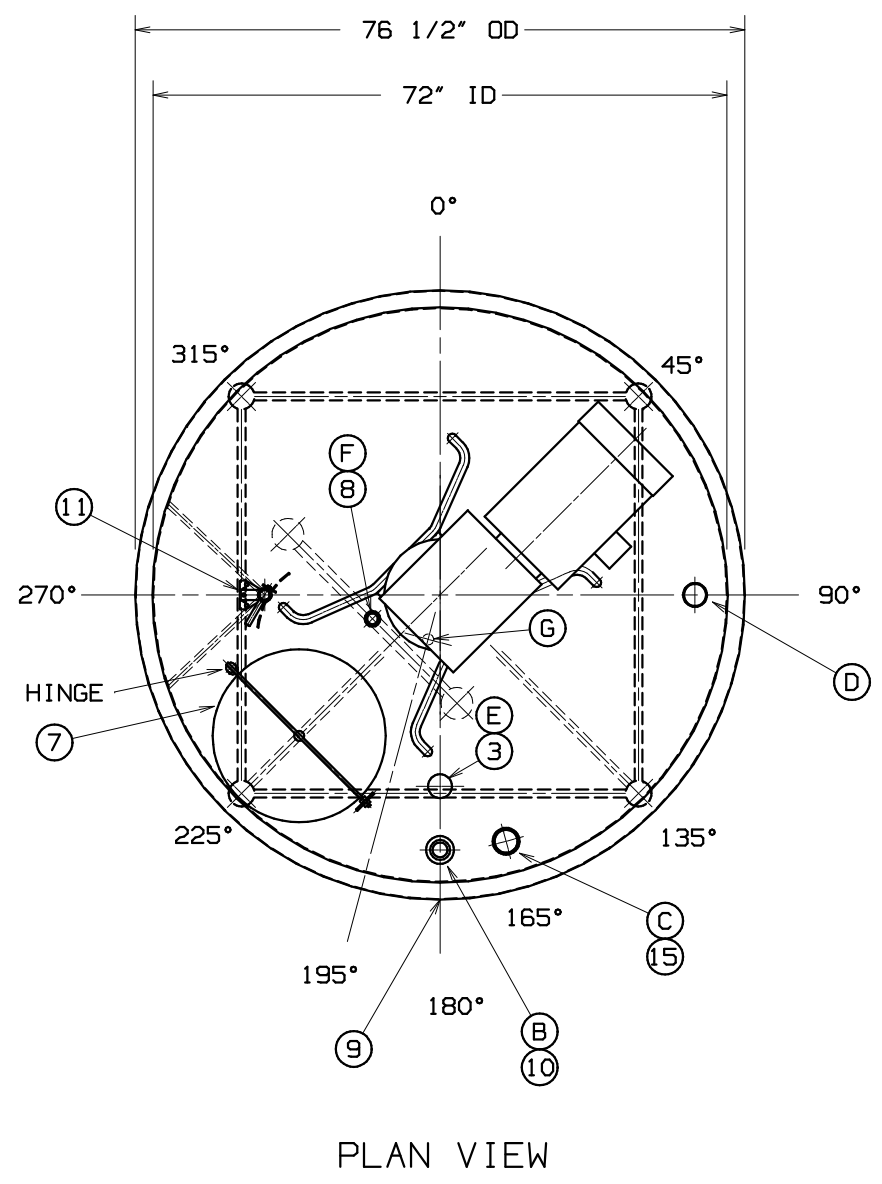


REVISIONS				
REV	ECN NO.	DESCRIPTION	DATE	CHG. BY
.	A3511	REL FOR 39-33505	11/25/86	RPD
A	A3631	REL FOR 39-34146	01/30/87	RPD



NOTE: SEE PLAN VIEW FOR TRUE LOCATIONS
2" INSULATION SIDE & CONE

ORD# 39-33505 RICHMOND, VA
SERIAL NO E-3925
ORD# 39-34146 LOS ANGELES, CA 01/30/87
SERIAL NO E-4842

QUOTE #8610-39-532

ITEM	PART NUMBER	DESCRIPTION	QTY
15	10AP276734	NO-FOAM INLET (REMOVABLE) 2 1/2" TRI-CLAMP CONN	1
14	723SH007J	BRACE-3/4" DIA 304 STAIN STL 2 PCS X 18" LG	4.5
13	01HP243762	COLLAR	2
12	10AP400918	BAFFLE-ADJUSTABLE	1
11	10XP292793	AFFILITATE ADJUSTABLE BAFFLE	1
10	10AP186888	NO-FOAM INLET (REMOVABLE) 2" TRI-CLAMP CONN	1
9	10XP300996	AFFILITATE DECAL MTG	1
8	10XP266088	AFFILITATE CIP MTG MOD 310-04-24 1 1/2" TRI-CLAMP CONN	1
7	10WP242319	KIT-AFFILITATE 18" ID HINGED & GASKETED MANNWAY	1
6	10WP400470	KIT-AFFILITATE MOTOR MTG	1
5	501S3481P	MOTOR 3 HP 13.5-6.75 RPM TEFC SGL WIND CON TORQ 3/60/460V	1
4	-	TOTAL SWEEP AGIT-HEAVY DUTY (10AP423439 REF)	-
3	09AP198519	VENT SCREEN 2 1/2"	1
2	10AP130318	BALL FOOT 2" IPS SS-ADJUSTABLE	4
1	10AP423436	BODY & PAN	1

MARK	TYPE	SERVICE	SIZE
G	WELL	3A7 (TAYLOR 26P397) NPF THRD	1 1/4"
F	TRI-CLAMP	CIP CONN	1 1/2"
E	SCREEN	VENT	2 1/2"
D	BUTT WELD	INLET CONN	3" OD
C	TRI-CLAMP	NO FOAM INLET CONN	2 1/2"
B	TRI-CLAMP	NO FOAM INLET CONN	2"
A	TRI-CLAMP	OUTLET CONN	3"

EQUIPMENT SPECIFICATIONS				UNLESS OTHERWISE SPECIFIED		
MATERIAL TYPE	PRODUCT CONTACT SURFACES: TYPE 304 SS	JACKET/STRUCTURAL SURFACES: TYPE 304 SS	SPECIFICATION	HEAT TRANS SURFACE	VESEL	FRACTIONS
MATERIAL FINISH	INTERNAL: #4 POLISH (150 GRIT)	EXTERNAL: #102 FINISH (100 GRIT)	DESIGN TEMP °F	0	200*	DECIMALS
WELD FINISH	INTERNAL: #4 POLISH (150 GRIT)	EXTERNAL: #102 FINISH (100 GRIT)	DESIGN PRESS (PSIG)	0	ATM	ANGLES
INSULATION	FOAM POLYURETHANE/FIBERGLAS PAINT		HYDROSTATIC TEST PRESS (PSIG)	0	0	X/XX ± 1/16
APPLICABLE CODES/SPECIFICATIONS	POLISH PER S-542	DYE CHECK PER S-320, TEST PER S-595	VACUUM	0	0	.XX ± .
LUBE PER	S-683		DESIGN (IN. HG)	0	0	.XXX ± .
PRODUCT DATA			HYDROGRAPH (IN)	0	0	X/X ± 1°
SUITABLE PRESSURE RELIEF VALVES MUST BE INSTALLED BY CUSTOMER TO VESSEL AND/OR HEAT TRANSFER SURFACE, PRIOR TO OPERATION.			HEAT TRANSFER MEDIA	0	0	
			ASPH. CODE	0	NO	
			STAMPED	0	NO	
			DESIGN PER			

CAD DRAWING		CUSTOMER INFORMATION		LIST OF MATERIALS	
ORDER # NOTED	KRAFT DAIRY GROUP	FUNCTION	DATE	MAT'L: NOTED	SIZE
DRAWN	TDB	11/03/86	INITIAL ASSY NO.	DRAWING NO.	REV
CHECKED				10BP423291	A
APPROVED	CAC	01/30/87	SCALE	1/12	QTY UNIT
				EA	SHEET 1 OF 1