

API Schmidt Bretten Plate Heat Exchanger

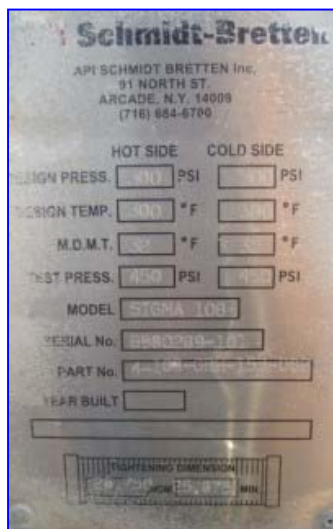
Mfg: API Schmidt Bretten Inc.

Model: Sigma 108

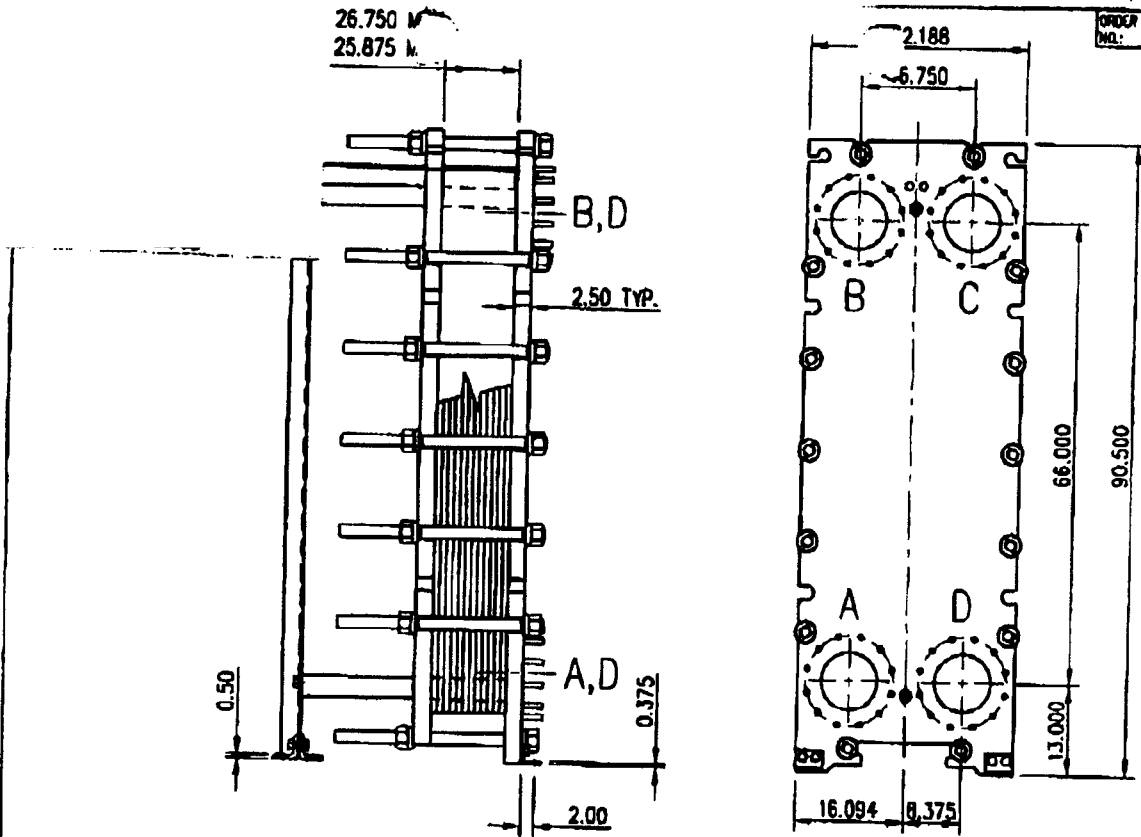
Stock No. 105.VTI01.15

Serial No. B980289-101

1998 API Schmidt-Bretten Plate Heat Exchanger. Model: SIGMA 108, S/N: B980289-101, P/N: 4-108-GBH-153-002. 316 Stainless steel plates: Qty: 153. Heat transfer surface area: Approx. 1,524 sq.ft. Design pressure: 300 psig. Design temperature: 300 °F. Minimum temperature: 32 °F. Test Pressure: 450 psi. Fixed end ports: (4) 8 in. Overall dimensions: 70 in. L x 33-1/2 in. W x 82 in. H. Cool 752 gpm of oil from 250 °F to 155 °F, using 1,600 gpm of glycol in at 130 °F and out at 152.7 °F. The oil section had a pressure drop of 4 psi and the glycol section had a pressure drop of 9 psi.



ORDER NO.: 8980289-101



S108BSSC

NOTES
 1. DIMENSION SHOWN IN INCHES.
 2. TOLERANCES: ±.06".

CONSTRUCTION			CONNECTIONS				
FRAME SIZE:	1500		FLUID	PORT	SIZE	TYPE	MATERIAL
PLATE ARR'T:	1 x 76H		HOT (IN)	A	8"	300# ANSI STUDD	CARBON STEEL
NO. OF PLATES:	153		HOT (OUT)	B	8"	300# ANSI STUDD	CARBON STEEL
PLATES:	316 STAINLESS STEEL / 0.7mm		COLD (IN)	C	8"	300# ANSI STUDD	CARBON STEEL
MAX NO. of PLATES:	342		COLD (OUT)	D	8"	300# ANSI STUDD	CARBON STEEL
GASKET MTL:	HYDROGENATED NITRILE		API Schmidt-Bretten PLATE HEAT EXCHANGERS SIGMA 108 PART NUMBER 4-108-GBH-153-002				
DESIGN CONDITIONS	HOT	COLD					
DESIGN PRES. (PSIG)	300	300					
TEST PRES. (PSIG)	450	450					
DESIGN TEMP. (F)	300	300					
MIN. TEMP. (F)	32	32	DRAWN CPM	TITLE			REV.
WEIGHT DRY/FILLED:	7250 / 8565		DATE 10/12/98	SIZE	PART NUMBER		
			DATE 10/13/98	A	4-108-GBH-153-002		

API Schmidt-Bretten

Plate Heat Exchangers

Plate Pack Arrangement

Contract Number: B980289 **Document Number:** 4-108-GBH-153-002PA

Plate Grouping: 1 x 76H Left (Hot) Side
1 x 76H Right (Cold) Side

Plate Summary:

<u>Part Number</u>	<u>Qty</u>	Plate Pack Dimension:
3-108-B7HK-R2N23	1	
3-108-B7HK-R0N16	1	28 3/4 inches Maximum
3-108-B7HK-R0N03	151	25 7/8 inches Minimum

153 Total plates

Arrangement:	<u>Plate No.</u>	<u>Part Number</u>	<u>Figure</u>	Gaskets face fixed head.
	1	3-108-B7HK-R2N23	R ACR/ECR	
	2	3-108-B7HK-R0N03	L CL	
	3	3-108-B7HK-R0N03	R CR	
	4	3-108-B7HK-R0N03	L CL	
	5	3-108-B7HK-R0N03	R CR	
	6	3-108-B7HK-R0N03	L CL	
	7	3-108-B7HK-R0N03	R CR	
	8	3-108-B7HK-R0N03	L CL	
	9	3-108-B7HK-R0N03	R CR	
	10	3-108-B7HK-R0N03	L CL	
	11	3-108-B7HK-R0N03	R CR	
	12	3-108-B7HK-R0N03	L CL	
	13	3-108-B7HK-R0N03	R CR	
	14	3-108-B7HK-R0N03	L CL	
	15	3-108-B7HK-R0N03	R CR	
	16	3-108-B7HK-R0N03	L CL	
	17	3-108-B7HK-R0N03	R CR	
	18	3-108-B7HK-R0N03	L CL	
	19	3-108-B7HK-R0N03	R CR	
	20	3-108-B7HK-R0N03	L CL	
	21	3-108-B7HK-R0N03	R CR	
	22	3-108-B7HK-R0N03	L CL	
	23	3-108-B7HK-R0N03	R CR	
	24	3-108-B7HK-R0N03	L CL	
	25	3-108-B7HK-R0N03	R CR	
	26	3-108-B7HK-R0N03	L CL	
	27	3-108-B7HK-R0N03	R CR	
	28	3-108-B7HK-R0N03	L CL	
	29	3-108-B7HK-R0N03	R CR	
	30	3-108-B7HK-R0N03	L CL	
	31	3-108-B7HK-R0N03	R CR	
	32	3-108-B7HK-R0N03	L CL	
	33	3-108-B7HK-R0N03	R CR	
	34	3-108-B7HK-R0N03	L CL	
	35	3-108-B7HK-R0N03	R CR	
	36	3-108-B7HK-R0N03	L CL	
	37	3-108-B7HK-R0N03	R CR	

det 2/16/98
B980289-101PA.xls

Page 1 of 1

API Schmidt-Bretten

Plate Heat Exchangers

Arrangement:	Plate No.	Part Number	Figure	Gaskets face fixed head.
	38	3-108-B7HK-R0N03	L CL	
	39	3-108-B7HK-R0N03	R CR	
	40	3-108-B7HK-R0N03	L CL	
	41	3-108-B7HK-R0N03	R CR	
	42	3-108-B7HK-R0N03	L CL	
	43	3-108-B7HK-R0N03	R CR	
	44	3-108-B7HK-R0N03	L CL	
	45	3-108-B7HK-R0N03	R CR	
	46	3-108-B7HK-R0N03	L CL	
	47	3-108-B7HK-R0N03	R CR	
	48	3-108-B7HK-R0N03	L CL	
	49	3-108-B7HK-R0N03	R CR	
	50	3-108-B7HK-R0N03	L CL	
	51	3-108-B7HK-R0N03	R CR	
	52	3-108-B7HK-R0N03	L CL	
	53	3-108-B7HK-R0N03	R CR	
	54	3-108-B7HK-R0N03	L CL	
	55	3-108-B7HK-R0N03	R CR	
	56	3-108-B7HK-R0N03	L CL	
	57	3-108-B7HK-R0N03	R CR	
	58	3-108-B7HK-R0N03	L CL	
	59	3-108-B7HK-R0N03	R CR	
	60	3-108-B7HK-R0N03	L CL	
	61	3-108-B7HK-R0N03	R CR	
	62	3-108-B7HK-R0N03	L CL	
	63	3-108-B7HK-R0N03	R CR	
	64	3-108-B7HK-R0N03	L CL	
	65	3-108-B7HK-R0N03	R CR	
	66	3-108-B7HK-R0N03	L CL	
	67	3-108-B7HK-R0N03	R CR	
	68	3-108-B7HK-R0N03	L CL	
	69	3-108-B7HK-R0N03	R CR	
	70	3-108-B7HK-R0N03	L CL	
	71	3-108-B7HK-R0N03	R CR	
	72	3-108-B7HK-R0N03	L CL	
	73	3-108-B7HK-R0N03	R CR	
	74	3-108-B7HK-R0N03	L CL	
	75	3-108-B7HK-R0N03	R CR	
	76	3-108-B7HK-R0N03	L CL	
	77	3-108-B7HK-R0N03	R CR	
	78	3-108-B7HK-R0N03	L CL	
	79	3-108-B7HK-R0N03	R CR	
	80	3-108-B7HK-R0N03	L CL	
	81	3-108-B7HK-R0N03	R CR	
	82	3-108-B7HK-R0N03	L CL	
	83	3-108-B7HK-R0N03	R CR	
	84	3-108-B7HK-R0N03	L CL	
	85	3-108-B7HK-R0N03	R CR	

dat 2/16/98
B980289-101PA.xls

API Schmidt-Bretten

Plate Heat Exchangers

Arrangement:	Plate No.	Part Number	Figure	Gaskets face fixed head.
	86	3-108-B7HK-R0N03	L CL	
	87	3-108-B7HK-R0N03	R CR	
	88	3-108-B7HK-R0N03	L CL	
	89	3-108-B7HK-R0N03	R CR	
	90	3-108-B7HK-R0N03	L CL	
	91	3-108-B7HK-R0N03	R CR	
	92	3-108-B7HK-R0N03	L CL	
	93	3-108-B7HK-R0N03	R CR	
	94	3-108-B7HK-R0N03	L CL	
	95	3-108-B7HK-R0N03	R CR	
	96	3-108-B7HK-R0N03	L CL	
	97	3-108-B7HK-R0N03	R CR	
	98	3-108-B7HK-R0N03	L CL	
	99	3-108-B7HK-R0N03	R CR	
	100	3-108-B7HK-R0N03	L CL	
	101	3-108-B7HK-R0N03	R CR	
	102	3-108-B7HK-R0N03	L CL	
	103	3-108-B7HK-R0N03	R CR	
	104	3-108-B7HK-R0N03	L CL	
	105	3-108-B7HK-R0N03	R CR	
	106	3-108-B7HK-R0N03	L CL	
	107	3-108-B7HK-R0N03	R CR	
	108	3-108-B7HK-R0N03	L CL	
	109	3-108-B7HK-R0N03	R CR	
	110	3-108-B7HK-R0N03	L CL	
	111	3-108-B7HK-R0N03	R CR	
	112	3-108-B7HK-R0N03	L CL	
	113	3-108-B7HK-R0N03	R CR	
	114	3-108-B7HK-R0N03	L CL	
	115	3-108-B7HK-R0N03	R CR	
	116	3-108-B7HK-R0N03	L CL	
	117	3-108-B7HK-R0N03	R CR	
	118	3-108-B7HK-R0N03	L CL	
	119	3-108-B7HK-R0N03	R CR	
	120	3-108-B7HK-R0N03	L CL	
	121	3-108-B7HK-R0N03	R CR	
	122	3-108-B7HK-R0N03	L CL	
	123	3-108-B7HK-R0N03	R CR	
	124	3-108-B7HK-R0N03	L CL	
	125	3-108-B7HK-R0N03	R CR	
	126	3-108-B7HK-R0N03	L CL	
	127	3-108-B7HK-R0N03	R CR	
	128	3-108-B7HK-R0N03	L CL	
	129	3-108-B7HK-R0N03	R CR	
	130	3-108-B7HK-R0N03	R CR	
	131	3-108-B7HK-R0N03	R CR	
	132	3-108-B7HK-R0N03	R CR	
	133	3-108-B7HK-R0N03	R CR	

det 2/16/98
B980289-101PA.xls

API Schmidt-Bretten**Plate Heat Exchangers**

Arrangement:	Plate No.	Part Number	Figure	Gaskets face fixed head.
	134	3-108-B7HK-R0N03	R CR	
	135	3-108-B7HK-R0N03	R CR	
	136	3-108-B7HK-R0N03	R CR	
	137	3-108-B7HK-R0N03	R CR	
	138	3-108-B7HK-R0N03	R CR	
	139	3-108-B7HK-R0N03	R CR	
	140	3-108-B7HK-R0N03	R CR	
	141	3-108-B7HK-R0N03	R CR	
	142	3-108-B7HK-R0N03	R CR	
	143	3-108-B7HK-R0N03	R CR	
	144	3-108-B7HK-R0N03	R CR	
	145	3-108-B7HK-R0N03	R CR	
	146	3-108-B7HK-R0N03	R CR	
	147	3-108-B7HK-R0N03	R CR	
	148	3-108-B7HK-R0N03	R CR	
	149	3-108-B7HK-R0N03	R CR	
	150	3-108-B7HK-R0N03	R CR	
	151	3-108-B7HK-R0N03	R CR	
	152	3-108-B7HK-R0N03	R CR	
	153	3-108-B7HK-R0N16	R PR	

dat 2/16/98
B980289-101PA.xls

Page 4 of 4

API Schmidt-Bretten

Plate Heat Exchangers

Rev: 3	ASSEMBLY PART NUMBERS	Engineering Standards	Deleted: 1
Date: 3/12/01		ES-3.001	Deleted: 4/10/00
Approved:		Sheet No. 5 of 7	Deleted: 6

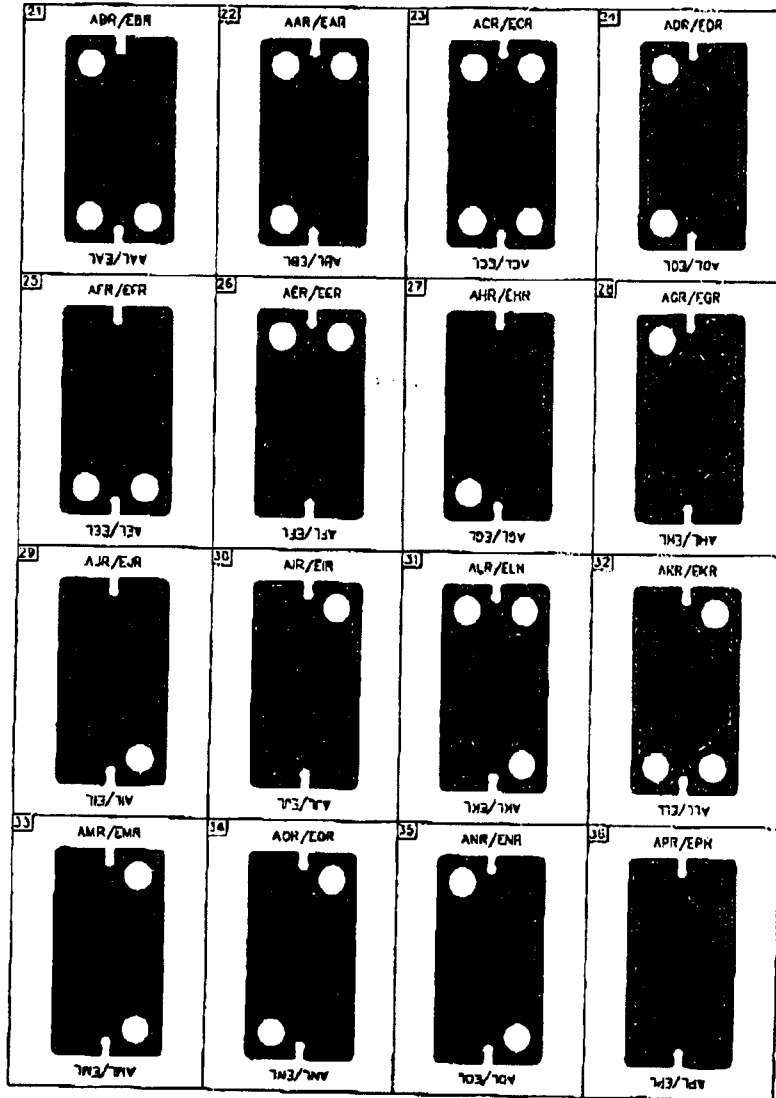
Table C - Plate Punch Codes

01 BR 7A	02 AR 7B	03 CR 7C	04 DR 7D
05 FR 7E	06 ER 7F	07 HR 7G	08 GR 7H
09 JR 7I	10 IR 7J	11 LR 7K	12 KR 7L
13 MR 7M	14 OR 7N	15 NR 7O	16 PR 7P

API Schmidt-Bretten

Plate Heat Exchangers

Rev: <u>3</u>	ASSEMBLY PART NUMBERS	Engineering Standards	Deleted: 1
Date: <u>3/12/01</u>		ES-3.001	Deleted: 4/10/00
Approved:		Sheet No. 6 of 7	Deleted: 6



TOTAL P.07