

2000 Safeline Metal Detector

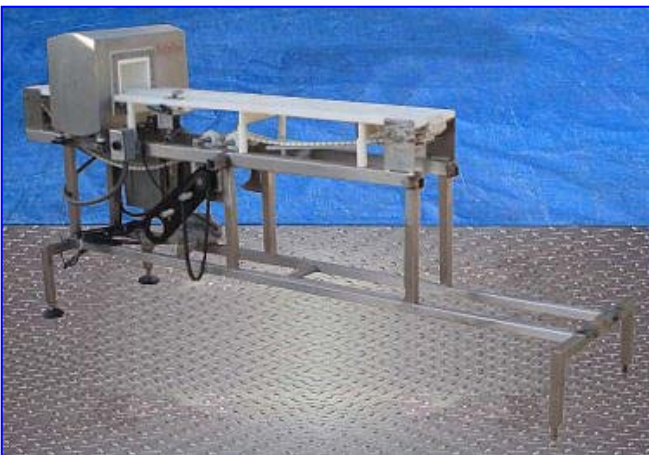
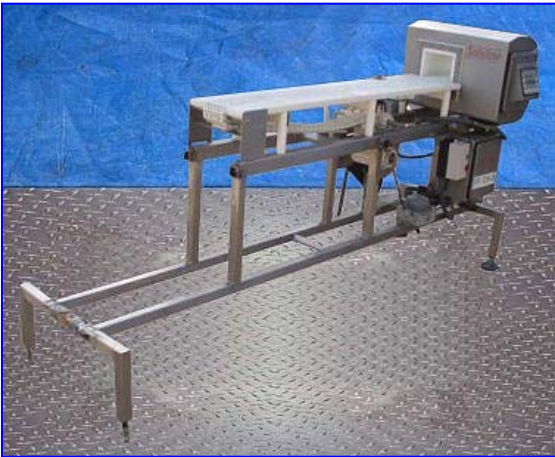
Mfg: Safeline

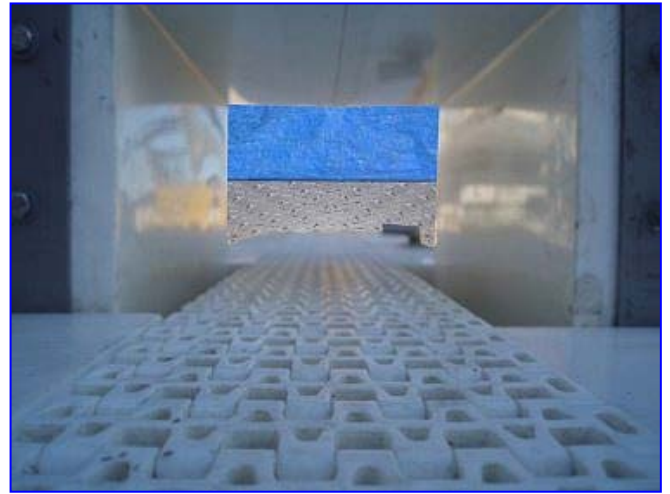
Model: 71185 / V3

Stock No: WADS706

Serial No: 41811

2000 Safeline Metal Detector. Model: 71185 / V3. Serial No. 41811. Module serial no. 59331. Version: XT1.02. Aperture/product clearance: 6 in. W x 4-1/2 in. H above the conveyor belt. Conveyor belt dimensions: 6 ft. 2 in. L x 4 in. W. Infeed/exit height: 3 ft. / 2 ft.10 in. Overall dimensions: 8 ft. 3 in. L x 2 ft. 4 in. W x 3 ft. 9 in. H.





MODULE SER No 59331			FREQ		STAG	
STANDARD MODULE	✓	600		1		
REJECT CONFORMATION	✓	300	✓	2		
FAST RECOVERY		100	✓	3	✓	
SLOW SPEED		25		4		
FERROUS IN FOIL		FE		5		
COM 1	2WIRE	4WIRE ✓	180 KEYPANEL			
COM 2	RS485	RS232 ✓	S/S	✓	P	
HARDWARE VERSION		V3c				
FIRMWARE VERSION		XT 1.02				
SPECIAL						
WARNING: if a module replacement is necessary the frequency and options must be the same as the original module IF IN DOUBT CONTACT YOUR SUPPLIER.						