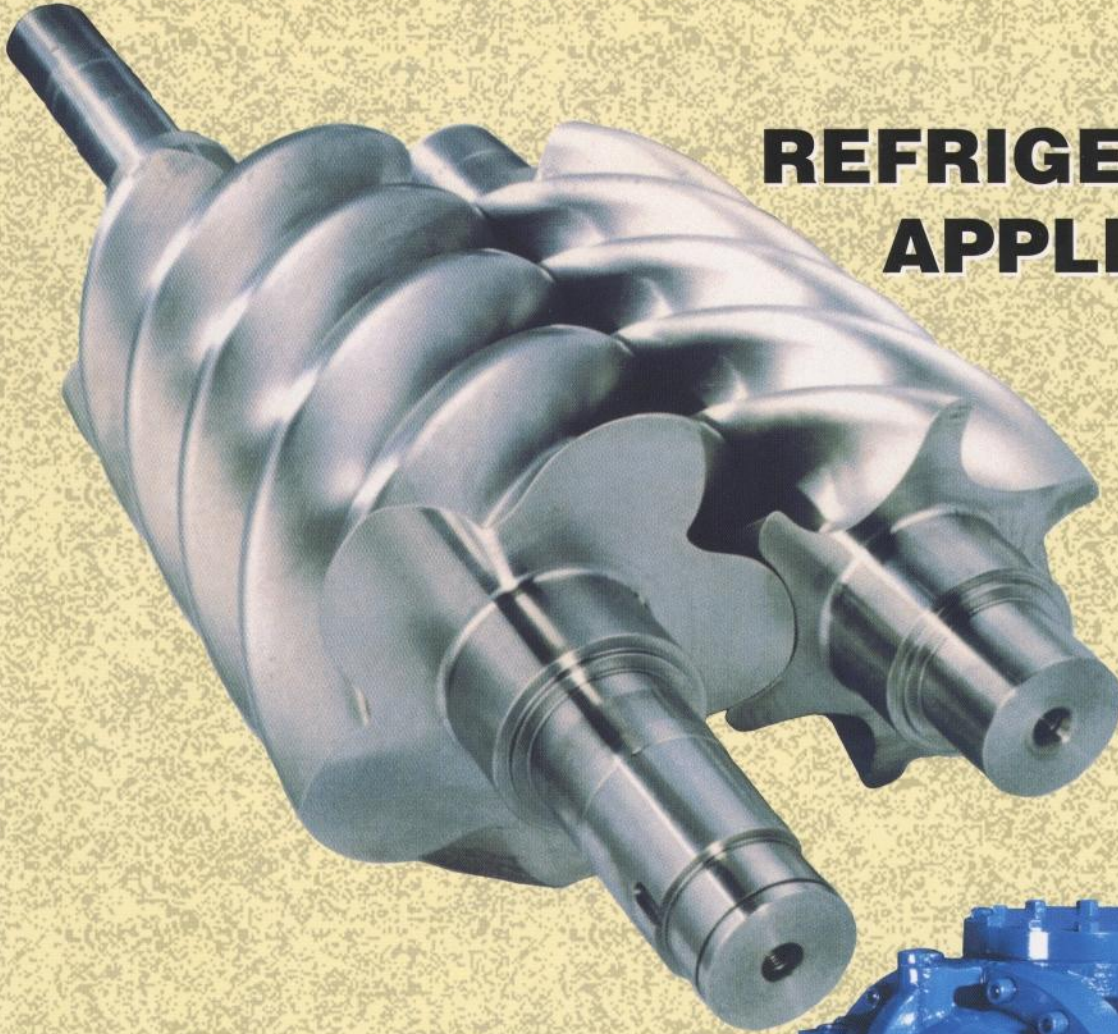


KOBELCO

**GAS &
REFRIGERATION
APPLICATION**



**SCREW
COMPRESSORS**

KOBELCO NB & GB SERIES

STATE OF

KOBELCO NB and GB Series Screw Compressors

The right choice for your needs...

Backed by 44 years of experience, KOBELCO has been a leading company for screw compressors. NB and GB series has been developed for gas and refrigeration application by concentrating accumulated expertise and the most advanced technologies.

VARIABLE Vi

Since suction conditions may change, appropriate Vi (internal compression ratio) is to be changed. KOBELCO's patented⁽¹⁾ built-in variable Vi device gives you greater flexibility and higher efficiency (selectable with fixed Vi).

HIGH EFFICIENCY

KOBELCO's own patented⁽²⁾ "Super Rotor" profile with appropriately selected 5/6 or 4/6 lobe combination assures the highest efficiency in the industry.

LONG LIFE BEARING

Premium anti-friction ball bearings are selected. The patented⁽³⁾ double balance piston ensures optimum thrust force.

SLIDE VALVE

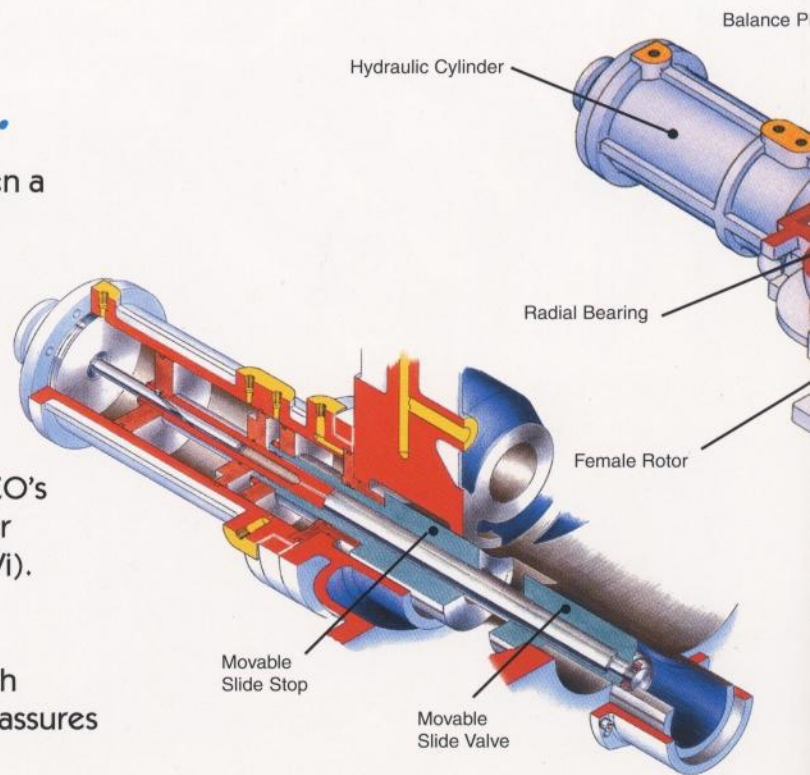
Gives high part load efficiency with simple control.

WIDE SELECTION

Up to 350 psig and 6400 cfm

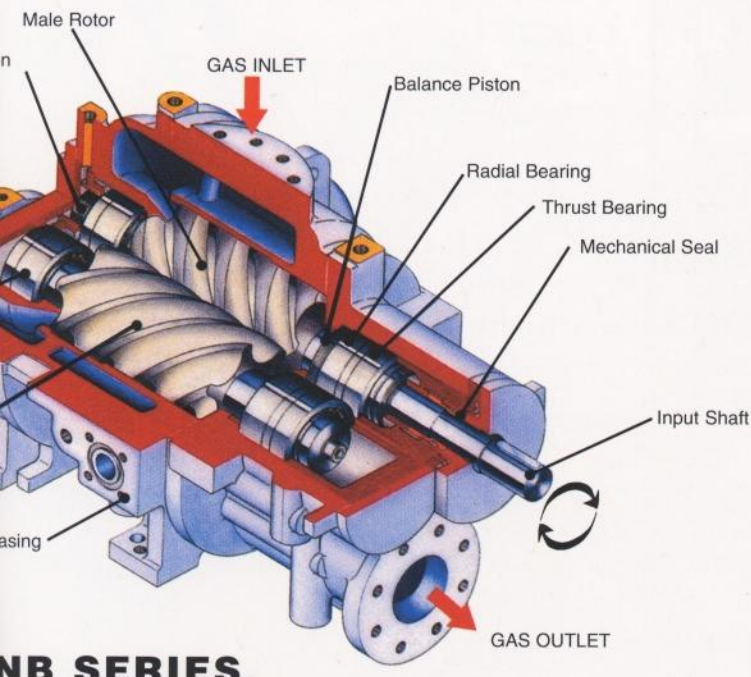
USER-FRIENDLY CONSTRUCTION

- All discharge ports located side or axial for easy access.
- No yellow metals are used.
- CW rotation as seen from driver, can be directly coupled to the standard engine.

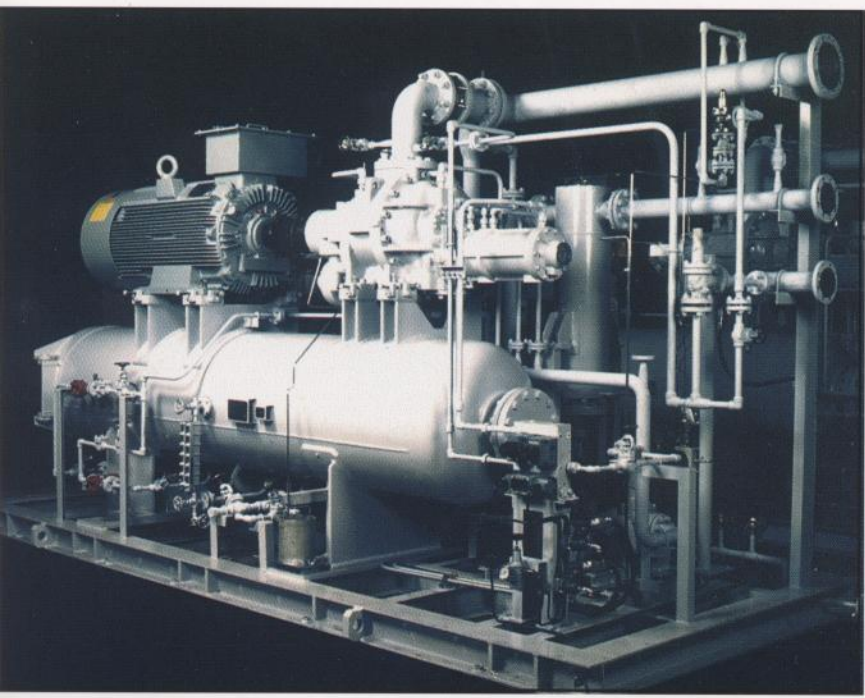


SCREW COMPRESSORS

THE ART!



NB SERIES



19MNB Gas Turbine Fuel Booster

Series	Model	Displacement @3600 rpm		Displacement @1800 rpm	
		CFM	m ³ /hr	CFM	m ³ /hr
GB	11S	155	264	78	132
	13S	229	389	115	195
	13L	286	487	143	243
	16S	420	714	210	357
	16L	508	864	254	432
NB	19M	672	1143	336	571
	19L	907	1540	453	770
	19LL	1065	1809	532	905
	23M	1268	2154	634	1077
	23L	1709	2903	854	1452
	23LL	2068	3513	1034	1756
	28M	2088	3548	1044	1774
	28L	2814	4781	1407	2391
	28LL	3361	5710	1680	2855
	32M	3412	5797	1706	2899
	32L	4265	7247	2133	3623
	32LL	6397	10868	3199	5434

Models 23M through 32LL are made in Japan



KOBELCO Support

KOBELCO's commitment to its products is unsurpassed in the industry. Our 180,000 square foot modern facility is located in Elkhart, Indiana and totally dedicated to our screw compressors.

We design, manufacture, and support our products from the heartland of the United States of America. We stock a complete line of replacement parts, including rotors, casings, and all internal parts.

Offices & Plant, USA

3000 Hammond Avenue

Elkhart, IN 46516

TEL 219-295-3145

FAX 219-293-1641

E-mail: rotating@kocoa.com

<http://www.kocoa.com>

Tokyo Office, Japan

9-12, Kita-Shinagawa 5-chome

Shinagawa-ku,

Tokyo, 141-8688 Japan

TEL +81-3-5739-6711

FAX +81-3-5739-6991/6992

E-mail: rotating@topics.kobelco.co.jp



KOBELCO