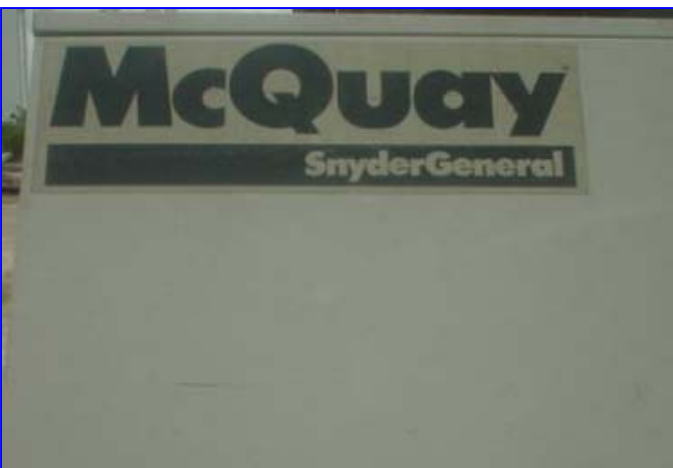
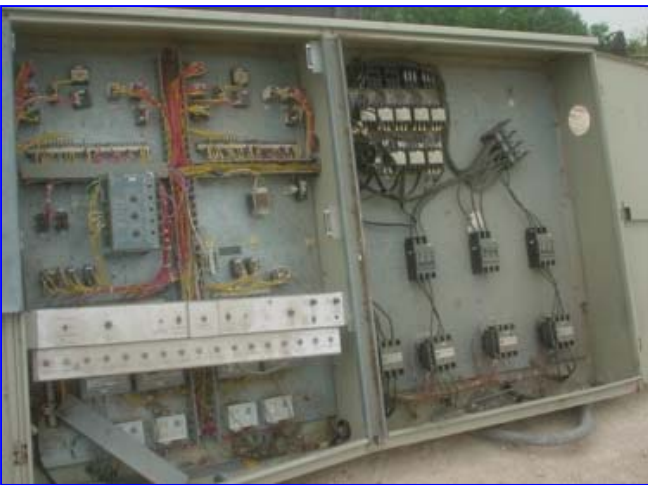


McQuay Snyder, General Electrical Panel for Air Cooled Water Chiller, Model ALR105C-X, S/N 5YG8182501. Unit operates on 460 volt, 3 phase, 60 Hz power. Capacity for 4 compressors (2-25Hp, 2-35 Hp), 8 fans (1Hp ea) all at 460 volt, 3 phase, 60 Hz, 2 additional fans (1Hp ea) @ 230 volt, 60 Hz single phase. Dimensions are 84 in. L x 53 in. H x 11in. W with 2 doors.





Brand: Schneider
Model: 1000B1000

DESCRIPTION	REF.	QUANTITY	UNIT	LOCATION	REMARKS	DATE	INITIALS
POWER SUPPLY							
CONTROL							
CONTROL UNIT							
CONTROL UNIT							
CONTROL UNIT							

WARRANTY INFORMATION
ALL ELECTRICAL COMPONENTS ARE GUARANTEED FOR 3 YEARS
UNLESS OTHERWISE SPECIFIED IN THE TECHNICAL SPECIFICATIONS
FOR THE EQUIPMENT
THE WARRANTY DOES NOT COVER DAMAGE CAUSED BY:
- MISUSE
- ACCIDENTS
- UNAUTHORIZED REPAIRS
- NATURAL DISASTERS
- IMPROPER INSTALLATION
- INCORRECT CONFIGURATION

