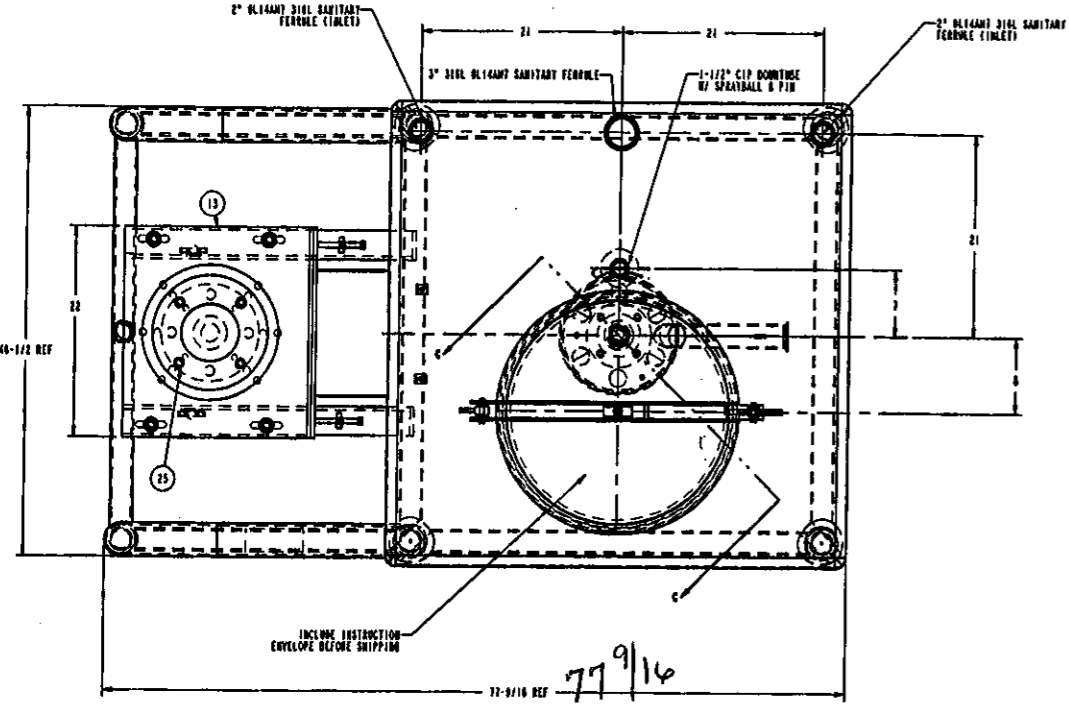
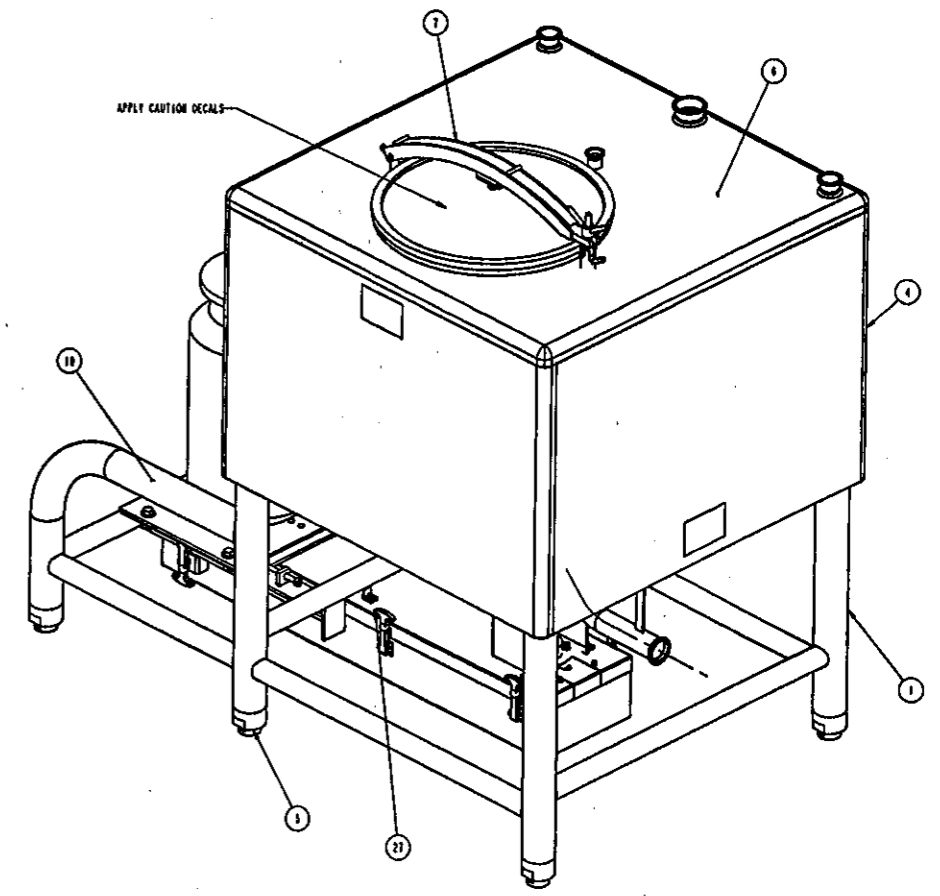
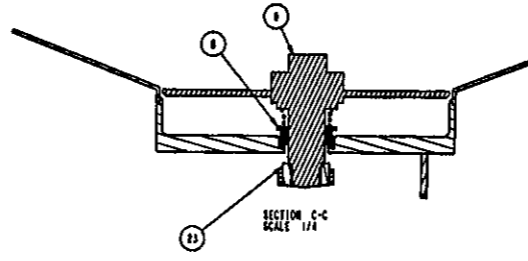
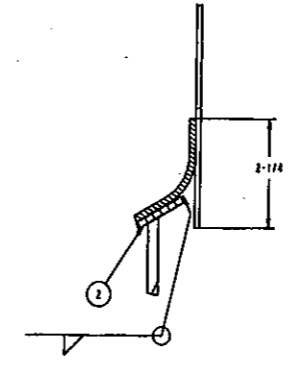
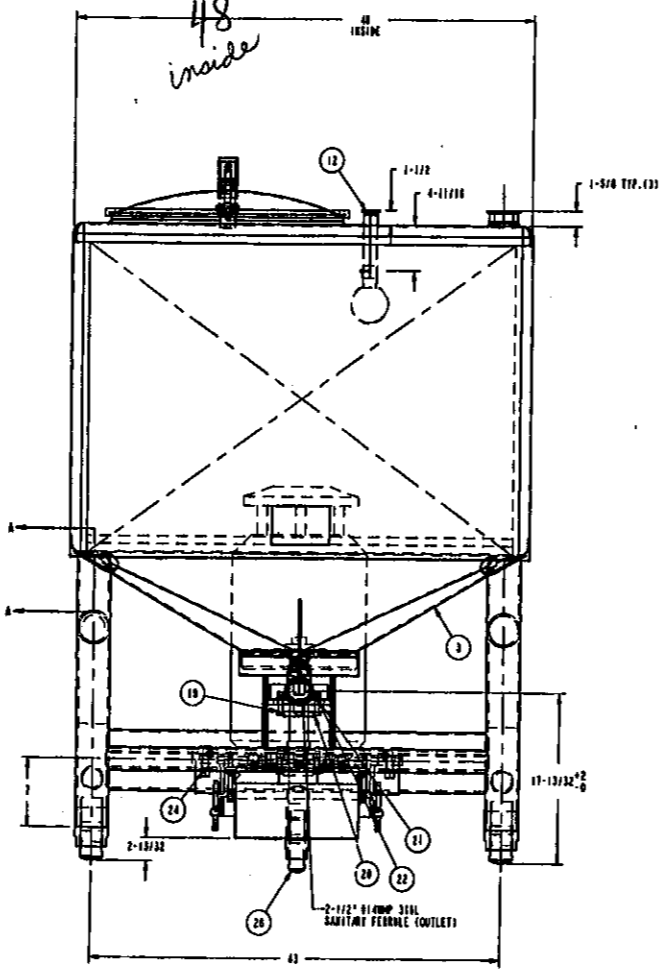
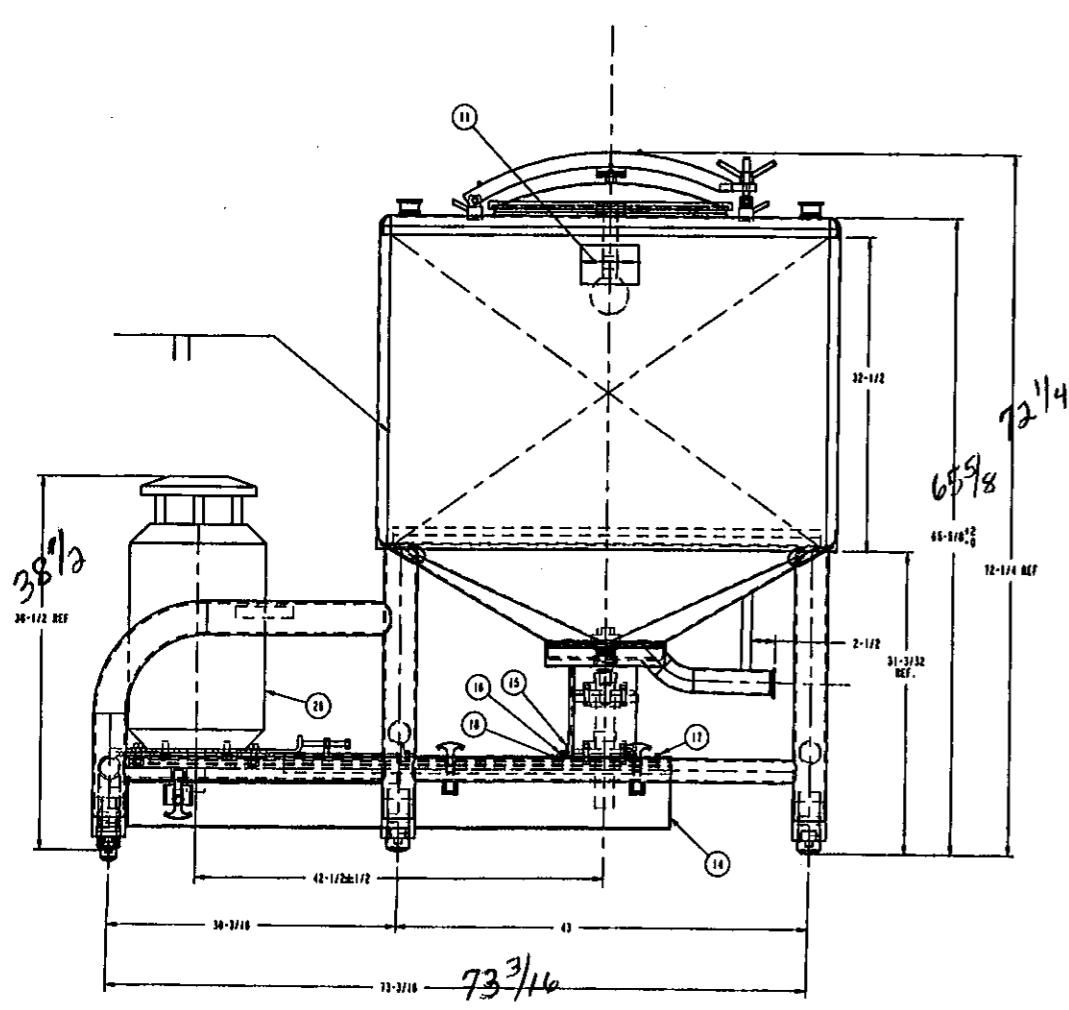


NOTES:
 ALL PRODUCT CONTACT SURFACES AND EXTERIOR EXPOSED SURFACES TO BE #4 FINISH AND TIG WELDED, EXCEPT EXTERIOR BOTTOM CONE AND LEGS TO BE #2 GLASS BEAD FINISH AND MIG WELDED. ALL INTERIOR AND EXTERIOR WELDS TO BE RIBBON POLISHED #7F EXCEPT FOR BOTTOM CONE AND LEGS WHICH WILL BE A #2B GLASS BEAD FINISH

MATERIAL - 316L S/S
 ESTIMATED EMPTY WEIGHT--1800
 MOTOR HP --60
 IMPELLER RPM --1800



DRIVE COMPONENTS NOT SHOWN
 DR SHEAVE 7.0X50-SF
 DN SHEAVE 7.0X50-SF
 BELTS 5 ea. BX105
 DR BUSHING SF#2 3/8
 DN BUSHING SF#1 15/16



BREDDO *Likwifier*
 800-669-4082

FINAL

UNIT SERIAL NO. D-187157-1 03101

APPROVAL FOR CONSTRUCTION

BY _____ DATE _____
 COMPANY _____

28	1	5442930	2" LEG SCREW ASST
27	2	P000228	RUBBER LATCH
26	1	MOTOR-	60 HP 1800 RPM; 364 TCV INVERTER DUTY
25	4	FA70309	HEX HD CS 5/8-11 X 1 1/2" SS
24	4	FA71075	LOCK WASHER SS 5/8"
23	1	SHAFT	IMPELLER DRIVE SHAFT
22	8	FA70713	NUT HEX 7/16-14 SS
21	8	FA71069	LOCK WASHER SS 7/16"
20	8	FA70160	HEX HD CS 7/16-14 X 1 3/4" SS
19	2	BEARING	BEARING
18	5	FA70710	NUT HEX 1/4-20 SS
17	5	FA70003	HEX HD CS 1/4-20 X 3/4" SS
16	5	FA71083	LOCK WASHER SS 1/4"
15	5	5442166	CLIP ANGLE
14	1	5442222-17	HEAVY DUTY BELT GUARD
13	1	5442283-102	HEAVY DUTY MOTOR MOUNT ASSEMBLY
12	1	54422742	1-1/2" CIP DOWNTUBE WELDMENT W/ SPRAYBALL & PIN
11	3	DECAL	CAUTION DECAL
10	1	NAME PLATE	NAME PLATE
9	1	12-IMPELLER	12" IMPELLER
8	1	SEAL	SEAL ASSEMBLY
7	1	5442860	24" NUTWAY ASSEMBLY
6	1	59594120-1	300/400 316L TOP HEAD WELDMENT
5	6	5442931	3" LEG SCREW ASSEMBLY
4	2	56003028	LDT/ LOS 300 GAL SIDE WALL 316L 12 GA. 84/2 S/S
3	1	54422120	316L TRANSITION WELDMENT
2	4	5442988	LEG REINFORCEMENT PAD
1	1	54421103	LOS 300/400 LEG ASSY

PROPRIETARY NOTICE
 This drawing is property of BREDDO-LIKWIFIER and shall not be reproduced, copied, lent, or disposed of nor used for any other purpose than for which it is specifically furnished and must be returned upon demand.

LOS 300 GALLON 316L
 LIKWIFIER ASSEMBLY DRAWING

TOLERANCES UNLESS OTHERWISE SPECIFIED	DRAWN BY CURTIS H
0.0 = ±0.1	DATE 4/17/03
0.00 = ±0.01	APPROVED
0.000 = ±0.001	DATE
± = ±0.5	

SCALE 1/10

PROJECT B	DRAWING NO. 5959001	REV. A
REV. CHANGE	DATE	

A	ADDED 3" FERRULE ; UPDATED MOTOR INFO	EN	3/7/03
REV	CHANGE	DRN	DATE