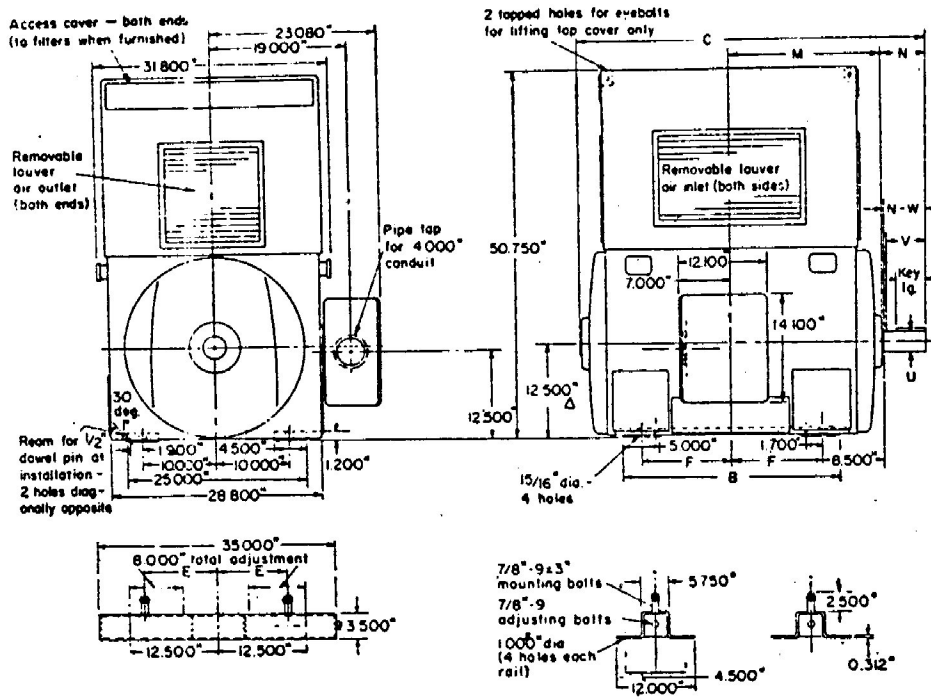


DIMENSIONS



| Part No. | Frame Size | Dimensions in Inches | | | | | | | | | | |
|--|------------|----------------------|--------|------------|--------------|--------|-----------------|-------|----------|------|--------|------|
| | | KEYWAY | | | SHAFT ϕ | | | | MOUNTING | B | C | M |
| | | Wide | Deep | Key Length | N | N-W | U +0.000 -0.001 | V† | F | | | |
| 1800 RPM AND SLOWER, SLEEVE <input type="checkbox"/> OR ANTIFRICTION BEARINGS | | | | | | | | | | | | |
| 001 | 8188S | 0.750 | 0.375 | 4.00 | 6.050 | 5.750 | 2.875 | 5.500 | 12.5 | 30.0 | 47.450 | 20.7 |
| 002 | 8188 | .875 | .4375 | 8.00 | 10.425 | 10.125 | 3.375 | 9.875 | 12.5 | 30.0 | 51.825 | 20.7 |
| 003 | 8110S | .750 | .375 | 4.00 | 6.050 | 5.750 | 2.875 | 5.500 | 16.0 | 37.0 | 54.450 | 24.2 |
| 004 | 8110 | .875 | .4375 | 8.00 | 10.425 | 10.125 | 3.375 | 9.875 | 16.0 | 37.0 | 58.825 | 24.2 |
| 3000 AND 3600 RPM, SLEEVE BEARINGS ONLY <input type="checkbox"/> | | | | | | | | | | | | |
| 005 | 8188S | 0.625 | 0.3125 | 3.00 | 5.050 | 4.750 | 2.375 | 4.500 | 12.5 | 30.0 | 46.450 | 20.7 |
| 006 | 8110S | .625 | .3125 | 3.00 | 5.050 | 4.750 | 2.375 | 4.500 | 16.0 | 37.0 | 53.450 | 24.2 |

† "V" dimension represents the length of straight part of shaft.
 Δ Shaft height dimension will not be exceeded. When exact dimension is required, liners up to 0.000 of an inch may be necessary.
 Two-pole (3000- and 3600-rpm) motors are supplied with 0.500-inch end play for use with limited-end-float couplings. All other motors are supplied with 0.250-inch end play.
 ϕ If a coupling is mounted at the factory, the face of a flange coupling or the hub of a flexible coupling will be flush with the end of the shaft, unless otherwise specified on the order.

The suffix letter "S" indicates the standard short shaft for direct connection only.

Conduit box may be turned so that entrance can be made upward, downward, or from either side. Conduit box is split diagonally.

Rails furnished only when specifically ordered.

Tolerances for dimensions other than shaft available on request.

FOR ESTIMATING ONLY unless endorsed for construction.