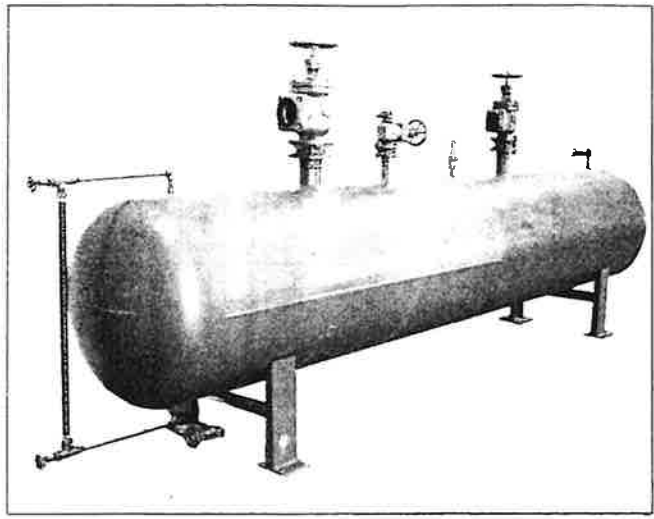


Reco Receiver N/B #1778 250 PSI  
 (1974) Ser. #WB08.11.1  
 30" X 12' 3" Return - 1/4" LQ. - 1/2" Equalizer  
 3/4" Relief Reduced to 1/2" Heavy Manifold (Rusty)  
 1/2" Drain - Site Glass

# ○ RECO RECEIVERS – AMMONIA

## DESCRIPTION

RECO Ammonia Receivers are available throughout a capacity range of 2.9 to 212.2 cubic feet (See Table 1). Receivers can be supplied complete with shell assembly, and with an accessory package consisting of: AFS single safety, inlet, outlet, charging, purge, and drain valves; liquid level sight glass gauge, receiver stand, and all fittings (including flanges) necessary to completely assemble the receiver. To facilitate handling and avoid shipping damage, all external fittings are shipped separately.



RECO Ammonia Receiver

TABLE 1 — CAPACITY DATA

Receiver Size		*Tons Refrig.	Capacity Cubic Ft.	Receiver Size		*Tons Refrig.	Capacity Cubic Ft.
Dia.	Length			Dia.	Length		
12"	4'	3	2.9	24"	12'	140	34.7
12"	6'	5	4.5	24"	14'	200	40.4
12"	8'	6	6.1	24"	16'	220	46.3
16"	7'	14	8.7	24"	18'	230	52.2
16"	10'	21	12.5	30"	12'	240	53.9
16"	15'	40	18.5	30"	14'	250	53.1
16"	18'	55	22.4	30"	16'	270	72.3
20"	7'	24	13.8	30"	18'	280	31.5
20"	10'	45	19.9	36"	14'	300	93.5
20"	12'	60	23.9	36"	16'	320	105.9
20"	14'	80	28.1	36"	18'	340	120.2
20"	16'	105	32.1	42"	16'	375	145.0
20"	18'	140	36.2	42"	18'	500	163.0
				48"	16'	680	188.6
				48"	18'	740	212.2

\*Capacity ratings based upon operation at standard ASHRAE conditions

NOTE: Special sizes and connections available on request.

## MECHANICAL SPECIFICATIONS

**ASME CODE** — RECO vessels are designed, constructed, tested and stamped in accordance with Section 8 of the ASME Code for unfired pressure vessels. Vessels are inspected by National Board Commissioned Inspectors and stamped with National Board Registration Numbers.

**DESIGN PRESSURE** — 250 psig.

**TEST PRESSURE** — 375 psig.

**FINISH** — After being carefully cleaned, tested and dried, connections are plugged and the receiver is sand-blasted and painted with rust preventive paint.

B&G FOODS HYDRO-COOLER SYSTEM RECEIVER

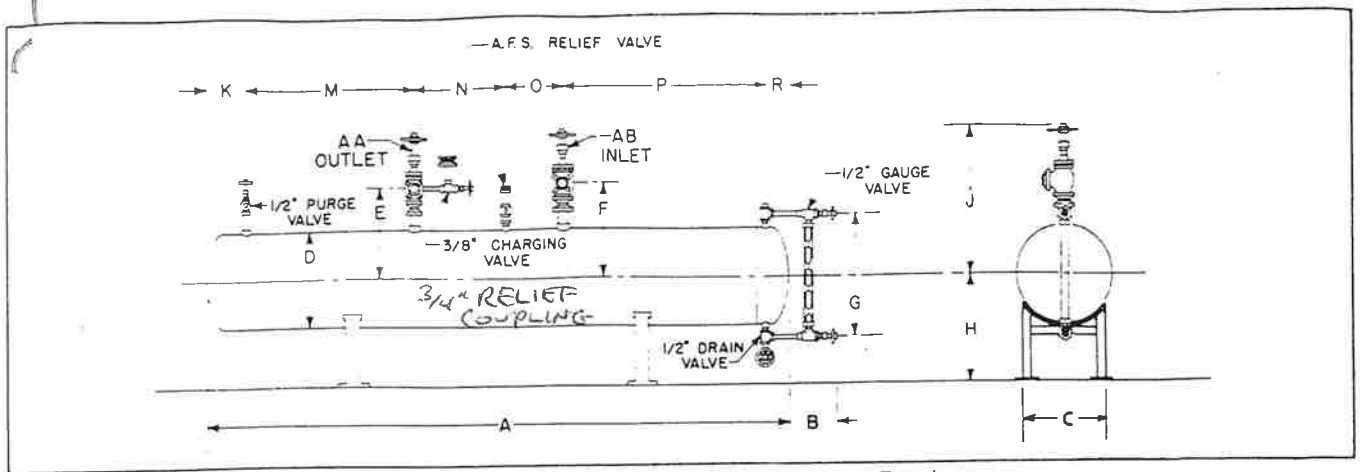


Fig. 1 - Dimensional Outline RECO Ammonia Receiver

TABLE 2 - NOMINAL DIMENSIONS

MODEL NUMBER	RECEIVER SIZE		OUTLET		INLET		NOMINAL DIMENSIONS IN INCHES													
	Di.	Length	AA	AB	A	B	C	(O.D.) D	E	F	G	H	J	K	M	N	O	P	R	
0021204MV 0021206MV 0021208MV	12"	4" 5" 8"	1/2" <sup>2</sup> 1/2" <sup>2</sup> 1/2" <sup>2</sup>	1/2" <sup>2</sup> 1/2" <sup>2</sup> 1/2" <sup>2</sup>	48 72 96	10 10 10	12 12 12	12 3/4 12 3/4 12 3/4	11 11 11	11 11 11	17 1/2 17 1/2 17 1/2	18 3/8 18 3/8 18 3/8	16 1/2 16 16	9 5 3/4 5 3/4	9 15 1/4 27 1/4	9 18 18	12 12 12	5 3/4 18 3/4 30 3/4	2 1/4 2 1/4 2 1/4	
0021607MV 0021610MV 0021615MV 0021618MV	16"	7" 10" 15" 18"	1/2" <sup>2</sup> 3/4" <sup>2</sup> 3/4" <sup>2</sup> 3/4" <sup>2</sup>	3/4" <sup>3</sup> 1" <sup>3</sup> 1 1/2" <sup>1</sup> 1 1/2" <sup>1</sup>	84 120 180 216	10 9 16 9	16 16 16 16	16 16 16 16	12 5/8 13 13 13	13 17 1/4 17 1/4 17 1/4	20 3/4 20 3/4 20 3/4 20 3/4	20 1/2 20 1/2 20 1/2 20 1/2	18 1/4 21 19 1/2 19 1/2	6 1/2 6 1/4 6 3/4 6 3/4	20 1/2 38 1/2 70 1/4 82 1/4	18 18 18 18	12 12 12 12	24 42 70 94	3 3 3 3	
0022007MV 0022010MV 0022012MV 0022014MV 0022015MV 0022018MV	20"	7" 10" 12" 14" 16" 18"	3/4" <sup>2</sup> 3/4" <sup>2</sup> 3/4" <sup>2</sup> 1" <sup>1</sup> 1" <sup>1</sup> 1 1/4" <sup>1</sup>	1" <sup>3</sup> 1 1/2" <sup>3</sup> 2" <sup>2</sup> 2" <sup>2</sup> 2" <sup>2</sup> 2" <sup>2</sup>	84 120 144 168 192 216	9 9 9 9 9 9	20 20 20 20 20 20	20 20 20 20 20 20	16 15 16 18 1/4 18 1/4 18 3/4	16 17 1/4 19 3/4 19 1/4 19 1/4 19 1/4	24 3/4 24 3/4 24 3/4 24 3/4 24 3/4 24 3/4	22 22 22 22 22 22	22 5/16 31 3/8 31 1/2 31 1/2 31 1/2 31 1/2	8 8 8 8 8 8	18 3/4 37 49 61 73 85	18 18 18 18 18 18	12 12 12 12 12 12	22 3/4 40 1/2 52 1/2 64 1/2 76 1/2 88 1/2	4 1/2 4 1/2 4 1/2 4 1/2 4 1/2 4 1/2	
0022412MV 0022414MV 0022416MV 0022418MV	24"	12" 14" 16" 18"	1 1/4" <sup>1</sup> 1 1/4" <sup>1</sup> 1 1/4" <sup>1</sup> 1 1/4" <sup>1</sup>	2 1/2" <sup>2</sup> 2 1/2" <sup>2</sup> 3" <sup>3</sup> 3" <sup>3</sup>	144 168 192 216	9 9 9 9	22 22 22 22	24 24 24 24	20 3/4 20 3/4 20 3/4 20 3/4	23 3/4 23 3/4 22 3/4 22 3/4	28 3/4 28 3/4 28 3/4 28 3/4	24 1/2 24 1/2 24 1/2 24 1/2	38 5/8 38 5/8 37 5/16 37 5/16	8 8 8 8	49 1/2 60 1/4 74 87 1/4	18 18 18 18	12 12 12 12	52 65 1/4 75 1/2 86 1/4	4 1/2 4 1/2 4 1/2 4 1/2	
0023012MV 0023014MV 0023015MV 0023018MV	30"	12" 14" 16" 18"	1 1/4" <sup>1</sup> 1 1/2" <sup>1</sup> 1 1/2" <sup>1</sup> 1 1/2" <sup>1</sup>	3" <sup>3</sup> 3" <sup>3</sup> 3" <sup>3</sup> 3" <sup>3</sup>	144 168 192 216	9 9 9 9	24 24 24 24	30 30 30 30	23 3/4 24 1/4 24 1/4 24 1/4	26 3/4 26 3/4 26 3/4 26 3/4	34 3/4 34 3/4 34 3/4 34 3/4	27 3/4 27 3/4 27 3/4 27 3/4	41 3/8 41 3/8 41 3/8 41 3/8	10 10 10 10	38 50 62 74	24 24 24 24	24 24 24 24	42 54 66 78	6 6 6 6	
0023614MV 0023616MV 0023618MV	36"	14" 16" 18"	1 1/2" <sup>1</sup> 1 1/2" <sup>1</sup> 1 1/2" <sup>1</sup>	3" <sup>3</sup> 3" <sup>3</sup> 3" <sup>3</sup>	168 192 216	9 9 9	30 30 30	35 36 36	27 3/8 27 3/8 27 3/8	30 1/8 30 1/8 30 1/8	40 3/4 40 3/4 40 3/4	31 5/8 31 5/8 31 5/8	44 3/4 44 3/4 44 3/4	10 10 10	50 62 74	24 24 24	24 24 24	56 66 76	6 6 6	
0024216MV 0024218MV	42"	16" 18"	1 1/2" <sup>1</sup> 2" <sup>1</sup>	3" <sup>3</sup> 4" <sup>3</sup>	192 216	9 10	36 36	42 42	30 1/4 30 1/4	32 3/4 35 3/4	46 3/4 46 3/4	34 5/8 34 5/8	47 1/2 52 7/8	13 3/4 13 3/4	58 1/8 70 1/8	24 24	24 24	62 3/8 74 3/8	9 3/4 9 3/4	
0024816MV 0024818MV	48"	16" 18"	2" <sup>1</sup> 2" <sup>1</sup>	4" <sup>3</sup> 4" <sup>3</sup>	192 216	10 10	42 42	48 48	33 1/4 33 1/4	38 38	52 3/4 52 3/4	37 5/8 37 5/8	55 1/8 55 1/8	15 1/2 15 1/2	56 1/2 68 1/2	24 24	24 24	60 1/2 72 1/2	11 1/2 11 1/2	

Notes: <sup>1</sup> Flanged Angle Valve; <sup>2</sup> Threaded Tee Valve; <sup>3</sup> Threaded Angle Valve

Dimensions Given For Estimation Only