

Waukesha 15 Positive Displacement Pump

Mfg: Waukesha

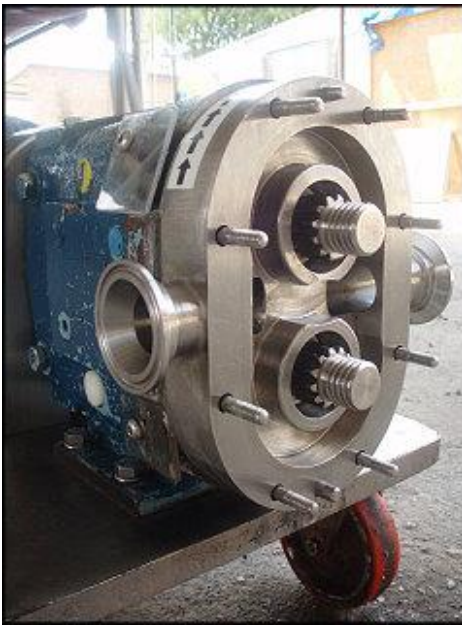
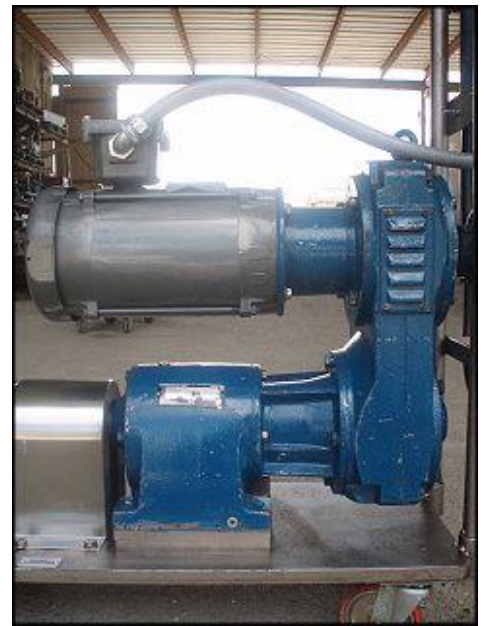
Model: 15

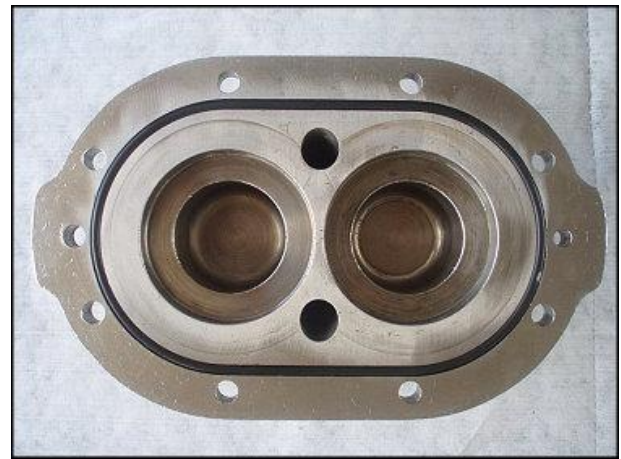
Stock No: DBBP185425.10

Serial No: 83155 SS

Waukesha Positive Displacement Pump. Model: 15. S/N: 83155 SS. Flow rate for new pump is 9 gpm with required horsepower and pressure. Discuss with salesperson your process and product to determine if this refurbished pump should handle your specific duty. (2) 3-1/4 in. rotors. Allen Bradley start/stop switch catalog no.609-AEW, Size 0, type 7&9, Series H, 200 VAC volts on 3 phase, 230 VAC volts on 3 phase, 460/575 VAC volts on 5 phase. SEW Eurodrive Inc., type R60VU2LP, 11.5 ratio. Baldor Electric motor 1.5 Hp, 1725 / 1450, rpm, 208-230/460/ 190/380 volts, 5.3-5/2.5 / 4.4/2.2 amps, 60 Hz, 3 phase. (1) 1-1/2 in. s-line inlet. (1) 1-1/2 in. s-line outlet. Overall dimensions: 3 ft. 7-1/2 in. L. x 1 ft. 1/4 in. W. x 3 ft. 10-1/2 in.(ACN62).







CATALOG NO. 609-AEW

SIZE 0 TYPE 7&9

FOR USE IN HAZARDOUS LOCATIONS N.E.C.

CLASS	I	II
GROUP	C-D	E-F-G
MAXIMUM HP RATINGS - 3 PHASE		
200VAC	3	
230VAC	3	
460/575VAC	5	

ALLEN-BRADLEY

UL LISTED IND. CONT. EQ. FOR HAZ. LOC. A196

UL LISTED CLASS I, GROUP D CLASS II, GROUP F & G CLASS I, ZONE I, GROUP II

ELECTRIC MOTORS FOR HAZARDOUS LOCATIONS BALDOR ELECTRIC CO. FORT SMITH, ARK. U.S.A.

NO. S 1115 110

SER. # F0311102105

SPEC 35E374.0010

CAT. NO. 117036

H.P. 1 1/2

VOLTS 208-230/460/575/3PH

AMPS 5.3-5.7/2.5/1.4/1.0

R.P.M. 1725/1455

HZ 60/50

SER. F. 1.00

RATING 400 AFB-Q001

FRAME 56C

CC

OPERATING TEMPERATURE CODE T3C

Waukesha Pumps AMCA International

SERIAL NO. 83155 SS SIZE 15

READ AND UNDERSTAND OPERATION AND MAINTENANCE MANUAL BEFORE OPERATION.

Waukesha WI, U.S.A.

EURODRIVE INC. USA

Type R60VU2LP

S.O. 850027092.4.01.85.001

Input rpm Output rpm

hp Torque lb.in.

Ratio 11.5 Service Class I Mtg. Pos. B3

Ambient Temp. +15° +110°F

Parallel/Helical Bevel Lube SAE 90

Combination Gear Lube SAE 140