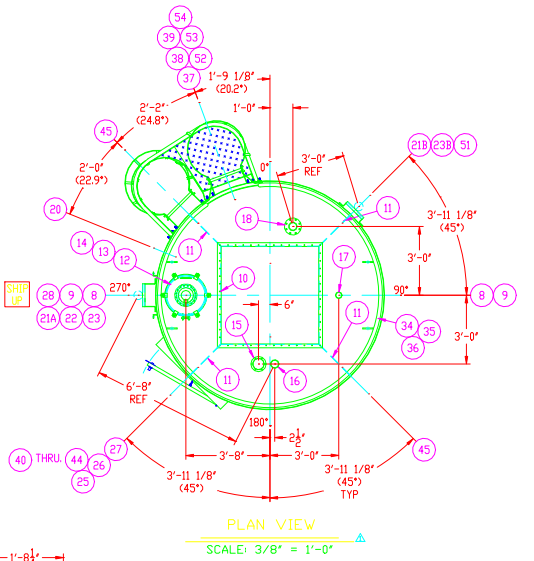
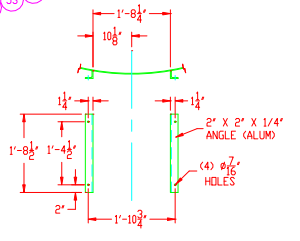


ELEVATION VIEW
SCALE: 3/8" = 1'-0"
NOTE: 1. FOR TRUE ORIENTATION SEE PLAN VIEW.

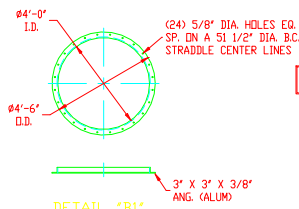
FOR LASSER STUD LOCATION SEE DRAWING NO. 192-001 & 192-003/7



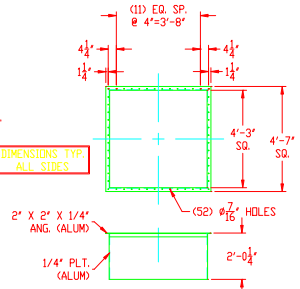
PLAN VIEW
SCALE: 3/8" = 1'-0"



DETAIL "C1" TRUCK FILL BOX BRACKET
SCALE: 3/4" = 1'-0"



DETAIL "B1" DISCHARGE FLANGE
SCALE: 3/8" = 1'-0"



DETAIL "A1" FILTER FLANGE
SCALE: 3/8" = 1'-0"

REV	NO.	QTY	UM	PART NUMBER	AT	LD	DESCRIPTION	CODE
1	1	40	PC	EA102004	Y		HOOP RING - AL2024 20 X 1/2" 3000-HR CLAS SHEETS	
1	2	186.00	PC	EA102046	Y		HEPPER - SH6190 40 X 1/2" 3000-HR CLAS SHEETS	
1	3	290.67	PC	EA102045	Y		CYLINDER - SH6190 40 X 1/2" 3000-HR CLAS SHEETS	
1	4	3000.00	PC	EA102045	Y		CYLINDER - SH6190 70 X 1/2" 3000-HR CLAS SHEETS	5000
1	5	8.00	PC	EA103005	Y		LIFT LUG SMALL LH CALUM	6001
1	6	100	PC	EA103006	Y		LIFT LUG SMALL RH CALUM	6001
1	7	100	PC	EA103007	Y		LIFT LUG SMALL LH CALUM	6001
1	8	100	PC	EA103008	Y		LIFT LUG SMALL RH CALUM	6001
1	9	100	PC	EA103009	Y		LIFT LUG SMALL LH CALUM	6001
1	10	100	PC	EA103010	Y		LIFT LUG SMALL RH CALUM	6001
1	11	100	PC	EA103011	Y		LIFT LUG SMALL LH CALUM	6001
1	12	100	PC	EA103012	Y		LIFT LUG SMALL RH CALUM	6001
1	13	100	PC	EA103013	Y		LIFT LUG SMALL LH CALUM	6001
1	14	100	PC	EA103014	Y		LIFT LUG SMALL RH CALUM	6001
1	15	100	PC	EA103015	Y		LIFT LUG SMALL LH CALUM	6001
1	16	100	PC	EA103016	Y		LIFT LUG SMALL RH CALUM	6001
1	17	100	PC	EA103017	Y		LIFT LUG SMALL LH CALUM	6001
1	18	100	PC	EA103018	Y		LIFT LUG SMALL RH CALUM	6001
1	19	100	PC	EA103019	Y		LIFT LUG SMALL LH CALUM	6001
1	20	100	PC	EA103020	Y		LIFT LUG SMALL RH CALUM	6001
1	21	100	PC	EA103021	Y		LIFT LUG SMALL LH CALUM	6001
1	22	100	PC	EA103022	Y		LIFT LUG SMALL RH CALUM	6001
1	23	100	PC	EA103023	Y		LIFT LUG SMALL LH CALUM	6001
1	24	100	PC	EA103024	Y		LIFT LUG SMALL RH CALUM	6001
1	25	100	PC	EA103025	Y		LIFT LUG SMALL LH CALUM	6001
1	26	100	PC	EA103026	Y		LIFT LUG SMALL RH CALUM	6001
1	27	100	PC	EA103027	Y		LIFT LUG SMALL LH CALUM	6001
1	28	100	PC	EA103028	Y		LIFT LUG SMALL RH CALUM	6001
1	29	100	PC	EA103029	Y		LIFT LUG SMALL LH CALUM	6001
1	30	100	PC	EA103030	Y		LIFT LUG SMALL RH CALUM	6001
1	31	100	PC	EA103031	Y		LIFT LUG SMALL LH CALUM	6001
1	32	100	PC	EA103032	Y		LIFT LUG SMALL RH CALUM	6001
1	33	100	PC	EA103033	Y		LIFT LUG SMALL LH CALUM	6001
1	34	100	PC	EA103034	Y		LIFT LUG SMALL RH CALUM	6001
1	35	100	PC	EA103035	Y		LIFT LUG SMALL LH CALUM	6001
1	36	100	PC	EA103036	Y		LIFT LUG SMALL RH CALUM	6001
1	37	100	PC	EA103037	Y		LIFT LUG SMALL LH CALUM	6001
1	38	100	PC	EA103038	Y		LIFT LUG SMALL RH CALUM	6001
1	39	100	PC	EA103039	Y		LIFT LUG SMALL LH CALUM	6001
1	40	100	PC	EA103040	Y		LIFT LUG SMALL RH CALUM	6001
1	41	100	PC	EA103041	Y		LIFT LUG SMALL LH CALUM	6001
1	42	100	PC	EA103042	Y		LIFT LUG SMALL RH CALUM	6001
1	43	100	PC	EA103043	Y		LIFT LUG SMALL LH CALUM	6001
1	44	100	PC	EA103044	Y		LIFT LUG SMALL RH CALUM	6001
1	45	100	PC	EA103045	Y		LIFT LUG SMALL LH CALUM	6001
1	46	100	PC	EA103046	Y		LIFT LUG SMALL RH CALUM	6001
1	47	100	PC	EA103047	Y		LIFT LUG SMALL LH CALUM	6001
1	48	100	PC	EA103048	Y		LIFT LUG SMALL RH CALUM	6001
1	49	100	PC	EA103049	Y		LIFT LUG SMALL LH CALUM	6001
1	50	100	PC	EA103050	Y		LIFT LUG SMALL RH CALUM	6001
1	51	100	PC	EA103051	Y		LIFT LUG SMALL LH CALUM	6001
1	52	100	PC	EA103052	Y		LIFT LUG SMALL RH CALUM	6001
1	53	100	PC	EA103053	Y		LIFT LUG SMALL LH CALUM	6001
1	54	100	PC	EA103054	Y		LIFT LUG SMALL RH CALUM	6001

INTERIOR NOTES:
GRINDING CLASS #1:
WELD SPATTER AND SLAG IS REMOVED USING A WIRE BRUSH. EXCESSIVE WELD CROWN AT STARTS AND STEPS IS REMOVED.

EXTERIOR NOTES:
GRINDING CLASS #1:
WELD SPATTER AND SLAG IS REMOVED USING A WIRE BRUSH. EXCESSIVE WELD CROWN AT STARTS AND STEPS IS REMOVED.

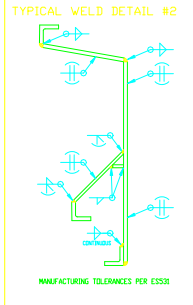
CLEANING/BLASTING CLASS #6:
POWER WASH USING A SPRAY WASHER AND CLEANING SOLUTION.
REMOVE ALL VISUAL CHEMICAL "FOUL-SOL" AND CHEMICAL CONTAMINATION.

CLEANING/BLASTING CLASS #4:
POWER WASH USING A SPRAY WASHER AND CLEANING SOLUTION.
REMOVE ALL VISUAL BRIGHT, WELD SMOKE, AND CHEMICAL CONTAMINATION.

INSPECTION CLASS #1:
VISUAL (100%) TEST PROCEDURE PER IMP #111.

INSPECTION CLASS #1:
VISUAL (100%) TEST PROCEDURE PER IMP #111.

CERTIFIED PRINT
IMPERIAL INDUSTRIES INC.
AUTHORIZED BY: Russell Critnam
DATE: 10-03-12



DESIGN NOTES:	FOUNDATION LOADS:
SEISMIC ZONE: 4	VERTICAL MOMENT: 162,000 FT-LBS
MAX WIND LOAD: 25 MPH (EXP. D)	HORIZONTAL SHEAR: 7,200 LBS
MAX DECK LIVE LOAD: 25 PSF (P)	MAX LOAD PER LINEAR IN. OF BASE: 250 LBS
MAX MATERIAL DENSITY: 0.283 PCF	MAX LOAD PER ANCHOR BOLT: 8,000 LBS
MAX INTERNAL VACUUM: 0.03 PSI	RECOMMENDED BOLT DIA: 3/4"
MAX EXTERNAL PRESSURE: 0.03 PSI	
CAPACITY: 1,600 CUBIC FOOT	
SHIPPING WEIGHT: 4,500 LBS	
TEMPERATURE: 15	

TANK GAUGE SCHEDULE	CUTTING SCHEDULE
TOP DECK (11')	50S-H32 L. RAD. 5'-0.75"
BOTTOM CONE (60')	50S-H32 L. RAD. 5'-0.75"
1st CYL. 60' DF	50S-H32 CIRC.
2nd CYL. 60' DF	50S-H32 CIRC.
3rd CYL. 60' DF	50S-H32 CIRC.
4th CYL. 60' DF	50S-H32 CIRC.
5th CYL. 60' DF	50S-H32 CIRC.
6th CYL. 72' DF	50S-H32 CIRC.
7th CYL. 31.24' DF	50S-H32 CIRC.

INSTALLATION/CONTRACTOR NOTES:
1. RANGE TO EXTERIOR PROTECTIVE COATING.
2. ANY EXPOSURE DURING INSTALLATION.
3. INDUSTRIES INC. SUPPLIES TOOTH-PAIN TO REPAIR THE FIN. COAT. SURFACE PREPARATION AND APPLICATION IS THE RESPONSIBILITY OF THE INSTALLATION CONTRACTOR.
4. ITEMS MARKED IN THE BILL OF MATERIALS "UP" SHALL INDICATE THAT THESE ITEMS ARE SHIPPED LOOSE. ATTACHMENT TO THE TANK IS THE RESPONSIBILITY OF THE INSTALLATION CONTRACTOR.
5. BACK CHANGES FOR REVISIONS OR CORRECTIONS WILL NOT BE ACCEPTED WITHOUT PRIOR AUTHORIZATION FROM THE MANUFACTURER.

REV	DATE	DESCRIPTION
7		
6		
5		
4		
3		
2	10-11-02	REVISED HOPPER
1	10-07-02	PER CUSTOMER REQ/IMPERIAL DESIGN CHECK
REV	BY	DATE

IMPERIAL INDUSTRIES INC. 133060-1
TANK ASSEMBLY DRAWING
VAN MERKEL INC./AUSTIN, TX