

## Cleaver Brooks CB Packaged Steam Boiler - 175 HP

**Mfg: Cleaver Brooks**

**Model: CB-400-175S**

**Stock No: pDFAO001**

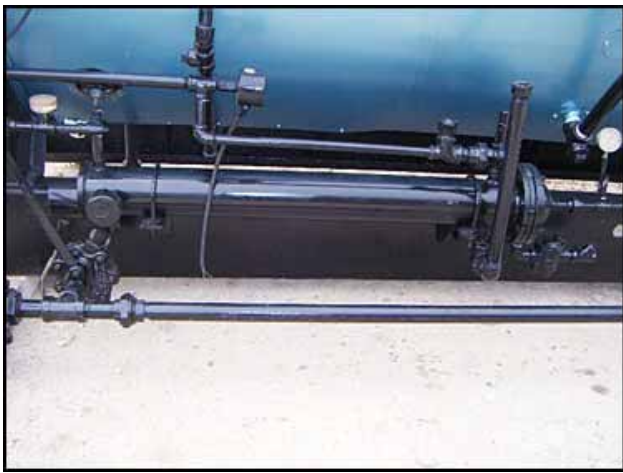
**Serial No: L-61659**

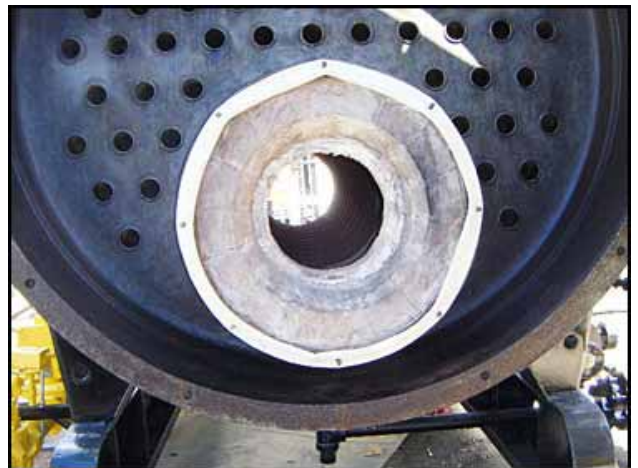
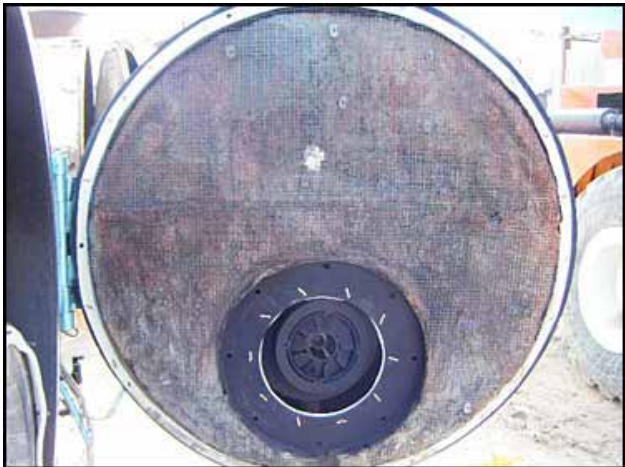
Cleaver Brooks CB Packaged Steam Boiler. Model: CB-400-175S. S/N: L-61659. Approximate capacity: 175 HP with steam output of 6000 lbs. / hr. Input: 7323000 Btu/hr. MAWP: 150 psi. Natural gas burner with standard 4:1 turndown. Electrical requirements: 230 V, 43 amps, 60 Hz, 3 phase. Electrical control requirements: 120 V, 7 amps, 60 Hz, 3 phase. Boiler is equipped with a 4 ft. L x 5 in. dia. condenser tube. Sorgel single phase insulated transformer, 5 KVA, high voltage: 240/480, low voltage: 120/240. (2) ASCO Hydra motor gas valves, 120 V, 1.85 amps (running), 1 amp (holding), 60 Hz, opening time: 6-14 sec, max. closing time: 1 sec. Entry into boiler is accessible through a 15 in. L x 11-1/2 in. W oval manway. Inlets: (1) 2-1/2 in. dia. pipe, (1) 3 in. dia. pipe for natural gas, (1) 4 in. dia. pipe, (1) 16 in. dia. with an 18-1/2 in. dia. flange and (12) 1/2 in. dia. attachment holes at a center-to-center distance of 18 in. Outlets: (1) 3/4 in. dia. pipe for condensate water, (1) 2 in. dia. pipe for blow down water. Overall dimensions: 18 ft. L x 6 ft. W x 8 ft. H.

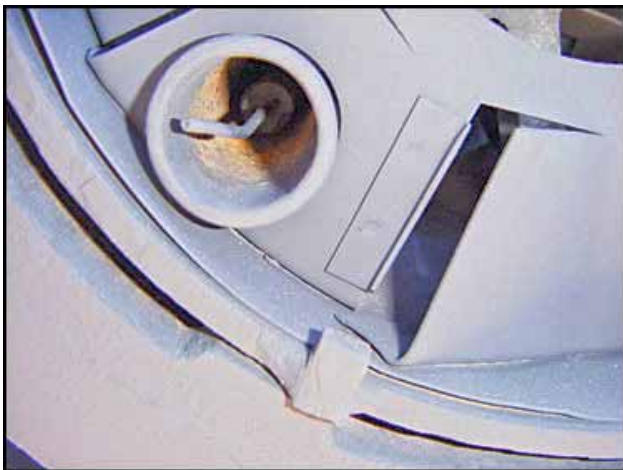
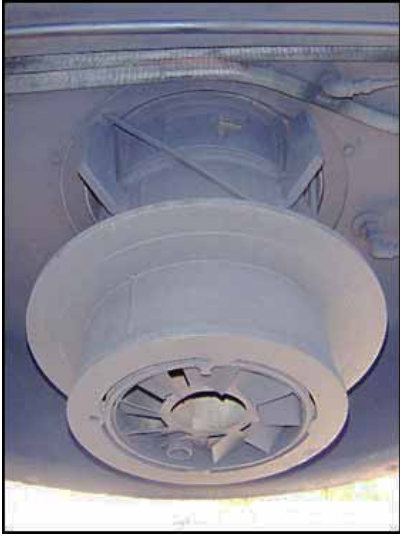














**Cleaver-Brooks**  
**CB PACKAGED BOILER**

MODEL  SERIAL NO.

MAX. PRESSURE  PSI DATE

INPUT  BTU/HR  GAS  GPH OIL

**ELECTRICAL REQUIREMENTS**

**MAIN POWER SUPPLY**

VOLTS  PH  HZ  AMP

MINIMUM CIRCUIT AMPACITY  AMP.

MAX. RATING OF CIRCUIT PROTECTION  AMP.

BLOWER MOTOR  HP

AIR COMPRESSOR MOTOR  HP

OIL HEATER  KW

**CONTROL CIRCUIT**

120 VOLTS 1 PH 60 HZ 7 AMP.

**OIL PUMP MOTOR**

VOLTS  PH  HZ  AMP

CLEAVER-BROOKS DIVISION  
 AQUA-CHEM, INC.  
 MILWAUKEE, WISCONSIN, U.S.A.

VOLTS  PH  HZ

CLEAVER-BROOKS DIVISION  
 AQUA-CHEM, INC.  
 MILWAUKEE, WISCONSIN, U.S.A.

UNDERWRITERS  
 LABORATORIES  
 LISTED

**GAS-OIL FIRED BOILER ASSEMBLY**

NO.

FOR USE WITH INTEGRAL GROUP  
 (GAS) AND INT. GR.  (OIL)

PRIMARY SAFETY CONTROLS  
 OIL NOT HEAVIER THAN

**Cleaver-Brooks**

THIS APPARATUS IS COVERED BY  
 ONE OR MORE OF THE FOLLOWING  
 U.S. PATENTS:

2711710 2835230 2835320  
 2783354 2818110 2939521  
 2941585 3079981

OTHER PATENTS PENDING

**Cleaver-Brooks**