

2001 Triple Effect Falling Film Evaporator System

Mfg: Honiron

Model:

Stock No. 2000.WY.250

Serial No.:

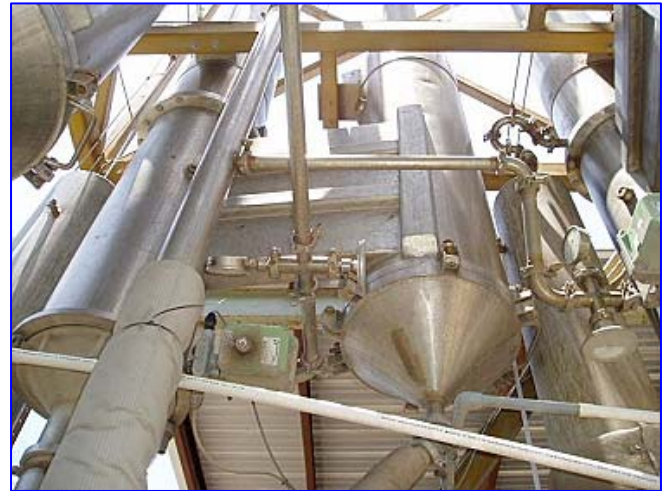
2001 Honiron Triple Effect Falling Film Evaporator. System is designed for a nominal feed capacity of 15-20 gpm. The complete system is mounted on two skids with interconnecting piping and power cables for Evaporator and Feed-Product Tank. The skids are manufactured to fasten together and form a very stable unit able to be installed outside if needed (#1 Evaporator Skid, #2 Feed and Product Tank Skid). The unit was built in the year 2001 by Honiron Corporation in Jennerette, LA. It was built to specification for Inuloa Wyoming's pilot plant project located approximately 15 miles southeast of Lovell, Wyoming, to process a juice extracted from chicory root at 10 brix in and 60 brix out. The three calandrias, preheater, and condenser bodies were purchased used and imported from Ireland. They are all stainless steel and in near new condition. All pumps, piping, and other wetted parts are new and stainless steel. The feed and product tanks are also stainless steel. The system was installed and tested with water under the supervision of Honiron engineers in March 2001.

Full financing for the Inuloa Wyoming project failed to materialize and the company ceased operations prior to start-up in the Spring 2001.

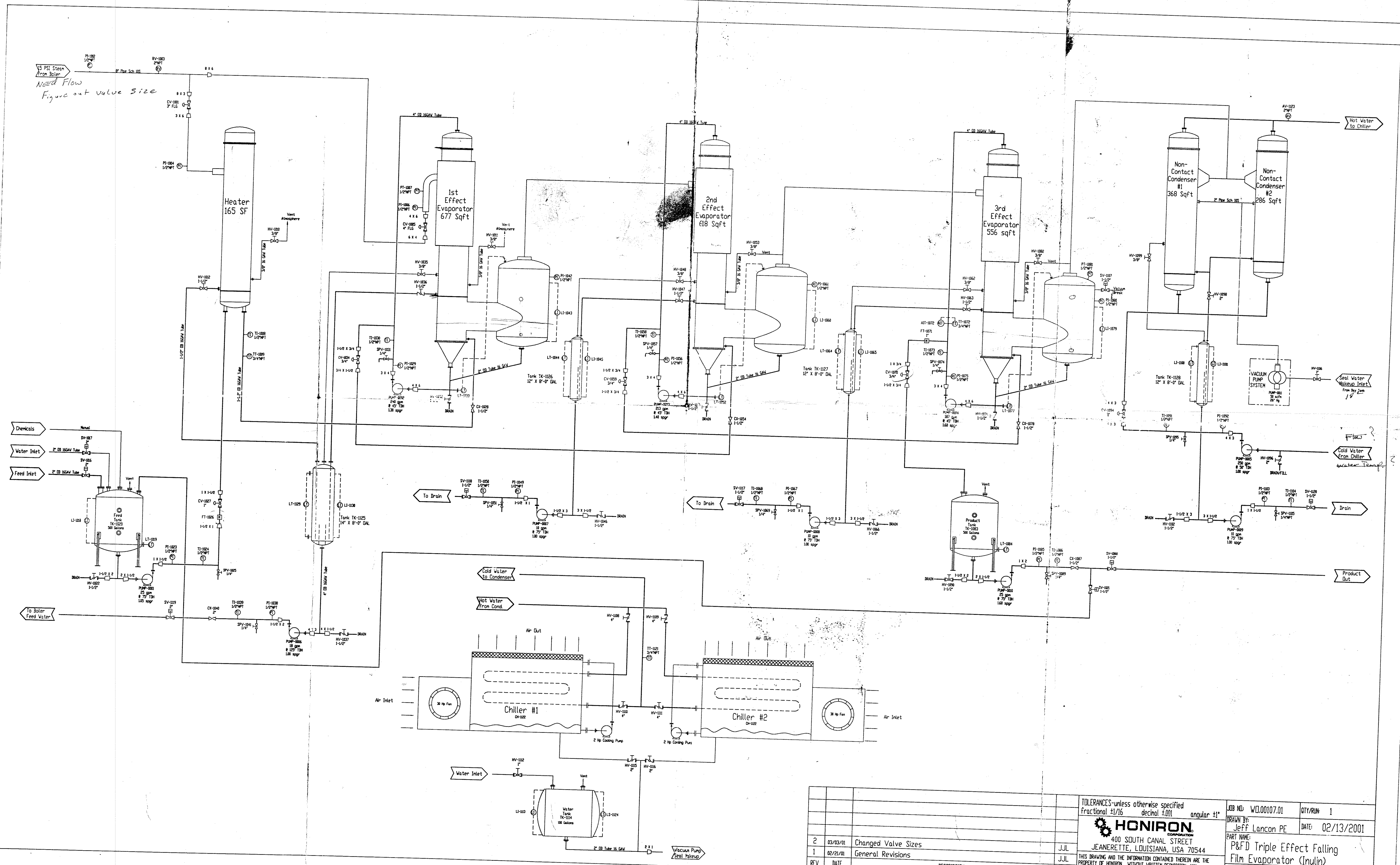
Equipment includes: feed tank with pump, product tank with pump, feed pre-heater, 1st effect evaporator with circulation pump, 2nd effect evaporator with circulation pump, 3rd effect evaporator with circulation pump, steam trap #1 with pump, steam trap #2 with pump, steam trap #3 with pump, vacuum pump, switchgear for 440 VAC, 250 amp service, PLC 14 loops, and touch screen-set points, ranges, passwords.





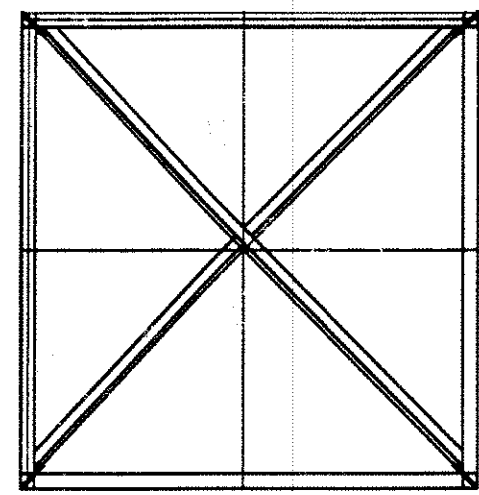




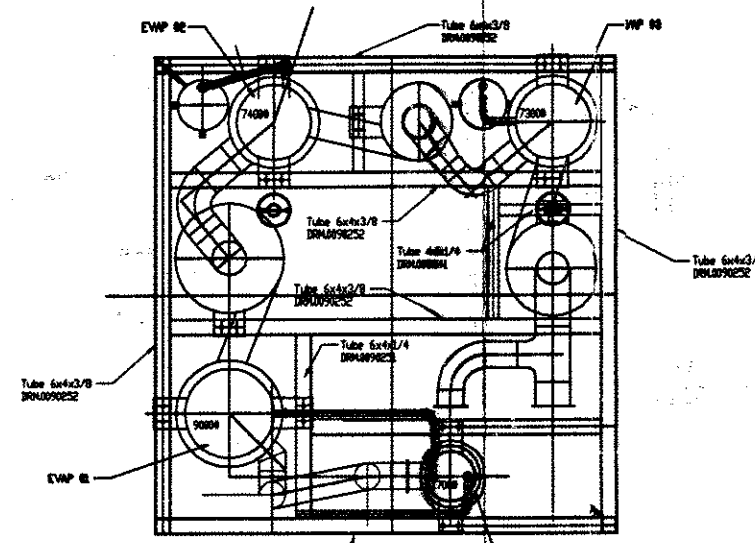


TOLERANCES - unless otherwise specified Fractional 1/16 decimal 0.01 angular 1/2°		JOB NO: WJ.00107.01	QTY/RUN: 1
DRAWN BY: Jeff Lancon PE		DATE: 02/13/2001	
PART NAME: P&FD Triple Effect Falling Film Evaporator (Inulin)		P/N: 900104!	
REV. 2			
REV	DATE	DESCRIPTION	DWG BY
2	03/03/01	Changed Valve Sizes	JJL
1	02/21/01	General Revisions	JJL

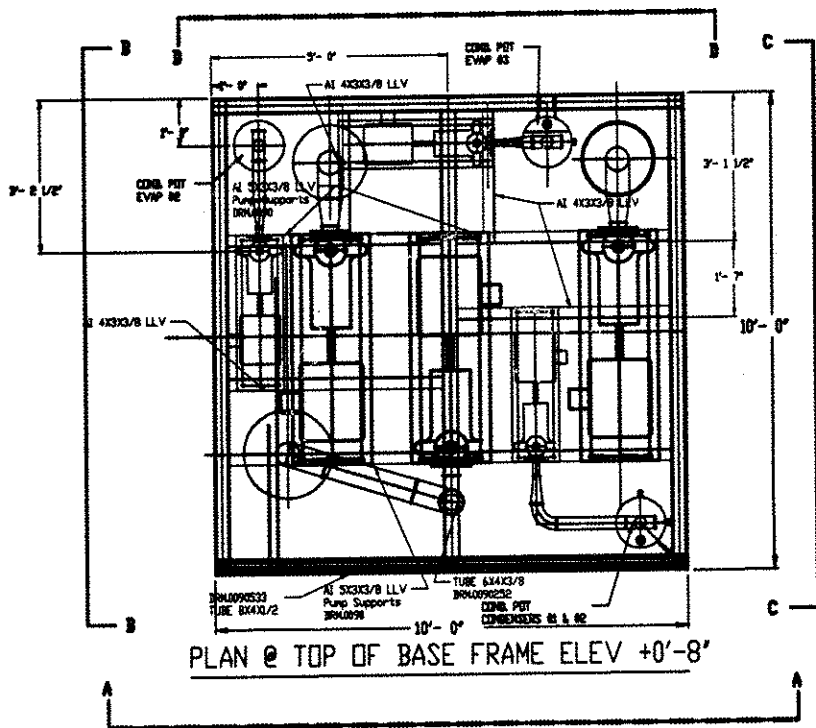
HONIRON
 400 SOUTH CANAL STREET
 JEANERETTE, LOUISIANA, USA 70544
 THIS DRAWING AND THE INFORMATION CONTAINED THEREIN ARE THE PROPERTY OF HONIRON. WITHOUT WRITTEN PERMISSION, ANY COPYING, TRANSMITTAL TO OTHERS, AND ANY USE IS PROHIBITED.



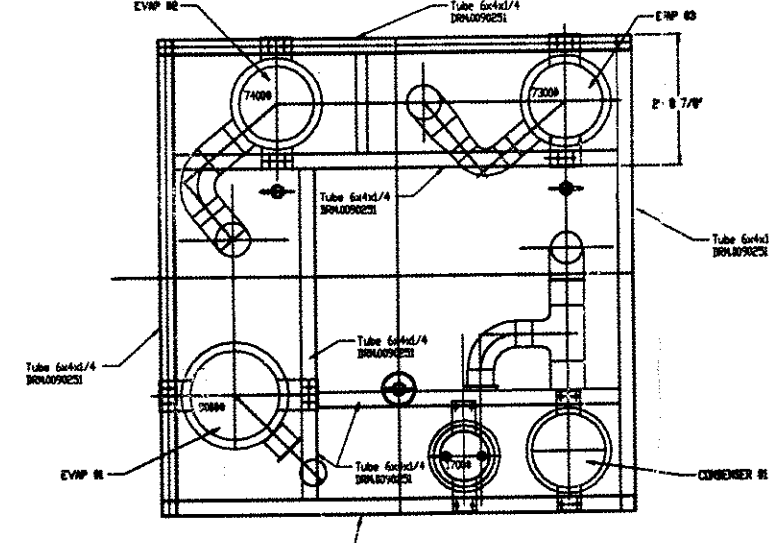
PLAN @ TOP ELEV +40'-0"



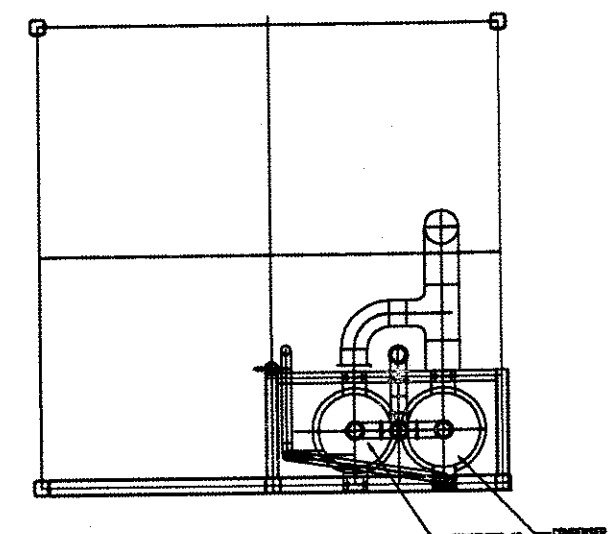
PLAN @ ELEV +14'-0"



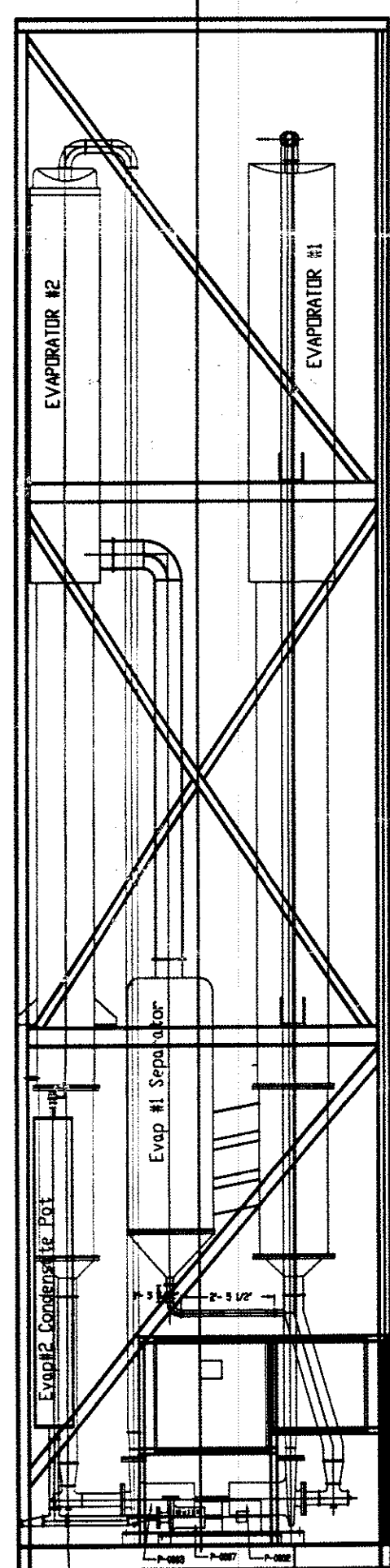
PLAN @ TOP OF BASE FRAME ELEV +0'-8"



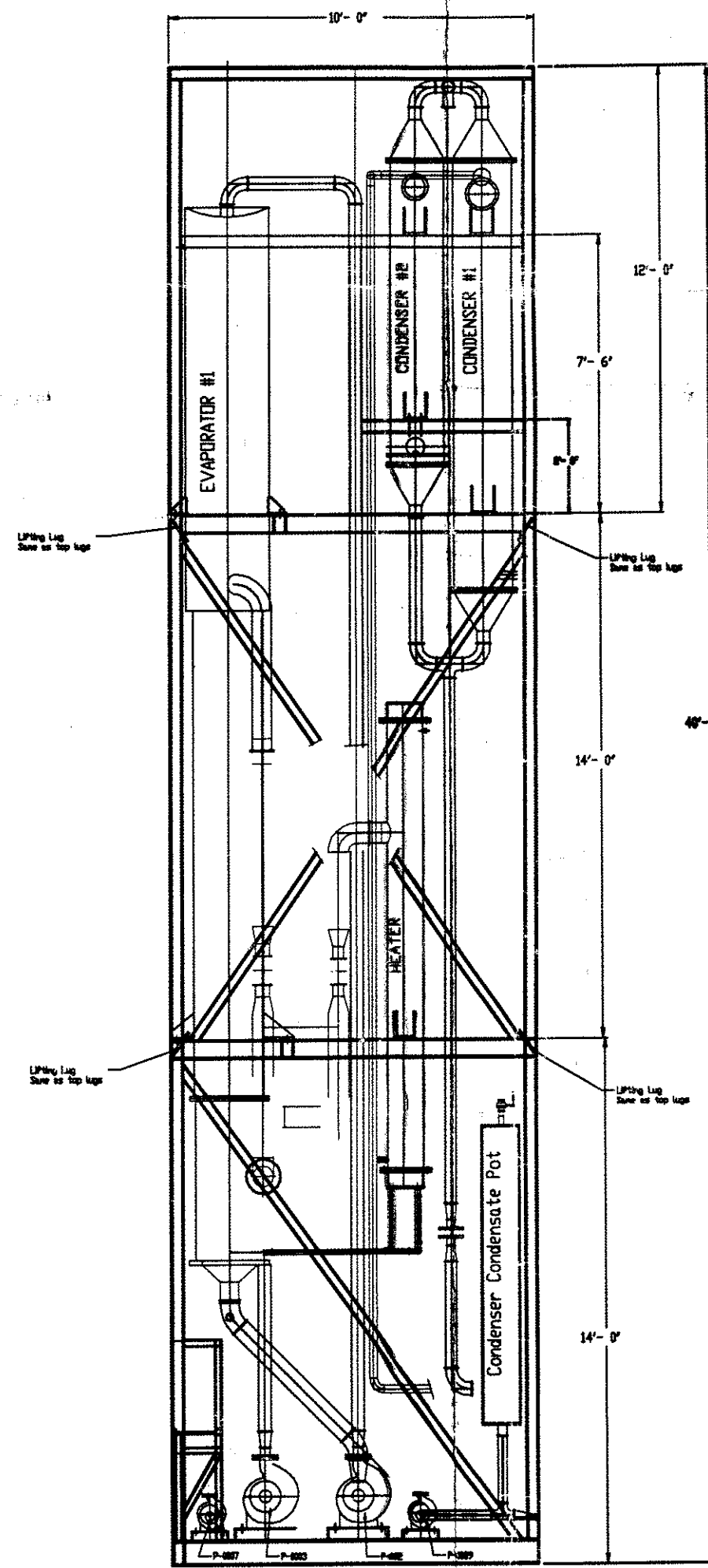
PLAN @ ELEV +28'-0"



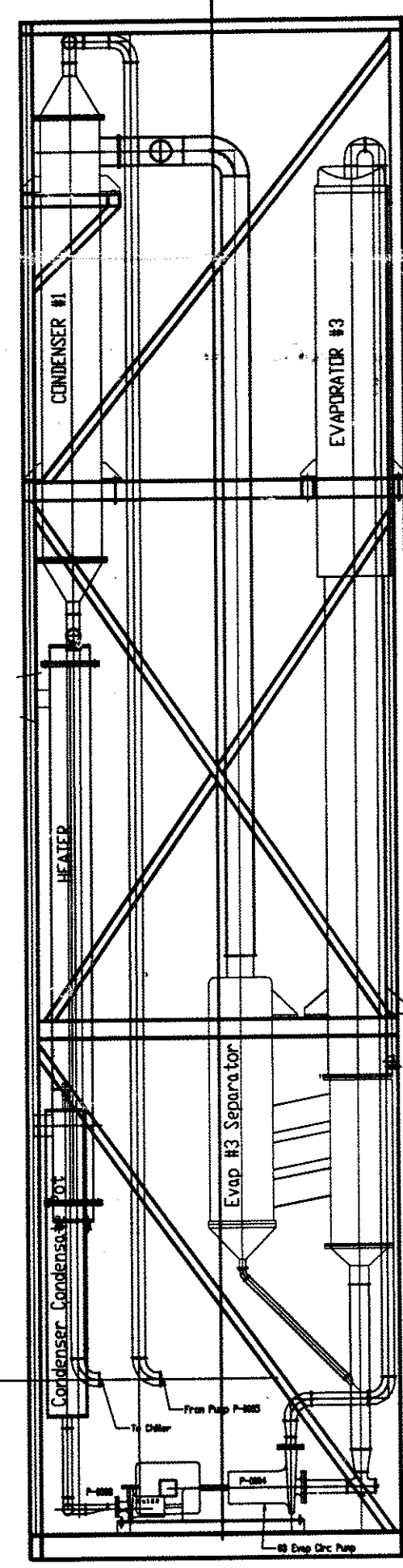
PLAN @ ELEV +35'-6"



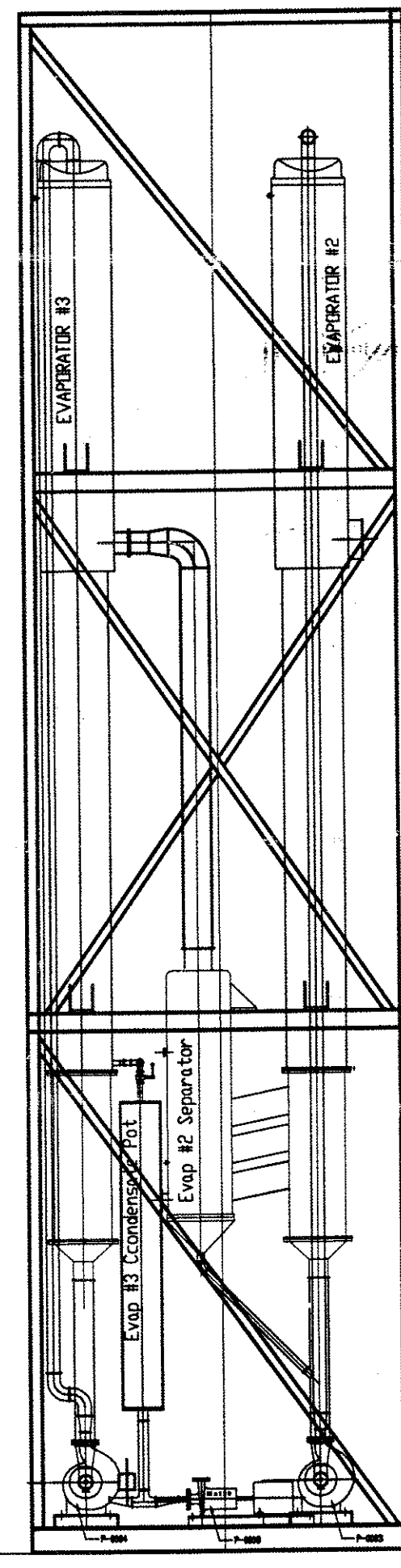
ELEVATION VIEW - B - B



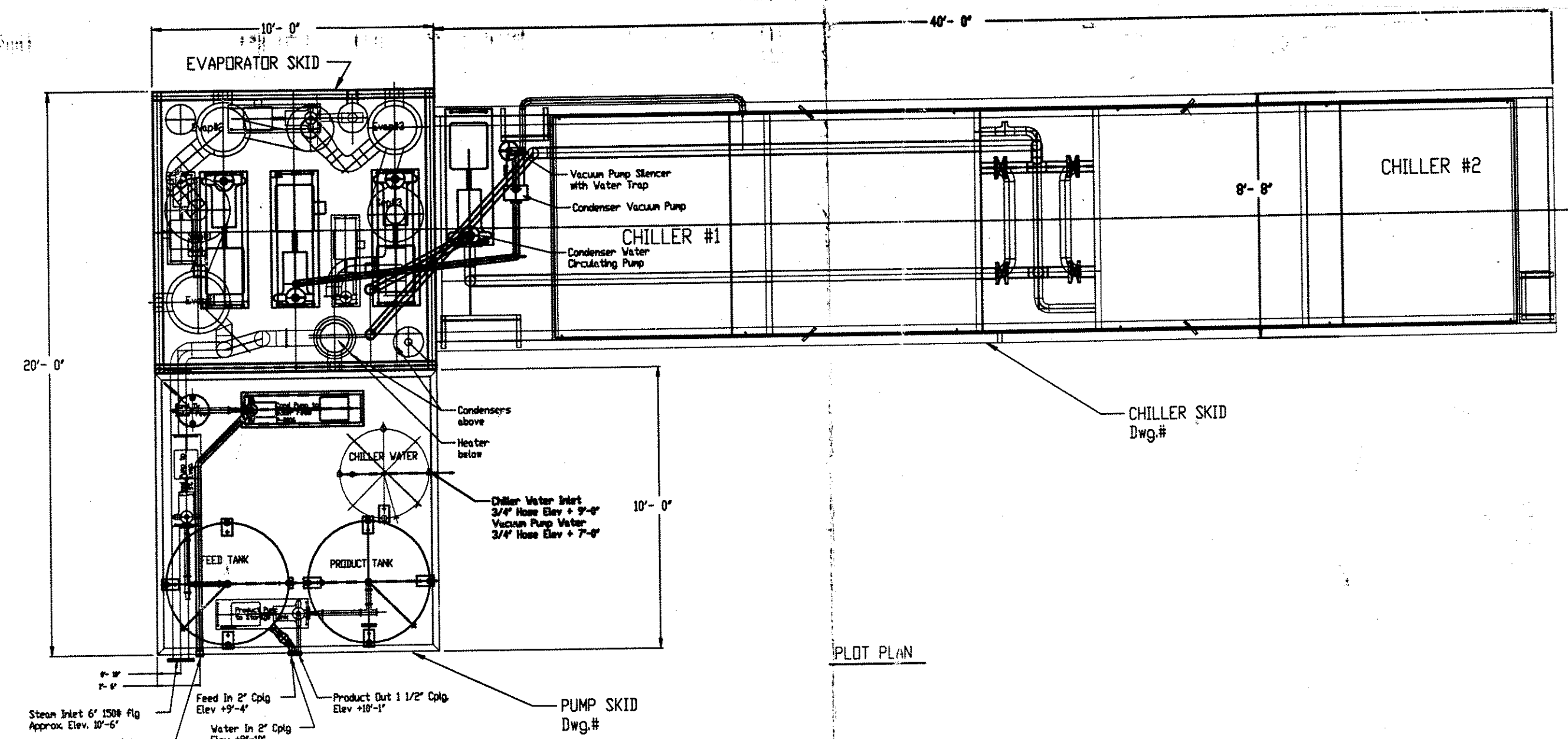
ELEVATION VIEW - A - A



ELEVATION VIEW - C - C



ELEVATION VIEW - D - D



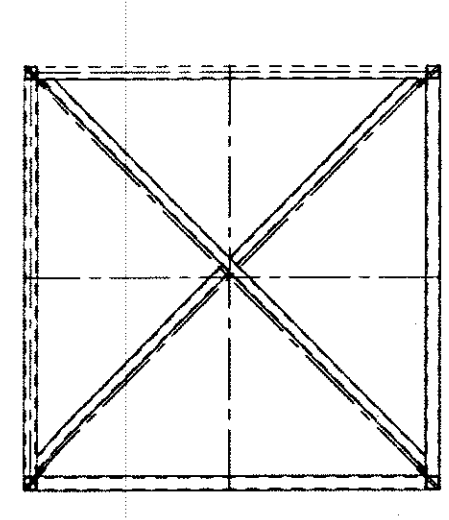
PILOT PLAN

REF: DRAWINGS

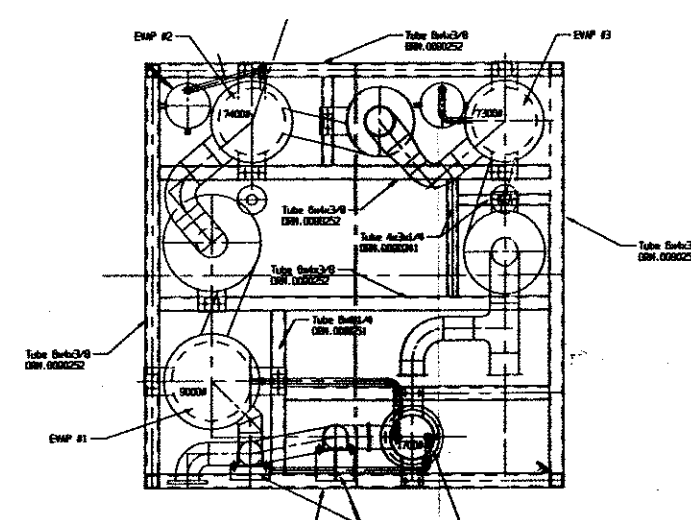
- 9001271 - Chiller Skid
- 9001199 - Pump Skid
- 9001096 - Heater
- 9001041 - P & FD Triple Effect Falling Film Evaporator
- 9001134 - 14' Sealed Pot
- 9001126 - 12' Sealed Pot
- 9001149 - 12' Sealed Pot

ASSET LIQUIDATORS LLC Evergreen, Colorado 80439
 This Drawing is the Property of Asset Liquidators LLC and is being provided for information purposes only and cannot be copied or transmitted to others, without written permission.

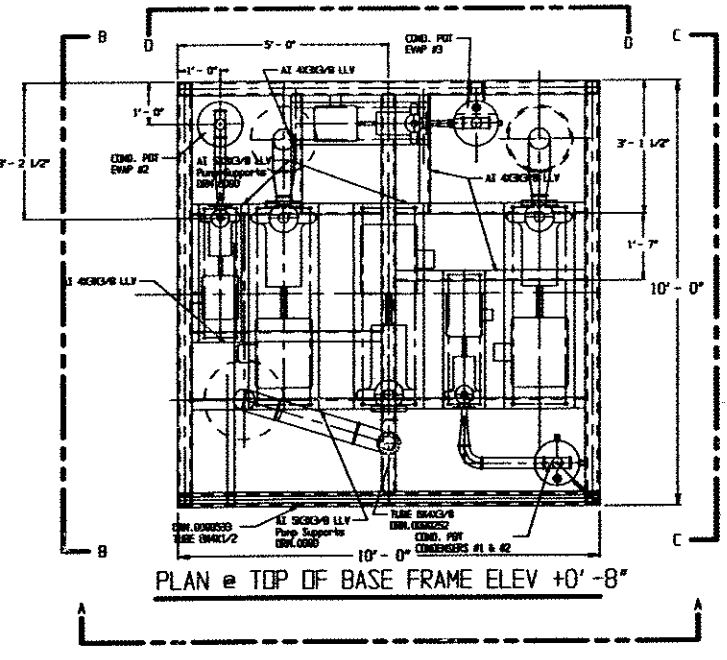
		HONIRON CORPORATION 400 SOUTH CANAL STREET JEANERETTE, LOUISIANA, USA 70544		JOB NO: WJ.00107.01	QTY/RUN: 1
				DRAWN BY: John mestayer	DATE: 03/09/01
				INULIN EVAPORATION SKID	
1	04/30/01	AS BUILT	04/30/01	9001238	REV. 1
REV	DATE	DESCRIPTION	DWG BY	THIS DRAWING AND THE INFORMATION CONTAINED THEREIN ARE THE PROPERTY OF HONIRON. WITHOUT WRITTEN PERMISSION, ANY COPYING, TRANSMITTAL TO OTHERS, AND ANY USE IS PROHIBITED.	



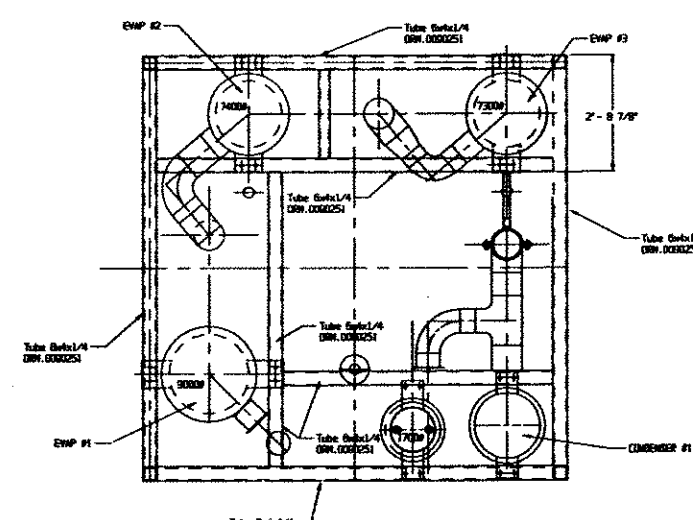
PLAN @ TOP ELEV +40'-0"



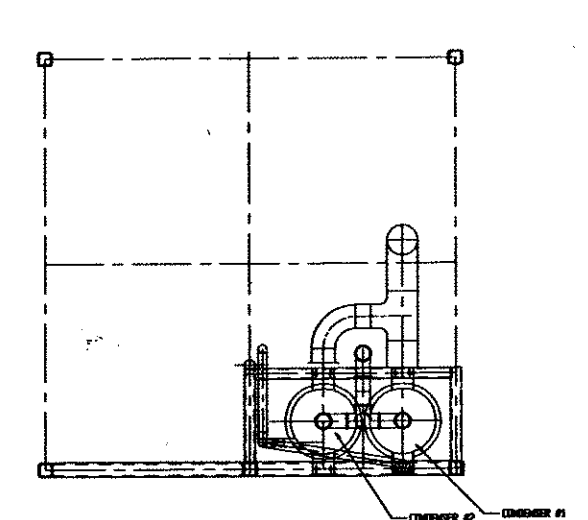
PLAN @ ELEV +14'-0"



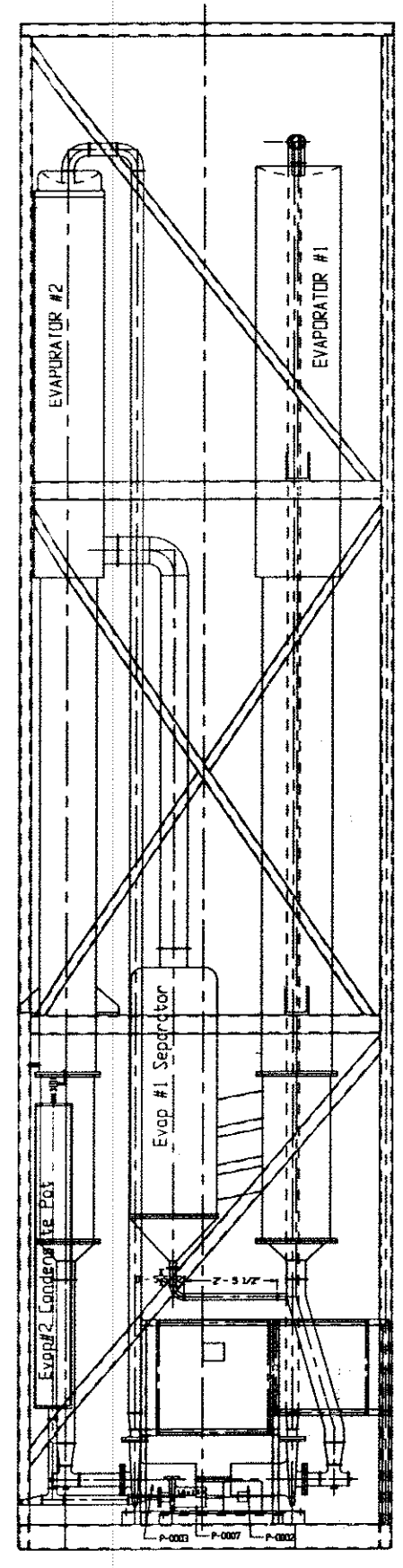
PLAN @ TOP OF BASE FRAME ELEV +0'-8"



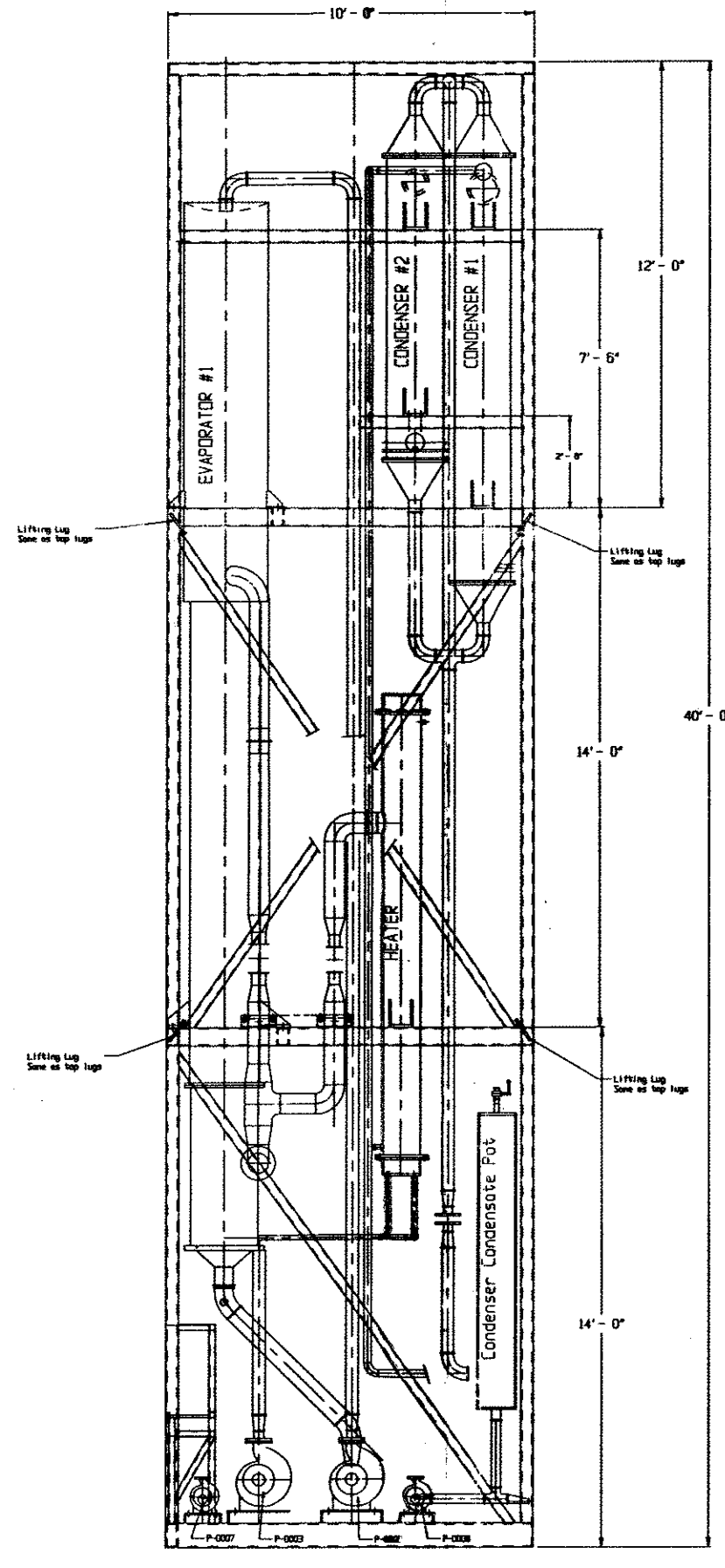
PLAN @ ELEV +28'-0"



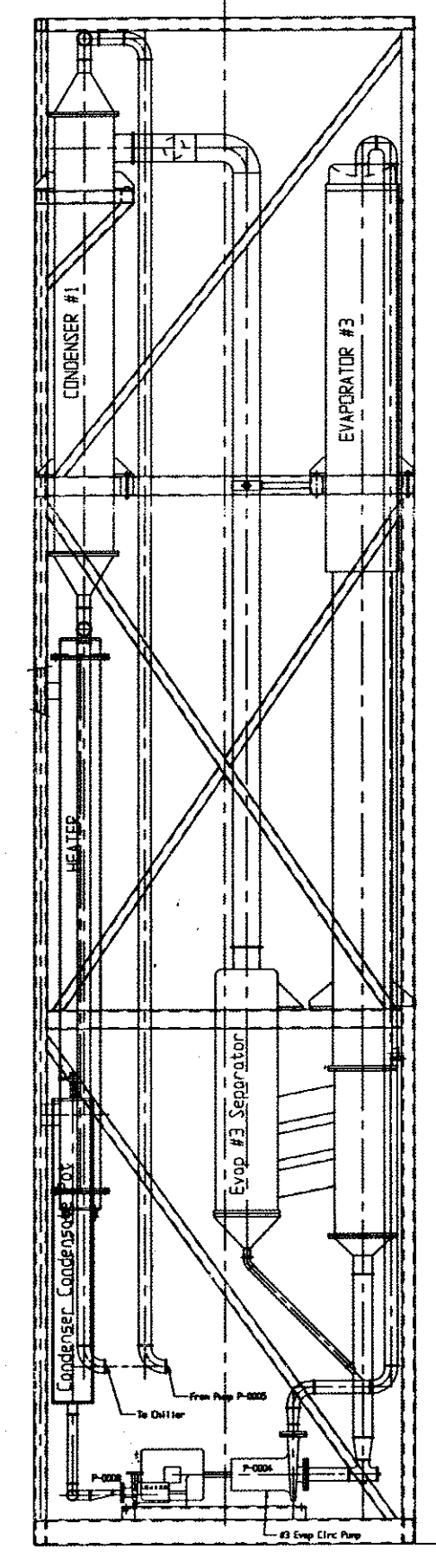
PLAN @ ELEV +35'-6"



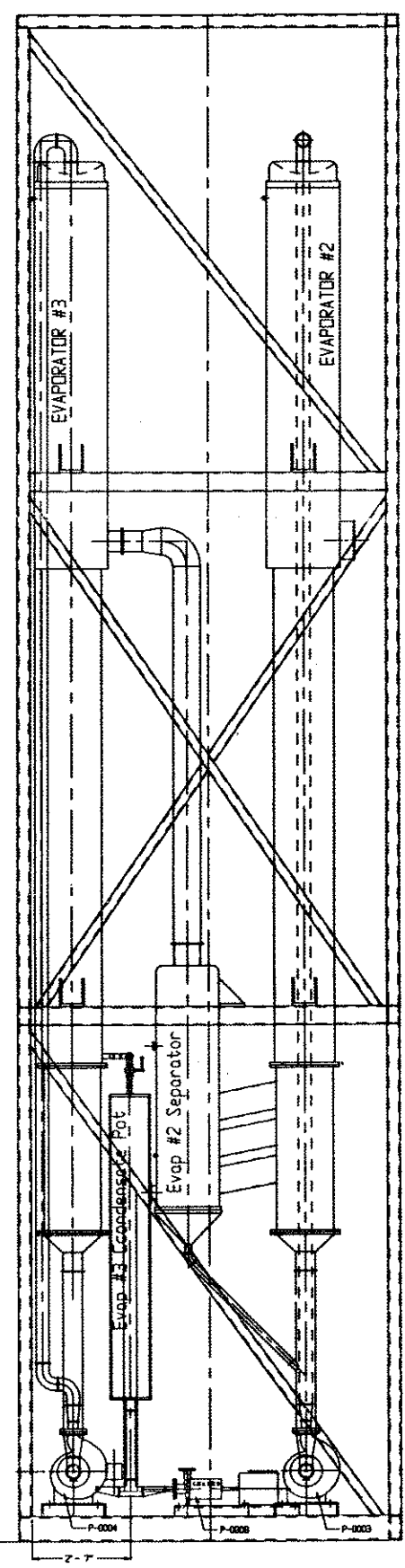
ELEVATION VIEW - B - B



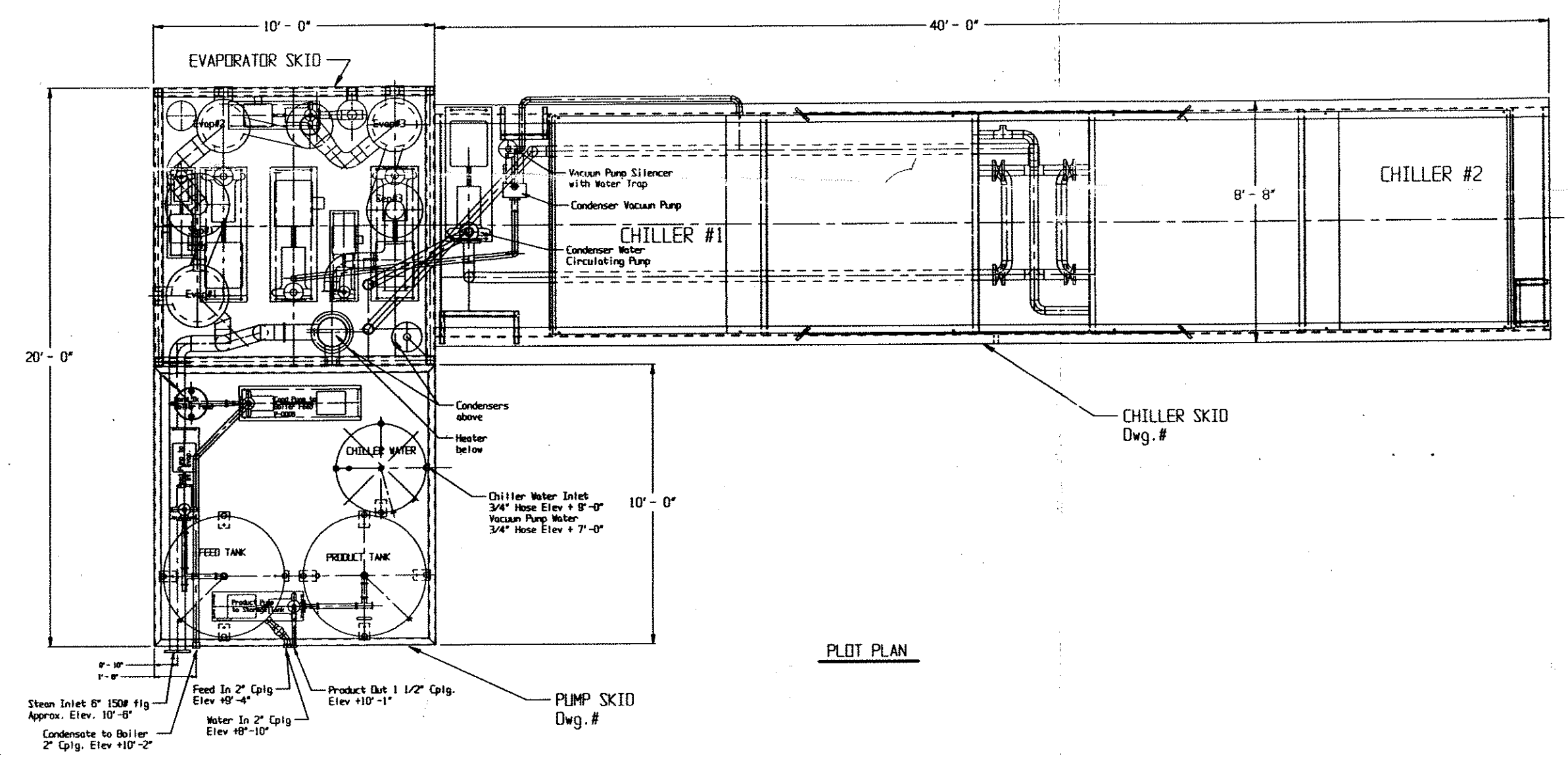
ELEVATION VIEW - A - A



ELEVATION VIEW - C - C



ELEVATION VIEW - D - D



PLOT PLAN

REF: DRAWINGS

- 9001271 - Chiller Skid
- 9001199 - Pump Skid
- 9001096 - Heater
- 9001041 - P & FD Triple Effect Falling Film Evaporator
- 9001134 - 14" Sealed Pot
- 9001126 - 12" Sealed Pot
- 9001149 - 12" Sealed Pot

JOB NO.: WJ.00107.01		DWTY/RUN: 1	
DRAWN BY: john nestoyer		DATE: 03/09/01	
INULIN EVAPORATION SKID			
1 04/30/01		AS BUILT	
REV	DATE	DESCRIPTION	DWG BY
1	04/30/01	AS BUILT	04/30/01
 400 SOUTH CANAL STREET JEANERETTE, LOUISIANA, USA 70544			
THIS DRAWING AND THE INFORMATION CONTAINED THEREIN ARE THE PROPERTY OF HONIRON. WITHOUT WRITTEN PERMISSION, ANY COPYING, TRANSMITTAL TO OTHERS, AND ANY USE IS PROHIBITED.			
		9001238	REV. 1