

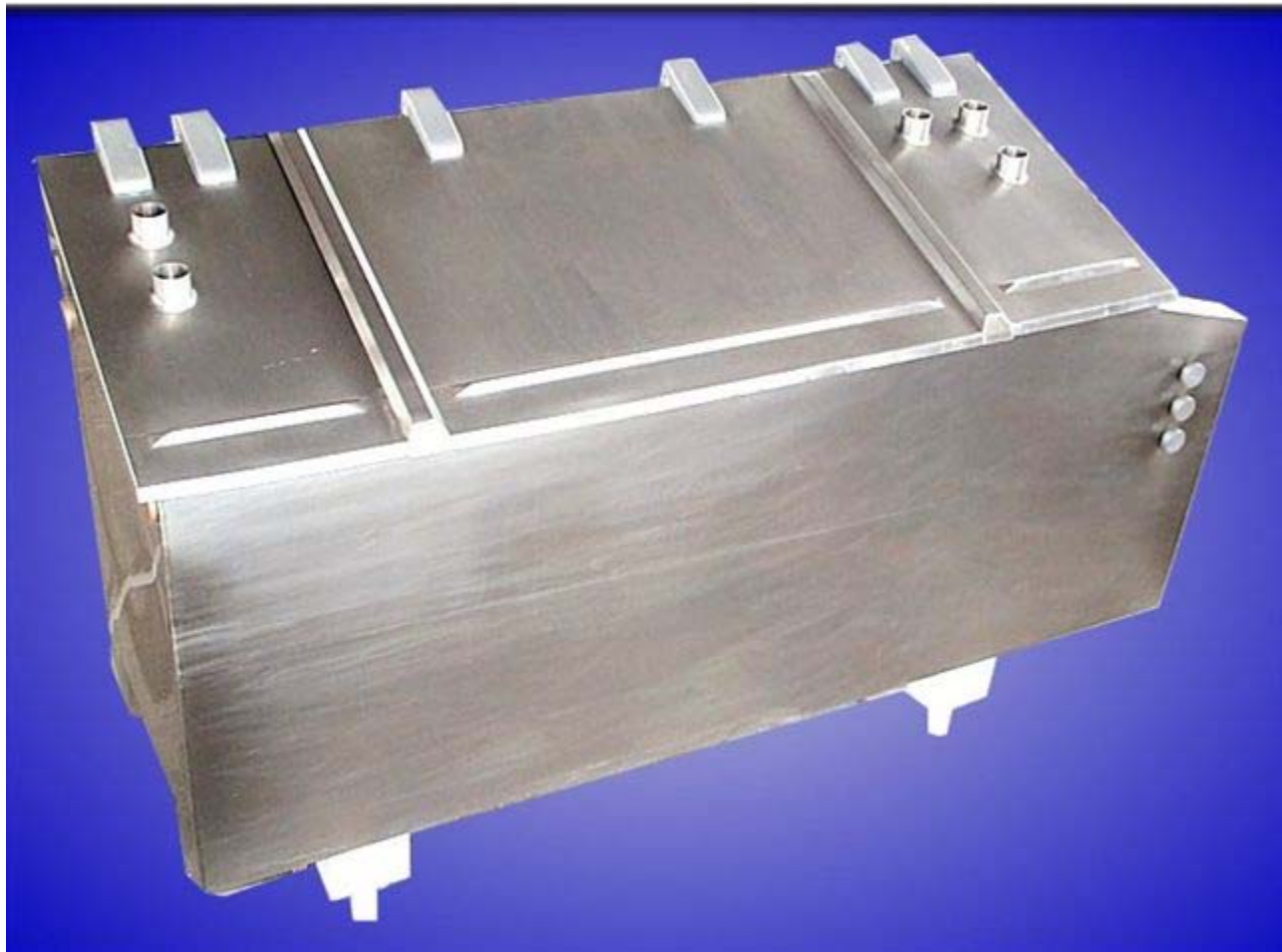
## 200 Gallon VAT Pasteurizer

- ▶ Side - sweep paddle 19 in W x 33 in L, Drive 1/4 in HP 115/230V 1785 RPM
- ▶ Jacket Inlet Connections 1-1/2 in, Jacket thickness 2-3/4 in, less pump
- ▶ Bottom fluid reservoir 67 in L x 16 in W x 4 - 1/2 in H at Center
- ▶ 3 Lift top removable covers
  - Left Cover 15-3/4 in W x 30 in L
  - Center Cover 44 in W x 30 in L
  - Right Cover 15-3/4 in W x 30 in L
- ▶ 5 Top Cover connections 2-3/16 in
- ▶ Inner Trough Dimensions 67-1/2 in L x 22 in W x ( 38 in at Front, 41 in at Center, 44 in at Back) H
- ▶ Bottom Outlet 2 in
- ▶ Temperature Gauge upto 220F
- ▶ Legs 13 in

### Overall Dimensions

91 in L x 34 in W x 60 in H

---



3/18/2004

---









