

# Engineering Data

## VCA Evaporative Condensers

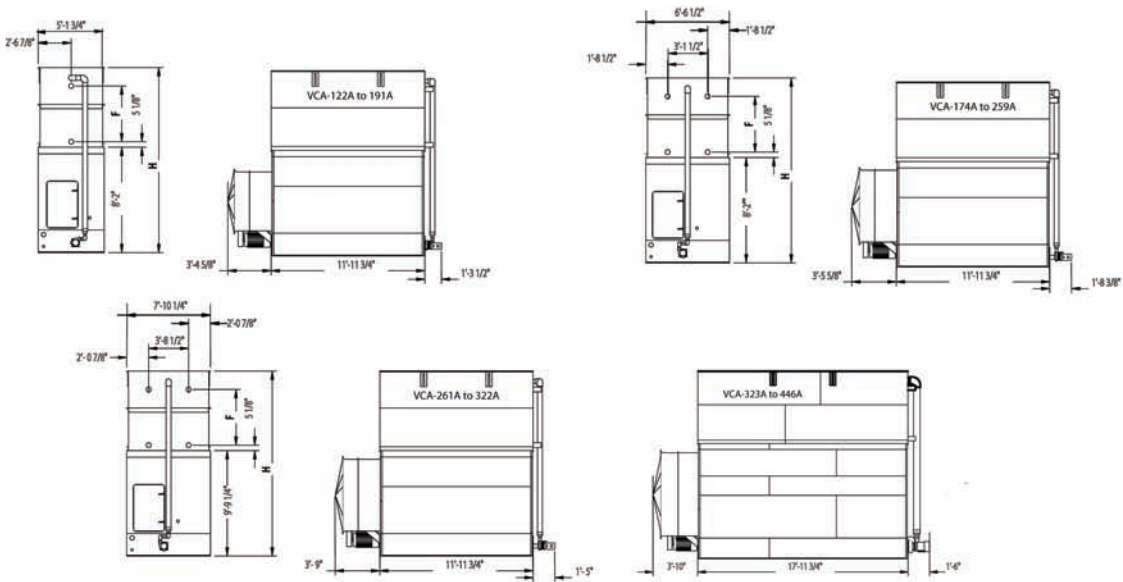


## Engineering Data

Engineering Data .....	1
Structural Support .....	6

B.A.C.

# Engineering Data



Nom Box Size	Model Number <sup>1</sup>	Base Heat Rejection Method (MBH)	R-717 Tons <sup>2</sup>	Fan Motor (HP) <sup>3</sup>	Airflow Rate (CFM)	Pump Motor (HP)	Spray Flow Rate (GPM)	Approximate Weights (lbs)			R-717 Oper Charge (lbs) <sup>4</sup>	Internal Volume (ft <sup>3</sup> )	Remote Sump Bottom Connection			F	H
								Ship Weight (lbs)	Heaviest Section (lbs) <sup>5</sup>	Oper Weight (lbs) <sup>6</sup>			Drain Size (in)	Volume Req (gal)	Approx. Oper Weight (lbs)		
5x12	VCA-122A	1,793	87	3	23,800	1.5	260	6,390	4,350	9,490	184	19	(1) 6	239	7,470	2' 9-1/4"	12' 9-1/2"
	VCA-138A	2,029	98	5	25,900			6,400	4,350	9,500	184	19			7,480	2' 9-1/4"	12' 9-1/2"
	VCA-150A	2,205	106	7.5	28,300			6,430	4,350	9,530	184	19			7,510	2' 9-1/4"	12' 9-1/2"
	VCA-161A	2,367	114	10	31,100			6,440	4,350	9,540	184	19			7,520	2' 9-1/4"	12' 9-1/2"
	VCA-154A	2,264	109	5	24,500			7,270	5,220	10,420	229	24			8,400	3' 6-1/2"	13' 6-3/4"
	VCA-170A	2,499	121	7.5	28,000			7,300	5,220	10,450	229	24			8,430	3' 6-1/2"	13' 6-3/4"
	VCA-182A	2,675	129	10	30,800			7,310	5,220	10,460	229	24			8,440	3' 6-1/2"	13' 6-3/4"
	VCA-178A	2,617	126	7.5	27,300			8,170	6,090	11,360	273	29			9,340	4' 3-3/4"	14' 4"
VCA-191A	2,808	135	10	30,100	8,180	6,090	11,370	273	29	9,350	4' 3-3/4"	14' 4"					
6x12	VCA-174A	2,558	123	5	31,400	2	330	8,480	5,770	12,270	240	26	(1) 8	197	9,040	2' 9-1/4"	12' 9-1/2"
	VCA-192A	2,822	136	7.5	36,000			8,510	5,770	12,300	240	26			9,070	2' 9-1/4"	12' 9-1/2"
	VCA-206A	3,028	146	10	39,650			8,520	5,770	12,310	240	26			9,080	2' 9-1/4"	12' 9-1/2"
	VCA-227A	3,337	161	15	45,400			8,600	5,770	12,390	240	26			9,160	2' 9-1/4"	12' 9-1/2"
	VCA-195A	2,867	138	5	30,600			9,620	6,910	13,470	298	32			10,240	3' 6-1/2"	13' 6-3/4"
	VCA-215A	3,161	153	7.5	35,050			9,650	6,910	13,500	298	32			10,270	3' 6-1/2"	13' 6-3/4"
	VCA-235A	3,455	167	10	38,750			9,660	6,910	13,510	298	32			10,280	3' 6-1/2"	13' 6-3/4"
	VCA-259A	3,807	184	15	44,400			9,740	6,910	13,590	298	32			10,360	3' 6-1/2"	13' 6-3/4"
8x12	VCA-261A	3,837	185	10	43,400	3	400	11,720	8,170	16,230	362	39	(1) 8	243	12,530	3' 6-1/2"	15' 2"
	VCA-288A	4,234	204	15	49,700			11,800	8,170	16,310	362	39			12,610	3' 6-1/2"	15' 2"
	VCA-308A	4,528	219	20	54,700			11,830	8,170	16,340	362	39			12,640	3' 6-1/2"	15' 2"
	VCA-273A	4,013	194	10	42,400			13,080	9,530	17,660	432	46			13,960	4' 3-3/4"	15' 11-1/4"
	VCA-301A	4,425	214	15	48,550			13,160	9,530	17,740	432	46			14,040	4' 3-3/4"	15' 11-1/4"
	VCA-322A	4,733	229	20	53,400			13,190	9,530	17,770	432	46			14,070	4' 3-3/4"	15' 11-1/4"
8x18	VCA-323A	4,748	229	10	59,100	5	600	14,990	9,810	21,710	435	47	(1) 10	332	16,120	2' 9-1/4"	14' 4-3/4"
	VCA-356A	5,233	253	15	67,650			15,070	9,810	21,790	435	47			16,200	2' 9-1/4"	14' 4-3/4"
	VCA-382A	5,601	271	20	74,500			15,090	9,810	21,810	435	47			16,220	2' 9-1/4"	14' 4-3/4"
	VCA-396A	5,821	281	15	65,700			17,070	11,810	23,900	541	58			18,310	3' 6-1/2"	15' 2"
	VCA-424A	6,233	301	20	72,300			17,090	11,810	23,920	541	58			18,330	3' 6-1/2"	15' 2"
	VCA-416A	6,115	295	15	64,200			19,070	13,810	26,000	647	69			20,410	4' 3-3/4"	15' 11-1/4"
	VCA-446A	6,556	317	20	70,650			19,090	13,810	26,020	647	69			20,430	4' 3-3/4"	15' 11-1/4"

**Do not use for construction. Refer to factory certified dimensions.**

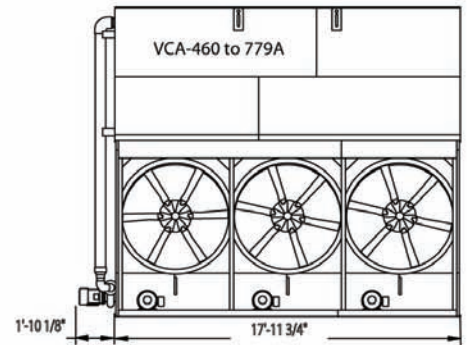
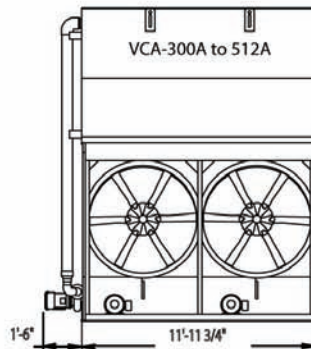
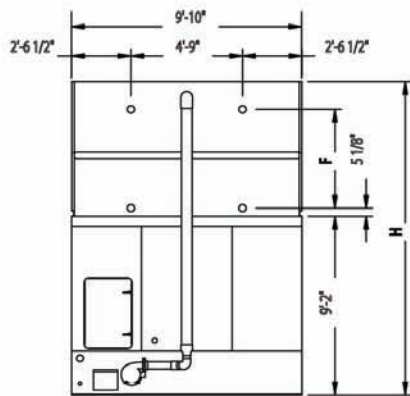
**Notes:**

- Model number denotes nominal tons using R-22 at a 105°F condensing temperature, a 40°F suction temperature, and a 78°F entering wet-bulb temperature.
- R-717 tons are at a 96.3°F condensing temperature, a 20°F suction temperature, and a 78°F entering wet-bulb temperature.

- Operating weight shown is based on total unit weight, weight of refrigerant operating charge, and cold water basin filled to the overflow level.
- Unless otherwise noted, the coil section is the heaviest section.
- Standard refrigerant connection size is 4" BFW (inlet and outlet).
- Refrigerant charge listed is R-717 operating charge. To determine operating charge for R-22, multiply charge by 1.93. For R-134a, multiply by 1.98.



# Engineering Data



Nom Box Size	Model Number <sup>1</sup>	Base Heat Rejection Method (MBH)	R-717 Tons <sup>2</sup>	Fan Motor (HP) <sup>3</sup>	Airflow Rate (CFM)	Pump Motor (HP)	Spray Flow Rate (GPM)	Approximate Weight (lbs)			R-717 Oper Charge (lbs) <sup>4</sup>	Internal Coil Volume (ft <sup>3</sup> )	Remote Sump Bottom Connection				
								Ship Weight (lbs)	Heaviest Section (lbs) <sup>5</sup>	Oper Weight (lbs) <sup>4</sup>			Drain Size (in)	Volume Req (gal)	Approx Oper Weight (lbs)	F	H
10x12	VCA-300A	4,410	213	(2) 5	59,800	5	500	12,270	8,360	18,340	369	39	(1) 8	305	13,710	2' 9-1/4"	13' 9-1/2"
	VCA-331A	4,866	235	(2) 7.5	68,500			12,330	8,360	18,400	369				13,770	2' 9-1/4"	13' 9-1/2"
	VCA-340A	4,998	241	(2) 5	55,400			13,950	10,040	20,110	458				15,480	3' 6-1/2"	14' 6-3/4"
	VCA-375A	5,513	266	(2) 7.5	63,400			14,010	10,040	20,170	458				15,540	3' 6-1/2"	14' 6-3/4"
	VCA-402A	5,909	285	(2) 10	69,800			14,030	10,040	20,190	458				15,560	3' 6-1/2"	14' 6-3/4"
	VCA-407A	5,983	289	(2) 10	65,400			15,710	11,720	21,960	546				17,330	4' 3-3/4"	15' 4"
	VCA-401A	5,895	285	(2) 7.5	54,500			16,660	12,690	22,970	608				18,340	4' 3-3/4"	15' 4"
	VCA-429A	6,306	305	(2) 10	60,000			16,680	12,690	22,990	608				18,360	4' 3-3/4"	15' 4"
	VCA-473A	6,953	336	(2) 15	68,600			16,820	12,690	23,130	608				18,500	4' 3-3/4"	15' 4"
	VCA-393A	5,777	279	(2) 5	49,900			18,440	14,530	24,850	707				20,220	5' 1"	16' 1-1/4"
	VCA-433A	6,365	307	(2) 7.5	57,100			18,500	14,530	24,910	707				20,280	5' 1"	16' 1-1/4"
	VCA-464A	6,821	329	(2) 10	62,800			18,520	14,530	24,930	707				20,300	5' 1"	16' 1-1/4"
	VCA-512A	7,526	364	(2) 15	71,900			18,660	14,530	25,070	707				20,440	5' 1"	16' 1-1/4"
10x18	VCA-460A	6,762	327	(3) 5	87,700	7.5	760	17,770	12,010	26,970	551	59	(1) 10	418	19,910	2' 9-1/4"	13' 9-1/2"
	VCA-507A	7,453	360	(3) 7.5	100,400			17,870	12,010	27,070	551				20,010	2' 9-1/4"	13' 9-1/2"
	VCA-543A	7,982	386	(3) 10	110,500			17,900	12,010	27,100	551				20,040	2' 9-1/4"	13' 9-1/2"
	VCA-510A	7,497	362	(3) 5	87,200			20,260	14,500	29,600	684				22,540	3' 6-1/2"	14' 6-3/4"
	VCA-560A	8,232	398	(3) 7.5	95,700			20,360	14,500	29,700	684				22,640	3' 6-1/2"	14' 6-3/4"
	VCA-600A	8,820	426	(3) 10	105,300			20,390	14,500	29,730	684				22,670	3' 6-1/2"	14' 6-3/4"
	VCA-585A	8,600	415	(3) 7.5	93,600			22,860	17,000	32,330	818				25,270	4' 3-3/4"	15' 4"
	VCA-620A	9,114	440	(3) 10	100,500			22,890	17,000	32,360	818				25,300	4' 3-3/4"	15' 4"
	VCA-488A	7,174	346	(3) 3	60,300			24,240	18,510	33,800	911				26,740	4' 3-3/4"	15' 4"
	VCA-609A	8,952	432	(3) 7.5	81,800			24,370	18,510	33,930	911				26,870	4' 3-3/4"	15' 4"
	VCA-653A	9,599	464	(3) 10	90,000			24,400	18,510	33,960	911				26,900	4' 3-3/4"	15' 4"
	VCA-707A	10,393	502	(3) 10	94,200			27,150	21,260	36,860	1,061				29,380	5' 1"	16' 1-1/4"
	VCA-779A	11,451	553	(3) 15	107,900			27,360	21,260	37,070	1,061				29,590	5' 1"	16' 1-1/4"

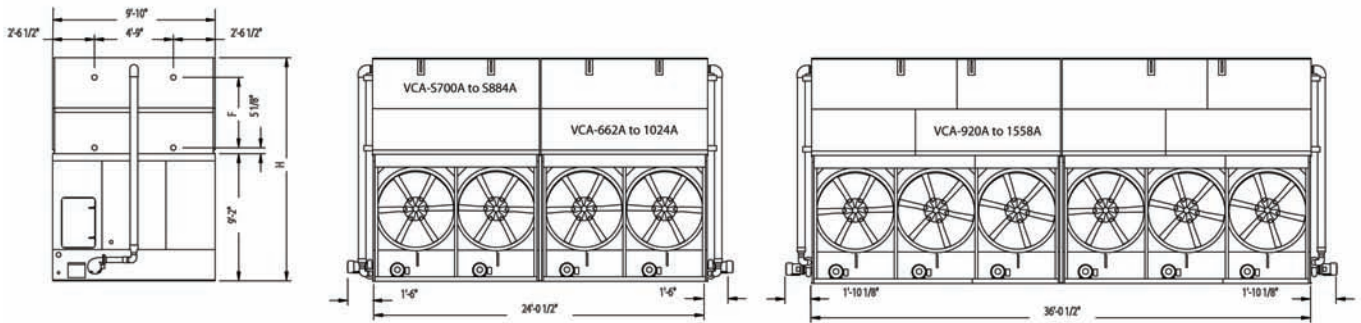
**Do not use for construction. Refer to factory certified dimensions.**

**Notes:**

- Model number denotes nominal tons using R-22 at a 105°F condensing temperature, a 40°F suction temperature, and a 78°F entering wet-bulb temperature.
- R-717 tons are at a 96.3°F condensing temperature, a 20°F suction temperature, and a 78°F entering wet-bulb temperature.
- Operating weight shown is based on total unit weight, weight of refrigerant operating charge, and cold water basin filled to the overflow level.
- Unless otherwise noted, the coil section is the heaviest section.
- Standard refrigerant connection size is 4" BFW (inlet and outlet).
- Refrigerant charge listed is R-717 operating charge. To determine operating charge for R-22, multiply charge by 1.93. For R-134a, multiply by 1.98.



# Engineering Data



Nom Box Size	Model Number <sup>a</sup>	Base Heat Rejection Method (MBH)	R-717 Tons <sup>b</sup>	Fan Motor (HP) <sup>c</sup>	Airflow Rate (CFM)	Pump Motor (HP)	Spray Flow Rate (GPM)	Approximate Weights (lbs)				Internal Volume (ft <sup>3</sup> )	Remote Sump Bottom Connection		F	H	
								Ship Weight (lbs)	Heaviest Section (lbs) <sup>d</sup>	Oper Weight (lbs) <sup>e</sup>	R-717 Oper Charge (lbs) <sup>f</sup>		Drain Size (in)	Volume Required (gal)			Approx. per Weight (lbs)
10x24	VCA-662A	9,731	470	(4) 7.5	137,000	(2) 5	1020	24,750	8,410	36,900	739	79	(1) 12	481	25,370	2' 9-1/4"	13' 9-1/2"
	VCA-680A	9,996	483	(4) 5	110,800			27,990	10,090	40,310	916	99			28,780	3' 6-1/2"	14' 6-3/4"
	VCA-750A	11,025	533	(4) 7.5	126,800			28,110	10,090	40,430	916	99			28,900	3' 6-1/2"	14' 6-3/4"
	VCA-804A	11,819	571	(4) 10	139,600			28,160	10,090	40,480	916	99			28,950	3' 6-1/2"	14' 6-3/4"
	VCA-760A	11,172	540	(4) 7.5	118,800			31,470	11,770	43,970	1,093	118			32,440	4' 3-3/4"	15' 4"
	VCA-814A	11,966	578	(4) 10	130,800			31,520	11,770	44,020	1,093	118			32,490	4' 3-3/4"	15' 4"
	VCA-858A	12,613	609	(4) 10	120,000			33,460	12,740	46,080	1,216	131			34,550	4' 3-3/4"	15' 4"
	VCA-946A	13,906	672	(4) 15	137,200			33,740	12,740	46,360	1,216	131			34,830	4' 3-3/4"	15' 4"
	VCA-866A	12,730	615	(4) 7.5	114,200			37,090	14,580	49,910	1,414	152			38,380	5' 1"	16' 1-1/4"
	VCA-928A	13,642	659	(4) 10	125,600			37,140	14,580	49,960	1,414	152			38,430	5' 1"	16' 1-1/4"
	VCA-1024A	15,053	727	(4) 15	143,800			37,420	14,580	50,240	1,414	152			38,710	5' 1"	16' 1-1/4"
	VCA-S700A	10,296	497	(4) 5	110,800			27,250	19,440	39,570	912	98			28,040	3' 6-1/2"	14' 6-3/4"
	VCA-S828A	12,173	588	(4) 10	139,600			27,420	19,440	39,740	912	98			28,210	3' 6-1/2"	14' 6-3/4"
	VCA-S838A	12,325	595	(4) 10	130,800			30,730	22,750	43,230	1,091	117			31,700	4' 3-3/4"	15' 4"
VCA-S884A	12,991	627	(4) 10	120,000	32,790	24,810	45,410	1,216	131	33,880	4' 3-3/4"	15' 4"					
10x36	VCA-920A	13,524	653	(6) 5	175,400	(2) 7.5	1540	35,710	12,100	54,110	1,102	119	(1) 14	835	37,020	2' 9-1/4"	13' 9-1/2"
	VCA-1086A	15,964	772	(6) 10	221,000			35,970	12,100	54,370	1,102	119			37,280	2' 9-1/4"	13' 9-1/2"
	VCA-1020A	14,994	724	(6) 5	174,400			40,700	14,590	59,370	1,369	147			42,280	3' 6-1/2"	14' 6-3/4"
	VCA-1120A	16,464	795	(6) 7.5	191,400			40,890	14,590	59,560	1,369	147			42,470	3' 6-1/2"	14' 6-3/4"
	VCA-1200A	17,640	852	(6) 10	210,600			40,960	14,590	59,630	1,369	147			42,540	3' 6-1/2"	14' 6-3/4"
	VCA-1062A	15,611	754	(6) 5	163,600			45,690	17,090	64,630	1,637	176			47,540	4' 3-3/4"	15' 4"
	VCA-1169A	17,199	831	(6) 7.5	187,200			45,880	17,090	64,820	1,637	176			47,730	4' 3-3/4"	15' 4"
	VCA-1240A	18,228	880	(6) 10	201,000			45,950	17,090	64,890	1,637	176			47,800	4' 3-3/4"	15' 4"
	VCA-1218A	17,905	865	(6) 7.5	163,600			48,900	18,600	68,030	1,823	196			50,940	4' 3-3/4"	15' 4"
	VCA-1306A	19,198	927	(6) 10	180,000			48,970	18,600	68,100	1,823	196			51,010	4' 3-3/4"	15' 4"
	VCA-1414A	20,786	1,004	(6) 10	188,400			54,460	21,340	73,880	2,122	229			56,640	5' 1"	16' 1-1/4"
	VCA-1558A	22,903	1,106	(6) 15	215,800			54,880	21,340	74,300	2,122	229			57,060	5' 1"	16' 1-1/4"

**Do not use for construction. Refer to factory certified dimensions.**

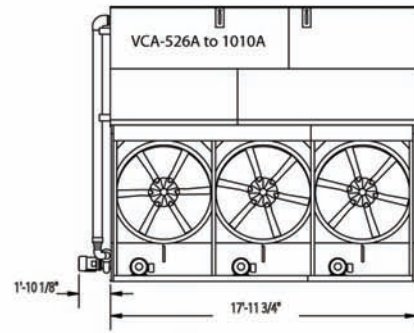
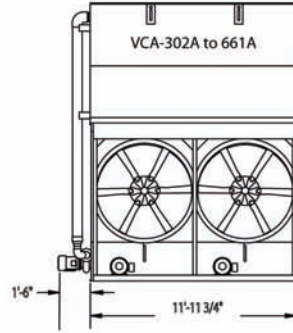
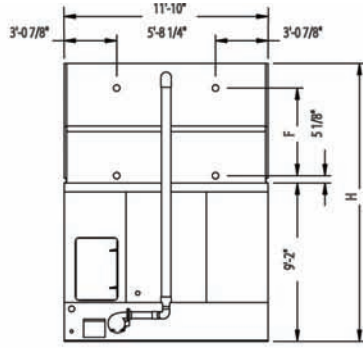
**Notes:**

- Model number denotes nominal tons using R-22 at a 105°F condensing temperature, a 40°F suction temperature, and a 78°F entering wet-bulb temperature.
- R-717 tons are at a 96.3°F condensing temperature, a 20°F suction temperature, and a 78°F entering wet-bulb temperature.
- Operating weight shown is based on total unit weight, weight of refrigerant operating charge, and cold water basin filled to the overflow level.
- Unless otherwise noted, the coil section is the heaviest section.
- Standard refrigerant connection size is 4" BFW (inlet and outlet).
- Refrigerant charge listed is R-717 operating charge. To determine operating charge for R-22, multiply charge by 1.93. For R-134a, multiply by 1.98.





# VCA Models



Nom Box Size	Model Number <sup>1</sup>	Base Heat Rejection Method (MBH)	R-717 Tons <sup>2</sup>	Fan Motor (HP) <sup>3</sup>	Airflow Rate (CFM)	Pump Motor (HP)	Spray Flow rate (GPM)	Approximate Weights (lbs)			R-717 Oper Charge (lbs) <sup>6</sup>	Internal Volume (ft <sup>3</sup> )	Remote Sump Bottom Connection		F	H	
								Ship Weight (lbs)	Heaviest Section (lbs) <sup>4</sup>	Oper Weight (lbs) <sup>4</sup>			Drain Size (in)	Volume Req (gal)			Approx Oper Weight (lbs)
12x12	VCA-302A	4,439	214	(2) 3	50,400	5	610	13,900	9,880	21,620	447	48	(1) 8	506	16,860	2' 9-1/4"	13' 9-1/2"
	VCA-342A	5,027	243	(2) 5	59,750			13,920	9,880	21,640	447	48			16,880	2' 9-1/4"	13' 9-1/2"
	VCA-377A	5,542	268	(2) 7.5	68,400			13,880	9,880	21,600	447	48			16,840	2' 9-1/4"	13' 9-1/2"
	VCA-404A	5,939	287	(2) 10	75,300			13,900	9,880	21,620	447	48			16,860	2' 9-1/4"	13' 9-1/2"
	VCA-381A	5,601	271	(2) 5	59,800			15,860	11,890	23,690	554	59			18,930	3' 6-1/2"	14' 6-3/4"
	VCA-420A	6,174	298	(2) 7.5	68,400			15,890	11,890	23,720	554	59			18,960	3' 6-1/2"	14' 6-3/4"
	VCA-451A	6,630	320	(2) 10	73,100			15,910	11,890	23,740	554	59			18,980	3' 6-1/2"	14' 6-3/4"
	VCA-471A	6,924	334	(2) 10	71,400			17,930	13,910	25,860	661	71			21,100	4' 3-3/4"	15' 4"
	VCA-513A	7,541	364	(2) 15	81,750			18,000	13,910	25,930	661	71			21,170	4' 3-3/4"	15' 4"
	VCA-491A	7,218	349	(2) 10	71,200			19,170	15,150	27,180	734	79			22,420	4' 3-3/4"	15' 4"
	VCA-541A	7,953	384	(2) 15	81,500			19,240	15,150	27,250	734	79			22,490	4' 3-3/4"	15' 4"
	VCA-580A	8,526	412	(2) 20	89,700			19,480	15,150	27,490	734	79			22,730	4' 3-3/4"	15' 4"
	VCA-537A	7,894	381	(2) 10	67,300			21,290	17,270	29,420	854	92			24,660	5' 1"	16' 1-1/4"
	VCA-584A	8,600	415	(2) 15	77,040			21,360	17,270	29,490	854	92			24,730	5' 1"	16' 1-1/4"
	VCA-626A	9,202	444	(2) 20	85,200			21,460	17,270	29,590	854	92			24,830	5' 1"	16' 1-1/4"
	VCA-661A	9,717	469	(2) 25	91,800			21,600	17,270	29,730	854	92			24,970	5' 1"	16' 1-1/4"
12x18	VCA-526A	7,732	373	(3) 5	89,700	7.5	920	20,030	14,360	31,730	666	71	(1) 10	695	24,240	2' 9-1/4"	13' 9-1/2"
	VCA-581A	8,541	413	(3) 7.5	102,650			20,060	14,360	31,760	666	71			24,270	2' 9-1/4"	13' 9-1/2"
	VCA-623A	9,158	442	(3) 10	113,000			20,070	14,360	31,770	666	71			24,280	2' 9-1/4"	13' 9-1/2"
	VCA-582A	8,555	413	(3) 5	87,000			23,020	17,350	34,880	828	89			27,390	3' 6-1/2"	14' 6-3/4"
	VCA-642A	9,437	456	(3) 7.5	99,600			23,050	17,350	34,910	828	89			27,420	3' 6-1/2"	14' 6-3/4"
	VCA-688A	10,114	488	(3) 10	109,650			23,060	17,350	34,920	828	89			27,430	3' 6-1/2"	14' 6-3/4"
	VCA-602A	8,849	427	(3) 5	85,100			26,010	20,340	38,030	990	106			30,540	4' 3-3/4"	15' 4"
	VCA-664A	9,761	471	(3) 7.5	97,400			26,040	20,340	38,060	990	106			30,570	4' 3-3/4"	15' 4"
	VCA-711A	10,452	505	(3) 10	107,150			26,050	20,340	38,070	990	106			30,580	4' 3-3/4"	15' 4"
	VCA-785A	11,540	557	(3) 15	122,650			26,130	20,340	38,150	990	106			30,660	4' 3-3/4"	15' 4"
	VCA-751A	11,025	533	(3) 10	106,800			27,940	22,230	40,070	1,101	118			32,580	4' 3-3/4"	15' 4"
	VCA-827A	12,157	587	(3) 15	122,200			28,020	22,230	40,150	1,101	118			32,660	4' 3-3/4"	15' 4"
	VCA-887A	13,039	630	(3) 20	134,500			28,160	22,230	40,290	1,101	118			32,800	4' 3-3/4"	15' 4"
	VCA-895A	13,157	635	(3) 15	115,000			31,230	25,440	43,540	1,282	138			36,050	5' 1"	16' 1-1/4"
	VCA-957A	14,068	679	(3) 20	126,080			31,370	25,440	43,680	1,282	138			36,190	5' 1"	16' 1-1/4"
	VCA-1010A	14,847	717	(3) 25	135,800			31,500	25,440	43,810	1,282	138			36,320	5' 1"	16' 1-1/4"

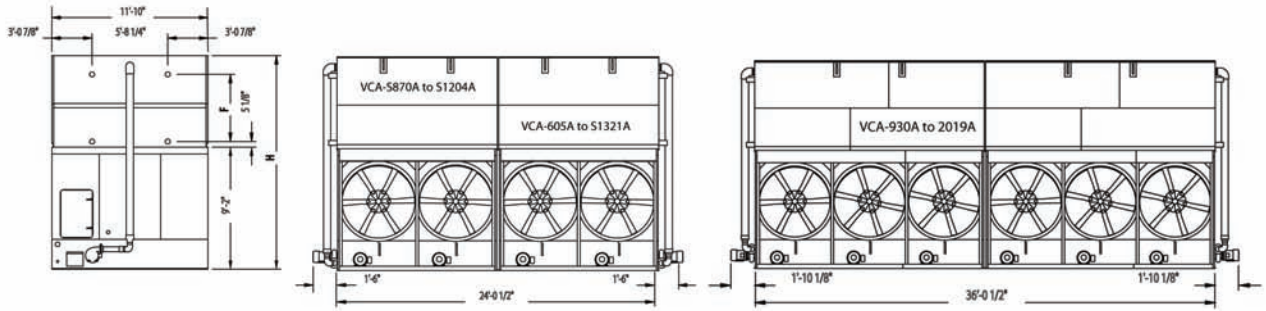
Do not use for construction. Refer to factory certified dimensions.

**Notes:**

- Model number denotes nominal tons using R-22 at a 105°F condensing temperature, a 40°F suction temperature, and a 78°F entering wet-bulb temperature.
- R-717 tons are at a 96.3°F condensing temperature, a 20°F suction temperature, and a 78°F entering wet-bulb temperature.
- Operating weight shown is based on total unit weight, weight of refrigerant operating charge, and cold water basin filled to the overflow level.
- Unless otherwise noted, the coil section is the heaviest section.
- Standard refrigerant connection size is 4" BFW (inlet and outlet).
- Refrigerant charge listed is R-717 operating charge. To determine operating charge for R-22, multiply charge by 1.93. For R-134a, multiply by 1.98.



# Engineering Data



Nom Box Size	Model Number <sup>1</sup>	Base Heat Rejection Method (MBH)	R-717 Tons <sup>2</sup>	Fan Motor (HP)	Airflow Rate (CFM)	Pump Motor (HP)	Spray Flow Rate (GPM)	Approximate Weights (lbs)			R-717 Oper Charge (lbs) <sup>4</sup>	Internal Coil Volume (ft <sup>3</sup> )	Remote Sump Bottom Connection				
								Ship Weight (lbs)	Heaviest Section (lbs) <sup>3</sup>	Oper Weight (lbs) <sup>4</sup>			Drain Size (in)	Volume Req (gal)	Approx Oper Weight (lbs)	F	H
12x24	VCA-605A	8,894	430	(4) 3	100,800	(2) 5	1240	27,750	9,950	43,190	894	96	(1) 12	800	28,730	2' 9-1/4"	13' 9-1/2"
	VCA-684A	10,055	486	(4) 5	119,500			27,770	9,950	43,210	894	96			28,750	2' 9-1/4"	13' 9-1/2"
	VCA-754A	11,084	535	(4) 7.5	136,800			27,810	9,950	43,250	894	96			28,790	2' 9-1/4"	13' 9-1/2"
	VCA-808A	11,878	574	(4) 10	150,600			27,820	9,950	43,260	894	96			28,800	2' 9-1/4"	13' 9-1/2"
	VCA-762A	11,201	541	(4) 5	119,600			31,790	11,960	47,440	1,108	119			32,980	3' 6-1/2"	14' 6-3/4"
	VCA-840A	12,348	596	(4) 7.5	136,800			31,830	11,960	47,480	1,108	119			33,020	3' 6-1/2"	14' 6-3/4"
	VCA-902A	13,259	640	(4) 10	146,200			31,840	11,960	47,490	1,108	119			33,030	3' 6-1/2"	14' 6-3/4"
	VCA-879A	12,921	624	(4) 7.5	129,800			35,850	13,970	51,720	1,322	142			37,260	4' 3-3/4"	15' 4"
	VCA-942A	13,847	669	(4) 10	142,800			35,860	13,970	51,730	1,322	142			37,270	4' 3-3/4"	15' 4"
	VCA-1026A	15,082	728	(4) 15	163,500			35,940	13,970	51,810	1,322	142			37,350	4' 3-3/4"	15' 4"
	VCA-982A	14,435	697	(4) 10	142,400			38,340	15,210	54,350	1,469	158			39,890	4' 3-3/4"	15' 4"
	VCA-1082A	15,905	768	(4) 15	163,000			38,420	15,210	54,430	1,469	158			39,970	4' 3-3/4"	15' 4"
	VCA-1160A	17,052	824	(4) 20	179,400			38,730	15,210	54,740	1,469	158			40,280	4' 3-3/4"	15' 4"
	VCA-1075A	15,803	763	(4) 10	134,600			42,590	17,340	58,840	1,708	184			44,380	5' 1"	16' 1-1/4"
	VCA-1170A	17,199	831	(4) 15	154,080			42,670	17,340	58,920	1,708	184			44,460	5' 1"	16' 1-1/4"
	VCA-1252A	18,404	889	(4) 20	170,400			42,840	17,340	59,090	1,708	184			44,630	5' 1"	16' 1-1/4"
	VCA-1321A	19,419	938	(4) 25	183,600			42,980	17,340	59,230	1,708	184			44,770	5' 1"	16' 1-1/4"
	VCA-S870A	12,789	618	(4) 7.5	136,800			31,100	23,190	46,750	1,103	119			32,290	3' 6-1/2"	14' 6-3/4"
	VCA-S932A	13,700	662	(4) 10	146,200			31,110	23,190	46,760	1,103	119			32,300	3' 6-1/2"	14' 6-3/4"
	VCA-S972A	14,288	690	(4) 10	142,800			35,080	27,160	50,940	1,319	142			36,480	4' 3-3/4"	15' 4"
VCA-S1071A	15,744	760	(4) 15	163,500	35,160	27,160	51,020	1,319	142	36,560	4' 3-3/4"	15' 4"					
VCA-S1019A	14,979	723	(4) 10	153,400	37,630	29,710	53,640	1,469	158	39,180	4' 3-3/4"	15' 4"					
VCA-S1124A	16,523	798	(4) 15	163,000	37,700	29,710	53,710	1,469	158	39,250	4' 3-3/4"	15' 4"					
VCA-S1204A	17,699	855	(4) 20	179,400	37,710	29,710	53,720	1,469	158	39,260	4' 3-3/4"	15' 4"					
12x36	VCA-930A	13,671	660	(6) 3	151,400	(2) 7.5	1860	40,190	14,480	63,590	1,332	143	(1) 14	1,428	42,120	2' 9-1/4"	13' 9-1/2"
	VCA-1052A	15,464	747	(6) 5	179,400			40,210	14,480	63,610	1,332	143			42,140	2' 9-1/4"	13' 9-1/2"
	VCA-1162A	17,081	825	(6) 7.5	205,300			40,250	14,480	63,650	1,332	143			42,180	2' 9-1/4"	13' 9-1/2"
	VCA-1246A	18,316	885	(6) 10	226,000			40,270	14,480	63,670	1,332	143			42,200	2' 9-1/4"	13' 9-1/2"
	VCA-1284A	18,875	912	(6) 7.5	199,200			46,220	17,460	69,940	1,656	178			48,470	3' 6-1/2"	14' 6-3/4"
	VCA-1376A	20,227	977	(6) 10	219,300			46,240	17,460	69,960	1,656	178			48,490	3' 6-1/2"	14' 6-3/4"
	VCA-1204A	17,699	855	(6) 5	170,200			52,150	20,450	76,190	1,980	213			54,720	4' 3-3/4"	15' 4"
	VCA-1327A	19,507	942	(6) 7.5	194,800			52,190	20,450	76,230	1,980	213			54,760	4' 3-3/4"	15' 4"
	VCA-1422A	20,903	1,010	(6) 10	214,300			52,210	20,450	76,250	1,980	213			54,780	4' 3-3/4"	15' 4"
	VCA-1570A	23,079	1,115	(6) 15	245,300			52,290	20,450	76,330	1,980	213			54,860	4' 3-3/4"	15' 4"
	VCA-1501A	22,065	1,066	(6) 10	213,600			56,000	22,340	80,270	2,203	237			58,800	4' 3-3/4"	15' 4"
	VCA-1654A	24,314	1,174	(6) 15	244,400			56,080	22,340	80,350	2,203	237			58,880	4' 3-3/4"	15' 4"
	VCA-1774A	26,078	1,260	(6) 20	269,000			56,330	22,340	80,600	2,203	237			59,130	4' 3-3/4"	15' 4"
	VCA-1790A	26,313	1,271	(6) 15	230,000			62,490	25,550	87,120	2,564	276			65,650	5' 1"	16' 1-1/4"
	VCA-1914A	28,136	1,359	(6) 20	252,160			62,740	25,550	87,370	2,564	276			65,900	5' 1"	16' 1-1/4"
	VCA-2019A	29,679	1,433	(6) 25	271,600			62,870	25,550	87,500	2,564	276			66,030	5' 1"	16' 1-1/4"

**Do not use for construction. Refer to factory certified dimensions.**

**Notes:**

- Model number denotes nominal tons using R-22 at a 105°F condensing temperature, a 40°F suction temperature, and a 78°F entering wet-bulb temperature.
- R-717 tons are at a 96.3°F condensing temperature, a 20°F suction temperature, and a 78°F entering wet-bulb temperature.
- Operating weight shown is based on total unit weight, weight of refrigerant operating charge, and cold water basin filled to the overflow level.
- Unless otherwise noted, the coil section is the heaviest section.
- Standard refrigerant connection size is 4" BFW (inlet and outlet).
- Refrigerant charge listed is R-717 operating charge. To determine operating charge for R-22, multiply charge by 1.93. For R-134a, multiply by 1.98.



# Structural Support

The recommended support arrangement for the VCA Evaporative Condenser consists of parallel I-beams running the full length of the unit. Besides providing adequate support, the steel also serves to raise the unit above any solid foundation which might restrict air movement or prevent access to the unit. The steel support beam must be level at the top. Support beams and anchor bolts are to be selected and installed by others. Refer to the BAC unit certified print for bolt hole location.

## Beam Size and Length

Beam size should be calculated in accordance with accepted structural practice. Use 65 percent of the operating weight as a uniform load on each beam. The length of the beam must be at least equal to the length of the basin. Refer to Engineering Data for basin dimensions.

Maximum permissible beam deflection and center line distances between bolt holes are tabulated in the table to the right.

Model Number	D	Max Deflection
VCA-122A thru 191A	4' 11-1/2"	3/8"
VCA-174A thru 259A	6' 4-1/4"	3/8"
VCA-261A thru 322A	7' 8"	3/8"
VCA-323A thru 446A	7' 8"	1/2"
VCA-300A thru 512A	9' 7-1/2"	3/8"
VCA-460A thru 1558A	9' 7-1/2"	1/2"
VCA-S700A thru S884A	9' 7-1/2"	1/2"
VCA-302A thru 661A	11' 7-1/4"	3/8"
VCA-526A thru 2019A	11' 7-1/4"	1/2"
VCA-S870A thru S1204A	11' 7-1/4"	1/2"

