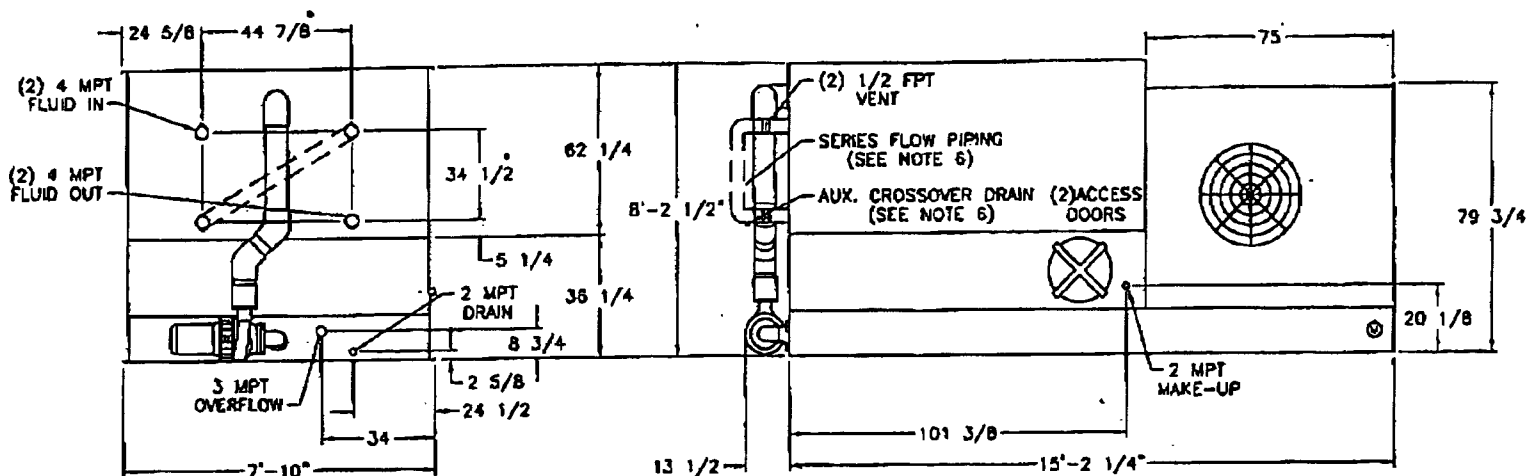


Existing Unit LRW 68-4-2



NOTES:

1. (M) - FAN MOTOR LOCATION
2. MAKE-UP WATER PRESSURE 20 psi MIN. 50 psi MAX.
3. 3/40 DIA. MOUNTING HOLES. REFER TO RECOMMENDED STEEL SUPPORT DRAWING.
4. * APPROXIMATE DIMENSIONS. DO NOT USE FOR PRE-FABRICATION OF CONNECTING PIPING.
5. MPT DENOTES MALE PIPE THREAD, FPT DENOTES FEMALE PIPE THREAD, BFW DENOTES BEVELED FOR WELDING.
6. SERIES FLOW PIPING AND AUX. CROSSOVER DRAIN ARE BY OTHERS.

| WEIGHTS | | | NO. SHIPPING SECTIONS |
|----------|-------|------------------|-----------------------|
| SHIPPING | OPER. | HEAVIEST SECTION | |
| 10860 | 17750 | 10860 | 1 |

EVAPCO MODEL (2) LRW 68-4-2 CLOSED CIRCUIT COOLERS
 CERTIFIED FOR HONIRON CORPORATION PROJECT PORTABLE COOLER
 CUSTOMER ORDER NO. 00298.01 EVAPCO NO. M014877-78
 CAPACITY EACH UNIT 109 GPM OF WATER 120°F IN 85°F OUT 80°F E.W.D.
 FAN MOTOR HP EACH UNIT (1) 30 ELEC. SPEC. 460/60/3
 PUMP MOTOR HP (1) 2 ELEC. SPEC. 460/60/3
 REMARKS EACH UNIT ARRANGED FOR SERIES FLOW. COIL PRESSURE DROP 1.4 PSI. DRIVES SIZED FOR 0" ESP.



**CLOSED CIRCUIT
COOLER**

AVT/dah 2/21/01

WV080910ERA-SF