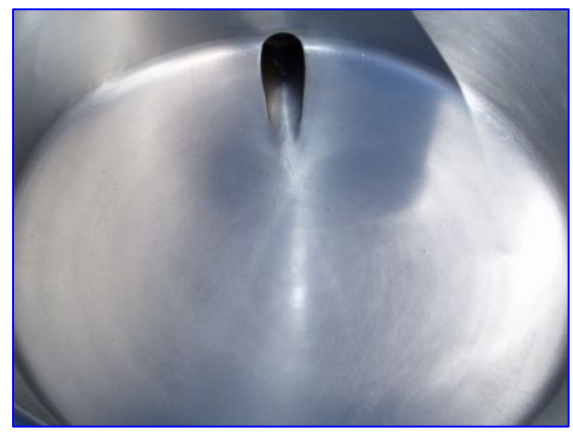


# Vulcan-Hart Electric Fully-Jacketed Kettle- 60 Gallon

<b>Mfg: Vulcan-Hart</b>	<b>Model: EL-60</b>
<b>Stock No. 40.200</b>	<b>Serial No. 74114404</b>

Vulcan-Hart Electric Fully-Jacketed Kettle- 60 Gallon. Model EL60. S/N 74114404. Nat'l Bd: 7629. Kettle interior bottom sloped to front for smooth product flow through a mounted, tapered, plug type food draw-off valve. Features include: on/off switch with signal light and thermostat control, low water cut-off control, and pressure limit switch and pressure gauge. Electrical requirements: 24 kW, 208 V, 60 Hz, 3 phase. Inlets: (1) 1 in. dia. NPT (female, steam), (1) 4-1/2 in. dia. (kettle). Outlets: (1) 1/2 in. dia. NPT (male, pressure relief valve), (1) 2 in. dia. draw-off valve. Overall dimensions: 44 in. L x 41 in. W x 40 in. H.





## ES, EL, ET SERIES ELECTRIC FULLY JACKETED KETTLE



<b>EL40</b>	40 gallons	151 liters
<b>ES60</b>	60 gallons	227 liters
<b>EL80</b>	80 gallons	303 liters
<b>ET100</b>	100 gallons	379 liters
<b>ET125</b>	125 gallons	473 liters
<b>ET150</b>	150 gallons	568 liters

### SPECIFICATIONS:

Electric fully jacketed stationary kettle, Vulcan Model No. \_\_\_\_\_. Kettle is mounted on 2" diameter legs with adjustable flanged feet. Cover is stainless steel dome shaped with drop type handle and insulated knob. The dish shaped interior bottom is sloped to the front for a smooth product flow through a mounted, tapered, 2" plug type food product draw-off valve. Draw-off includes opening strainer. Graduated measuring rod. Furnished standard with a 15 PSI relief valve, magnetic conductor and electric heating elements, on/off switch with signal light and thermostat control, low water cut-off control and a pressure limit switch and pressure gauge. Power supply to be (208) (240) volt, 1 or 3 ph, 50/60 Hz standard.

U L listed. Classified by U L to NSF std. #4. Meets ASME code.

### STANDARD FEATURES

- Kettle fully steam jacketed.
- Mounted on stainless steel 2" diameter legs with adjustable flange feet.
- Stainless steel dome shaped spring assist cover with drop type handle.
- Condensate ring on cover hinges.
- Kettle interior bottom sloped to front for smooth product flow through a mounted, tapered, plug type food product draw-off valve of standard 2" diameter.
- Draw-off opening strainer.
- Graduated measuring rod.
- 15 PSI relief valve.
- Faucet bracket.
- Magnetic conductor and electric heating elements.
- On/off switch with signal light and thermostat control.
- Low water cut-off control.
- Pressure limit switch and pressure gauge.
- Available standard 208 volt, 3 phase, 50/60 Hz or 240 volt, 3 phase, 50/60 Hz.
- One year limited parts and labor warranty.

### OPTIONS

- 3" tapered, plug type draw-off valve in place of 2".
- Change in leg height to increase clearance under draw-off valve.
- Swing drain collector.
- 316 stainless steel jacket liner.
- (1) phase, 18 KW, 24 KW.
- 480 volt, 3 phase, 50/60 Hz.
- Second year extended limited parts and labor warranty.

### ACCESSORIES

- (12") (18" double jointed) single pantry faucet.
- (12") (18" double jointed) double pantry faucet.
- Double pantry washdown hose with 16" add-on faucet with backflow preventer.
- Double pantry washdown hose with backflow preventer.
- Double pantry pot filler and backflow preventer.
- Rotating tri-basket assembly.
- Clean-up kit to include draw-off brush, clean-up brush with 36" handle and paddle scraper with 40" handle.
- 48" stainless steel whip.



# ES, EL, ET SERIES

## ELECTRIC FULLY JACKETED KETTLE

### NOTE:

- Dimensions which locate the above connections have a tolerance of + or -3" (+ or -75 mm).
- Installation of backflow preventers, vacuum breakers and other specific code requirements is the responsibility of the owner and installer. It is the responsibility of the owner and installer to comply with local codes.
- Plastic drains are not recommended due to inherent limited temperatures of the plastic. Boiler purge temperatures may exceed 180°F. The installer may be required to provide means to reduce boiler purge water temperature to be that of the condensate temperature of 140°F or less.
- This appliance is manufactured for commercial installation only and is not intended for home use.

### SERVICE CONNECTIONS:

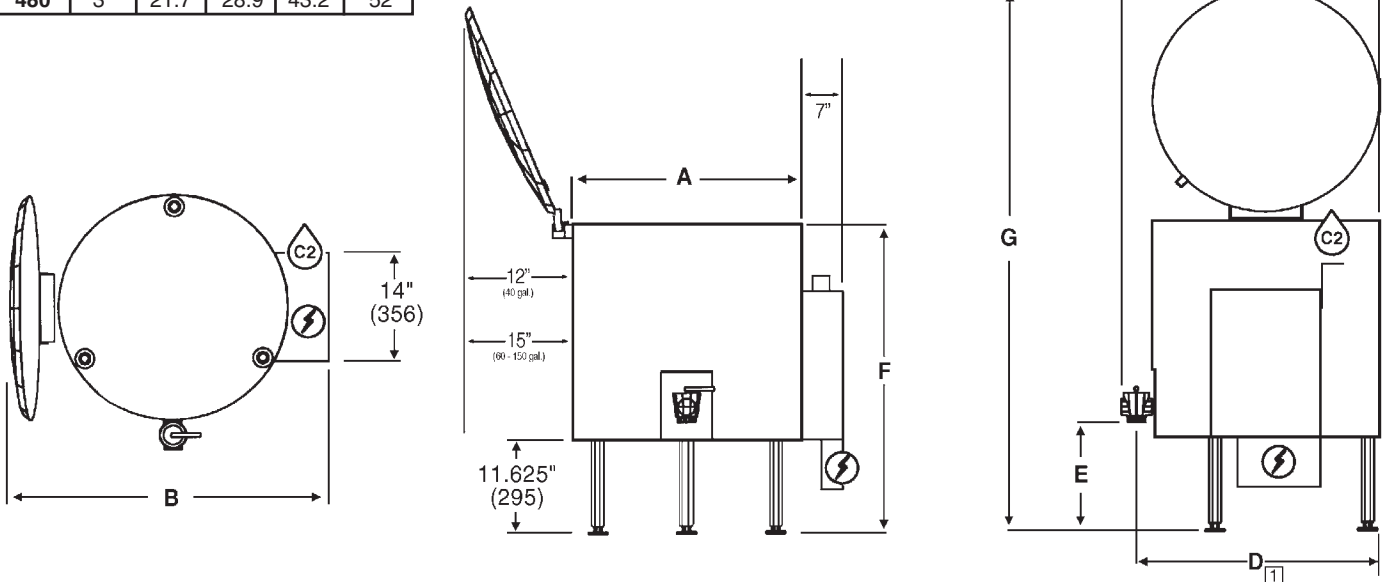
**C2** Water: Faucet location.

### BRIMFUL CAPACITIES:

Model	Gallons	Quarts	Liters	4 oz. svgs.
EL40	40	160	152	1280
ES60	60	240	227	1920
EL80	80	320	303	2560
ET100	100	400	379	3200
ET125	125	500	473	4000
ET150	150	600	568	4800

⚡ POWER		KW			
VOLT	PH	18	24	36	43.2
208	1	86.6	115	N/A	N/A
208	3	50	66.7	100	120
240	1	75	100	N/A	N/A
240	3	43.3	57.8	86.6	104
480	3	21.7	28.9	43.2	52

**1** Add 2" to "C" & "D" for 3" plug-type draw-off



MODEL	CAPACITY	KW	A	B	C	D	E	F	G	H	I
EL40	40 gal.	24	29	48	34	32	13	36	67	16 <sup>3</sup> / <sub>4</sub>	18 <sup>1</sup> / <sub>2</sub>
	151 liters		737	1219	864	813	330	914	1702	425	470
ES60	60 gal.	24	36 <sup>1</sup> / <sub>2</sub>	58 <sup>1</sup> / <sub>2</sub>	41 <sup>1</sup> / <sub>2</sub>	39 <sup>1</sup> / <sub>2</sub>	13	35	74	20 <sup>3</sup> / <sub>4</sub>	22 <sup>1</sup> / <sub>2</sub>
	227 liters		927	1486	1054	1003	330	889	1880	527	572
EL80	80 gal.	36	36 <sup>1</sup> / <sub>2</sub>	58 <sup>1</sup> / <sub>2</sub>	41 <sup>1</sup> / <sub>2</sub>	39 <sup>1</sup> / <sub>2</sub>	13	40	79	20 <sup>3</sup> / <sub>4</sub>	22 <sup>1</sup> / <sub>2</sub>
	303 liters		927	1486	1054	1003	330	1016	2007	527	572
ET100	100 gal.	36	36 <sup>1</sup> / <sub>2</sub>	58 <sup>1</sup> / <sub>2</sub>	41 <sup>1</sup> / <sub>2</sub>	39 <sup>1</sup> / <sub>2</sub>	13	45	84	20 <sup>3</sup> / <sub>4</sub>	22 <sup>1</sup> / <sub>2</sub>
	379 liters		927	1486	1054	1003	330	1143	2134	527	572
ET125	125 gal.	36	36 <sup>1</sup> / <sub>2</sub>	58 <sup>1</sup> / <sub>2</sub>	41 <sup>1</sup> / <sub>2</sub>	39 <sup>1</sup> / <sub>2</sub>	13	52	91	20 <sup>3</sup> / <sub>4</sub>	22 <sup>1</sup> / <sub>2</sub>
	473 liters		927	1486	1054	1003	330	1321	2311	527	572
ET150	150 gal.	36	36 <sup>1</sup> / <sub>2</sub>	58 <sup>1</sup> / <sub>2</sub>	41 <sup>1</sup> / <sub>2</sub>	39 <sup>1</sup> / <sub>2</sub>	13	58 <sup>1</sup> / <sub>2</sub>	97 <sup>1</sup> / <sub>2</sub>	20 <sup>3</sup> / <sub>4</sub>	22 <sup>1</sup> / <sub>2</sub>
	568 liters		927	1486	1054	1003	330	1486	2477	527	572

**NOTE:** In line with its policy to continually improve its products, Vulcan-Hart Company reserves the right to change materials and specifications without notice.

VULCAN-HART COMPANY, P.O. BOX 696, LOUISVILLE, KY 40201, TEL. 1-800-814-2028  
502-778-2791 QUOTE & ORDER FAX: 1-800-444-0602