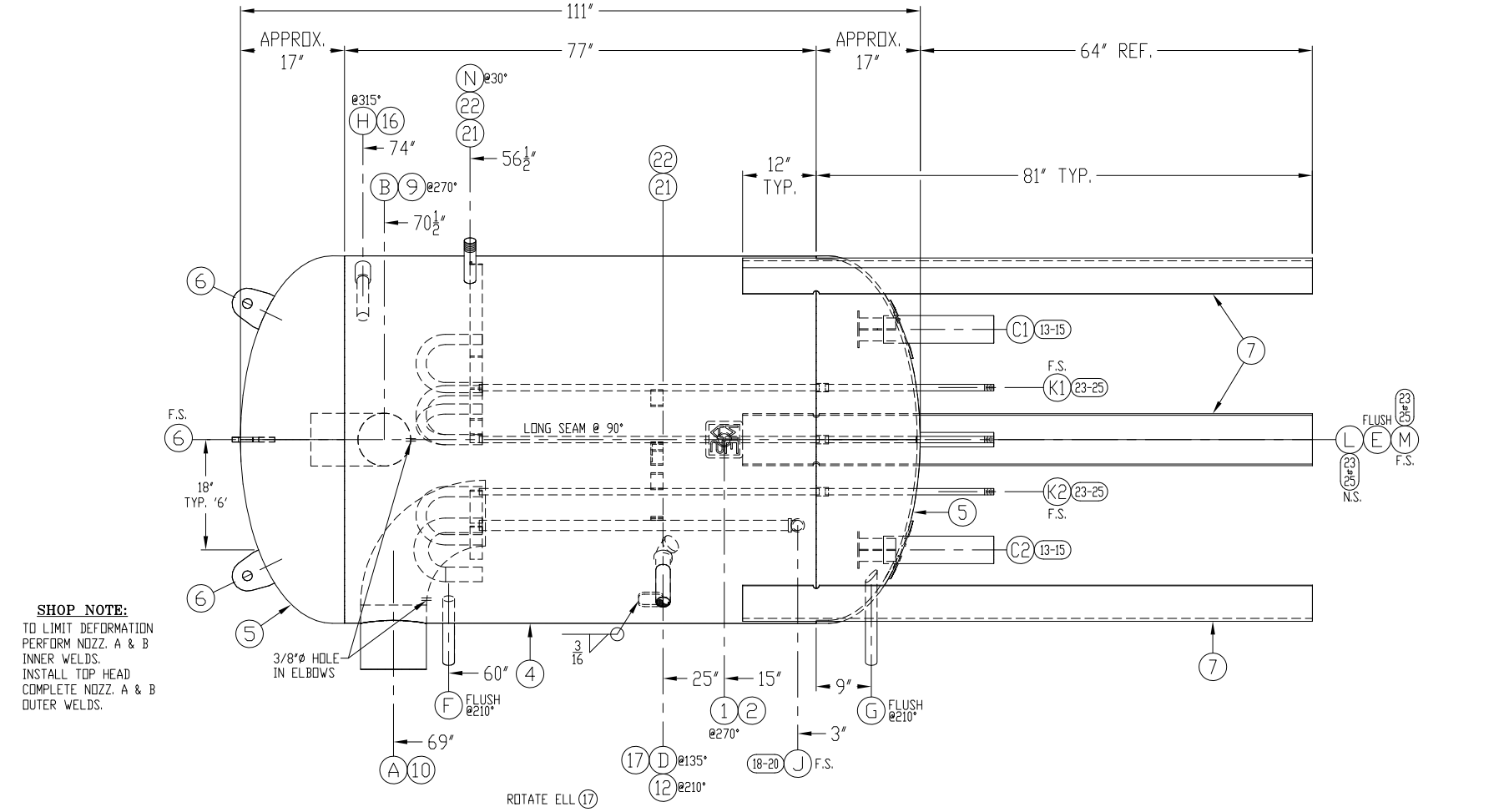
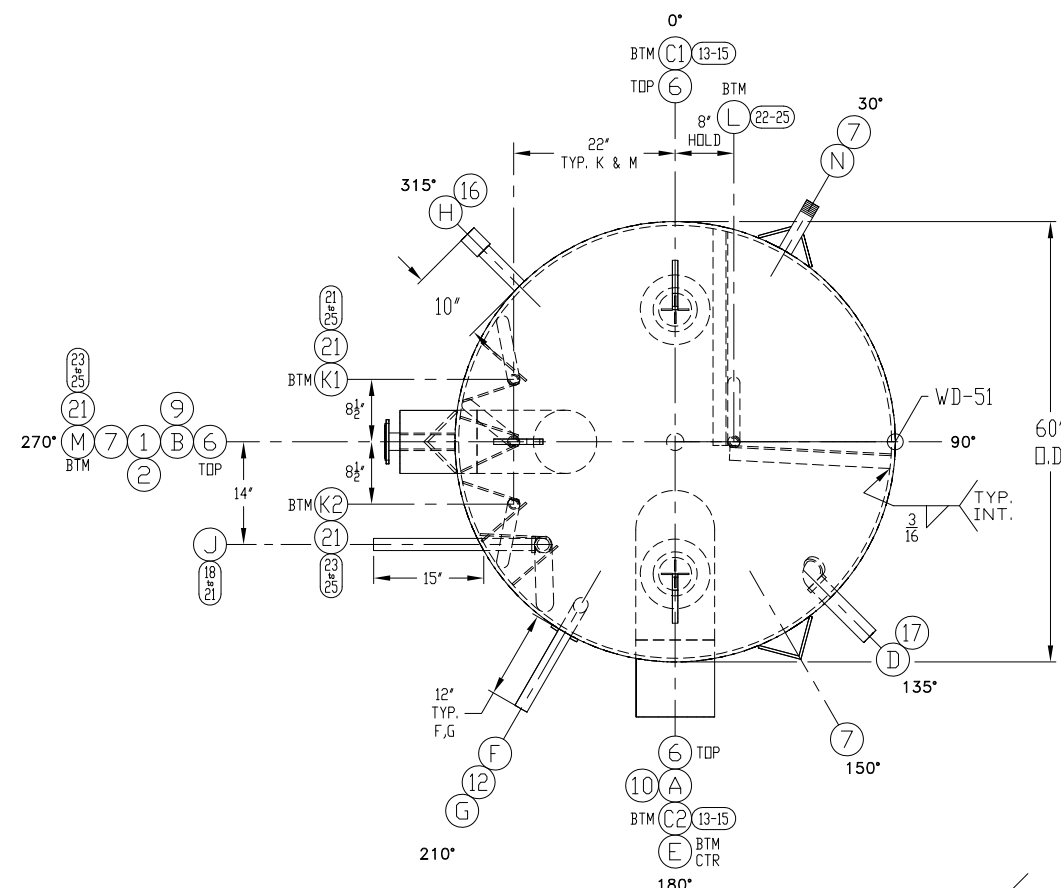
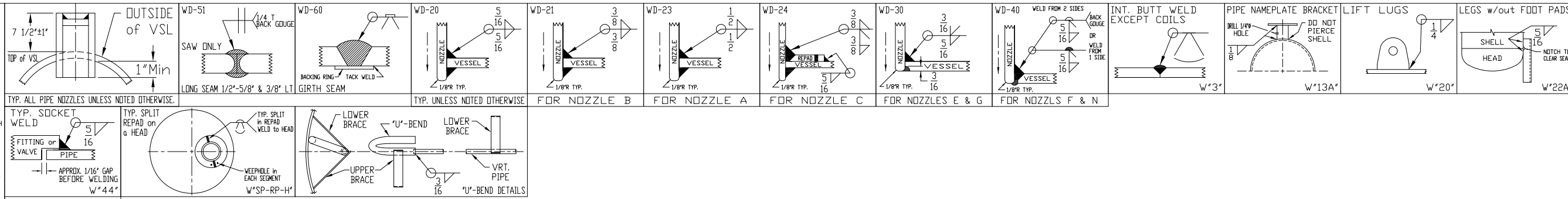
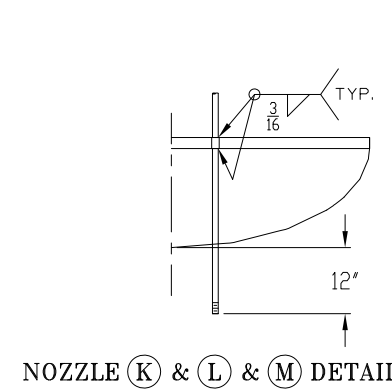
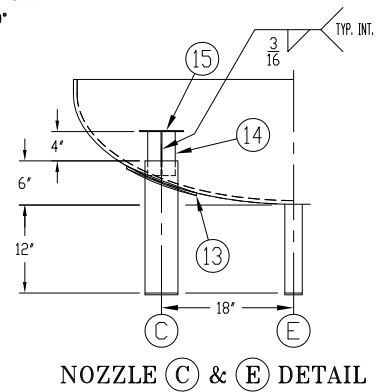


- GENERAL NOTES**
- 1) WELDING SHALL BE IN ACCORDANCE WITH WPS-1-1 (CARBON STL TO CARBON STL), WPS-1-8 (CARBON STL TO STAINLESS STL), WPS-B-8 (STAINLESS STL TO STAINLESS STL)
 - 2) FABRICATION TOLERANCES PER R.V.S. SHOP PROCEDURE NO. T-701.
 - 3) ALL WELDS SHALL MEET VISUAL ACCEPTANCE CRITERIA OF GAP-704.
 - 4) PRESSURE TESTING SHALL BE IN ACCORDANCE WITH GAP-701 OR GAP-702 AS APPLICABLE.
 - 5) EVACUATION TESTING AND NITROGEN CHARGE SHALL BE IN ACCORDANCE WITH GAP-707 AS APPLICABLE.
 - 6) COATING SHALL BE IN ACCORDANCE WITH MAP-606.
 - 7) BOLT TORQUES SHALL BE IN ACCORDANCE WITH MAP-608.
 - 8) SAS3B SMLS PIPE MAY BE SUBSTITUTED FOR SA106B SEAMLESS PIPE.
 - 9) SA516-70 PLATE MAY BE SUBSTITUTED FOR SA36 PLATE.
 - 10) ALL BOLT HOLES STRADDLE CENTERLINES.
 - 11) PADS & REPADS SHALL HAVE A 1/4" WEEPHOLES UNLESS OTHERWISE INDICATED ON THE DRAWING.



SHOP NOTE:
TO LIMIT DEFORMATION PERFORM NOZZ. A & B INNER WELDS. INSTALL TOP HEAD COMPLETE NOZZ. A & B OUTER WELDS.



ITEM	QTY	SIZE	DESCRIPTION	RATING	MATERIAL
26	4	1 1/4"	U-BEND	S/80	SA106B
24	4	3/4"	PIPE	S/80	SA106B
23	4	3/4"	S.W. CPLG.	3000#	SA105
22	1	2" x 2"	ANGLE (TRIM @ ASS'Y)	1/4"	SA36
21	1	2"	FLAT BAR (TRIM @ ASS'Y)	1/4"	SA36
20	1	2"	U-BEND PIPE	S/40	SA106B
19	1	1 1/4"	PIPE	S/80	SA106B
18	1	1 1/4"	S.W. 90° ELBOW	3000#	SA105
17	1	2"	S.W. 90° ELBOW	3000#	SA105

BILL of MATERIALS

ITEM	QTY	SIZE	TYPE	RATING	MATERIAL	SERVICE	LENGTH	ITEM	QTY	SIZE	TYPE	RATING	MATERIAL	LENGTH
16	1	1 1/2" x 1 1/4"	SHELL		S/80			17	1	2"	SHELL		S/80	
15	2	6" O.D.	HEADS		SA105			15	2	6" O.D.	HEADS		SA105	
14	4	3 3/4" x 6"	PLATE		SA36			14	4	3 3/4" x 6"	PLATE		SA36	
13	2	CUSTOM	PLATE (VDRTEX)		SA36			13	2	CUSTOM	PLATE (VDRTEX)		SA36	
12	1	4" x 4"	PLATE (NOTE #11)		SA36			12	1	4" x 4"	PLATE (NOTE #11)		SA36	
11	1	2 1/2" MIN. WIDE PLATE	PLATE (NOTE #11)		SA36			11	1	2 1/2" MIN. WIDE PLATE	PLATE (NOTE #11)		SA36	
10	1	10"	B.W. 90° ELBOW (#8)		SA234-WPB			10	1	10"	B.W. 90° ELBOW (#8)		SA234-WPB	
9	1	8"	B.W. 90° ELBOW (#5)		SA234-WPB			9	1	8"	B.W. 90° ELBOW (#5)		SA234-WPB	
8	3	6" x 6"	ANGLE (#16 #ea.)		SA36			8	3	6" x 6"	ANGLE (#16 #ea.)		SA36	
7	3	6" x 6"	STD. LIFT LUG		SA36			7	3	6" x 6"	STD. LIFT LUG		SA36	
6	3	6"	2-1 ELLIP. HEAD (#677 #ea.)		SA516-70			6	3	6"	2-1 ELLIP. HEAD (#677 #ea.)		SA516-70	
5	2	60" O.D.	ROLLED SHELL (#2,034 #)		SA516-70			5	2	60" O.D.	ROLLED SHELL (#2,034 #)		SA516-70	
4	1	60" O.D.	BACKING STRIP		SA36			4	1	60" O.D.	BACKING STRIP		SA36	
3	2	1 1/2"	WELDED PIPE w/ 1/4" WEEPHOLE		S/40S			3	2	1 1/2"	WELDED PIPE w/ 1/4" WEEPHOLE		S/40S	
2	1	2"	PLATE (NAMEPLATE BRKT)		304 S/S			2	1	2"	PLATE (NAMEPLATE BRKT)		304 S/S	
1	1	6" x 6"	PLATE (NAMEPLATE BRKT)		304 S/S			1	1	6" x 6"	PLATE (NAMEPLATE BRKT)		304 S/S	

CERTIFIED BY
REFRIGERATION VALVES and SYSTEMS CORPORATION
BRYAN, TEXAS

U
W
RT3

MAMP 250 PSI AT 300 °F
MAMP XXXX PSI AT XXX °F
MDMT -20 °F AT 250 PSI
-50 °F AT 85 PSI

S/N 51653 YEAR 2016

SHELL THK HEAD THK U.S. GAL. SQ.FT. SURF.
in in

TEST WITH WATER

HYDRO NOTES:
1) ESTIMATED VOLUME: 1,236 GALLONS.
2) TEST WITH NOZZLE ON BOTTOM.

RVS PROJECT No.: 86333 EVAPCO S/N: 16-796197

0 09-14-16 EL RELEASED FOR FABRICATION DS 09-15-16

Rev. DATE / BY DESCRIPTION CHK'D / DATE

ESTIMATED WIDTH: 72" HEIGHT: 76"
SHIPPING DIMENSIONS LENGTH: 14'-9" DRY WEIGHT: 6,150 LBS

CUSTOMER STERLING INDUSTRIAL REFRIGERATION P.O. 1622-002

VESSEL DESIGN SPECIFICATIONS
DESIGN & CONSTRUCTION IN ACCORDANCE WITH SECTION VIII DIV. 1 ASME CODE FOR PRESSURE VESSELS 2015 EDITION & ADDENDA TO ---

SHELL: t= .439" CA: 0
HEADS: t= .435" 4375' MIN. AFTER FORMING CA: 0
M.A.W.P.: 250 P.S.I. HYDROSTATIC TEST: 325 P.S.I.
-20° to +300 °F To DUAL STAMP 85 PSI @ -50 °F
RT: LONG SPOT / GIRTH: NONE HT: NONE
PAINT: SANDBLAST SSPC-SP6, RVS HYPER BLUE PRIMER

TITLE
60" O.D. x 111" 250# ASME VRT. MRP-60 RECIRCULATOR

DRAWN EDDIE 09-09-16
CHK'D DS 09-15-16 S/N: 51653

REFRIGERATION VALVES and SYSTEMS CORPORATION
A WHOLLY OWNED SUBSIDIARY OF EVAPCO INC.

RVS
PACKAGED VESSEL SYSTEMS and CONTROLS
1520 CROSSWIND DRIVE, BRYAN, TX. 77808

DWG No. 51653D REV. 0

CERTIFIED

SERVER:DWG ARCHIVE\51000\51600-51699