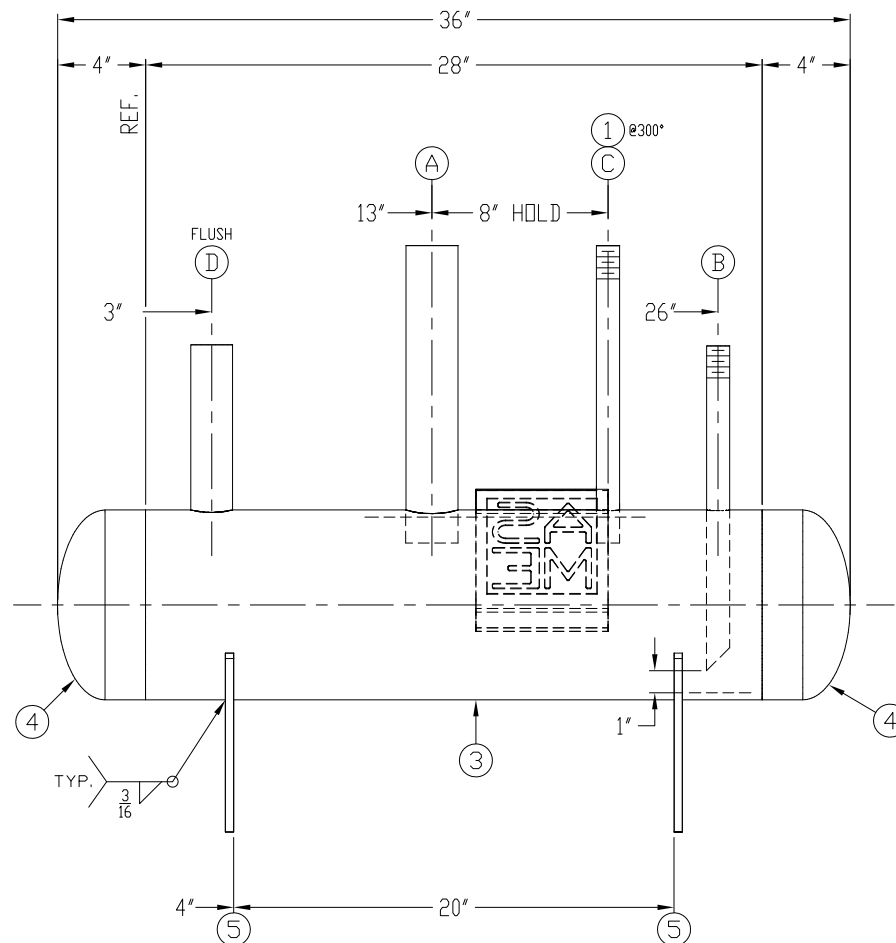
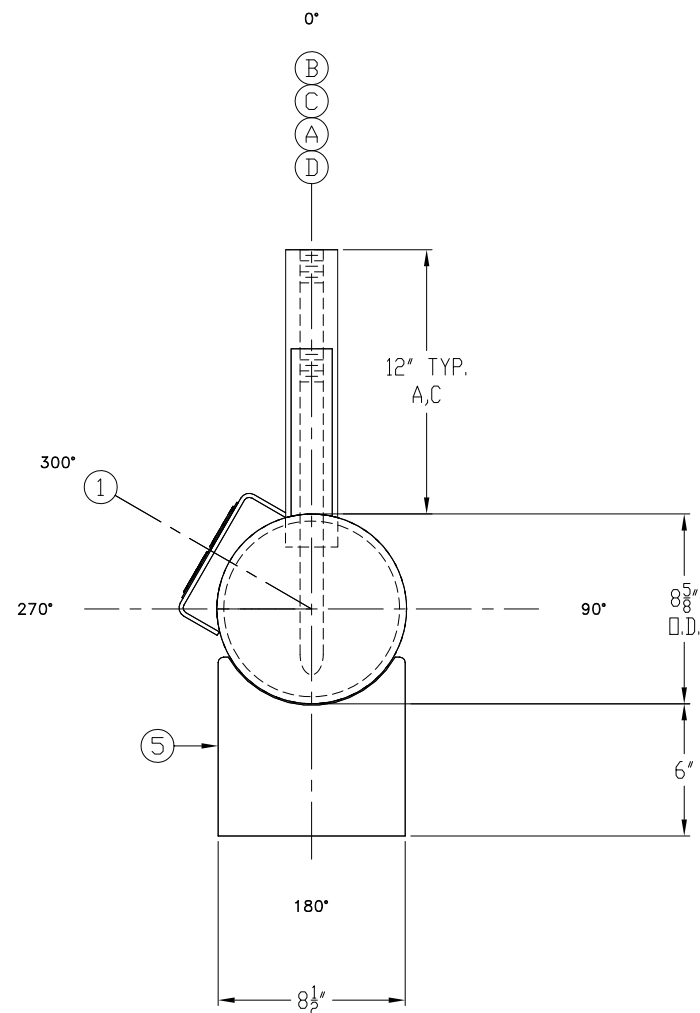
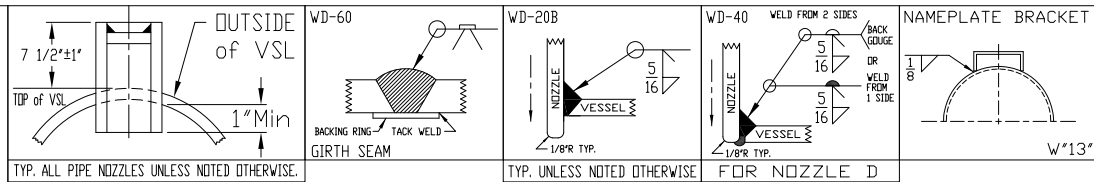


- GENERAL NOTES**
- 1) WELDING SHALL BE IN ACCORDANCE WITH WPS-1-1 (CARBON STL TO CARBON STL), WPS-1-8 (CARBON STL TO STAINLESS STL), WPS-8-8 (STAINLESS STL TO STAINLESS STL).
  - 2) FABRICATION TOLERANCES PER R.V.S. SHOP PROCEDURE No. T-701.
  - 3) ALL WELDS SHALL MEET VISUAL ACCEPTANCE CRITERIA OF QAP-704.
  - 4) PRESSURE TESTING SHALL BE IN ACCORDANCE WITH QAP-701 OR QAP-702 AS APPLICABLE.
  - 5) EVACUATION TESTING AND NITROGEN CHARGE SHALL BE IN ACCORDANCE WITH QAP-707 AS APPLICABLE.
  - 6) COATING SHALL BE IN ACCORDANCE WITH MAP-606.
  - 7) BOLT TORQUES SHALL BE IN ACCORDANCE WITH MAP-608.
  - 8) SA53B SMLS PIPE MAY BE SUBSTITUTED FOR SA106B SEAMLESS PIPE.
  - 9) SA516-70 PLATE MAY BE SUBSTITUTED FOR SA36 PLATE.
  - 10) ALL BOLT HOLES STRADDLE CENTERLINES.
  - 11) PADS & REPADS SHALL HAVE A 1/4" Ø WEEP HOLES UNLESS OTHERWISE INDICATED ON THE DRAWING.



**CERTIFIED**

RVS PROJECT No.: 86333 | EVAPCO S/N: 16-796197

0 09-14-16 EL RELEASED FOR FABRICATION DS 09-15-16  
Rev. DATE / BY DESCRIPTION CHK'D / DATE

ESTIMATED WIDTH: 12' HEIGHT: 29'  
SHIPPING DIMENSIONS LENGTH: 3'-0" DRY WEIGHT: 141 LBS

CUSTOMER STERLING INDUSTRIAL REFRIGERATION P.O. 1622-002

**VESSEL DESIGN SPECIFICATIONS**  
DESIGN & CONSTRUCTION IN ACCORDANCE WITH SECTION VIII DIV. 1 ASME CODE FOR PRESSURE VESSELS 2015 EDITION & ADDENDA TO -- --  
SHELL: t = .117" CA: 0  
HEADS: t = .116" 2818" MIN. AFTER FORMING CA: 0  
M.A.W.P.: 400 P.S.I. HYDROSTATIC TEST: 520 P.S.I.  
RT: LONG: NONE / GIRTH: NONE HT: NONE  
PAINT: SANDBLAST SSPC-SP6, RVS HYPER BLUE PRIMER

REFRIGERATION VALVES and SYSTEMS CORPORATION  
A WHOLLY OWNED SUBSIDIARY OF EVAPCO INC.



PACKAGED VESSEL SYSTEMS and CONTROLS  
1520 CROSSWIND DRIVE, BRYAN, TX. 77808

TITLE  
8 5/8" O.D. x 36" 400# ASME HRZ. MRP/MVI OIL POT  
DRAWN EDDIE 09-07-16 D. SIZED 3"=1'-0"  
CHK'D DS 09-15-16 S/N: 51654, 51656

DWG No. 51654 REV. 0

SERIAL No. 51654  
NAT'L BOARD No. 51656

CERTIFIED BY  
REFRIGERATION VALVES and SYSTEMS CORPORATION  
BRYAN, TEXAS

M.A.W.P. 400 PSI AT 300 °F  
M.A.W.P. XXX PSI AT XXX °F  
M.D.M.T. -50 °F AT 400 PSI

S/N SEE CHART YEAR 2016

SHELL THK HEAD THK U.S. GAL. SQ.FT. SURF.  
in in

**TEST WITH WATER**

**HYDRO NOTES:**  
1) ESTIMATED VOLUME: 7.9 GALLONS.  
2) TEST WITH NOZZLE ON BOTTOM.

**BILL of MATERIALS**

NOZZLE SCHEDULE										SHELL, HEADS, INTERNALS, & SUPPORTS									
ITEM	QTY	SIZE	TYPE	RATING	MATERIAL	SERVICE	LENGTH	ITEM	QTY	SIZE	TYPE	RATING	MATERIAL	SERVICE	LENGTH				
R								16											
Q								15											
P								14											
N								13											
M								12											
L								11											
K								10											
J								9											
H								8											
G								7											
F								6											
E								5	2	8 1/2" x 8 1/8"	PLATE (P/N 1966)	3/8"	SA36						
D	1	1 1/2"	PIPE	S/80	SA106B	RELIEF	9"	4	2	8"	B.W. PIPE CAP (12 #ea.)	S/40	SA234-WPB						
C	1	3/4"	PIPE (T.O.E.)	S/80	SA106B	VENT	13 1/2"	3	1	8"	PIPE SHELL (68 #)	S/40	SA106B	28"					
B	1	3/4"	PIPE (T.O.E.)	S/80	SA106B	OUTLET (M-1-45°)	14 3/4"	2	2	8"	BACKING RING	3/32"	SA414						
A	1	2"	PIPE	S/80	SA106B	INLET	13 1/2"	1	1	2" TALL	STD. NAMEPLATE BRACKET	3/16"	SA36	6"					