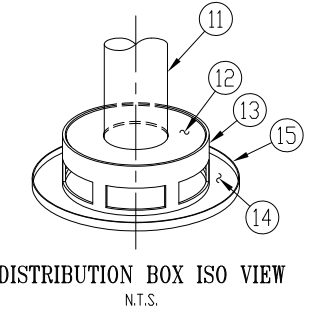
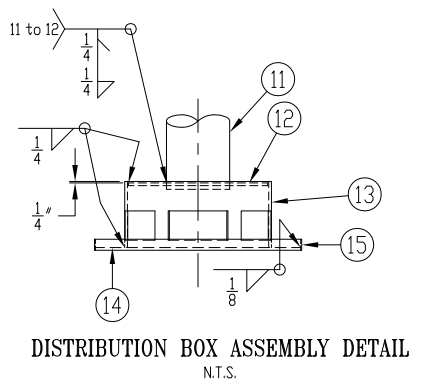
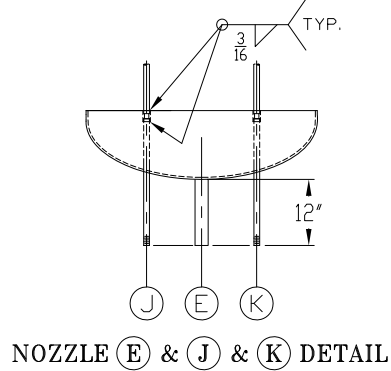
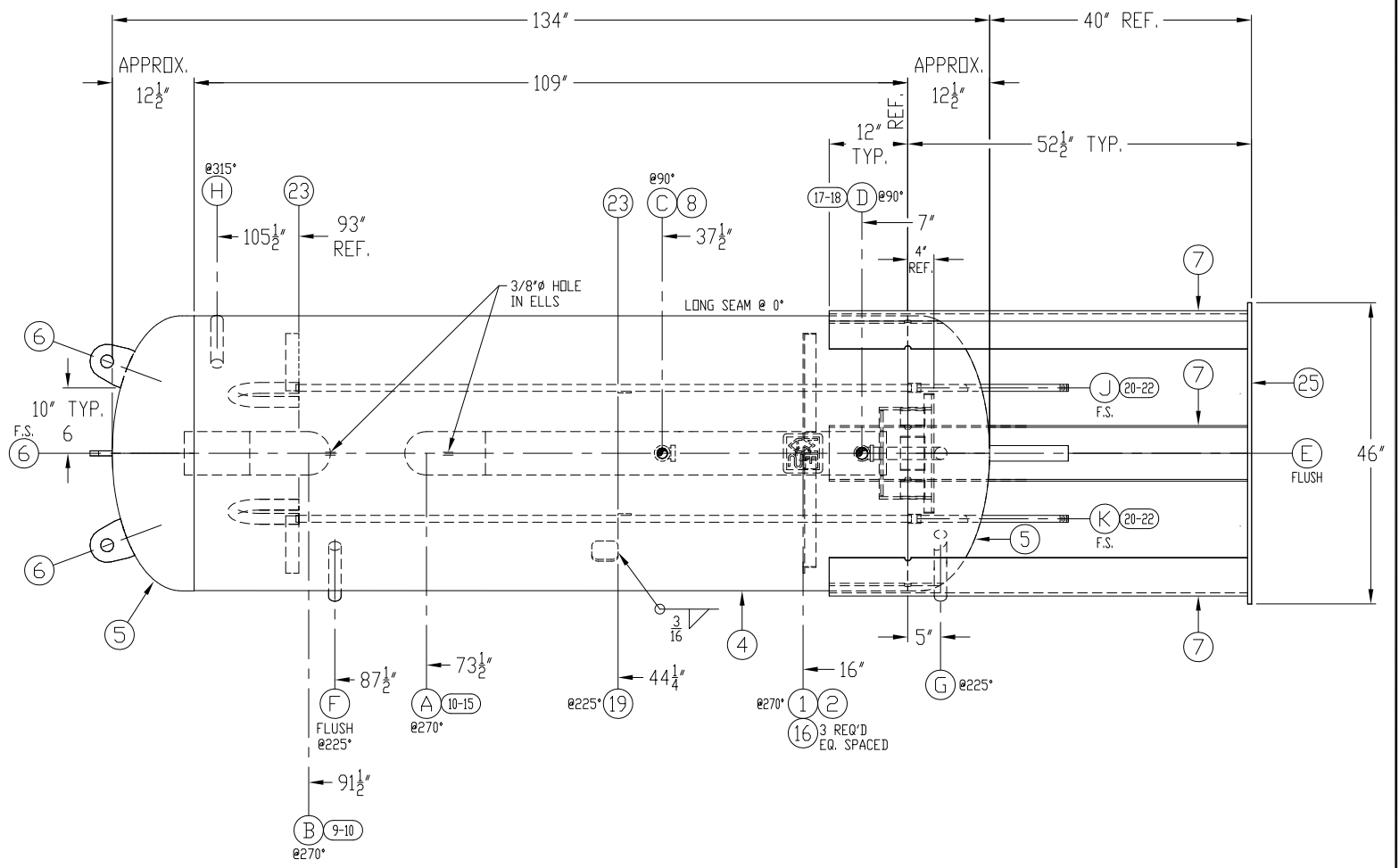
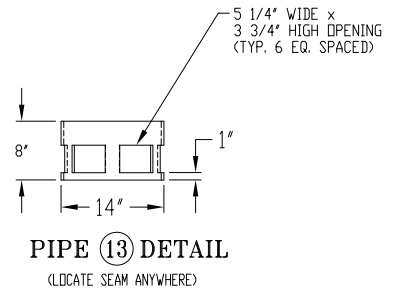
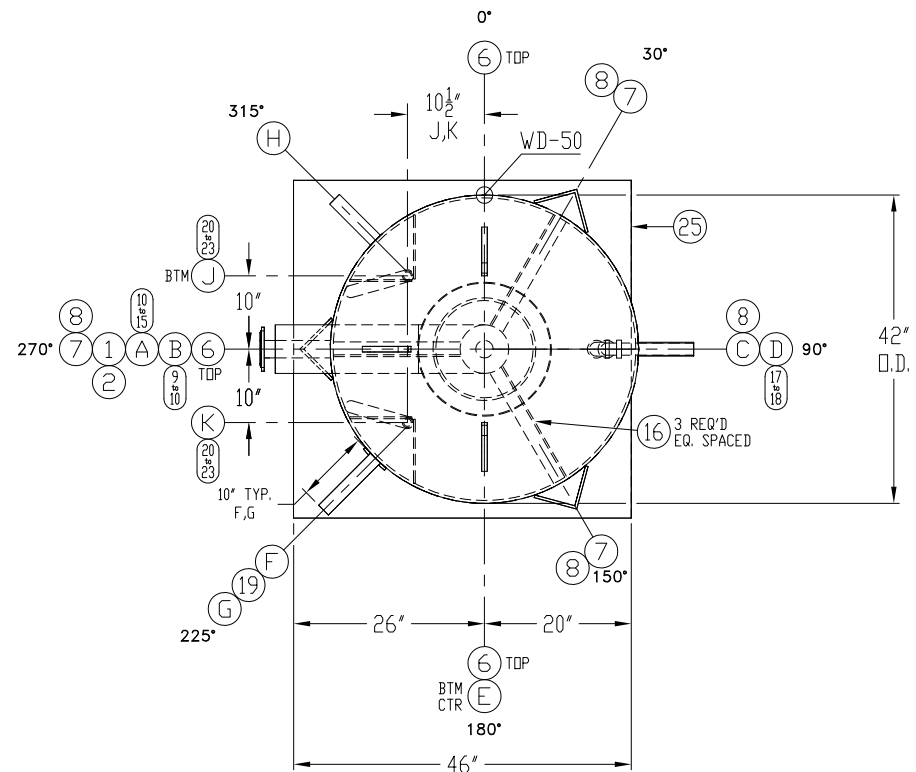
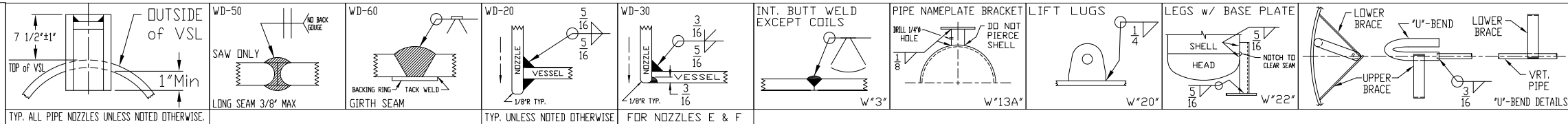


- GENERAL NOTES**
- WELDING SHALL BE IN ACCORDANCE WITH WPS-1-1 (CARBON STL TO CARBON STL), WPS-1-8 (CARBON STL TO STAINLESS STL), WPS-8-8 (STAINLESS STL TO STAINLESS STL).
 - FABRICATION TOLERANCES PER R.V.S. SHOP PROCEDURE No. T-701.
 - ALL WELDS SHALL MEET VISUAL ACCEPTANCE CRITERIA OF QAP-704.
 - PRESSURE TESTING SHALL BE IN ACCORDANCE WITH QAP-701 OR QAP-702 AS APPLICABLE.
 - EVACUATION TESTING AND NITROGEN CHARGE SHALL BE IN ACCORDANCE WITH QAP-707 AS APPLICABLE.
 - COATING SHALL BE IN ACCORDANCE WITH MAP-606.
 - BOLT TORQUES SHALL BE IN ACCORDANCE WITH MAP-608.
 - SAS3B SMLS PIPE MAY BE SUBSTITUTED FOR SA106B SEAMLESS PIPE.
 - SAS16-70 PLATE MAY BE SUBSTITUTED FOR SA36 PLATE.
 - ALL BOLT HOLES STRADDLE CENTERLINES.
 - PADS & REPADS SHALL HAVE A 1/4" Ø WEEPHOLES UNLESS OTHERWISE INDICATED ON THE DRAWING.



ITEM	QTY	SIZE	RATING	MATERIAL	SERVICE	LENGTH	ITEM	QTY	SIZE	RATING	MATERIAL	LENGTH
26	1	46" x 46"		PLATE (375 #)		5/8"	SA36					
24	1	1 1/2"		S.W. 90° ELBOW		3000#	SA105					
23	4	2"		FLAT BAR		1/4"	SA36				9"	
22	2	1 1/4"		U-BEND PIPE		S/80	SA106B					
21	2	3/4"		PIPE		S/80	SA106B				94"	
20	2	3/4"		S.W. CPLG		3000#	SA105					
19	1	4" x 4"		PLATE (NOTE #11)		3/8"	SA36					
18	1	1 1/2"		PIPE (M-1-45")		S/80	SA106B				11 3/4"	
17	1	1 1/2"		S.W. 90° ELBOW		3000#	SA105					

RVS PROJECT No.:	86333	EVAPCO S/N:	16-796390
Rev. DATE / BY	09-14-16 EL	DESCRIPTION	RELEASED FOR FABRICATION
CHK'D / DATE	DS 09-16-16		
ESTIMATED SHIPPING DIMENSIONS	WIDTH: 52"	HEIGHT: 60"	LENGTH: 196"
			DRY WEIGHT: 2,985 LBS

CERTIFIED BY
REFRIGERATION VALVES and SYSTEMS CORPORATION
BRYAN, TEXAS

U
W
RT3

MAMP 250 PSI AT 300 °F
MAMP XXX PSI AT XXX °F
MDMT -20 °F AT 250 PSI

S/N 51655 YEAR 2016

SHELL THK HEAD THK U.S. GAL. SQ.FT. SURF.

TEST WITH WATER

HYDRO NOTES:
1) ESTIMATED VOLUME: 732 GALLONS.
2) TEST WITH NOZZLE ON BOTTOM.

ITEM	QTY	SIZE	TYPE	RATING	MATERIAL	SERVICE	LENGTH
R							
Q							
P							
N							
M							
L	1	3/4"	PIPE (T.O.E.)	S/80	SA106B	OIL POT RELIEF	23"
K	1	3/4"	PIPE (T.O.E.)	S/80	SA106B	OIL POT VENT	23"
J	1	1 1/2"	PIPE	S/80	SA106B	RELIEF	9"
H	1	1 1/2"	PIPE	S/80	SA106B	BTM COLUMN CONN	13 1/2"
G	1	1 1/2"	PIPE	S/80	SA106B	TOP COLUMN CONN	11"
F	1	2"	PIPE	S/80	SA106B	DRAIN	13"
E	1	1 1/2"	PIPE	S/80	SA106B	LIQUID OUTLET	12"
D	1	1 1/4"	PIPE	S/80	SA106B	LIQUID MAKE-UP	10 1/2"
C	1	6"	PIPE	S/40	SA106B	SUCTION OUTLET	9"
B	1	6"	PIPE	S/40	SA106B	BOOSTER DISCHARGE INLET	19 1/2"
A	1	6"	PIPE	S/40	SA106B		

BILL of MATERIALS

ITEM	QTY	SIZE	RATING	MATERIAL	LENGTH
16	3	2" x 2"		ANGLE	1/4"
15	1	1 1/2"		BACKING STRIP	1/8"
14	1	18"Ø		PLATE	3/8"
13	1	14"		PIPE (SEE DETAIL)	S/STD (3/8")
12	1	13" OD x 6 7/8" ID		PIPE (SEE DETAIL)	S/STD (3/8")
11	1	6"		PIPE (C97 #)	S/40
10	2	6"		B.W. 90° ELBOW	S/40
9	1	6"		PIPE	S/40
8	1	1 1/4"		S.W. 90° ELBOW	3000#
7	3	6" x 6"		ANGLE (Ø2 #eo.)	3/8"
6	3	6"		STD. LIFT LUG	3/4"
5	2	42" O.D.		2-1 ELLIP. HEAD (257 #eo.)	3/8"
4	1	42" O.D.		ROLLED SHELL (1,517 #)	3/8"
3	2	1 1/2"		BACKING STRIP	1/8"
2	1	2"		WELDED PIPE w/ 1/4"Ø WEEP HOLE	S/40S
1	1	6" x 6"		PLATE (NAMEPLATE BRKT)	3/8"

CUSTOMER STERLING INDUSTRIAL REFRIGERATION, INC. P.O. 1622-002

VESSEL DESIGN SPECIFICATIONS
DESIGN & CONSTRUCTION IN ACCORDANCE WITH SECTION VIII DIV. 1 ASME CODE FOR PRESSURE VESSELS 2015 EDITION & ADDENDA TO ---

SHELL: t = .307"
HEADS: t = .305" 3125' MIN. AFTER FORMING CA: 0
M.A.W.P.: 250 P.S.I. HYDROSTATIC TEST: 325 P.S.I.
RT: LONG SPOT/ GIRTH NONE HT: NONE
PAINT: SANDBLAST SSPC-SP6, RVS HYPER BLUE PRIMER

TITLE 42" O.D. x 134" 250# ASME VRT. INTERCOOLER

DRAWN EDDIE 09-13-16
BY: DS 09-16-16
S/N: 51655

REFRIGERATION VALVES and SYSTEMS CORPORATION
A WHOLLY OWNED SUBSIDIARY OF EVAPCO INC.

PACKAGED VESSEL SYSTEMS and CONTROLS
1520 CROSSWIND DRIVE, BRYAN, TX. 77808

DWG No. 51655D
REV. 0

CERTIFIED

SERVER\DWG ARCHIVE\51000\51600-51699