

## GC Industries Icewagon Water-Cooled Liquid Chiller- 3.5 Ton

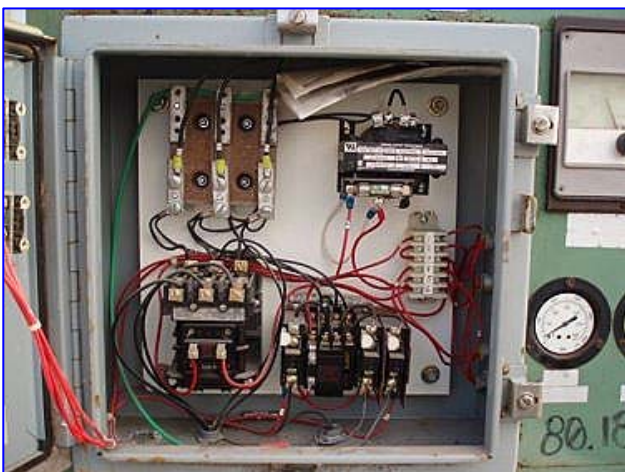
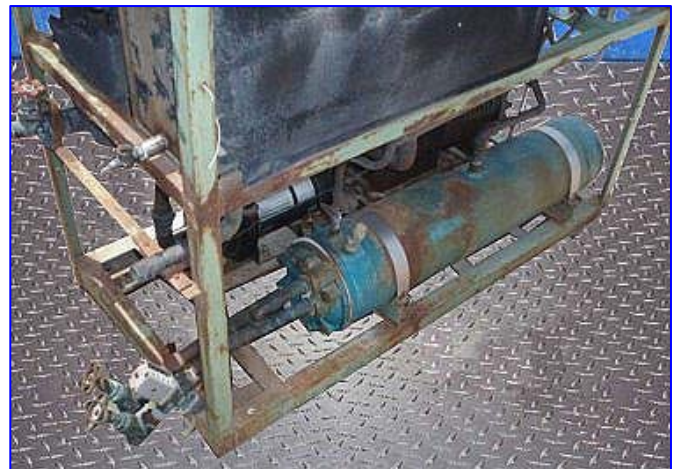
Mfg: GC Industries

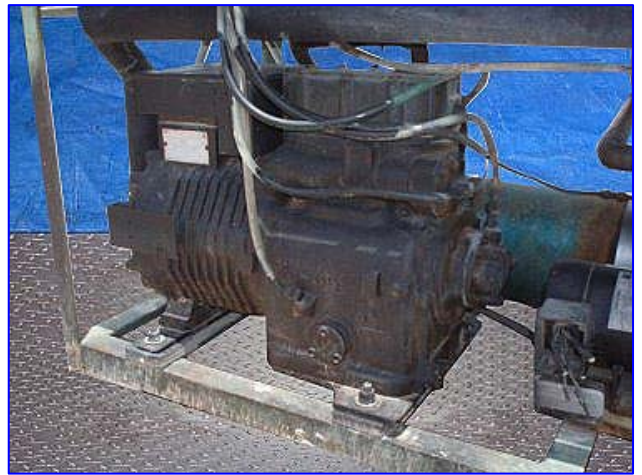
Model:

Stock No.: 80.185

Serial No.: WCLT100840621

GC Industries Icewagon™ Water-Cooled Liquid Chiller- 6 Ton. S/N: WCLT100840621. Nominal tons: 6. Nominal flow rate: 15 gpm. Refrigerant: R-502. Power supply: 460 V, 60 Hz, 3 phase. Dunham-Bush Chiller Barrel, Model: SCC832. S/N: 0420784. Copeland Copelamatic Discus Rotary Screw Compressor, Model: 9DS1-1000-TDF, S/N: CT84H09812, low temperature, capacity: 42,200 Btuh, power supply: 460 V, 60 Hz, 3 phase. Teel Centrifugal Pump, Model: 4RJ75. Inlets: (2) 1 in. dia. NPT copper fittings. Outlets: (2) 1 in. dia. FNPT copper fittings. Overall dimensions: 5 ft. 3 in. L x 2 ft. 2 in. W x 4 ft. 11 in. H.





NO. DESCRIPTION

GC INDUSTRIES

290,460,550-3PH

115V INHERENT COMP

5HP LARGER ICEWAGON

84 DIV. A.W. 5-23-83 021-B

SERIAL NO. WCLT100840621

VOLTS 460 PHASE 3 CYCLES 60

USE FREON 502

**GC INDUSTRIES inc.**

Wilmington, DE 19805

**UL** UNDERWRITERS LABORATORIES LISTED INC.®

INDUSTRIAL CONTROL PANEL ENCLOSURE

**NO. E-809856**

*Hoffman*

HOFFMAN ENGINEERING COMPANY  
DIVISION OF FEDERAL CARTRIDGE CORP.  
ANOKA, MINNESOTA

SERIAL NO. WCLT100840621

VOLTS 460 PHASE 3 CYCLES 60

USE FREON 502

**TYPE 4 ENCLOSURE**

USE ONLY THE FOLLOWING WATERTIGHT CONDUIT HUBS FOR CONNECTING CONDUIT TO THIS ENCLOSURE:

MYERS ELECTRIC PRODUCTS INC. CAT. NO. ST-1, ST-2, ST-3, ST-4, ST-5, ST-6, ST-7, ST-8, ST-9, ST-10, ST-11, AND ST-12