



MATERIALS TRANSPORTATION COMPANY™

SINCE 1946

An Employee Owned Company

ENGINEERS/DESIGNERS/MANUFACTURERS

P.O. Box 1358 • Temple, Texas 76503-1358 • Telephone (254) 298-2900
Toll Free (800) 433-3110 • Fax (254) 771-0287
www.MTCworldwide.com

OPERATION AND MAINTENANCE MANUAL

MTC MODEL MTCC-36-15

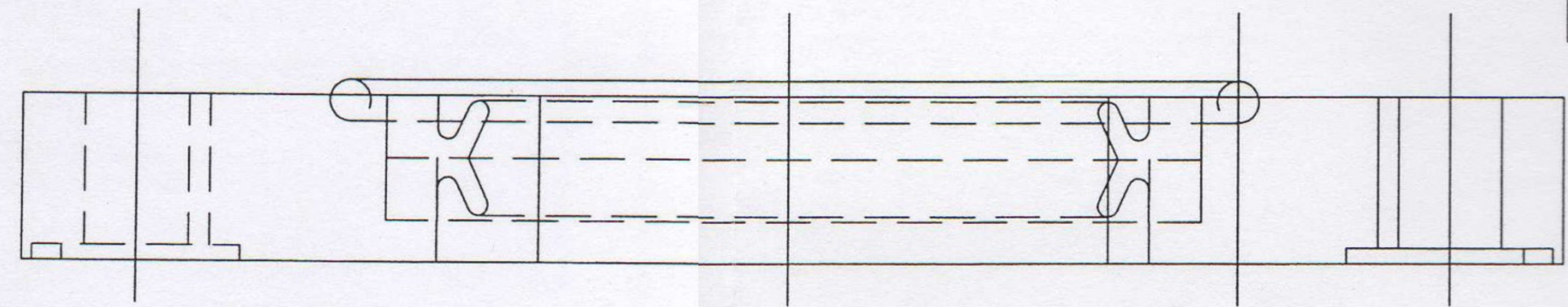
CONTINUOUS COOKER

MICHAEL ANGELO'S MTC # F060900-002

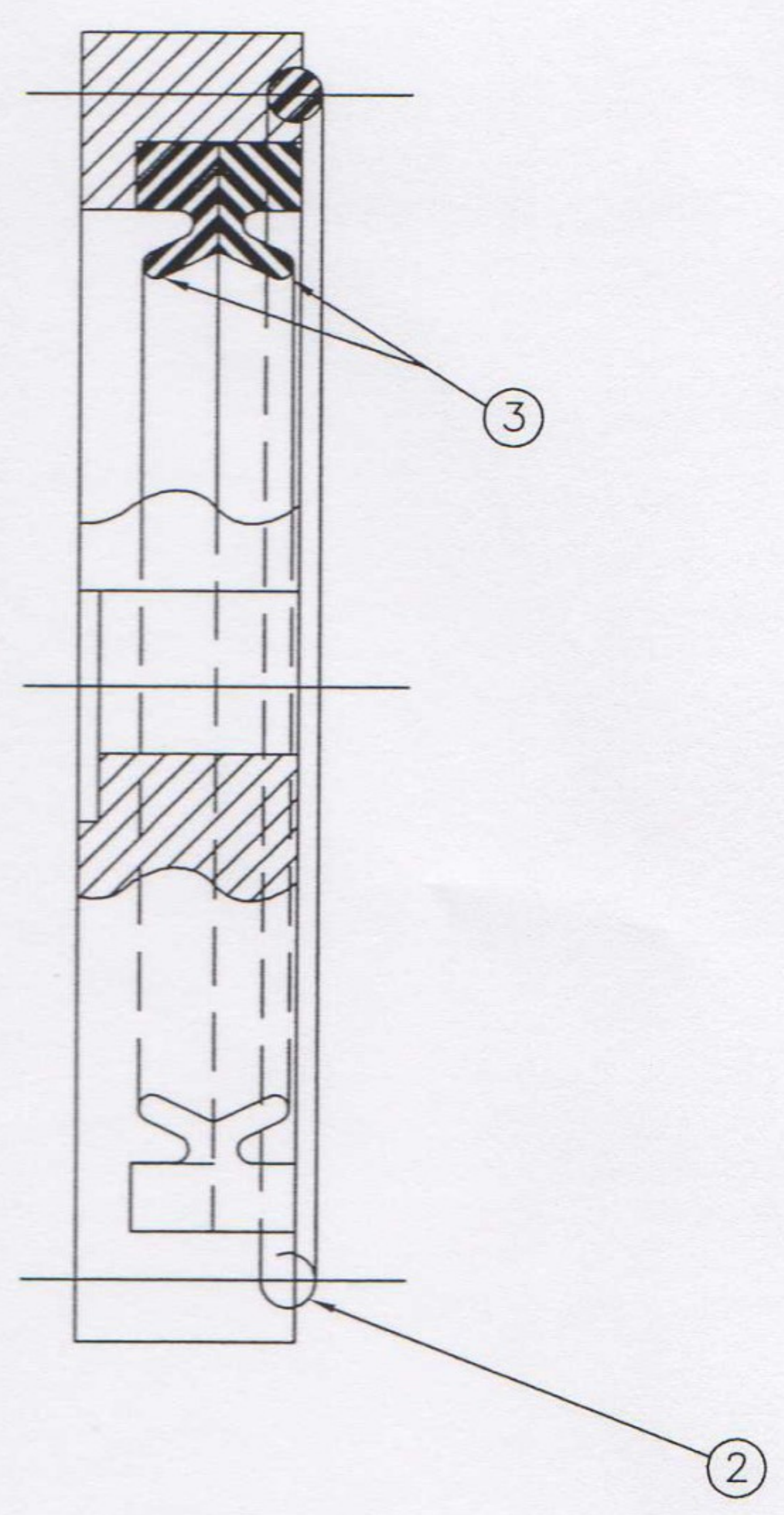
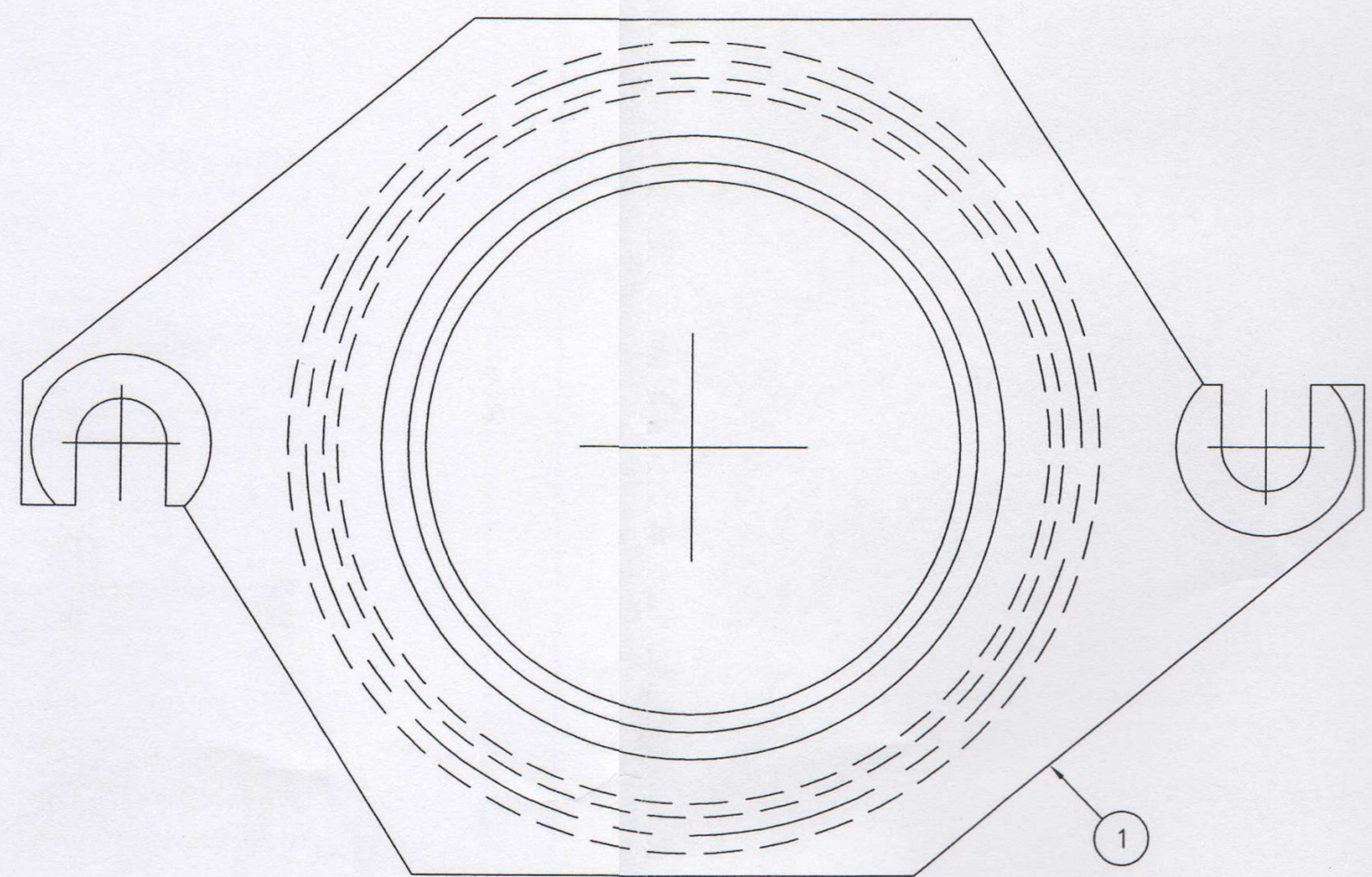
P.O. # 209367

S/N 7315

ITEM	DWG. NO.	DESCRIPTION	U/R/EA.	UOM	QTY	STOCK NO.
1		PLATE, SS304, 1IN, 48X96	.39	SF	1	SS1-4X8
2		O-RING, SILICON, PARKER	2-355-5604-70	EA	1	9-0003-222
3		SEAL, CAPSULATED, SPRING, 5" GARLOCK	25284X9298	EA	2	11-0004-020



5



REV. 5 REVISED PER RDC# 4203 DS 3/5/99 CMH 3-10-99		UNLESS OTHERWISE SPEC'D: TOLERANCES .XX = ±.010 XXX = ± .003 ANGULAR = ± 0°30' FRACTIONAL MACH'D ± 1/64 SAW, SHEAR ± 1/16 BURN, WELD ± 1/8 FINISH 125 ✓ MATERIAL STAINLESS STEEL FINISH	CUSTOMER CUST. ORDER # SERIAL NO. MTC ORDER #		MTC MATERIALS TRANSPORTATION CO. 1408 COMMERCE DR. P.O. BOX 1358 TEMPLE, TEXAS 76503	
REV. 4 REVISED PER RDC# 3667 DS 6/29/98 CMH 9-4-98			DRAWN LSW 7/31/86 CHECKED TJ 7/28/87 APPROVED		TITLE MTB-MTBV, SEAL ASSY(3,000# TO 12,000#)	
REV. 3 REVISED PER RDC# 3053 LSW 8-19-97 IRVW 8/22/97			SCALE FULL		DRAWING NUMBER B3466	
REV. 2 REVISED PER RDC# 2714 AP 2/17/97 MY 2/18/97			SHEET OF 1 2		REVISION# 5	
			NEXT ASSY.		DRAWER 9	



This Drawing is the property of
MATERIALS TRANSPORTATION COMPANY
 and shall not be reproduced, copied,
 lent, or disposed of, nor used for any
 purpose other than for which it is
 specifically furnished and must be
 returned upon demand.

GENERAL INFORMATION:

MTCC-36-15, CONTINUOUS COOKER

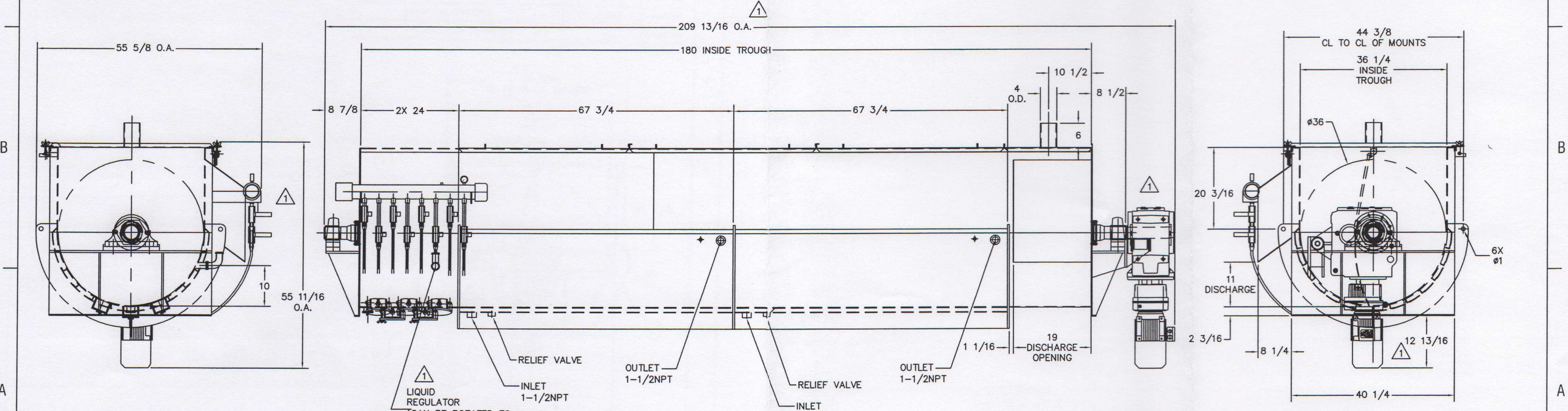
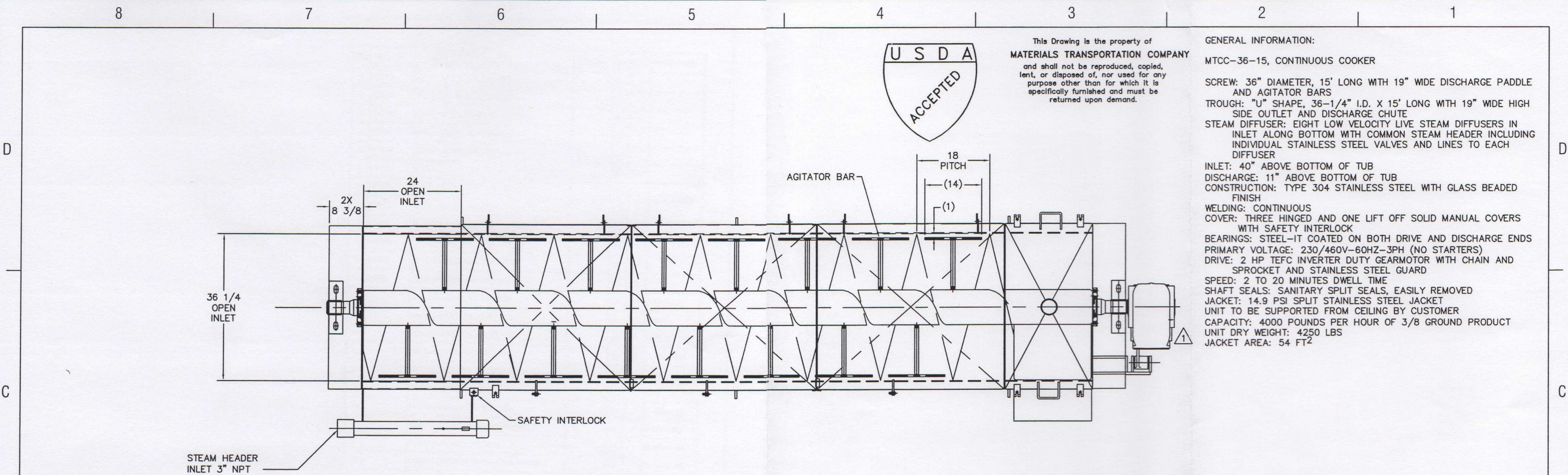
SCREW: 36" DIAMETER, 15' LONG WITH 19" WIDE DISCHARGE PADDLE AND AGITATOR BARS
 TROUGH: "U" SHAPE, 36-1/4" I.D. X 15' LONG WITH 19" WIDE HIGH SIDE OUTLET AND DISCHARGE CHUTE
 STEAM DIFFUSER: EIGHT LOW VELOCITY LIVE STEAM DIFFUSERS IN INLET ALONG BOTTOM WITH COMMON STEAM HEADER INCLUDING INDIVIDUAL STAINLESS STEEL VALVES AND LINES TO EACH DIFFUSER

INLET: 40" ABOVE BOTTOM OF TUB
 DISCHARGE: 11" ABOVE BOTTOM OF TUB
 CONSTRUCTION: TYPE 304 STAINLESS STEEL WITH GLASS BEADED FINISH

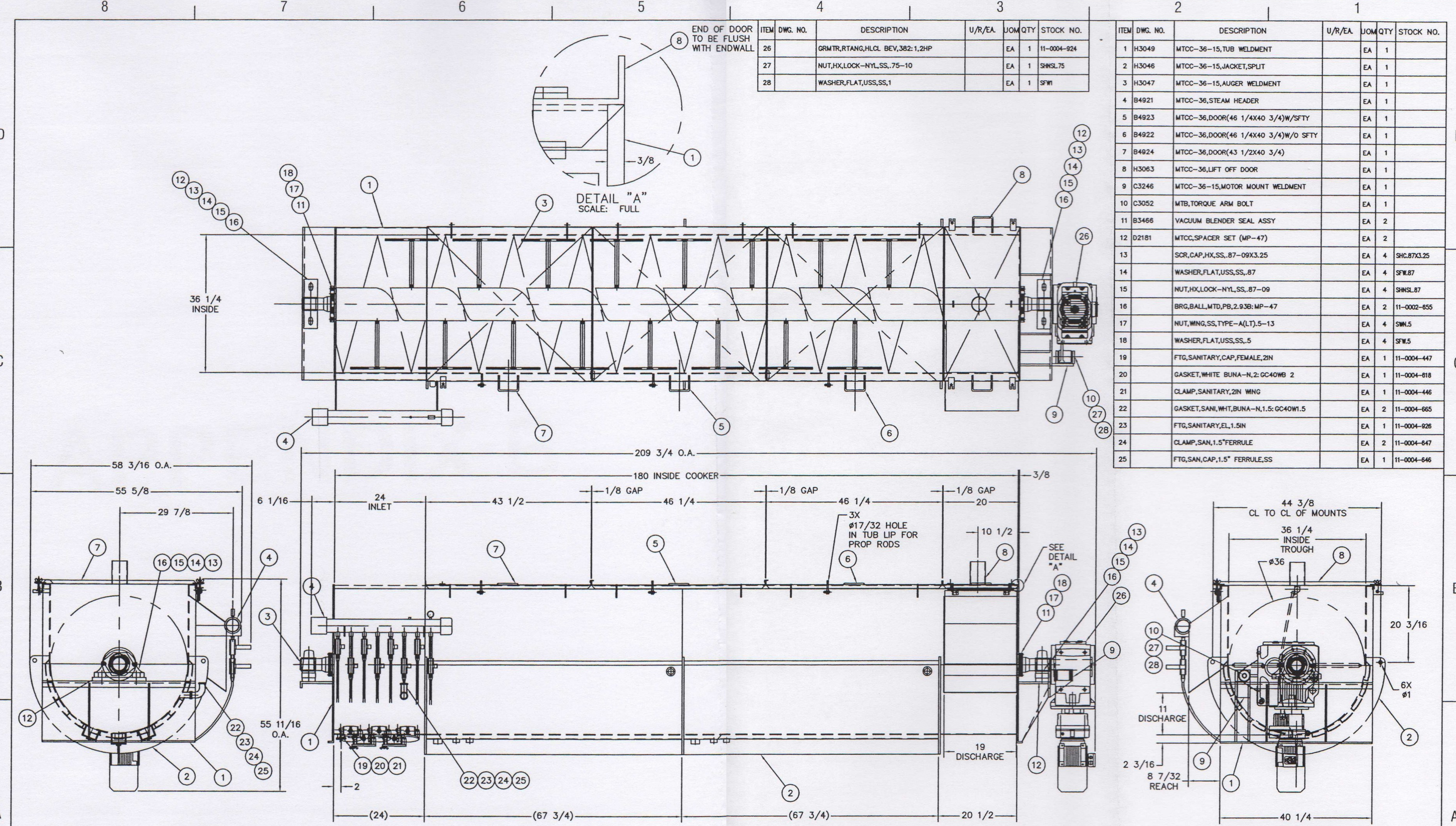
WELDING: CONTINUOUS
 COVER: THREE HINGED AND ONE LIFT OFF SOLID MANUAL COVERS WITH SAFETY INTERLOCK

BEARINGS: STEEL-IT COATED ON BOTH DRIVE AND DISCHARGE ENDS
 PRIMARY VOLTAGE: 230/460V-60HZ-3PH (NO STARTERS)
 DRIVE: 2 HP TEFC INVERTER DUTY GEARMOTOR WITH CHAIN AND SPROCKET AND STAINLESS STEEL GUARD

SPEED: 2 TO 20 MINUTES DWELL TIME
 SHAFT SEALS: SANITARY SPLIT SEALS, EASILY REMOVED
 JACKET: 14.9 PSI SPLIT STAINLESS STEEL JACKET UNIT TO BE SUPPORTED FROM CEILING BY CUSTOMER
 CAPACITY: 4000 POUNDS PER HOUR OF 3/8" GROUND PRODUCT
 UNIT DRY WEIGHT: 4250 LBS
 JACKET AREA: 54 FT²



UNLESS OTHERWISE SPECIFIED: TOLERANCES .XX = ±.010 XXX = ±.003 ANGULAR = ± 0.30° FRACTIONAL BACKS = 1/64 SAW, SHEAR ± 1/16 BURL WELD ± 1/8 FINISH 125		CUSTOMER MICHAEL ANGELO'S AUSTIN, TX CUST. ORDER # 208367 SERIAL NO. 7315 MTC ORDER # FD60900-002		MATERIALS TRANSPORTATION CO. 1408 S. COMMERCE P.O. BOX 1308 TEMPLE, TEXAS 76704	
MATERIAL STAINLESS STEEL FINISH GLASS BEAD		TITLE GENERAL ARRANGEMENT MTCC-36-15		SCALE 1" = 1'-0" DRAWING NUMBER H3017 SHEET OF 1 1 REVISION# 1 DRAWER 10	
REV. 1 REVISED PER RDC 5848 LSW 07-06-2000 GTT 07-07-2000	BY LSW DATE 06-23-2000 CHECKED GTT DATE 06-26-2000		NEXT ASBY. PREVIOUS DWG. NO.		



ITEM	DWG. NO.	DESCRIPTION	U/R/EA	JOM QTY	STOCK NO.
26		GRMTR,RTANG,HLCL BEV,382:1,2HP		EA 1	11-0004-924
27		NUT,HX,LOCK-NYL,SS,.75-10		EA 1	SHNSL.75
28		WASHER,FLAT,USS,SS,1		EA 1	SFW1

ITEM	DWG. NO.	DESCRIPTION	U/R/EA	JOM QTY	STOCK NO.
1	H3049	MTCC-36-15,TUB WELDMENT		EA 1	
2	H3046	MTCC-36-15,JACKET,SPLIT		EA 1	
3	H3047	MTCC-36-15,AUGER WELDMENT		EA 1	
4	B4921	MTCC-36,STEAM HEADER		EA 1	
5	B4923	MTCC-36,DOOR(46 1/4X40 3/4)W/SFTY		EA 1	
6	B4922	MTCC-36,DOOR(46 1/4X40 3/4)W/O SFTY		EA 1	
7	B4924	MTCC-36,DOOR(43 1/2X40 3/4)		EA 1	
8	H3063	MTCC-36,LIFT OFF DOOR		EA 1	
9	C3246	MTCC-36-15,MOTOR MOUNT WELDMENT		EA 1	
10	C3052	MTB,TORQUE ARM BOLT		EA 1	
11	B3466	VACUUM BLENDER SEAL ASSY		EA 2	
12	D2181	MTCC,SPACER SET (MP-47)		EA 2	
13		SCR,CAP,HX,SS,.87-09X3.25		EA 4	SHC.87X3.25
14		WASHER,FLAT,USS,SS,.87		EA 4	SFW.87
15		NUT,HX,LOCK-NYL,SS,.87-09		EA 4	SHNSL.87
16		BRG,BALL,MTD,PB,2.938:MP-47		EA 2	11-0002-655
17		NUT,WING,SS,TYPE-A(LT).5-13		EA 4	SFW.5
18		WASHER,FLAT,USS,SS,.5		EA 4	SFW.5
19		FTG,SANITARY,CAP,FEMALE,2IN		EA 1	11-0004-447
20		GASKET,WHITE BUNA-N,2:GC40WB 2		EA 1	11-0004-618
21		CLAMP,SANITARY,2IN WING		EA 1	11-0004-446
22		GASKET,SANI,WHT,BUNA-N,1.5:GC40W1.5		EA 2	11-0004-665
23		FTG,SANITARY,EL,1.5IN		EA 1	11-0004-926
24		CLAMP,SAN,1.5"FERRULE		EA 2	11-0004-647
25		FTG,SAN,CAP,1.5" FERRULE,SS		EA 1	11-0004-646

UNLESS OTHERWISE SPECIFIED:
 TOLERANCES:
 SIZE = ±.010 XXX = ±.003
 ANGULAR = ±.010
 FRACTIONAL SIZES ± 1/64
 SAW, SHEAR ± 1/16
 BURK, WELD ± 1/8
 FRESH 125

CUSTOMER: MICHAEL ANGELO'S AUSTIN, TX
 OUT. ORDER # 209367
 SERIAL NO. 7315
 MTC ORDER # F080900-002

MATERIAL: STAINLESS STEEL
 FINISH: GLASS BEAD

BY: DS
 DATE: 7/21/2000
 CHECKED: GTT
 DATE: 7/27/2000
 APPROVED:

SCALE: 1" = 1'-0"
 DRAWING NUMBER: H3065
 SHEET OF: 1
 REVISION: 1
 NEXT ASSY.:
 PREVIOUS DWG. NO.:

MTC MATERIALS TRANSPORTATION CO.
 1408 S. COMMERCE P.O. BOX 1356 TEMPLE, TEXAS 76704

TITLE: MTCC-36-15, TOP ASSEMBLY

DRIVER: 10