



MATERIALS TRANSPORTATION COMPANY™

SINCE 1946

An Employee Owned Company

ENGINEERS/DESIGNERS/MANUFACTURERS

P.O. Box 1358 • Temple, Texas 76503-1358 • Telephone (254) 298-2900
Toll Free (800) 433-3110 • Fax (254) 771-0287
www.MTCworldwide.com

OPERATION AND MAINTENANCE MANUAL

MTC MODEL H-LEC

HYDRAULIC DUMPER

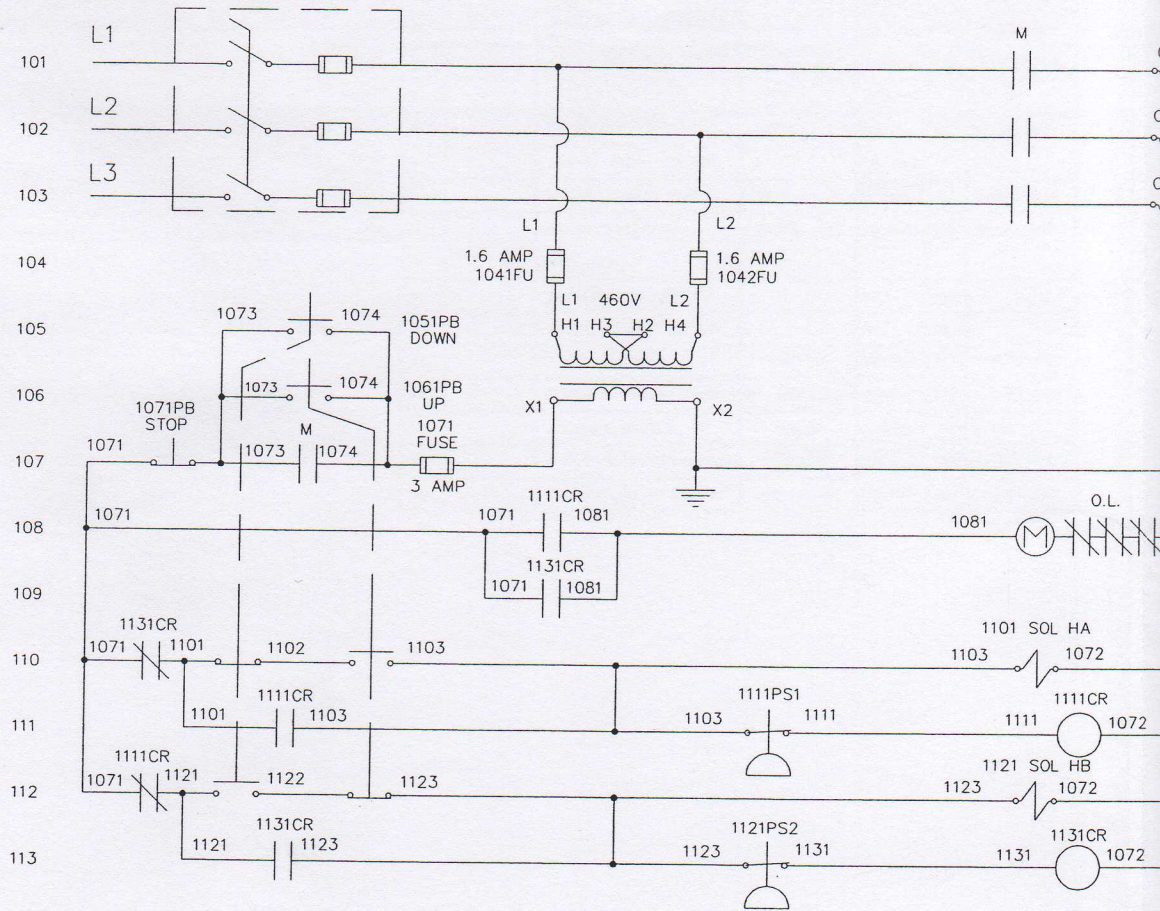
MICHAEL ANGELO'S MTC # D060900-002

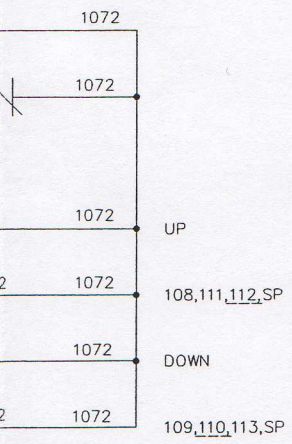
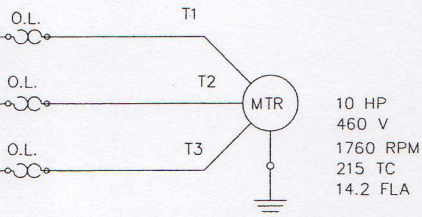
P.O. # 209367

S/N 2816

460V
60HZ
3PH

DISCONNECT
BY CUSTOMER

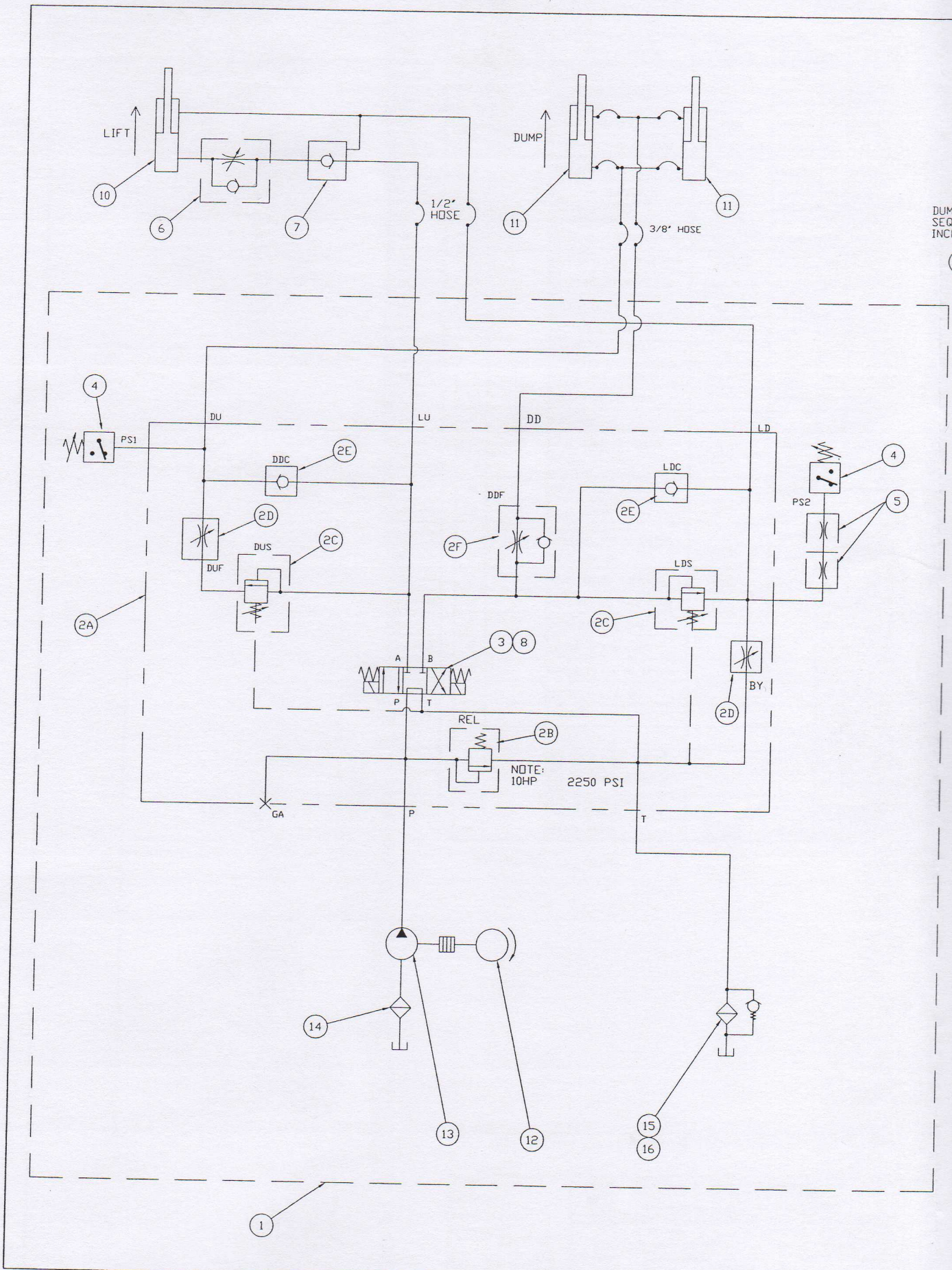




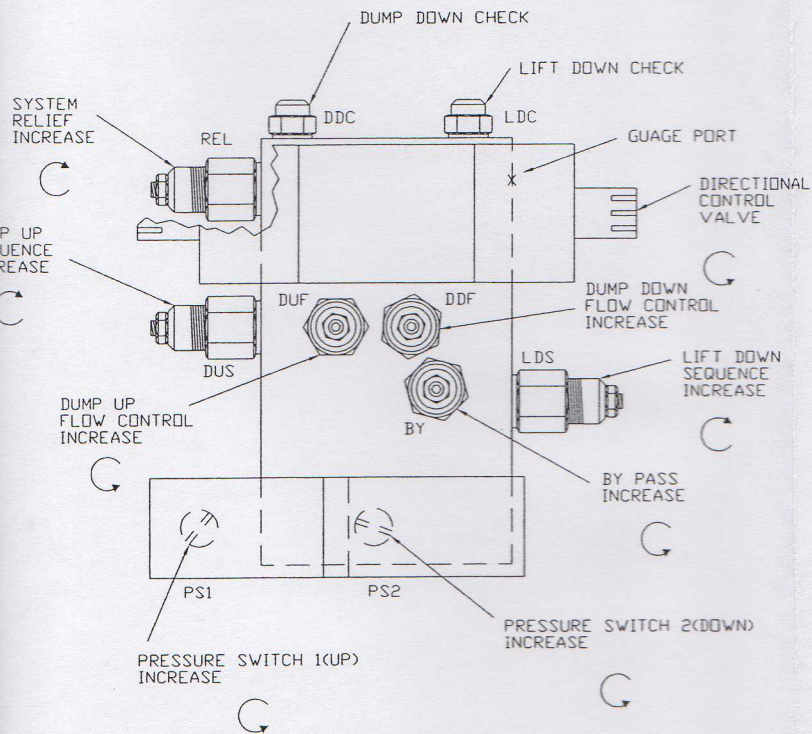
ITEM	LINE #	DESCRIPTION	MFR. #	MFR.	QTY	STOCK NO.
1		ENCLOSURE	A-20H16 06SSLP	HOFF	1	10-101
2		PANEL	A-20P16	HOFF	1	10-336
3	107	FUSE 3 AMP	FNM-3	BUSS	1	10-265
4		TERMINAL STRIP	1492-F1	A.B.	24	10-102
5		CLIP	1492-N2	A.B.	6	10-105
6		END BARRIER	1492-N18	A.B.	3	10-103
7		PLUG IN JUMPER	1492-N13	A.B.	10	10-608
8		PANDUIT	E1X1WH6		24"	10-606
9		PANDUIT COVER	C1WH6		24"	10-607
10	105	PUSH BUTTON ASS'Y (3-P.B.)	800H-3HC4	A.B.	1	10-0001-091
11	105,106	CONTACT BLOCK	800T-XD1	A.B.	2	10-976
12	111,113	RLY,120VAC,4,CONTACTS	700-N400A1	A.B.	2	10-111
13	111,113	PRESSURE SWITCH (2 REQ)	9048-4	BARK DALE	REF HYD	9-334
14	102	MOTOR (1 REQ)	CM3714T	BALDOR	REF HPU	10-216
15	108	STARTER	509-B0D	A.B.	1	10-591
16	105	XFMR., 15KVA, 230/460PRI-120SEC	TA-2-81212-F3	ACME	1	10-0003-094
17		HEATER	W-56	A.B.	3	10-870
19	104	FU, FNO-1-6/10, CLASS CC	FNO-R-1-6/10	BUSS	1	10-0003-276
20		CONN, LUG, 4-14GA	L70	BLACKBURN	1	10-0003-066



UNLESS OTHERWISE SPEC'D: TOLERANCES .XX = ±.010 XXX = ±.003 ANGULAR = ±.030' FRACTIONAL MAX'D = 1/64 SAW, SHEAR ± 1/16 BURR, WELD ± 1/8 FINISH 125		CUSTOMER CUST ORDER # SERIAL NO. MTC ORDER #		MATERIALS TRANSPORTATION CO. 1408 S. COMMERCE ST. P.O. BOX 1358 TEMPLE, TEXAS 76504			
MATERIAL		BY		DATE		TITLE	
FINISH		DRAWN	KB	8/17/99		SCALE	DRAWING NUMBER
REV.		CHECKED	RR	9/14/99		FULL	H2214
		APPROVED				NEXT ASSY.	SHEET OF
							1 1
							REVISION #
							DRAWER EH



DUM
 SEQ
 INCR

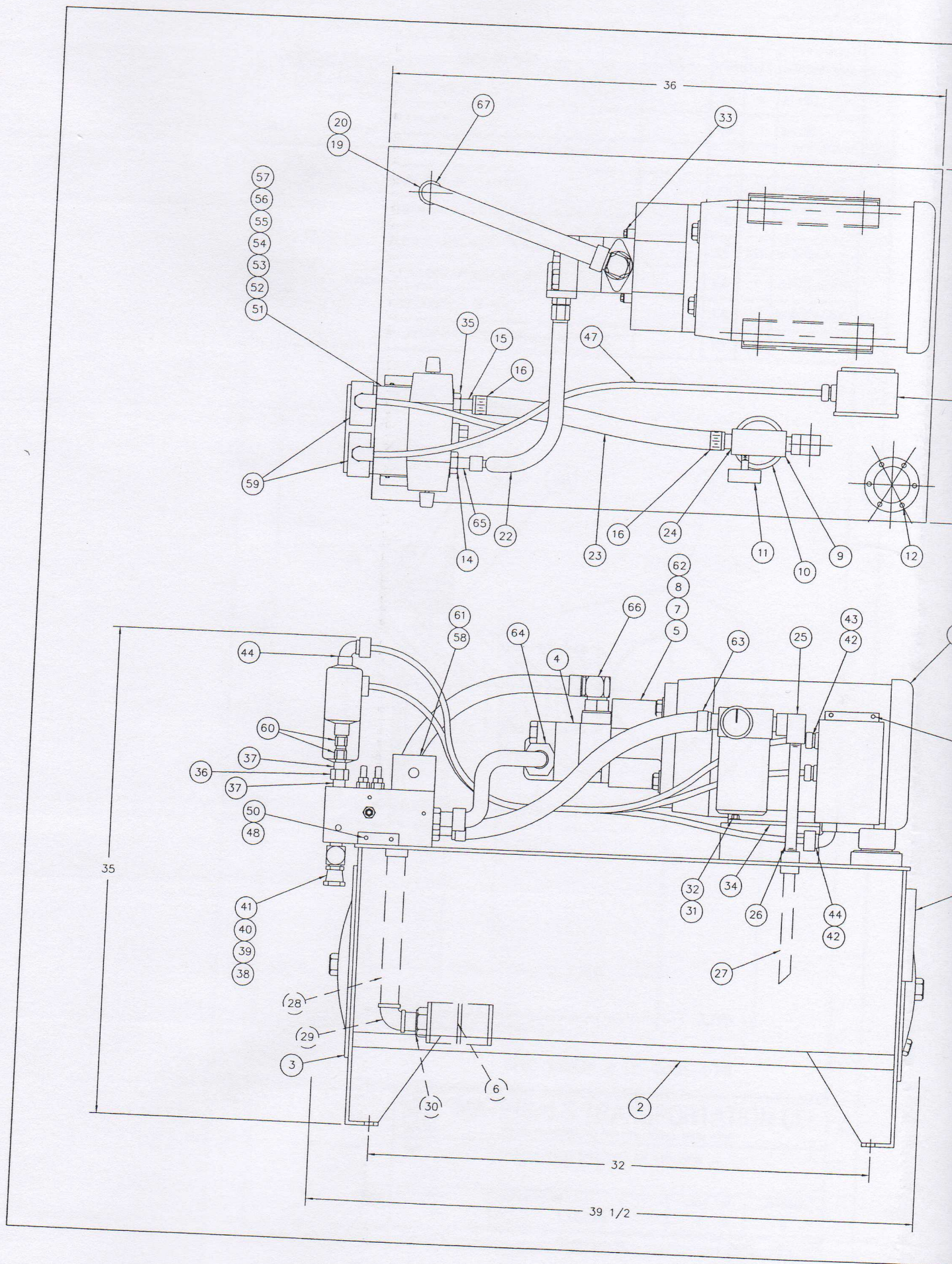


SEQUENCING MANIFOLD
(TOP VIEW)

ITEM	DWG NO	DESCRIPTION	MFG. NO	MFG	QTY	STOCK NO
1	H2204	SEQUENCING HYD POWER UNIT			1	9-0003-394
2		MANIFOLD ASSEMBLY (QTY 1)	J1928	HYDRAQUIP	REF	9-0002-773
2A		MANIFOLD, SEQUENCE (QTY 1)	370510	HYDRAQUIP	REF	9-0002-619
2B		CARTRIDGE, RELIEF (QTY 1)	1A400-P-30SV	FLUID CONTROLS	REF	9-0002-614
2C		CARTRIDGE, SEQUENCE (QTY 2)	1SA400-P-50SV	FLUID CONTROLS	REF	9-0002-615
2D		CARTRIDGE, NEEDLE (QTY 1)	2N400-P-SV	FLUID CONTROLS	REF	9-0002-616
2E		CARTRIDGE, CHECK (QTY 2)	3C400-S-SV	FLUID CONTROLS	REF	9-0002-617
2F		RESTRICTOR W/CHECK CARTRIDGE (QTY 1)	2R400-P-SV	FLUID CONTROLS	REF	9-0002-618
3		VALVE, DIRECTIONAL CONTROL (QTY 2)	DG4S4W018C BB 60 S491	VICKERS	REF	9-0003-448
4		SWITCH, PRESSURE (QTY 2)	9048-4	BARKSDALE	REF	9-334
5		GAUGE, SNUBBER	602	ARROW	REF	9-0001-429
6		VALVE, FLOW CONTROL	F-30B	DELTRDL	1	9-217
7		VALVE, CHECK, PILOT	4K32-N4-S	HYDRAQUIP DANFOSS	1	9-0002-859
8		KIT,BOLT,HYD,VLV	BKDG01 633	VICKERS	REF	9-0001-687
9		NOT USED				
10		CYLINDER, LIFT (QTY 1)		MTC	REF	
11		CYLINDER, DUMP (QTY 2)		MTC	REF	
12		MOTOR, ELECTRIC	CM3714T	BALDOR	REF	9-0002-654
13		PUMP,HYD,VANE,1.19CU,IN	V10-1S6S-1A20	VICKERS	REF	9-0003-393
14		STRAINER, SUCTION, 1"	M3936	MARVEL	REF	9-104
15		FLTR,CRTG,ASSY,10 MICRON	F4E030CC -BDOLFR	SOUTH-WESTERN	REF	9-0001-455
16		FLTR,CRTG,ELE,10 MICRON	SPE-15-10	PARKER	REF	9-0001-358

2

CUSTOMER 1408 S COMMERCE ST P.O. BOX 1358 TEMPLE, TEXAS 76504		MATERIALS TRANSPORTATION CO.	
CUSTOMER # SERIAL NO. MTC ORDER #		TITLE HYDRAULIC SCHEMATIC H-LE SERIES DUMPERS 10HP W/10HP SEQUENCING HYDRAULIC POWER UNIT	
REV 2 REVISED PER RDC 5324	KB 1/4/2000 RR 1/5/2000	DRAWN CHECKED APPROVED	BY DATE 8/12/99 8/16/99 8/23/99
REV 1 REVISED PER RDC 4972	KB 9/22/99 RR 9/23/99	SCALE FULL	DRAWING NUMBER H2203
SHEET OF 1 1			REVISION# 2
NEXT ASS'Y.			DRAWER EH



ITEM	DWG. #	DESCRIPTION	WEIGHT (TOTAL)	SQ.FT. (EACH)	QTY.	STOCK #
35		O-RING ADAPTER, STRAIGHT THREAD		TOMPKINS	REF	6400-12-8
36		UNION, 1/4 HP			REF	PHU.25
37		NIPPLE, 1/4 X CLOSE HP			REF	PHN.25XC
38		O-RING ADAPTER, STRAIGHT		TOMPKINS	REF	6900-8-8
39		O-RING ADAPTER, STRAIGHT		TOMPKINS	REF	6900-8-6
40		O-RING ADAPTER, STRAIGHT THREAD		TOMPKINS	REF	6400-6-8
41		O-RING ADAPTER, STRAIGHT THREAD		TOMPKINS	REF	6400-8
42		HUB, 1/2, WATER-TITE	ST-1	MYERS	REF	10-129
43		CORD GRIP, STRAIGHT	CG-3750	APPLETON	REF	10-179
44		CORD GRIP, 90°	CG90-3750	APPLETON	REF	10-178
45		ENCLOSURE	A-604CH	HOFFMAN	REF	10-196
46		PANEL	A-6P4	HOFFMAN	REF	10-602
47		CABLE, BLACK (QTY=FT)	SO-16-3		REF	10-718
48		1/4-20X3/4 HX HEAD CAP SCREW ZP			REF	ZHC.25X.75
49		1/4-20 SELF LOCKING HX NUT ZP			REF	ZHNSL.25
50		1/4 LOCK WASHER ZP			REF	ZLW.25
51		PIPE FITTING HEX HD PLUG		TOMPKINS	REF	5406-P-4
52		MANIFOLD, SEQUENCE	370510	HYDRAQUIP	REF	9-0002-619
53		CARTRIDGE, RELIEF	1A400-P-30SV	FLUID CONTROLS	REF	9-0002-614
54		CARTRIDGE, SEQUENCE	1SA400-P-50SV	FLUID CONTROLS	REF	9-0002-615
55		CARTRIDGE, NEEDLE	2N400-P-SV	FLUID CONTROLS	REF	9-0002-616
56		CARTRIDGE, CHECK	3C400-5-SV	FLUID CONTROLS	REF	9-0002-617
57		RESTRICTOR W/CHK CART	2R400-P-SV	FLUID CONTROLS	REF	9-0002-618
58		VALVE, DIR CONTROL	DG4S4W001BC BB 60 5491	VICKERS	REF	9-0003-448
59		SWITCH, PRESSURE	9048-4	BARKSDALE	REF	9-334
60		GAUGE, SNUBBER	602	ARROW	REF	9-0001-429
61		KIT,BOLT,HYD,VLV	BKDG01 633	VICKERS	REF	9-0001-687
62		INSERT	M270	MAGNALOY	REF	11-0004-600
63		FTG,TB,M EL (1-1/16MJCX3/4MNPT)	2501-12-12	TOMPKINS	REF	2501-12-12
64		FTG,O-RG,STH(3/4MJCX3/4SAE)	6400-8	TOMPKINS	REF	6400-8
65		FTG,O-RG,EL CONN(3/4MJCX3/4SAE)	6801-8	TOMPKINS	REF	6801-8
66		FTG,O-RG,EL CONN(1.31MJCX1/31MSAE)	6801-16	TOMPKINS	REF	6801-16
67		FTG,TB,M CONN(7/8MJCX1/2MNPT)	2404-16-16	TOMPKINS	REF	2404-16-16

ITEM	DWG. #	DESCRIPTION	WEIGHT (TOTAL)	SQ.FT. (EACH)	QTY.	STOCK #
1		MOTOR, ELECTRIC	CM3714T	BALDOR	REF	9-0002-654
2		RESERVOIR ASSEMBLY, 30 GALLON	10123	VECTOR	REF	9-0002-320
3		GASKET, RESERVOIR DOOR	5081	VECTOR	REF	11-0002-531
4		PUMP, HYD, VANE, 1.19CU, IN	V10-1S6S-1A20	VICKERS	REF	9-0003-393
5		CPLG, HALF, 3/4B-1/4KW	M200-3/4B-1/4KW	MAGNALOY	REF	9-0003-392
6		STRAINER, SUCTION, 1"	M3936	MARVEL	REF	9-104
7		MOUNT, FLANGED PUMP/MOTOR	F2-2A	MACMILLAN HYDRAULIC	REF	9-103
8		CPLG, HALF, 1-3/8B-5/16KW	M200-1-3/8B-5/16KW	MAGNALOY	REF	11-0004-602
9		FLTR, CRTG, ASSY, 10 MICRON	F4E030CC -BDOLFR	SOUTH-WESTERN	REF	9-0001-455
10		FLTR, CRTG, ELE, 10 MICRON	SPE-15-10	PARKER	REF	9-0001-358
11		GAUGE, FILTER	923472	PARKER	REF	9-0002-321
12		FILLER/BREATHER, OIL	FCS-537W	LENZ	REF	9-110
13		GAUGE, FLUID LEVEL W/THERM	LG5-T	LHA	REF	9-0002-322
14		VALVE, INLET CHECK	608-1003	CHAR-LYNN	REF	9-0002-325
15		HOSE BARB, 3/4" SWIVEL		PARKER	REF	30682-12-12
16		NOT USED				
17		HOSE BARB, 3/4" SWIVEL		PARKER	REF	0688-16-16
18		O-RING ADAPTER STRAIGHT THREAD		TOMPKINS	REF	6400-16-12
19		HOSE INSERT, MALE PIPE		TOMPKINS	REF	4404-16
20		HOSE, CLEAR, 1" (QTY=FT)		POLYWIRE	REF	9-0002-326
21		O-RING ADAPTOR STRAIGHT THREAD ELBOW		TOMPKINS	REF	6801-10
22		HOSE ASSEMBLY	F4210639-10-8-8-12	PARKER	REF	9-0002-327
23		HOSE, CLEAR (QTY=FT)	PV162-1	POLYWIRE	REF	9-0002-328
24		HOSE INSERT, MALE PIPE		TOMPKINS	REF	4404-12
25		STREET ELBOW, 3/4, LP			REF	PLS.75
26		NIPPLE, 3/4 X 8 LP			REF	PLN.75X8
27		NIPPLE, 3/4 X 10, LP			REF	PLN.75X10
28		NIPPLE, 1 X 10, LP			REF	PLN1X10
29		ELBOW 1" , LP			REF	PLE1
30		NIPPLE, 1 X 2, LP			REF	PLN1X2
31		3/8-16 X 1 1/4 HEX HD CAP SCREW, ZP			REF	ZHC.37X1.25
32		3/8-16 SELF-LOCKING HEX NUT, ZP			REF	ZHNSL.37
33		3/8-16 X HEX HD CAP SCREW, ZP			REF	ZHC.37X1
34		MOUNT, MOTOR	2X2X1/2, 70 DURO	WILSON	REF	11-0002-538

BOM CONTINUED, NEXT COLUMN

MTC STOCK # 9-0003-394

REV 1 REVISED PER RDC 4972

KB 9/22/99
RR 9/23/99

CUSTOMER		MATERIALS TRANSPORTATION CO.	
CUST. ORDER #	BY	DATE	SCALE
SERIAL NO.	KB	6/11/99	NTS
MTC ORDER #	CHECKED	RR	8/16/99
DRAWN	APPROVED		
DRAWING NUMBER		SHEET OF	
H2204		1 1	
TITLE		REVISION #	
TITLE SEQUENCING HYDRAULIC POWER UNIT FOR H-LE SERIES 10 HP, 8.75 GPM, 30 GALLON CAPACITY, 208/230/460 COMPLETE UNIT AS MODIFIED & SHIPPED TO CUSTOMER		1	
NEXT ASSY.			DRAWER
			EH

12-966 SEAL KIT BILL OF MATERIAL

D

2

2

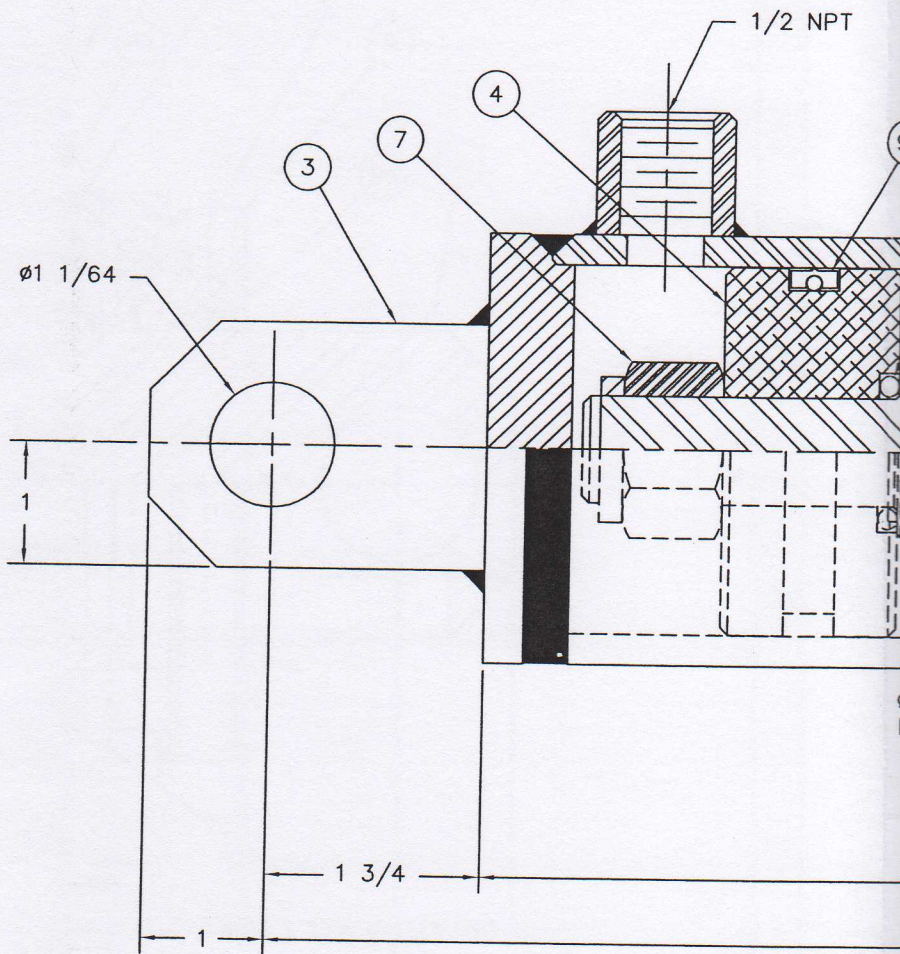
2

ITEM	DWG NO.	DESCRIPTION	MFG NO.	QTY	STOCK NO.
9A		O-RG,BUNA-N	2-119	1	9-141
9B		SEAL,WPER	U-1375	1	9-160
9C		SEAL,PP,MOLYTHANE	25001375-375ZAL	1	9-0002-879
9D		O-RG,2-5/8X3X3/16	2-334 N674-70	1	9-0002-816
9E		RING,BACK-UP,2-5/8X3X3/16	8-334 N300-90	2	9-0002-827
9F		SEAL,CROWN,WIDE BASE	CP-334-2	1	9-0003-504

C

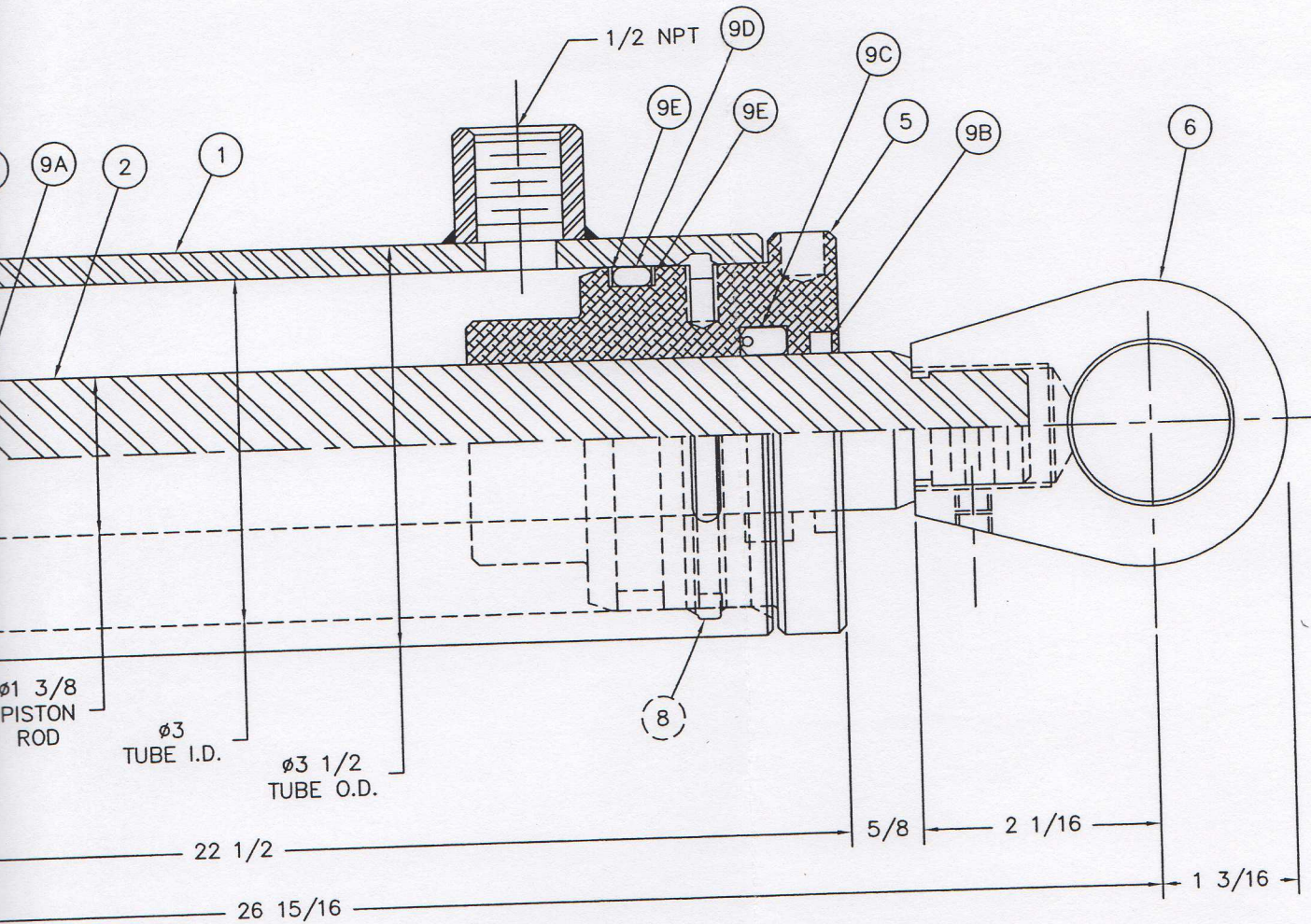
B

A




REV. 2	REVISED
REV. 1	REVISED

ITEM	DWG. NO.	DESCRIPTION	U/R/EA.	UOM	QTY	STOCK NO.
1	C0204	TUBE,CYL,ASSY		EA	1	9-166
2	C0205	ROD,CYL,M30-16-11		EA	1	9-167
3	C0106	END CAP,CLEVIS,CYL,3IN,WELDMENT		EA	1	9-154
4	B0151	PISTON FOR 3" CYLINDER		EA	1	12-915
5	C0217	GLAND,M30-**-11 CYL,O-RING/POLY-PAK		EA	1	12-977
6	B0122-2	ROD,EYE,1-3/8"ROD,1-14THD		EA	REF	9-233
7		NUT,HX,LOCK-NYL,ZP,G2,.87-14		EA	1	ZHNSL.87-14
8	B119-3	KEY,RETAINING,3 IN CYL		EA	1	9-0001-442
9		SEAL KIT,M30-**-11,O-RING/POLY-PAK		EA	1	12-966



MTC STOCK # 12-0001-070

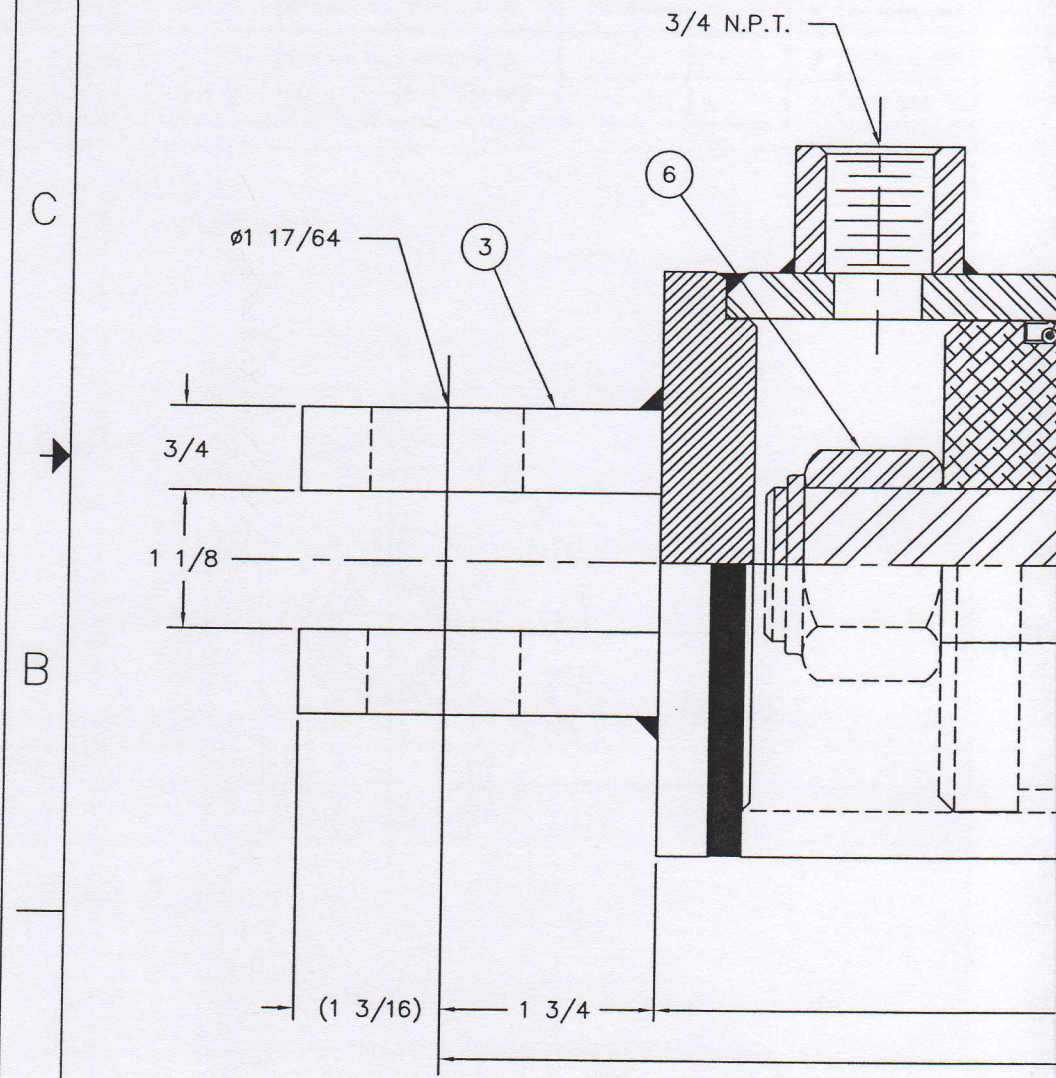
UNLESS OTHERWISE SPEC'D: TOLERANCES .XX = ±.010 XXX = ± .003 ANGULAR = ± 0°30' FRACTIONAL MACH'D ± 1/64 SAW, SHEAR ± 1/16 BURR, WELD ± 1/8 FINISH 125		CUSTOMER CUST. ORDER # SERIAL NO. MTC ORDER #		 MATERIALS TRANSPORTATION CO. 1408 S. COMMERCE P.O. BOX 1358 TEMPLE, TEXAS 76504	
MATERIAL STAINLESS STEEL		DRAWN BY BW 4-21-2000		TITLE CYL, HYD, M30-16-11, OR/PP	
FINISH		CHECKED		SCALE NA	
APPROVED		DATE 4-21-2000		DRAWING NUMBER C0234	
AP 10/23/97		APPROVED		SHEET OF 1 1	
RK 10/23/97		NEXT ASS'Y.		REVISON# 2	
ED PER RDC #5694		PREVIOUS DWG. NO.		DRAWER MED-LTD	
ED PER RDC #3148					

4

3

12-969 SEAL KIT BILL OF MATERIAL

ITEM	DWG NO.	DESCRIPTION	MFG NO.	QTY	STOCK NO.
8A		O-RG,BUNA-N	2-323	1	9-189
8B		SEAL,WIPER,CYL	U-2500	1	9-239
8C		SEAL,PP	2500-2500-375B	1	9-240
△1 8D		O-RG,3-5/8X4X3/16	2-342-N674-70	1	9-0002-817
△1 8E		RING,BACK-UP 3-5/8X4X3/16	8-342/N300-90	2	9-0002-828
△1 8F		SEAL,CROWN,WIDE BASE	CP-342-2	1	9-0003-505

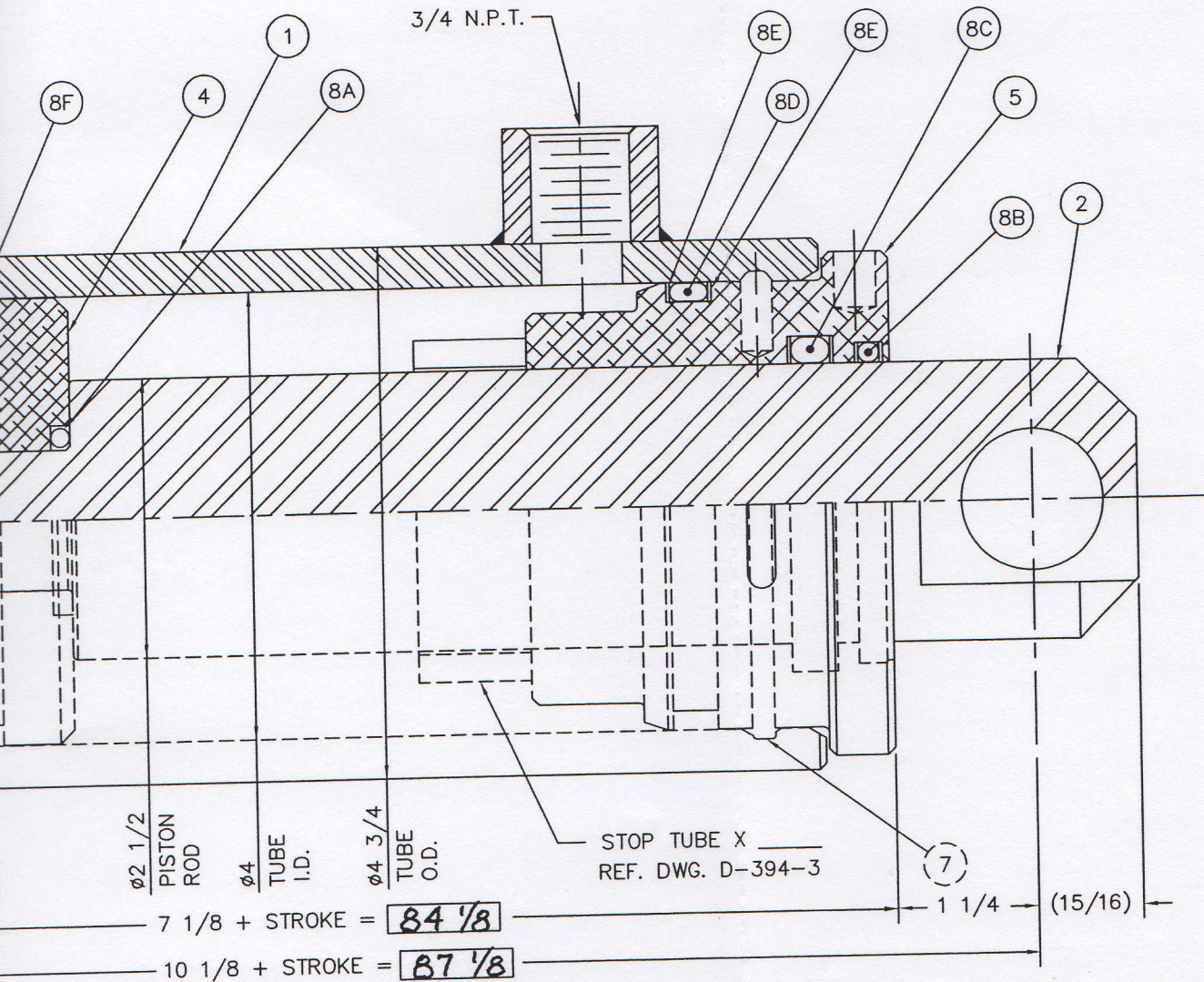


REV. 1 REVISED


4

3

ITEM	DWG. NO.	DESCRIPTION	U/R/EA.	UOM	QTY	STOCK NO.
1	C0108	TUBE,CYLINDER,M40-**-20		EA	1	C0108-77
2	C2948	CYL,PISTON ROD,M40-**-20		EA	1	C2948-77
3	C0104	CLV,END,CAP,ASSY,4" CYL		EA	1	9-180
4	B0153	PISTON,4" CYLINDER		EA	1	12-918
5	C0219	GLAND,M40-**-20 CYLINDER		EA	1	12-979
6		NUT,HX,LOCK-NYL,ZP,G2,1.25-12		EA	1	ZHNSL1.25-12
7	B119-4	KEY,RETAINING,4 IN CYL		EA	1	9-0001-443
8		SEAL KIT,M40-**-20,O-RING/POLY-PAK		EA	1	12-969

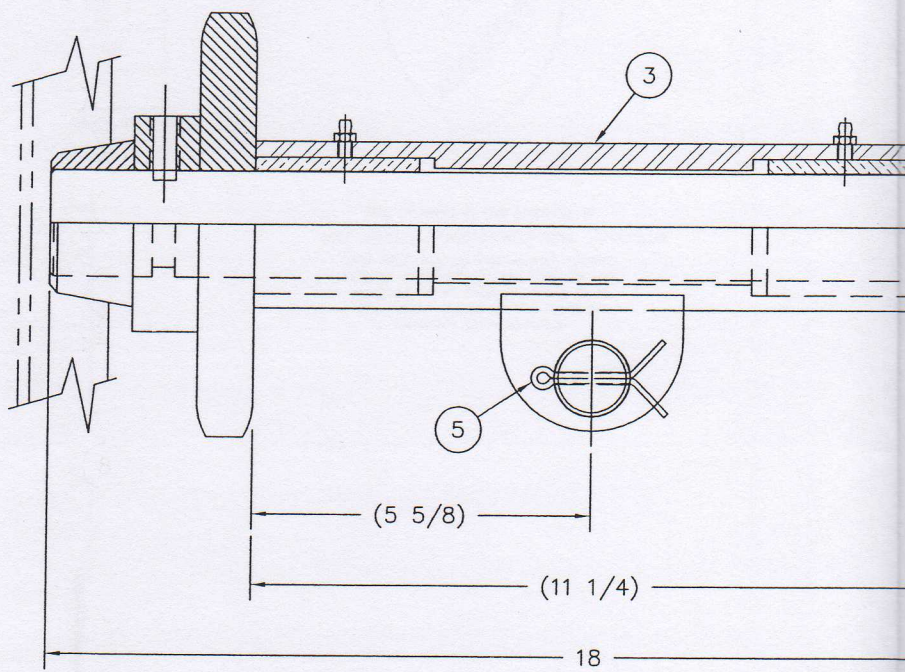
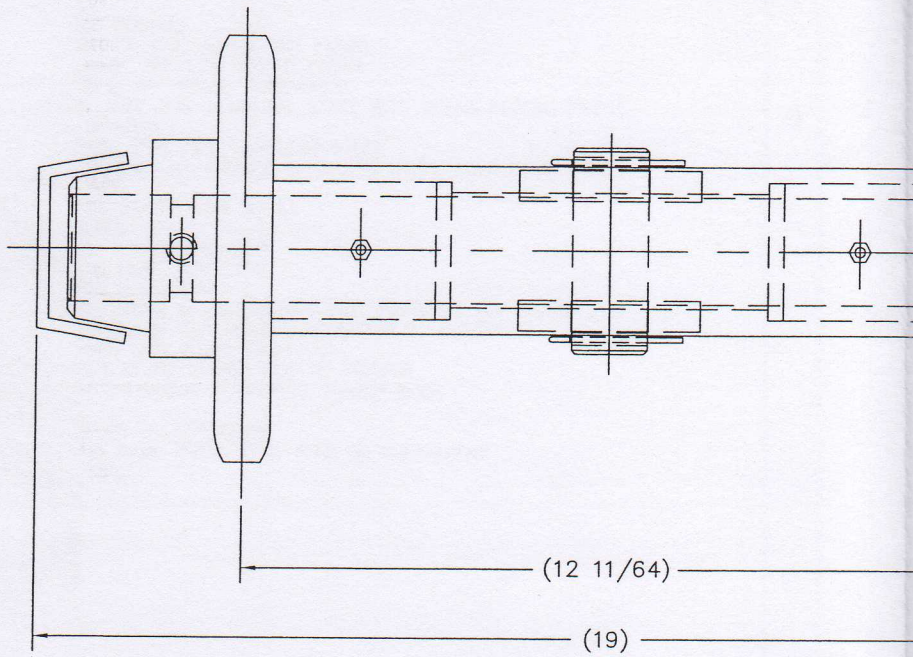


MTC PART NO C2947-77W

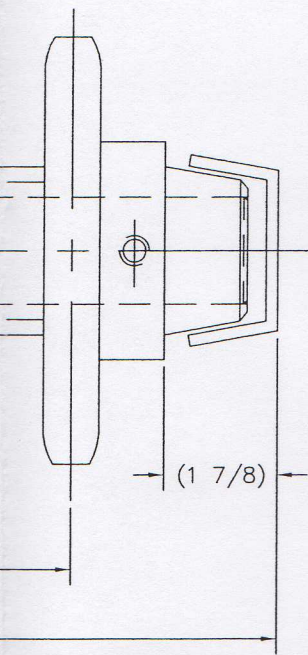
UNLESS OTHERWISE SPEC'D: TOLERANCES XX = ±.010 XXX = ± .003 ANGULAR = ± 0'30" FRACTIONAL MACH'D ± 1/64 SAW, SHEAR ± 1/16 BURN, WELD ± 1/8 FINISH 125	CUSTOMER		 MATERIALS TRANSPORTATION CO. 1408 S. COMMERCE P.O. BOX 1358 TEMPLE, TEXAS 76504		TITLE CYL, HYD, M40-77-20, OR/PP, WHT	
	CUST. ORDER #					
MATERIAL	SERIAL NO.		SCALE FULL	DRAWING NUMBER C2947	SHEET OF 1 1	REVISION# 1
	MTC ORDER #					
	BY DD		DATE 10-9-98		DRAWER MED-LTD	
FINISH	CHECKED	APPROVED	NEXT ASSY.	PREVIOUS DWG. NO.		

PER RDC-5656

BW 4/10/2000

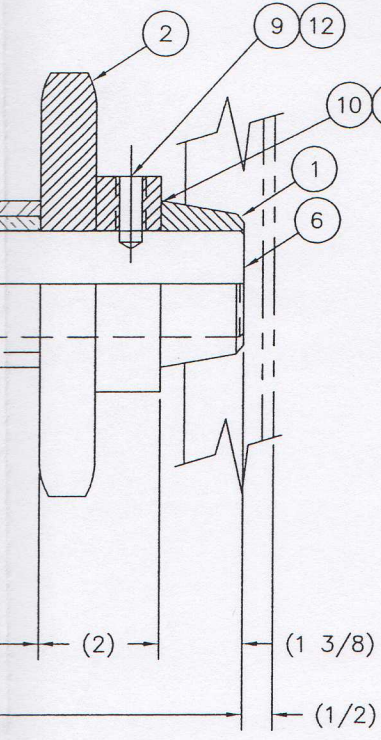


REV.	5
REV.	4
REV.	3

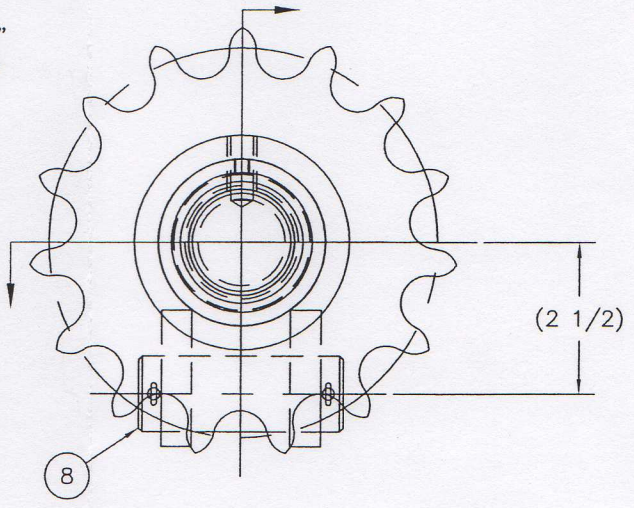


ITEM	DWG. #	DESCRIPTION	WEIGHT (TOTAL)	SQ.FT. (EACH)	QTY.	STOCK #
1	D-689	TAPERED CONE		MTC	2	12-103
2	D-690	MODIFIED SPROCKET		MTC	2	13-123
3	C2807	BEARING HOUSING ASSEMBLY		MTC	1	12-0001-498
4		NOT USED				
5		3/16 X 2 COTTER PIN, SS			2	SCP.18X2
6	D1863	H-LE,CROSSHEAD SHAFT		MTC	1	12-0001-746
7		NOT USED				
8	D-697	CLEVIS PIN		MTC	1	12-573
9		1/2-13 X 1/2 DOG PT SKT SET S, SS			2	SDSS.5X.5
10		WASHER, BZ,2.62X1.75X.12	ST5684-4		2	11-0002-542
11		WASHER, BZ,2.62X1.75X.18			2	11-0002-666
12		1/2-13 X 1/2 CUP PT SET SCREW, SS			2	SCSS.5X.5

5



NOTE: USE 1/8" OR 3/16" BRONZE WASHER WHEN NECESSARY



4 NOT USED
-MTC STOCK #12-570-

UNLESS OTHERWISE SPEC'D: TOLERANCES .XX = ±.010 XXX = ± .003 ANGULAR = ± 0'30" FRACTIONAL MACH'D ± 1/64 SAW, SHEAR ± 1/16 BURN, WELD ± 1/8 FINISH 125 ✓			CUSTOMER MTC MATERIALS TRANSPORTATION CO. 1408 S. COMMERCE P.O. BOX 1358 TEMPLE, TEXAS 76504		
REVISED PER RDC# 2802 AP 10/23/97			CUST. ORDER # SERIAL NO. MTC ORDER #		
REVISED PER RDC#2746 AP 4/15/97			TITLE PIVOTING CROSS HEAD ASSEMBLY FOR 120 CHAIN, H-LE TYPE DUMPER		
REVISED PER RDC#1687 CYN 12-27-95 JG 1-4-96			DRAWN BY DATE JLM 4-10-85 SCALE 1/2 DRAWING NUMBER B3046 SHEET OF 1 1 REVISION# 5		
MATERIAL NOTED FINISH			NEXT ASSY. DRAWER 7		

8

7

6

5

D

C

B

A

CUSTOMER PLEASE
VERIFY O.A.
CEILING HEIGHT

242
O.A.
OPERATING
HEIGHT

171 1/2
DISCHARGE
HEIGHT

16
REACH
OUT

R61 1/2

45°

48
COMBO

48
VAT

42
COMBO

26
VAT

62
BASE

67 3/8
O.A.

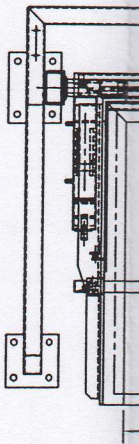
1 1/2
LOAD-IN

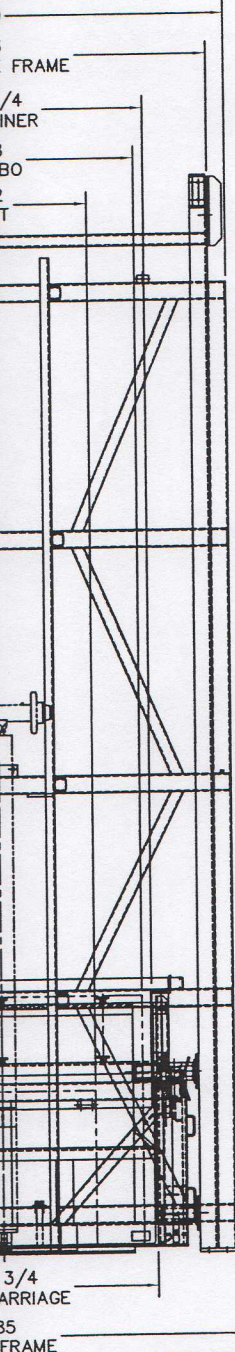
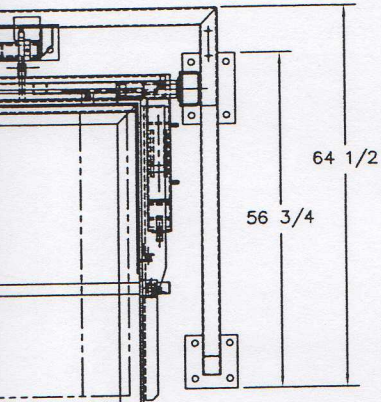
8

7

6

5





GENERAL INFORMATION

MODEL: H-LEC
 CAPACITY: 3000 POUNDS
 LOAD-IN-HEIGHT: 1-1/2" ABOVE THE FLOOR
 DISCHARGE HEIGHT: 171-1/2" ABOVE FLOOR
 DISCHARGE ANGLE: 45° ABOVE HORIZONTAL
 CONSTRUCTION: TYPE 304 STAINLESS STEEL WITH GLASS BEADED FINISH
 WELDING: CONTINUOUS
 DISCHARGE LINER: TYPE 304 STAINLESS STEEL
 HOLD-DOWN-SYSTEM: ADJUSTABLE STAINLESS STEEL HOLD DOWN PIPE
 10HP MOTOR, TEFC
 9-1/2 GPM HYD. POWER UNIT W/ALL
 REQUIRED VALVES
 PRIMARY VOLTS: 460V-60HZ-3PH
 CONTROL VOLTS: 120V-60HZ-1PH
 SEMI-AUTOMATIC OPERATION
 STAINLESS STEEL NEMA IV ENCLOSURES FOR CONTROLS (UP-DOWN-STOP)
 TO BE SHIPPED LOOSE FOR REMOTE MOUNTING BY CUSTOMER
 HYDRAULIC POWER UNIT PIPED COMPLETE
 FOR PLACEMENT ALONG EITHER SIDE OF DUMPER
 MTC HYDRAULIC CYLINDERS W/CHROME PLATED RODS
 SOLID BOTTOM
 ANCHORS SUPPLIED BY CUSTOMER
 WE RECOMMEND RAWL CHEM-STUD TYPE OR EQUIVALENT
 WEIGHT: 3000 LBS.

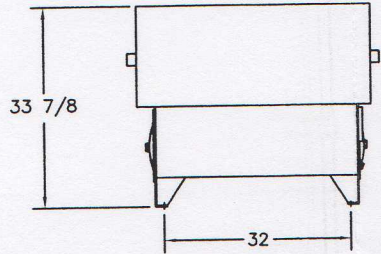
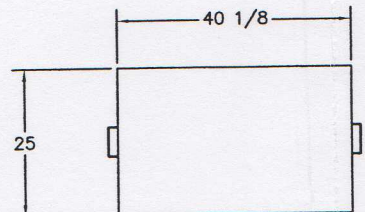
CONTAINER INFORMATION

	LENGTH "A"	HEIGHT "B"	WIDTH "C" *
COMBO	48	42	48
VAT	48	26	32

* DISCHARGE ON THIS SIDE



This Drawing is the property of
MATERIALS TRANSPORTATION COMPANY
 and shall not be reproduced, copied,
 lent, or disposed of, nor used for any
 purpose other than for which it is
 specifically furnished and must be
 returned upon demand.

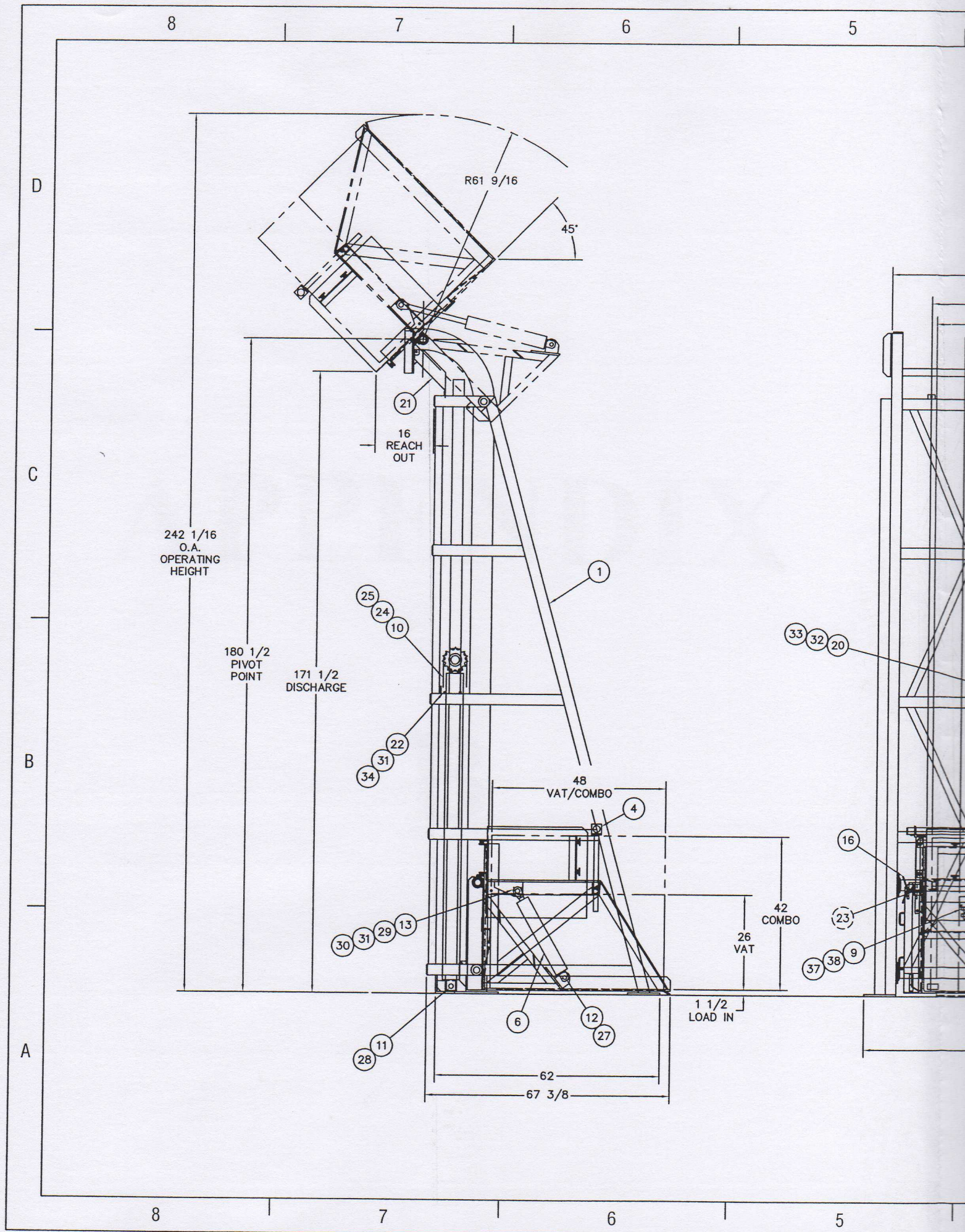


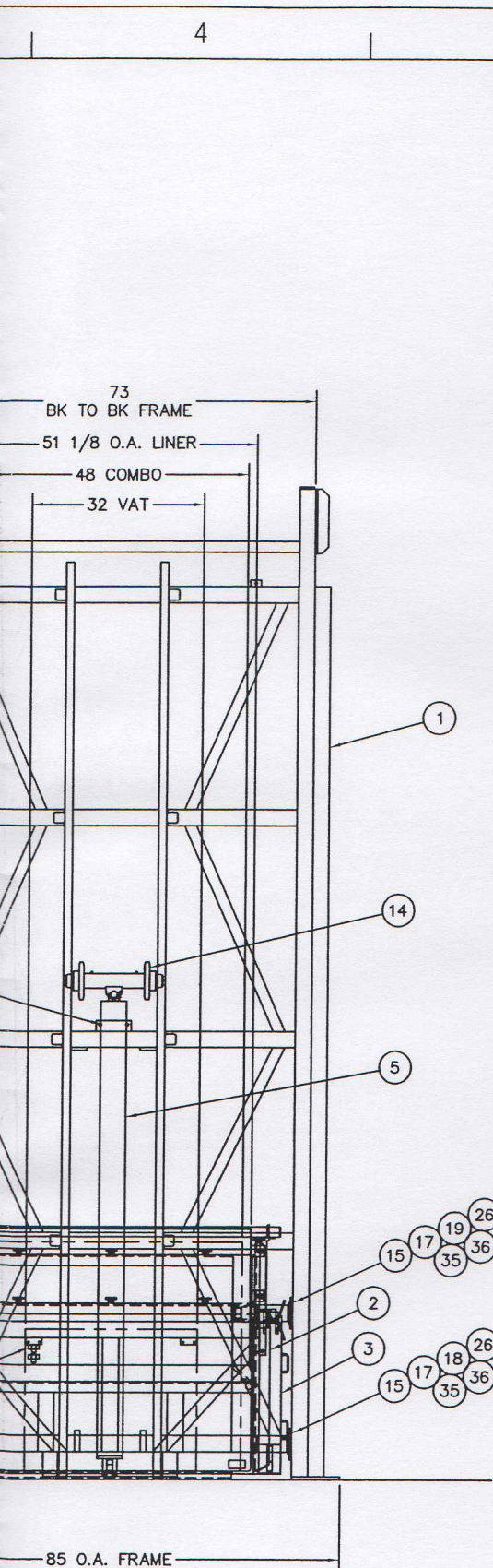
HYDRAULIC POWER UNIT

UNLESS OTHERWISE SPEC'D: TOLERANCES XX = ±.010 XXX = ±.003 ANGULAR = ±.030° FRACTIONAL SLOTTED ± 1/64 SAW, SHEAR ± 1/16 BURN, WELD ± 1/8 FINISH 125	CUSTOMER MICHAEL ANGELO'S AUSTIN, TX CUST. ORDER # 206367	
	SERIAL NO. 2816 MTC ORDER # D060900-002	
MATERIAL STAINLESS STEEL	BY BW	DATE 8/24/2000
FRESH GLASS BEAD	CHECKED JT	DATE 8/28/2000
APPROVED		

MATERIALS TRANSPORTATION CO. 1408 S. COMMENCE P.O. BOX 1356 TEMPLE, TEXAS 76704			
TITLE GENERAL ARRANGEMENT H-LEC 3000# SS			
SCALE 1/16	DRAWING NUMBER H3019	SHEET OF 1 1	REVISIONS 1
NEXT ASSY.	PREVIOUS DWG. NO.	DRAWER 1	

REV. 1	REVISED PER RDC-5978	JT	7-25-2000
--------	----------------------	----	-----------





ITEM	DWG. NO.	DESCRIPTION	U/R/EA	UOM	QTY	STOCK NO.
1	H3069	H-LE, STATIONARY FRAME, SS, 3000#		EA	1	
2	H3070	H-LEC, CARRIAGE FRAME, SS, 3000#		EA	1	
3	H3071	H-LE, ELEVATOR FRAME, SS, 3000#		EA	1	
4	H3072	H-LE, LINER & ADJ HOLD DOWN PIPE, SS		EA	1	
5	C2947	CYL, HYD, M40-77-20, OR/PP, WHT		EA	1	C2947-77W
6	C0234	CYL, HYD, M30-16-11, OR/PP, WHT		EA	1	12-0001-070
7	H2214	ELECTRICAL SCHEMATIC		EA	1	
8	H2203	HYDRAULIC SCHEMATIC		EA	1	
9	C2846	ELEVATOR MANIFOLD		EA	1	12-0001-800
10	D0156	ANCHOR, CHAIN(120), ADJ, NP, ASSY		EA	2	12-127P
11	D0697	CLEVIS PIN, 1.25 DIA, CYL(4IN)		EA	1	12-573
12	D0374	CLEVIS PIN, 1 DIA, 3" CYL		EA	2	12-133
13	C1517	ROD EYE PIN W/KEEPER BAR		EA	2	12-179
14	B3046	HLE, X-HEAD, PIVOT, 120 CHN, ASSY		EA	1	
15	D0416	H-LE, WHEEL, CARRIAGE, ASSY		EA	4	12-142
16	D0138A	WRENCH, HOLDING LUG, SS, DUMPERS		EA	2	12-367
17	B3070-009	WHEEL WEAR BUSHING		EA	4	12-711
18	B3070-008	SHAFT, STUB, SHORT, SS		EA	2	12-710
19	B3070-007	SHAFT, STUB, LONG, SS		EA	2	12-709
20	C2844	LIFT CYLINDER (M40) BRACKET		EA	1	
21	B4308	DRIP CHUTE, SS, 73		EA	1	B4608-73
22	D0232	MANIFOLD, H-LE/H-LET		EA	1	12-116
23		BRG, PL, CST BRZ, 1.765ID X 2.250DX 2.75L		EA	2	11-0002-541
24		CH, RLR, 120, NP	8.13	FT	2	11-102
25		LINK, CONN, CH, RLR, 120, NP		EA	4	11-103
26		BRG, PL, THR, WHSR, 1.75ID X 2.620DX 1.18		EA	4	11-0002-666
27		PIN, COT, EXTEND-PRNG-SQR, SS, .18X1.5		EA	4	SCP.18X1.5
28		PIN, COT, EXTEND-PRNG-SQR, SS, .18X2		EA	2	SCP.18X2
29	B0122-2	ROD, EYE, 1-3/8" ROD, 1-14THD		EA	2	9-233
30		SCR, CAP, HX, SS, .25-20X.75		EA	4	SHC.25X.75
31		WASHER, LOCK, H-SPR, REG, SS, .25		EA	6	SLW.25
32		SCR, CAP, HX, SS, .5-13X1.5		EA	2	SHC.5X1.5
33		NUT, HX, LOCK-NYL, SS, .5-13		EA	2	SHNSL.5
34		SCR, CAP, HX, SS, .25-20X.62		EA	2	SHC.25X.62
35		SCR, SET, HSKT, DOG, SS, .5-13X.5		EA	4	SDSS.5X.5
36		SCR, SET, HSKT, CUP, SS, .5-13X.5		EA	4	SCSS.5X.5
37		NUT, HX, LOCK-NYL, SS, .25-20		EA	2	SHNSL.25
38		SCR, CAP, HX, SS, .25-20X1		EA	2	SHC.25X1
39	B3843	COVER, POWER UNIT, 30 GALLON		EA	1	12-833

NOTE: INSTALL ITEM 35 PRIOR TO INSTALLING ITEM 36.

UNLESS OTHERWISE SPEC'D: TOLERANCES .XX = ±.010 XXX = ± .003 ANGULAR = ± .030 FRACTIONAL MAGTS ± 1/64 SAW, SHEAR ± 1/16 BURR, WELD ± 1/8 FINISH 125		CUSTOMER MICHAEL ANGELO'S AUSTIN, TX CUST. ORDER # SERIAL NO. 2816 WTC ORDER #D060900-002		MATERIALS TRANSPORTATION CO. 1408 S. COMMERCE P.O. BOX 1358 TEMPLE, TEXAS 76704 TITLE H-LEC, TOP ASSEMBLY, SS, 3000#			
MATERIAL	BY	DATE	SCALE	DRAWING NUMBER	SHEET OF	REVISION#	
STAINLESS STEEL	DRWN JT	1-24-2000	1/16	H3068	1 1		
FINISH	CHECKED		NEXT ASSY.	PREVIOUS DWG. NO.	DRAWER 1		
GLASS BEAD	APPROVED						