

BALTIMORE AIRCOIL COMPANY, INC.  
 Subsidiary of Merck & Co., Inc.

DATE: 7/16/81  
 P.O. NO.: 7832  
 B.A.C. NO.: 81-9263P  
 MODEL NO.: (1) VXMC-150  
 REP. NO.: L-1264

VX EVAPORATIVE CONDENSER

CERTIFIED CAPACITY: 106 Tons, R-717 refrigerant, at 96.3 °F.C.T.,  
 +20 °F S.T., 78 °F entering wet bulb.

FAN MOTOR(S): (1) 7½ HP, 1750 RPM, 3 phase, 60 hertz, for 480 volts, 230/460 Suitable  
 Open Dripproof enclosure. Fan drives based on 0" ESP.

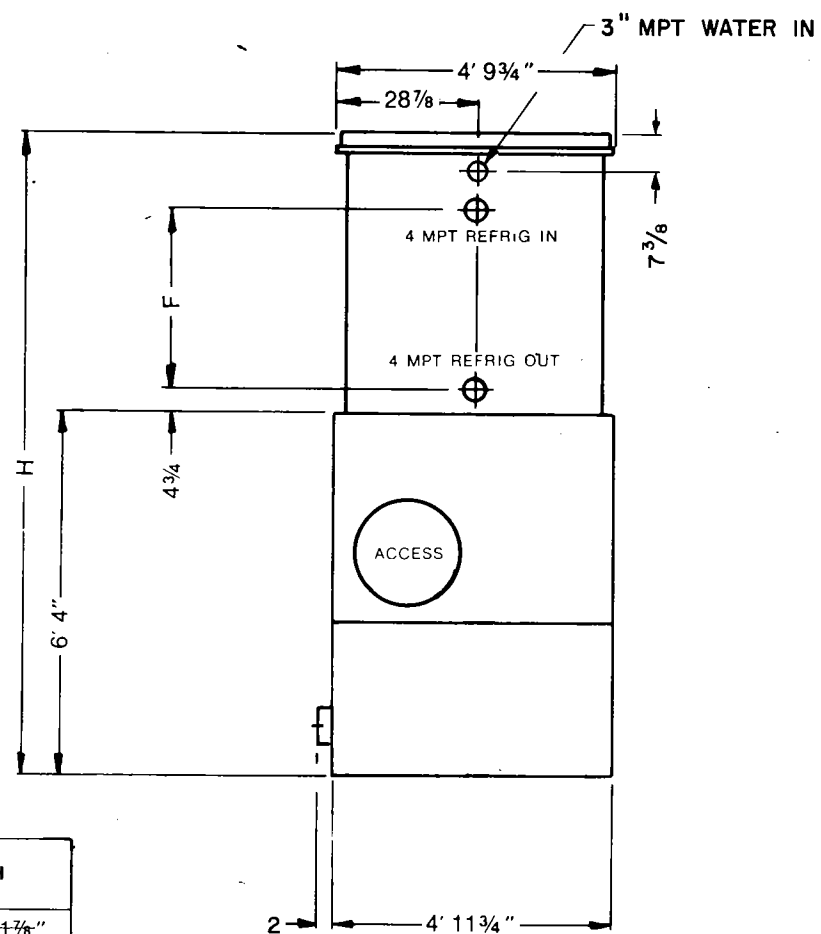
PUMP MOTOR(S): OMIT HP, RPM, phase, hertz, volts,  
 enclosure.

SUBMITTAL DATA: 6 copies For Approval XX For Record  
 4 Parts Lists 4 Rigging Manuals 4 Maintenance Manuals

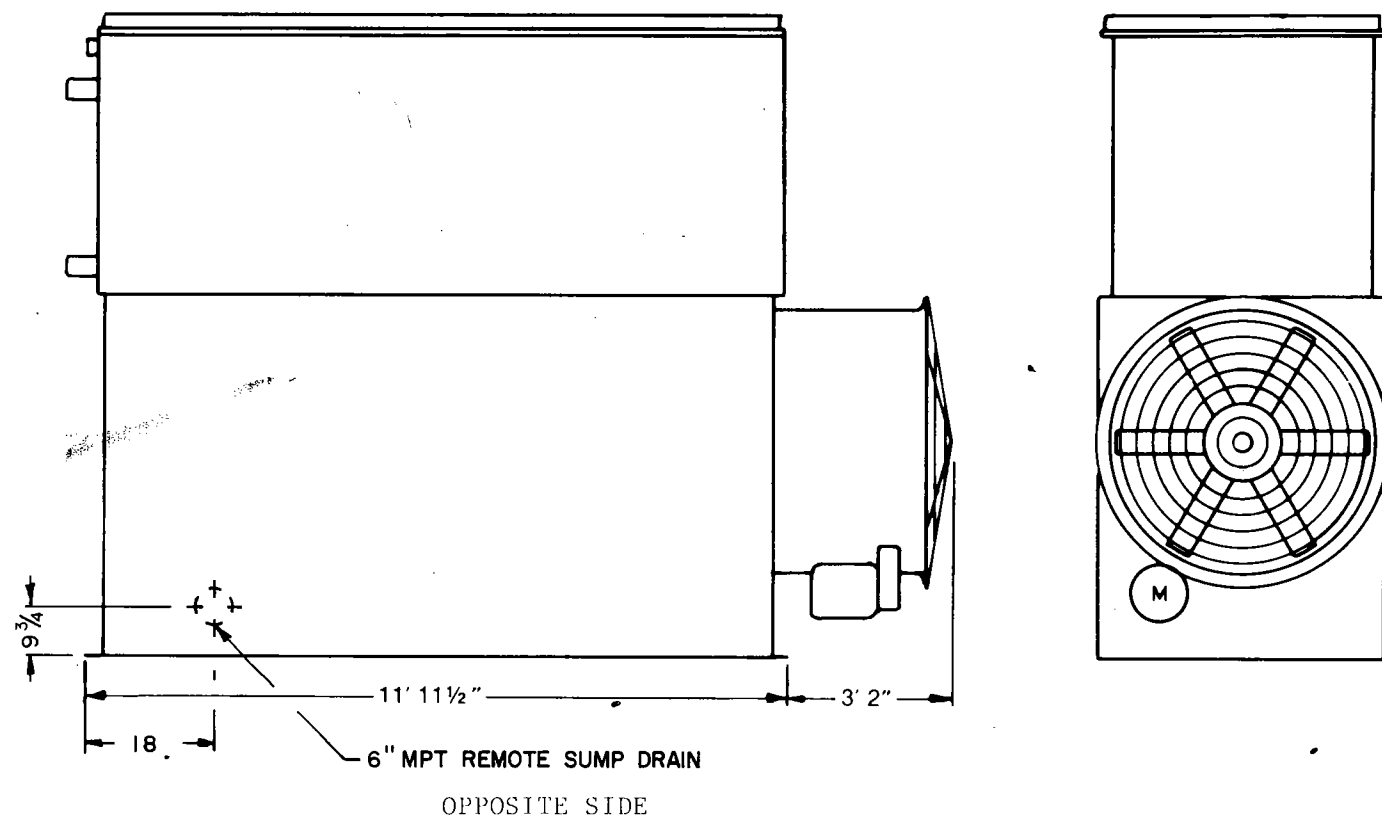
ITEM	DWG.NO.	ITEM	DWG.NO.
<input checked="" type="checkbox"/> Unit dimensions/support data <input checked="" type="checkbox"/> Specifications <input checked="" type="checkbox"/> Remote sump connection, less pumps <input type="checkbox"/> Fan discharge dampers <input type="checkbox"/> Elec. damper controls, V <input type="checkbox"/> Elec. water level controls <input type="checkbox"/> Package <input type="checkbox"/> Switch only <input type="checkbox"/> Elec. pan htr, ( ) KW V, ph, hz, model <input type="checkbox"/> +40°F pan water @ °F ambient <input type="checkbox"/> Steam/hot water coil <input type="checkbox"/> +40°F pan water @ °F ambient	VR9505 Sheet	<input type="checkbox"/> Vibration isolation rails <input type="checkbox"/> Solid bottom panels <input type="checkbox"/> Bottom screens <input type="checkbox"/> Extended lube lines <input type="checkbox"/> Ladder <input type="checkbox"/> Safety cage <input type="checkbox"/> Subcooling coil <input type="checkbox"/> Desuperheater <input type="checkbox"/> Copper sweat fittings <input type="checkbox"/> Special circuits <input type="checkbox"/> PVC eliminators <input type="checkbox"/> Epoxy coated fan wheels	

221 gpm @ 2.0 psig required at water inlet. Unit to be furnished less float valve and strainer.

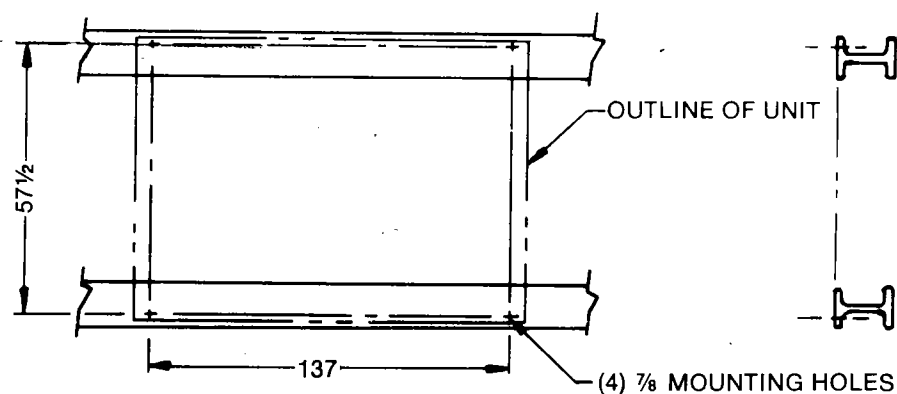
An approved submittal is not required and the above equipment is to be shipped without delay. Your order is being scheduled to ship from our factory approximately 8/21/81.



MODEL NO.	APPROX. SHIPPING WEIGHT	APPROX. OPERATING WEIGHT	F	H
VXMC 138	7130	7610	37 3/4	11' 1 7/8"
VXMC 150	7220	7700	37 3/4	11' 1 7/8"
VXMC 170	8120	8620	48 1/4	12' 0 3/8"



**SUGGESTED SUPPORT DETAILS**



**NOTES:**

- The recommended support arrangement for VX units consists of two parallel I-beams extending the full length of the unit. Supports and anchor bolts are to be designed and furnished by others.
- All supporting beams are to be flush and level at top and must be oriented relative to gage line as shown.
- Recommended design loads for each beam should be 60% of the total unit operating weight applied as a uniform load to each beam. Beams should be designed in accordance with standard structural

- practice. The maximum allowable deflection of beams under the unit shall be 3/8 of an inch.
- All mounting holes are 7/8 inch dia. at the locations shown.
- If vibration isolators are used, a rail or channel must be provided between the unit and the isolators to provide continuous unit support. Additionally the support beams must be designed to accommodate the overall length and mounting hole location of the isolators which may differ from those of the unit. Refer to vibration isolator drawings for these data.

**NOTES:** 1. All dimensions are in feet and inches. Weights are in pounds.

- Unless otherwise indicated, all connections 6 inches and smaller are MPT and connections 8 inches and larger are bevelled for welding.
- Dimensions showing location of coil connections are approximate and should not be used for prefabrication of connecting piping.

B.A.C.  
**ORDER NO.** 81-9263P  
**DATE** 7/16/81

**BALTIMORE AIRCOIL**  
 AFFILIATE OF MERCK & CO., INC.

**EVAPORATIVE CONDENSER**  
**DWG. NO. VR 9505**