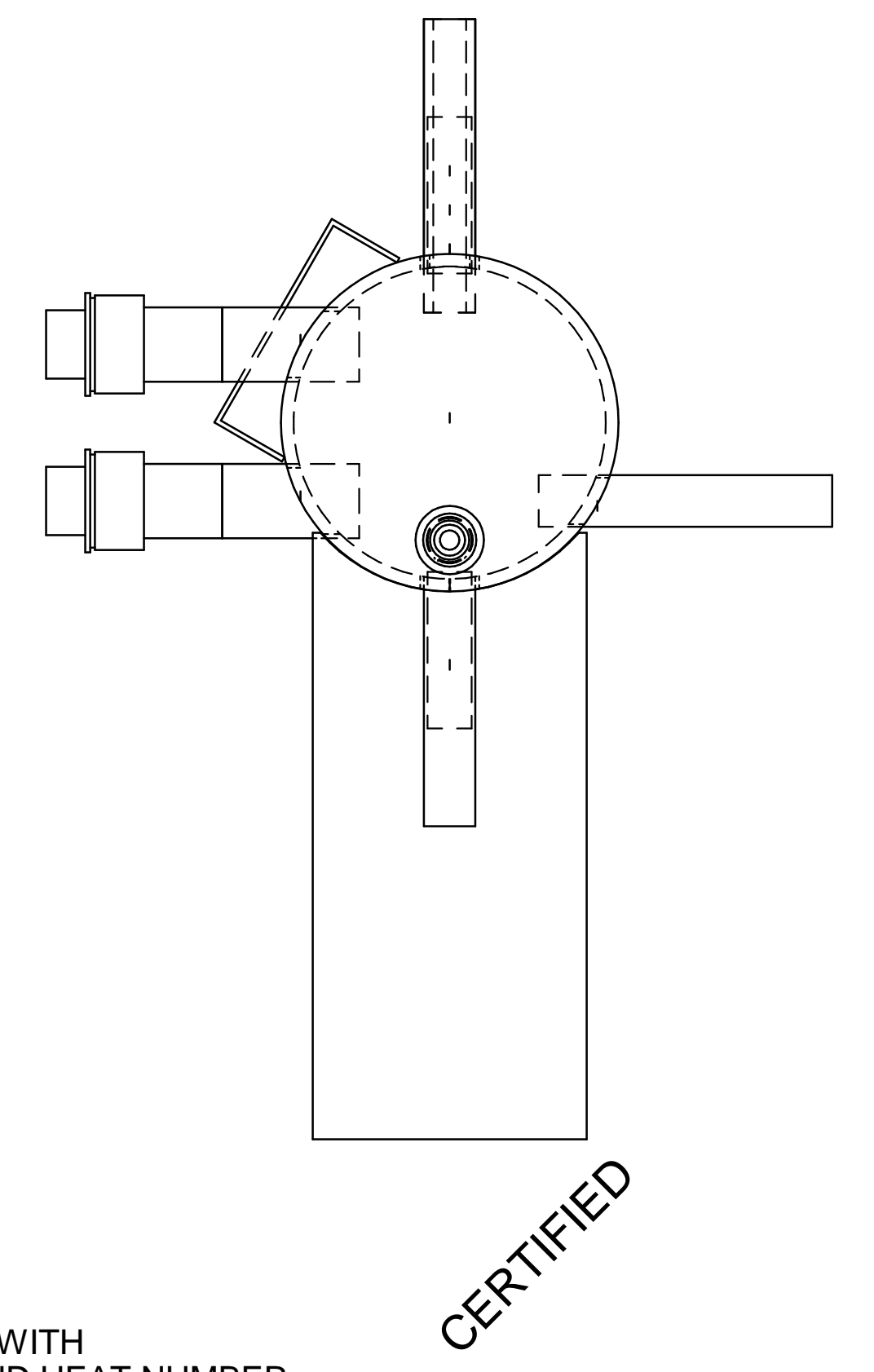
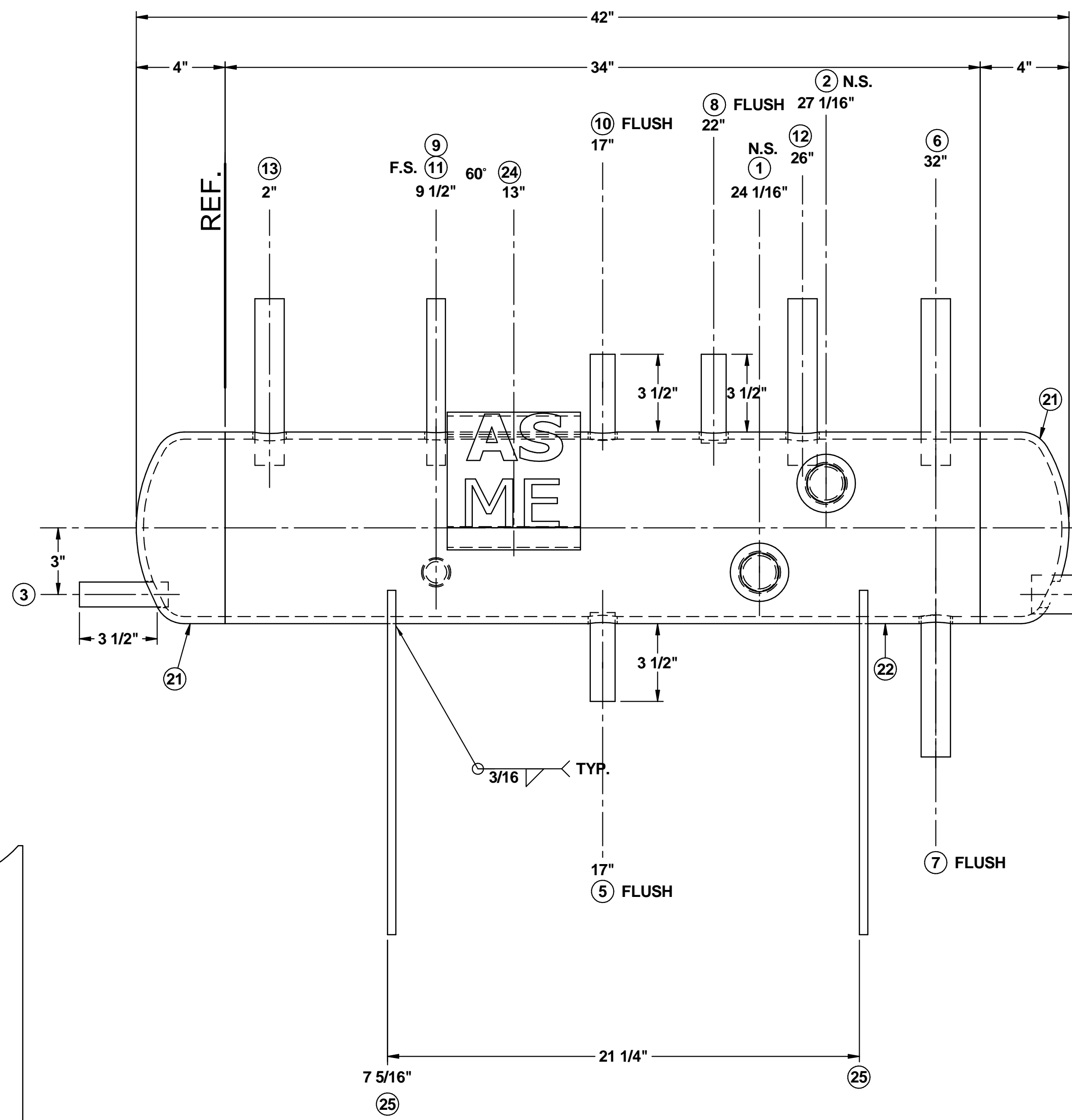
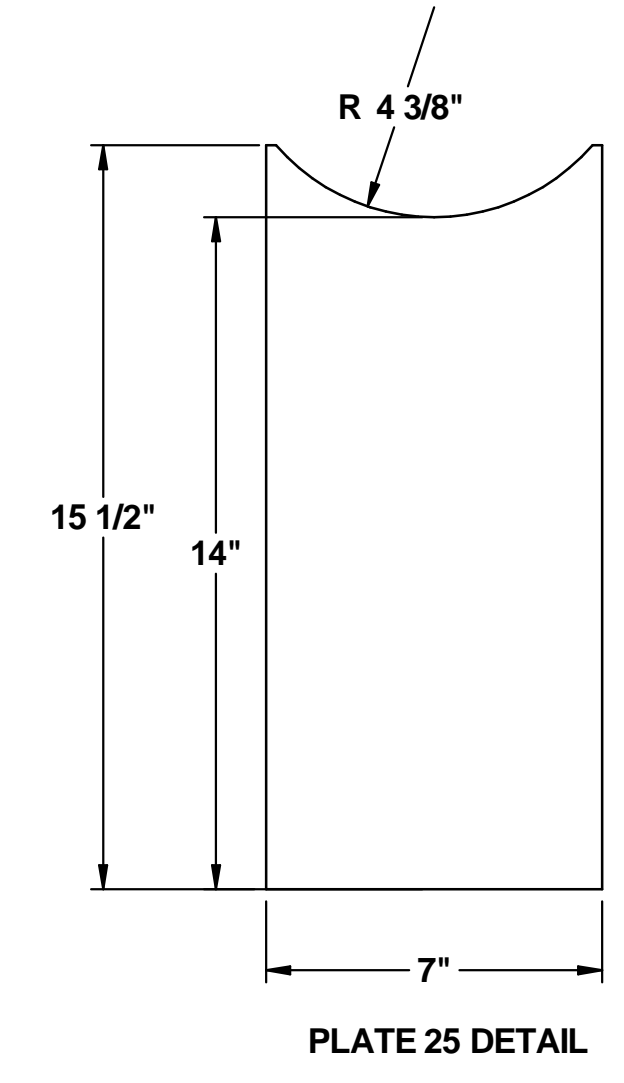
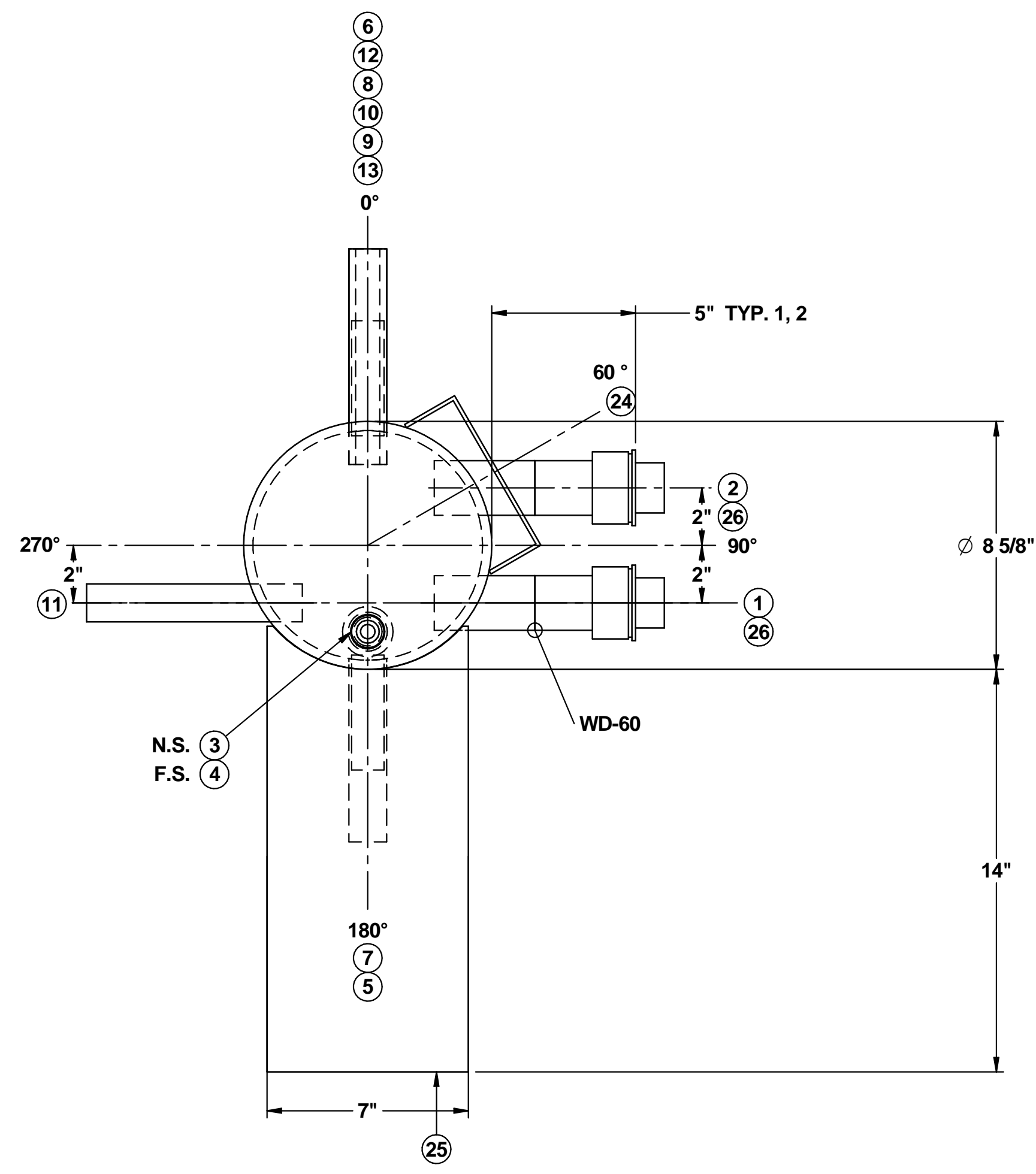
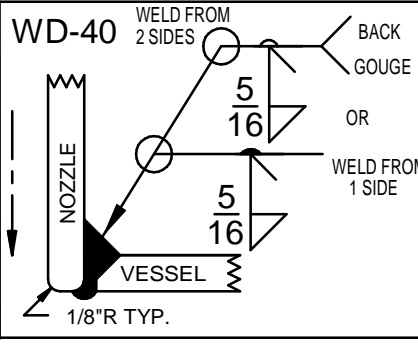
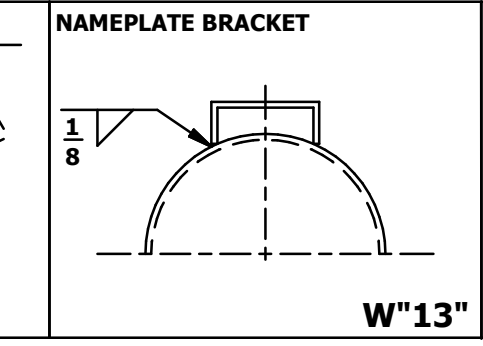
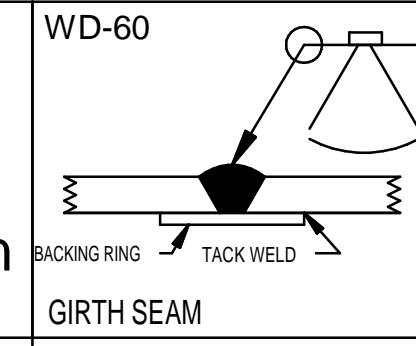
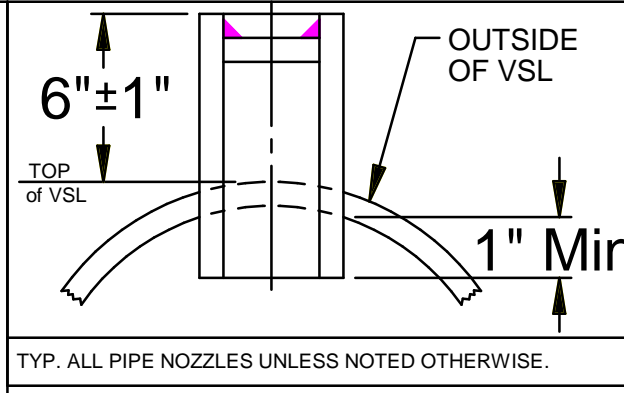


- GENERAL NOTES**
1. WELDING SHALL BE IN ACCORDANCE WITH:  
WPS-1-1 (CARBON STL. TO CARBON STL.)  
WPS-1-8 (CARBON STL. TO STAINLESS STL.)  
WPS-8-8 (STAINLESS STL. TO STAINLESS STL.)
  2. FABRICATION TOLERANCES PER R.V.S. SHOP PROCEDURE No. T-701
  3. ALL WELDS SHALL MEET THE VISUAL ACCEPTANCE CRITERIA OF QAP-704
  4. PRESSURE TESTING SHALL BE IN ACCORDANCE WITH QAP-701 OR QAP-702 AS APPLICABLE
  5. COATING SHALL BE IN ACCORDANCE WITH MAP-606 ONE COAT RED OXIDE PRIMER
  6. BOLT TORQUES SHALL BE IN ACCORDANCE MAP-608
  7. SA53B SMLS PIPE MAY BE SUBSTITUTED FOR SA106B SEAMLESS PIPE
  8. SA516-70 PLATE MAY BE SUBSTITUTED FOR SA36 PLATE.
  9. ALL BOLT HOLES STRADDLE CENTERLINES.
  10. PADS & REPADS SHALL HAVE A 1/4" WEEPHOLE UNLESS OTHERWISE INDICATED ON THE DRAWING



IDENTIFY PIPES WITH COLOR CODE AND HEAT NUMBER.  
RVS JOB NO. 66796

MADWG ARCHIVE\REFRIGERATION VALVES AND SYSTEMS\48000\48900-48999\48952\_48953\48952\_48953.dft

REV.	DATE/BY	DESCRIPTION	CHK'D/DATE
3	NH 2/26/14	DELETED SN 48952	DS 2/26/14
2	CG 12/13/13	NOZZLE 12 WAS OIL INLET. NOZZLE 13 WAS GAS OUTLET. RELEASED FOR FABRICATION	DS 12/13/13
1	CG 12/5/13	REVISED PER CUSTOMER RELEASED FOR FABRICATION	DS 12/5/13
0	CG 11/22/13	RELEASED FOR FABRICATION.	DS 11/27/13

ESTIMATED WIDTH: 21 in	HEIGHT: 29 in
SHIPPING DIMENSIONS LENGTH: 47 in	DRY WEIGHT: 139 lbm

CUSTOMER: **MAYEKAWA USA, INC** PO: **72224**

**VESSEL DESIGN SPECIFICATIONS**  
DESIGN & CONSTRUCTION IN ACCORDANCE WITH SECTION VIII DIV. 1 ASME CODE FOR PRESSURE VESSELS - 2011, EDITION & ADDENDA TO - 2011.

SHELL: t= 0.103" CA: 0  
HEADS: t= 0.102" 0.2818" MIN. AFTER FORMING CA: 0  
M.A.W.P.: 400 P.S.I. PNEUMATIC TEST: 440 P.S.I.  
-50 °F To 250 °F  
RT: LONG/NONE / GIRTH/NONE HT: NONE  
PAINT: SANDBLAST SSPC-SP6, SEE NOTE 5

TITLE: 8 5/8" O.D. x 34" SM/SM ASME 400# HORIZONTAL R507 OIL POT



ITEM	QTY	SIZE	TYPE	RATING	MATERIAL	SERVICE	LENGTH	WD
13	1	1 in	PIPE	S/80	SA106B	OIL INLET	7 1/2 in	WD-40
12	1	1 in	PIPE	S/80	SA106B	GAS OUTLET	7 1/2 in	WD-40
11	1	1 in	PIPE	S/80	SA106B	OIL RETURN	7 1/2 in	WD-40
10	1	0 1/2 in	THD LONG CPLG	3000#	SA105	PSV	4 in	WD-40
9	1	0 1/2 in	PIPE	S/80	SA106B	HOT GAS	7 1/2 in	WD-40
8	1	0 1/2 in	THD LONG CPLG	3000#	SA105	OIL CHARGE	4 in	WD-40
7	1	1 in	PIPE	S/80	SA106B	LEVEL COLUMN	7 1/2 in	WD-40
6	1	1 in	PIPE	S/80	SA106B	LEVEL COLUMN	7 1/2 in	WD-40
5	1	0 1/2 in	THD LONG CPLG	3000#	SA105	DRAIN	4 in	WD-40
4	1	1 in	THD LONG CPLG	3000#	SA105	HEATER	4 in	WD-40
3	1	0 1/2 in	THD LONG CPLG	3000#	SA105	TEMP TRANSMITTER	4 in	WD-40
2	1	1 1/2 in	PIPE	S/80	SA106B	SIGHT GLASS	3 1/2 in	WD-40
1	1	1 1/2 in	PIPE	S/80	SA106B	SIGHT GLASS	3 1/2 in	WD-40

ITEM	QTY	SIZE	TYPE	RATING	MATERIAL	SERVICE	LENGTH	WD
26	2	H1100-RN	REFLEX LEVEL INDICATOR W/SHIPPED LOOSE FROST SHIELDS	HANSEN	SA36			
25	2	7 in	PLATE	0 3/8 in	SA36		15 1/2 in	
24	1	6 in	STD NAMEPLATE BRKT	10 GA.	SA36		2 in	W-13
23	2	8 in	BACKING RING		SA414			
22	1	8 in	PIPE SHELL	S/40	SA106B		34 in	
21	2	8 in	B.W. PIPE CAP	S/40	SA234-WPB			WD-60

**CERTIFIED BY**  
REFRIGERATION VALVES and SYSTEMS CORPORATION  
BRYAN, TEXAS

**TEST WITH:**  
**AIR**

**HYDRO NOTES:**  
1) ESTIMATED VOLUME: 9 GALLONS.

MAXIMUM ALLOWABLE WORKING PRESSURE: 400 PSI AT 250 °F  
MAX. ALLOWABLE EXT. WORKING PRESSURE: X PSI AT X °F  
MINIMUM DESIGN METAL TEMPERATURE: -50 °F 400 PSI

S/N: 48953 YEAR: 2013

SHELL THK: In HEAD THK: In U.S. GAL: SO.FT.SURF: In

DRAWN BY: CG 11/22/13	SCALE: 1:4	DWG. NO. 48952	REV. 3
CHK'D BY: DS 11/27/13	SN: 48953		