

Waukesha 60 Positive Displacement Pump

Mfg: Waukesha

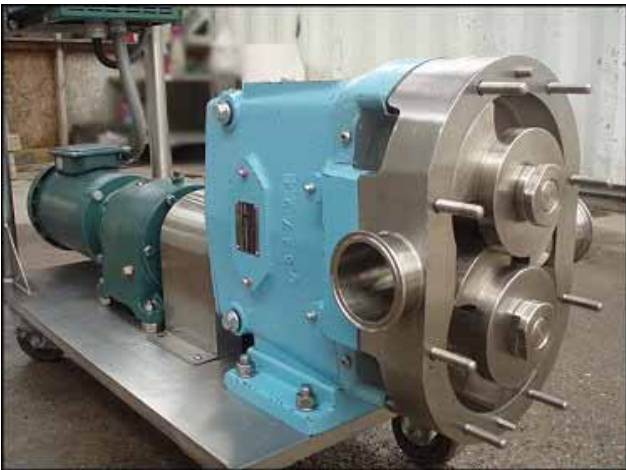
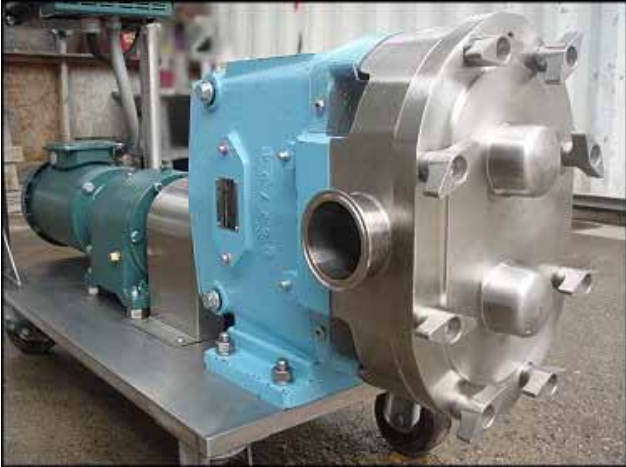
Model: 060

Stock No: DBBP185416.17

Serial No: 153413

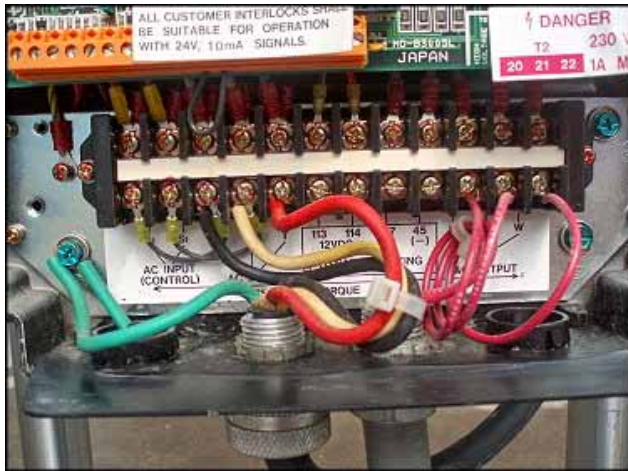
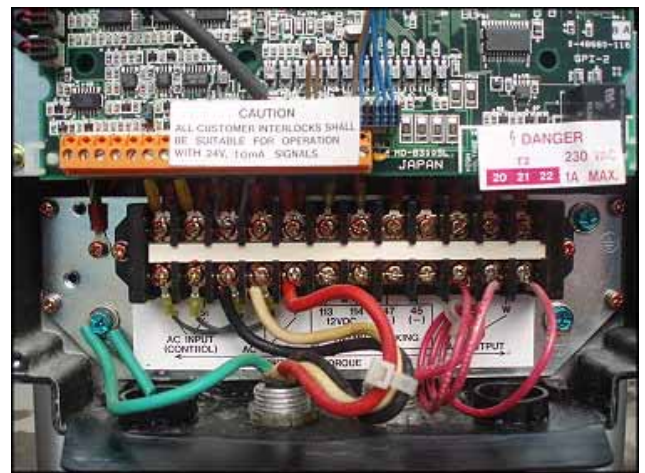
Waukesha Positive Displacement Pump. Model: 060. S/N: 153413. Flow rate for new pump is 90 gpm with required horsepower and pressure. Discuss with salesperson your process and product to determine if this refurbished pump should handle your specific duty. (2) 6-3/8 in. rotors. (1) 2-1/2 in. S-line inlet. (1) 2-1/2 in. S-line outlet. Equipped with Reliance Electric variable frequency drive: 2 hp. 460 AC input volts and 460 AC output volts. 4.2 max amps and 3.4 max amps. 50/60 HZ. 3 phase. Reliance Electric motor drive: 5.0 ratio, 910 in/lb. torque. Reliance Electric motor: 1.5 hp. 1725 rpm. 230/460 volts. 4.4/2.2 amps. 60 Hz. 3 phase. Overall dimensions: 3 ft. 6-1/2 in. L. x 1 ft. 3 in. W. x 3 ft. 5-3/4 in. H.











PROGRAMMABLE FUNCTIONS DATA:

FUNCTION NUMBER	DESCRIPTIONS	PROGRAMMABLE ADJUSTABLE RANGE	INITIAL SETTING	CUSTOMER SETTING
0	Local/Remote Control	0=Local 1=Remote Terminal 2=Remote I/O Port or RS232C	0	
1	Acceleration Time	5.0-360.0 Seconds	20.0	
2	Deceleration Time	5.0-360.0 Seconds	20.0	
3	Minimum Hz	5.0-60.0 Hz	5.0	
4	Maximum Hz	15-Overfrequency Limit (65.0 Hz)	60.0	
5	Current Limit	50-150 % Current	150	
6	Expand to Second Menu (Password Necessary)	0=Basic (First Menu Only) 1=Expand to Second Menu (*1)	0	

See Instruction Manual

(*) For further parameter setting, See GP-2000 Instruction Manual.

NET CODES:

CODES	TYPE OF NET
HV	High Bus Voltage
LV	Low Bus Voltage
OC-A	Overcurrent-A
OC-B	Overcurrent-B
OC-G	Overcurrent-G
OC	Overcurrent
OK	Overload
OH	Overheat
LDP	Line Dip
CPU	CPU Error
Err1	Error 1
Err2	Error 2
FL	Function Loss
CS	Quiet Stop

B

LISTED IND. CONT. EQ 27X1

ALSO CLASSIFIED BY UNDERWRITERS LABORATORIES INC. IN ACCORDANCE WITH IEC PUBLICATION 146.

RELIANCE ELECTRIC

A-C V***S** DRIVE GP-2000
M/N 2GU41002 I/M D2-3166

SER NO 2GU41002-SW-057

2.7 KVA	2 HP @ 0.8PF	ENCLOSURE	TYPE 1
AC INPUT	460 VOLTS	4.2 MAX AMPS	50/60Hz 3 PHASE
AC OUTPUT	460 VOLTS	3.4 MAX AMPS	
SHORT CIRCUIT SYM RMS RATING 25000 AMPS			

RELIANCE ELECTRIC COMPANY, CLEVELAND OHIO 44117 USA
MANUFACTURED BY RELIANCE ELECTRIC LIMITED, JAPAN

Waukesha Fluid Handling

A United Dominion Company

3 02-08

SERIAL NO. 153413 MODEL 050

READ AND UNDERSTAND OPERATION AND MAINTENANCE MANUAL BEFORE OPERATION.

DELAVAN, WI U.S.A.

RELIANCE ELECTRIC E-MASTER

DUTY MASTER® A-C MOTOR

ID	P56X0363P	-TWFR	FJ56C	TYPE P	PH. 3
HP	RPM	VOLTS	AMPS	HZ	SF
1.5	1725	230/460	4.4/2.2	60	1.15

TIME RATING	CONT	INS. CL.	F	INS. TYPE	F+	AMB. C	40	NEMA DESIGN	76	CODE	F
NEMA EFF.	84.0	EFF.				POWER FAC./DR					

TE

ENERGY EFFICIENT

WARNING

HIGH VOLTAGE AND ROTATING PARTS CAN CAUSE SERIOUS OR FATAL INJURY. INSTALLATION, OPERATION AND MAINTENANCE OF ELECTRICAL MACHINERY SHOULD BE PERFORMED BY QUALIFIED PERSONNEL. MAKE SURE THAT THE MOTOR AND EQUIPMENT ARE GROUNDED AND PROTECTED IN ACCORDANCE WITH THE LOCAL AND NATIONAL ELECTRIC CODES. SEE NEMA MG-2 SAFETY STANDARD.

RELIANCE ELECTRIC INDUSTRIAL COMPANY CLEVELAND, OHIO 44117

PLANT #4
MADE IN U.S.A.

DODGE APG

IDENT: M057433001UW
07916356GE

CASE

SIZE	56DM2A	SERVICE FACTOR	1.00
BUT	5.27	AGMA CLASS	
OUTPUT R.P.M.		RATIO	5.0
TORQUE CAP. IN. LBS.	910	LUBE INST.	499972

M85701

RELIANCE ELECTRIC INDUSTRIAL COMPANY CLEVELAND, OHIO 44117