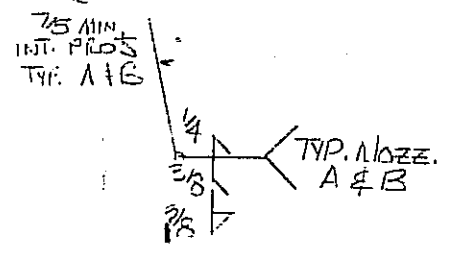
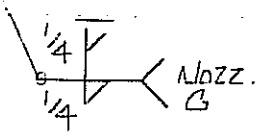


Receiver



115-1720

1987
EL Nickell
Nul.# 34873
S/N. 37654

C-7726

- NOTES:
1. ALL TAIL DIMENSIONS ARE FROM "REF. LINE."
 2. IN-PROCESS EXAMINATION OPENINGS TO BE CLOSED & MARKED PER Q.C. PROCEDURE #EC-704.
 3. ALL NOZZ'S, ETC. TO BE WELDED USING WPS 100-2 OR 145-3 UNLESS OTHERWISE NOTED.
 4. INSIDE OF VESSEL TO BE FREE OF SLAG, SCALE & RUST.
 5. ALL SHARP EDGES TO BE GROUND SMOOTH.
 6. ALL WELD SIZES ARE LEG DIMENSIONS.
 7. ALL REPAIRS TO HAVE 7/16" Ø HOLE.
 8. CLEAN-UP SAND BLAST EXTERIOR & PAINT 1-COAT CAPOX A-85 RED OXIDE PRIMER.

MARK	SIZE	TYPE	RATING	MATR'L.	TYPE	RATING	MATR'L.	QTY.	SERVICE	REINFORCEMENT
M	1/4"	Drain not used.		FCPLG.	3000"	SA-106	B	1	Hydro-Test Drain	
L	1/2"	Purse connect.		PIPE	SCH 80	SA-106	B	1	EQUAL	
K	1/4"			PIPE	SCH 80	SA-106	B	1	LETTER UPPER CONT. COLUMN	
J	1/4"			PIPE	SCH 80	SA-106	B	1	LOWER CONT. COLUMN	
H	1 1/2"			PIPE	SCH 80	SA-106	B	1	HOT GAS	
G	2"	Drain not used		PIPE	SCH 80	SA-106	B	1	OIL DRAIN	
F	3"	Liquid outlet not used		PIPE	SCH 40	SA-516	B	1	SPARE	1/4" x 1 1/2" SA-516-70
E	8"	Thermosphan Return		PIPE	SCH 40	SA-516	B	1	SPARE	1/4" x 1 1/2" SA-516-70
D	3"	Gas Equalizing line		PIPE	SCH 40	SA-516	B	1	VENT	1/4" x 1 1/2" SA-516-70
C	4"	King Valve		PIPE	SCH 40	SA-516	B	1	H.P. LIQUID	5/16" x 1 1/2" SA-516-70
B	8"	Thermosphan supply		PIPE	SCH 40	SA-516	B	1	Thermosphan supply	3/8" x 2 1/2" SA-516-70
A	8"	Condenser Liquid Inlet		PIPE	SCH 40	SA-516	B	1	Liq. Drain	3/8" x 2 1/2" SA-516-70

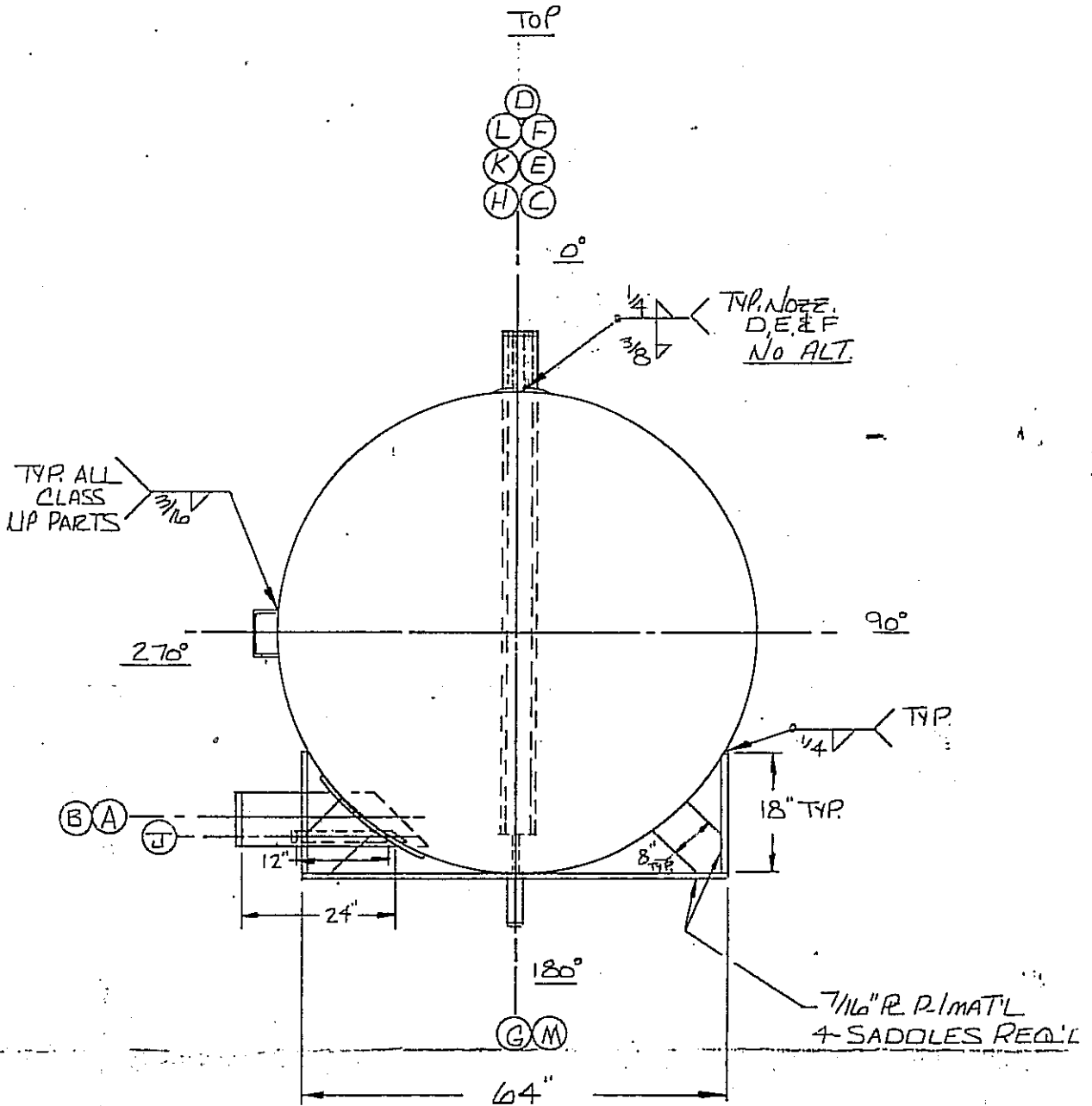
NOZZLE SCHEDULE

Receiver
VESSEL DESIGN SPECIFICATIONS

DESIGN & CONSTRUCTION IN ACCORDANCE WITH SEC. VIII, DIV. 1, ASME CODE FOR UPV. <u>886</u> EDITION & ADDENDA TO <u>12-31-86</u>
DESIGN PRESSURE <u>300</u> PSI. DESIGN TEMP. <u>-20</u> TO <u>+650</u> F.
HYDRO TEST @ <u>450</u> PSI. <u>W/6</u> SPOT <u>16</u> INCH SPOT RADIOGRAPH. E = <u>80%</u>
SHELL MATR'L <u>1/8" SA-516-70</u> TYPE <u>ELLIP</u> MIN. THK. <u>1.781</u> CA <u>0</u>
HD # 1 MATR'L <u>3/4" SA-516-70</u> TYPE <u>ELLIP</u> MIN. THK. <u>1.618</u> CA <u>0</u>
HD # 2 MATR'L <u>3/4" SA-516-70</u> TYPE <u>ELLIP</u> MIN. THK. <u>1.618</u> CA <u>0</u>
SEE DESIGN CALCULATIONS FOR ALTERNATE MATERIAL SPECIFICATIONS THAT MAY BE USED FOR SHELL, HEADS, & REINFORCEMENT.
ELECTRODES: <u>E-8010</u> #102 <u>E-7018</u>
JOINTS: <u>E-7014</u> <u>E-7016</u>
FINISH & INTERNALS: <u>E-7014</u> <u>E-7016</u>
AUTO WIRE: <u>1/6"</u> FLUX: <u>860/1780</u>
TOLERANCES: PER SHOP PROCEDURE, NO. S-482 UNLESS OTHERWISE NOTED ON DRWG.

72" Dia x 288" 5050 cal. @ 100%

Nozz. C



DIMENSIONS ARE FROM "REF. LINE."
S EXAMINATION OPENINGS TO BE
MARKED PER Q.C. PROCEDURE

S, ETC. TO BE WELDED USING WPS
145-3 UNLESS OTHERWISE NOTED.
VESSEL TO BE FREE OF SLAG,
DUST.
EDGES TO BE GROUND SMOOTH.

LD SIZES ARE LEG DIMENSIONS.
PADS TO HAVE 7/16" Ø HOLE.
IP SAND BLAST EXTERIOR & PAINT
T-COPY A-851 RED OXIDE PRIMER.

288" O.A.L. - APPROX.

"REF. LINE"

20 5/8" APPROX.

1/2" R.P. 1 MAT'L
4"x6" HI LIFT LUG
2-REQ'D

TYP. NOZZE.
H, J, K, & L NO ALT.

72 7/8" LG.

5/8" MIN.
INT. PROS. TYP. D & E

15 1/4" (D)

5 1/4" (L)

87 1/4" (F)

123 1/4" (K)

159 1/4" (E)

195 1/4" (H)

24" 1/4" TYP.

6" TYP.
C, D, E, F, G, H,
K & L

1/4" TYP.
D, E, & F

4" HI DATA R.
BRKT. SA-316

72" I.D.

8" TYP.

32 1/4"

28 1/2" TYP. A

CON TOUR (J)

7 1/2"

30" FLUSH (M)

48 3/4" (A)

82"

164 1/2"

197 3/4" (B)

5/16" TYP. A, C
& B

(G) FLUSH

1/4" NOZZ. (C)

7/8" MIN.
INT. PROS.
TYP. A & E

1/4" NOZZ. (M)

288" O.A.L. APPROX.

246 1/2" SHELL LENGTH

MAT'L HI LIFT LUG EQ'D

TYP. Nozz. H, J, K, & L NO ALT.

5/8" MIN. INT. PROS. TYP. D & E

72 7/8" LG.

TYP.

6" TYP. C, D, E, F, G, H, K & L

TYP. D, E, & F

No.

MATERIAL SA-36

72" I.D.

28 1/2" TYP. A & B

5/16" x 1/2" BAR BRACE, SA-36 TYP. C & F

Contour J

USH

TYP.

48 3/4"

82"

16 1/2"

197 3/4"

239"

TYP. SEAM 115-112-C

Nozz M

TYP. A, C & B

FLUSH

Nozz. G

7/8" MIN. INT. PROS. TYP. A & B

TYP. Nozz.

