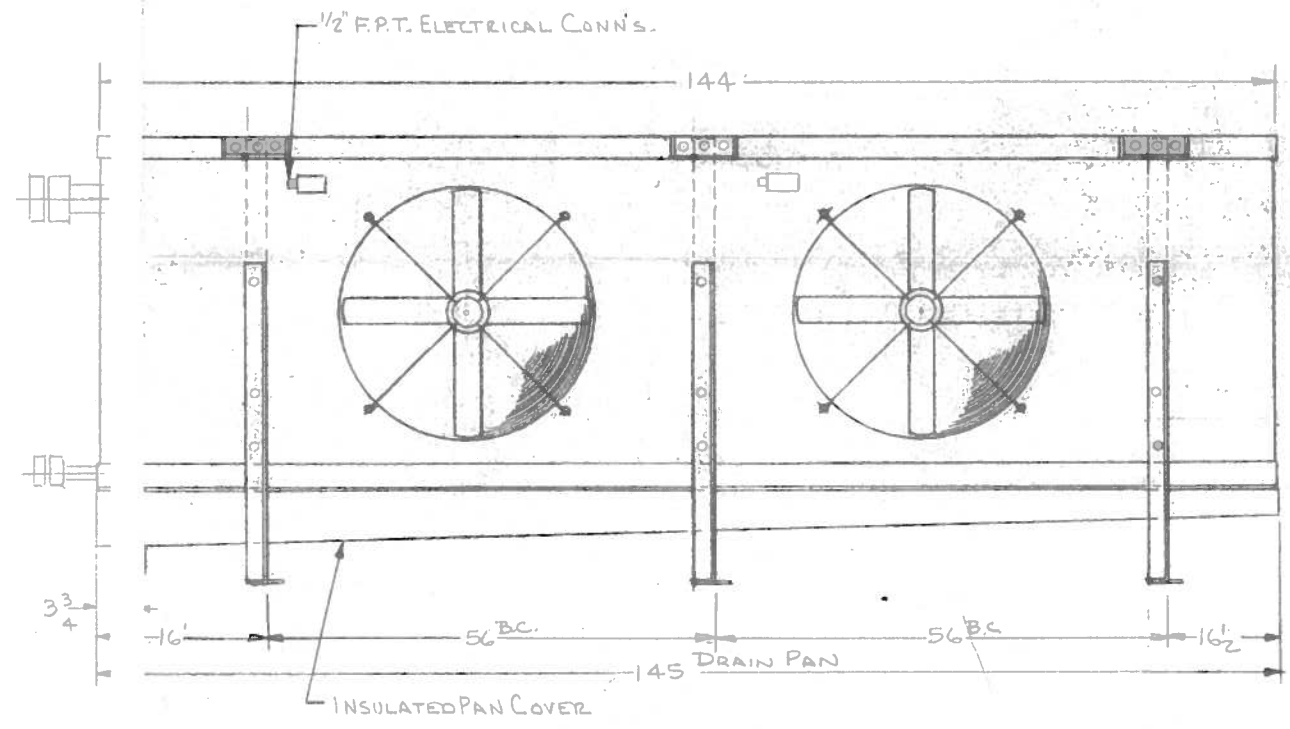
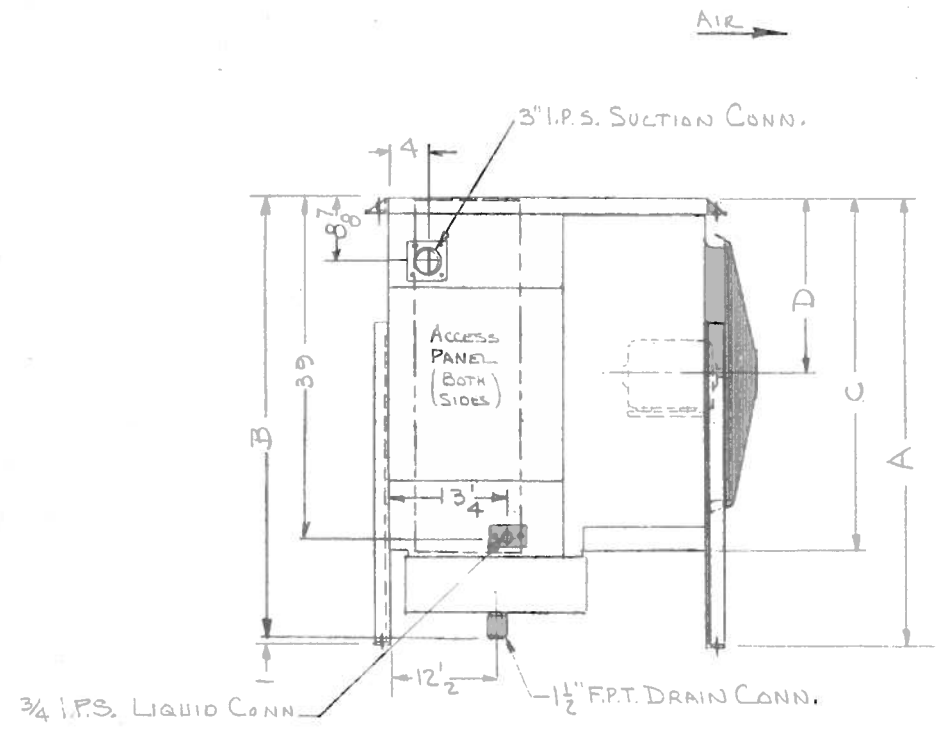
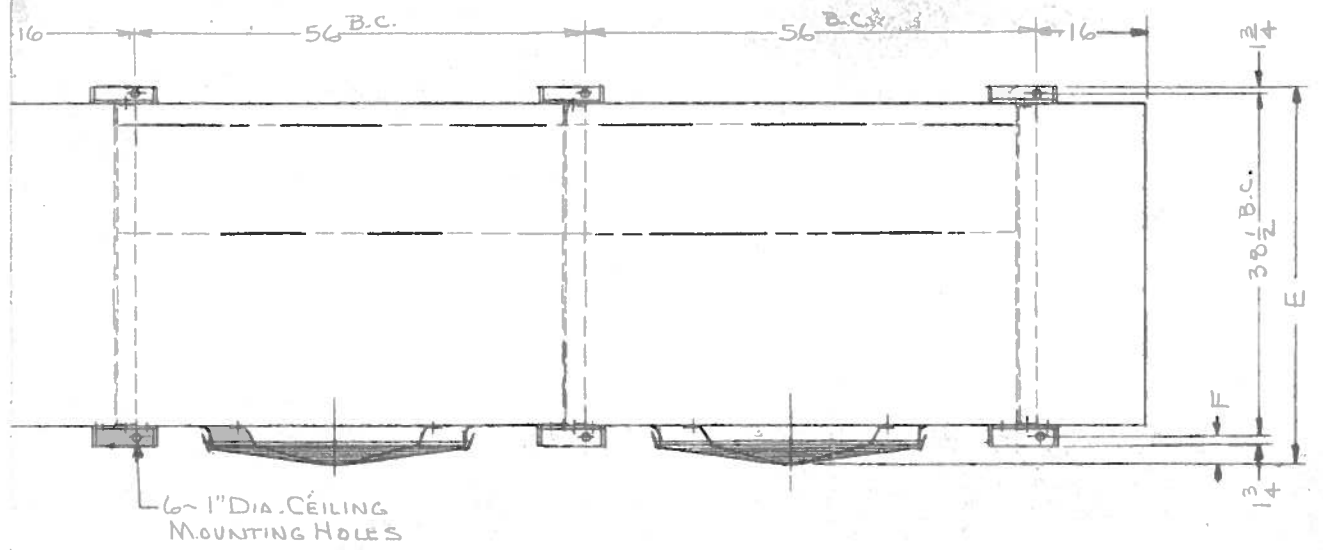
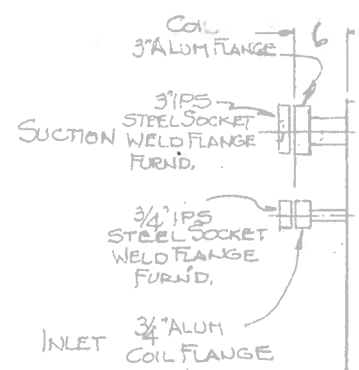


SUGGESTED PIPING
 — PIPING BY KRACK
 - - - PIPING BY OTHERS
 CV = CHECK VALVE



COIL: ALL ALUMINUM
 REFRIG: RECIRC. AMMONIA BOTTOM FEED
 DEFROST: HOT GAS COIL & PAN
 UNIT: CONSTRUCTED OF MILL FINISH GALV'D SHT. STEEL
 LEGS ARE REMOVEABLE IF DESIRED

TAG: STORAGE FREEZER

F.E.S. SOUTHWEST INC.
 P.O.# KRK-0217

③ R

536-538	78	77	67	33 1/2	47 3/8	7 1/8
466-468	69 1/2	68 1/2	58 1/2	29 1/2	47 3/8	7 1/8
406-408	61	60	50	25	46 5/8	7 1/8
366-368	57	56	45 3/4	22 7/8	46 5/8	7 1/8
336-338	52 1/2	51 1/2	41 1/2	20 3/4	46 1/2	7 1/8
306-308	48	47	37 1/4	18 5/8	46 1/2	7 1/8

UNIT CIRCUITED FOR 4 TO 1
 RATE OF RECIRCULATION
 WITH PUMPED LIQUID SUBCOOLED
 TO EVAPORATOR REFRIGERANT

1/2 HP 1160 RPM 1460/60/3 O.D.P. MOTORS
 APPROX. WT: 2200
 BTU/H 172000
 CFM 22400
 COIL TEMP. -35°F
 ROOM TEMP. -20°F

**WORK TO DIMENSIONS
 DO NOT SCALE PRINT**

**TOLERANCES
 UNLESS OTHERWISE SPECIFIED FOLLOW:
 FRACTIONAL ± 1/2
 ONE PLACE DEC. (.0) ±
 TWO PLACE DEC. (.00) ±
 THREE PLACE DEC. (.000) ±
 ANGULAR ±
 TOLERANCES ARE NOT CUMULATIVE.**

THIS DRAWING IS THE PROPERTY OF KRACK CORP. AND IS SUBJECT TO RETURN UPON REQUEST. IT IS TO BE USED ONLY FOR THE PURPOSE FOR WHICH IT WAS EXPRESSLY LOANED.

REV.	DATE	BY	APP.	DESCRIPTION
1	10-26-56	J. R. Lewis	ASB	REVISED
2	11-1-56	Gen. Rev.	ASB	REVISED

MATERIAL: AS NOTED
 FINISH: AS NOTED
 SCALE: 1" = 1'-0"
 TITLE: CEILING TYPE AXIAL FLOW REFRIG. COIL

MOD. LA306 4-1/2 REFRIG. JOB NO. 337841