

Groen Carmel Popcorn Coating Line

Mfg: Groen

Model:

Stock No.: DFLQ450.176

Serial No.:

1990 Groen Carmel Popcorn Coating Line. Rated at 4,000 lbs/hour of total production. Groen coating screw system, all stainless steel, all rebuilt. Does not include tanks.



1994 Groen Continuous Ribbon Blender and Coater- 30 cu. ft.

Mfg: Groen

Model: CSB-18184

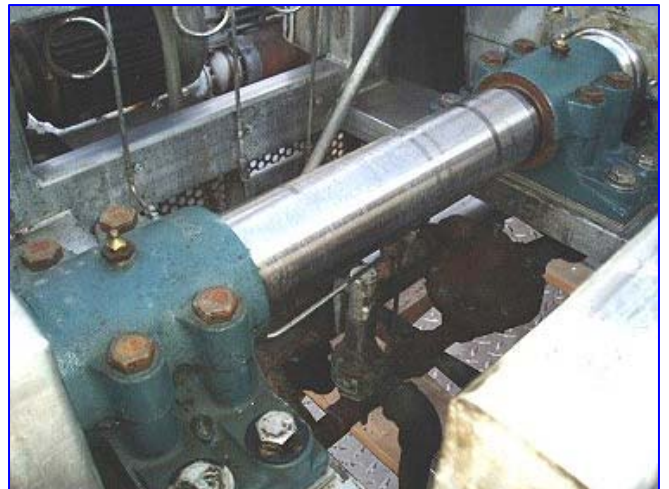
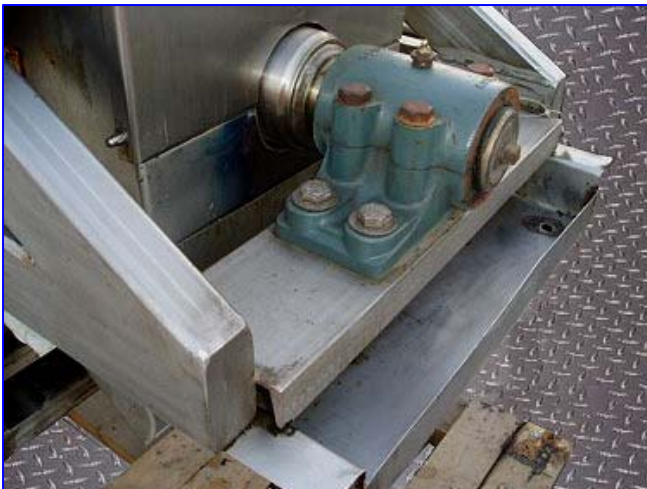
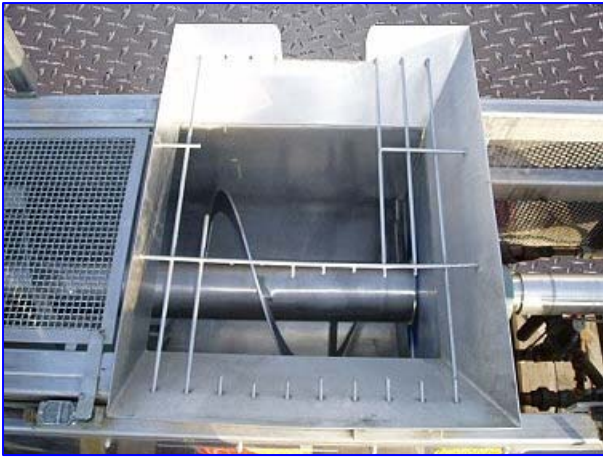
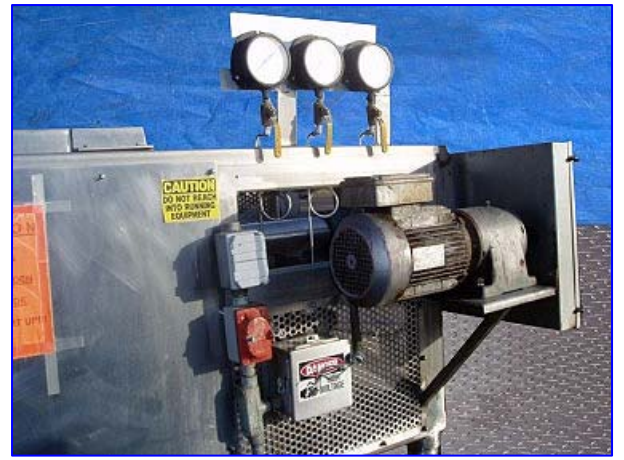
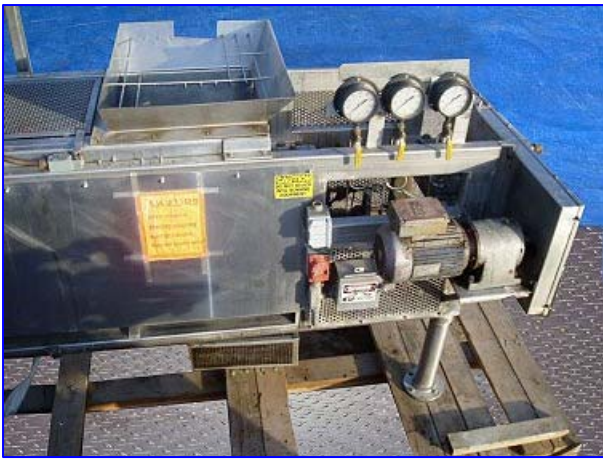
Stock No. DFLQ002.

Serial No. 100103-1

1994 Groen Continuous Ribbon Blender and Coater- 30 cu. ft. Model : CSB-18184. S/N: 100103-1. Nat'l Bd: 139008. Dwg No's: C6796-40 & C6796-41. MAWP @ 353 °F: 120 psi. MDMT @ 120 psi: -20 °F. Infeed hopper dimensions: 30 in. L x 23 in. W. Screw auger housing dimensions: 18 in. dia. x 14 ft. 4 in. L. Auger housing diameter: 19 in. Equipped with (4) removable flip-top lids for easy maintenance. Sew-Eurodrive Motor, 3 hp, 1680 rpm, 230-460 V, 13.6 - 6.8 amps, 60 Hz, 3 phase. Sew-Eurodrive Gear Drive, 4.34 ratio, 392 rpm (final). Inlets: (1) 1 in. dia. refrigerant pipe, (1) 20 in. L x 19 in. W infeed. Outlets: (1) 1 in. dia. refrigerant discharge, (1) 19 in. W x 8 in. H discharge chute. Overall dimensions: 20 ft. 9 in. L x 45 in. W x 68-1/2 in. H. Previously used by Frito-Lay to make caramel-coated Cracker Jacks.







■ **Continuous Screw Blenders:**

■ **Model CSB**



Groen Continuous Screw Blender and Coater. Model CSB. Is idea for coating popcorn and can be used to process a variety of products requiring continuous mixing and uniform coating. The Model CSB can be sized to meet your product residence time and throughput requirements and is equipped with an appropriate flight screw for proper particulate mixing and coating action. The trough shaped shell is normally fitted with a high pressure jacket, designed for either heating or cooling applications.

The CSB Screw Blender is sized for caramel corn or snack food production requirements by trough diameter and length. The Model 12/180 is 18" in diameter, 180" long, and capable of coating up to 6,500 pounds of popcorn per hour. A variety of other processing applications can be accommodated with the addition of custom designed and optional features.

Soized To Your Production Requirement:

Diameter	Length	Capacity popcorn lbs/hr	Capacity popcorn lbs/hr @ 3:1 Ratio	Capacity popcorn lbs/hr @ 4:1 Ratio	Capacity popcorn lbs/hr @ 5:1 Ratio
9"	96"	175	1300	1600	1900
12"	120"	300	2200	2700	3200
14"	140"	420	3000	3800	4500
16"	160"	590	4100	5100	6100
18"	180"	710	5200	6500	7700
24"	240"	1280	9200	11600	13900

Groen Electrical Control Panel. S/N: 302483. Panel is equipped with a Honeywell Truline Temperature Chart Recorder, Model: UDC3000 Versa-Pro, S/N: 94404418327700001. Variable speed controls available with the panel include controls for: feed pump, rotor coater drive, caramelizer agitator, finish pump, and popcorn feed rate. Digital displays include: flowmeter rate and caramelizer temperature. Overall dimensions: 48 in. L x 46 in. W x 11 in. H.

