

1993 York International Chiller Barell- 185 Ton

Mfg: York

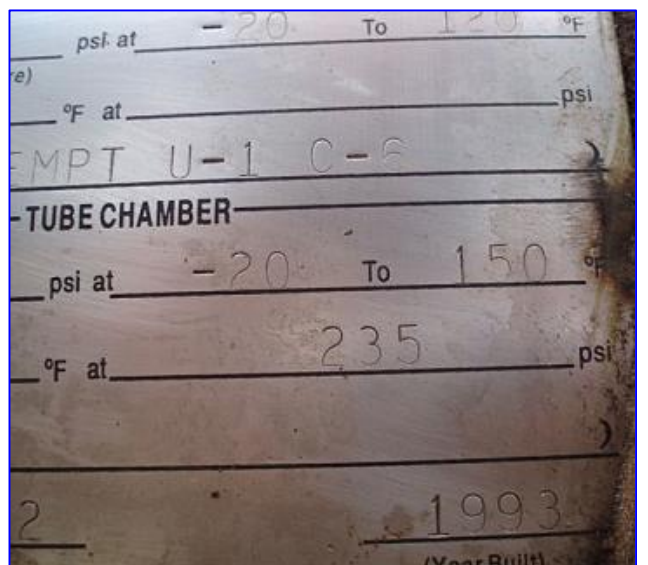
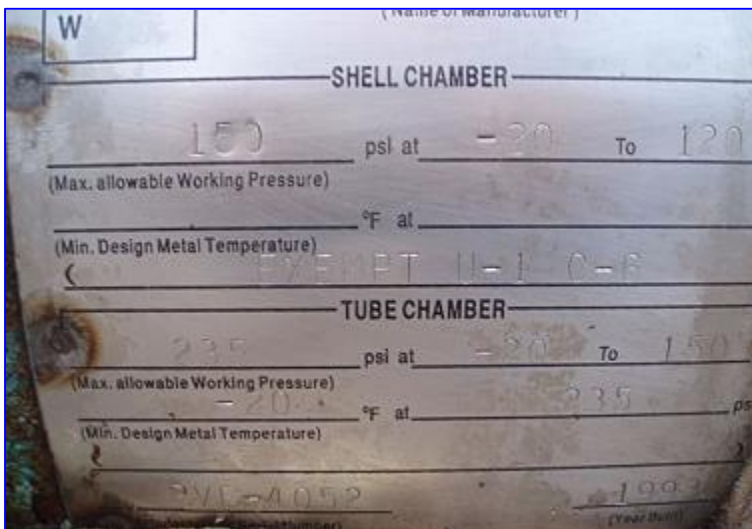
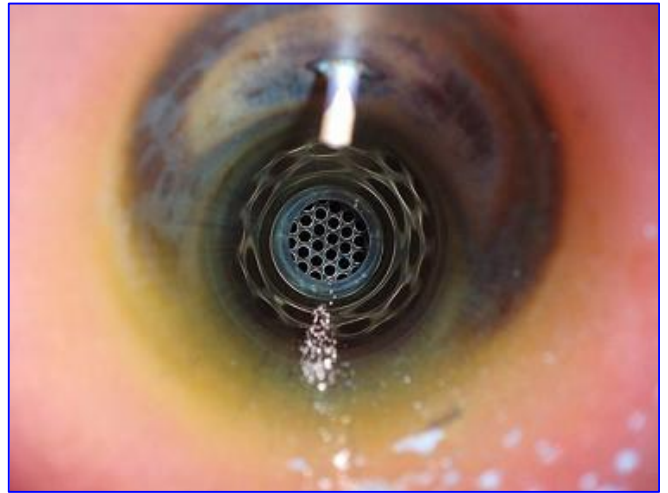
Model:

Stock No. DKI02B.

Serial No. PVE-4052

1993 York International Chiller Barell- 185 Ton. S/N: PVE-4052. Nat'l Bd: 2302. Refrigerant: R-22. Shell side MAWP: 150 psi @ -20 to 120 °F. Shell side MDMT: EXEMPT U-1 C-6. Tube side MAWP: 235 psi @ -20 to 150 °F. Shell side MDMT: -20 °F @ 235 psi. Inlets: (2) 1-1/2 in. dia. refrigerant infeed ports, (1) 8 in. dia. port. Outlets: (2) 3 in. dia. refrigerant discharge ports, (1) 8 in. dia. port. Overall dimensions: 14 ft. 2 in. L x 3 ft. W x 2 ft. 7 in. H.





TUBE CHAMBER

235 psi at _____
(Max. allowable Working Pressure)

-20 °F at _____
(Min. Design Metal Temperature)

PVE-4052
(Manufacturer Serial Number)

NAT'L BD. 2302
(National Board Serial Number)

CERTIFIED BY
YORK INTERNATIONAL, S.A. DE C.V.
(Name of Manufacturer)

SHELL CHAMBER

150 psi at -20 To 120 °F
(allowable Working Pressure)

°F at _____ psi
(Design Metal Temperature)

TUBE CHAMBER