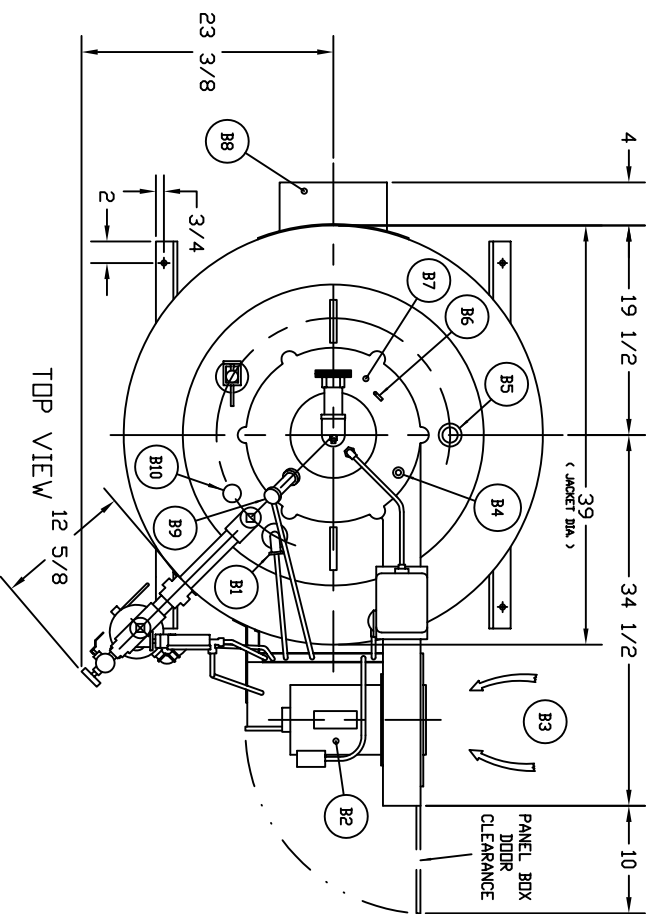
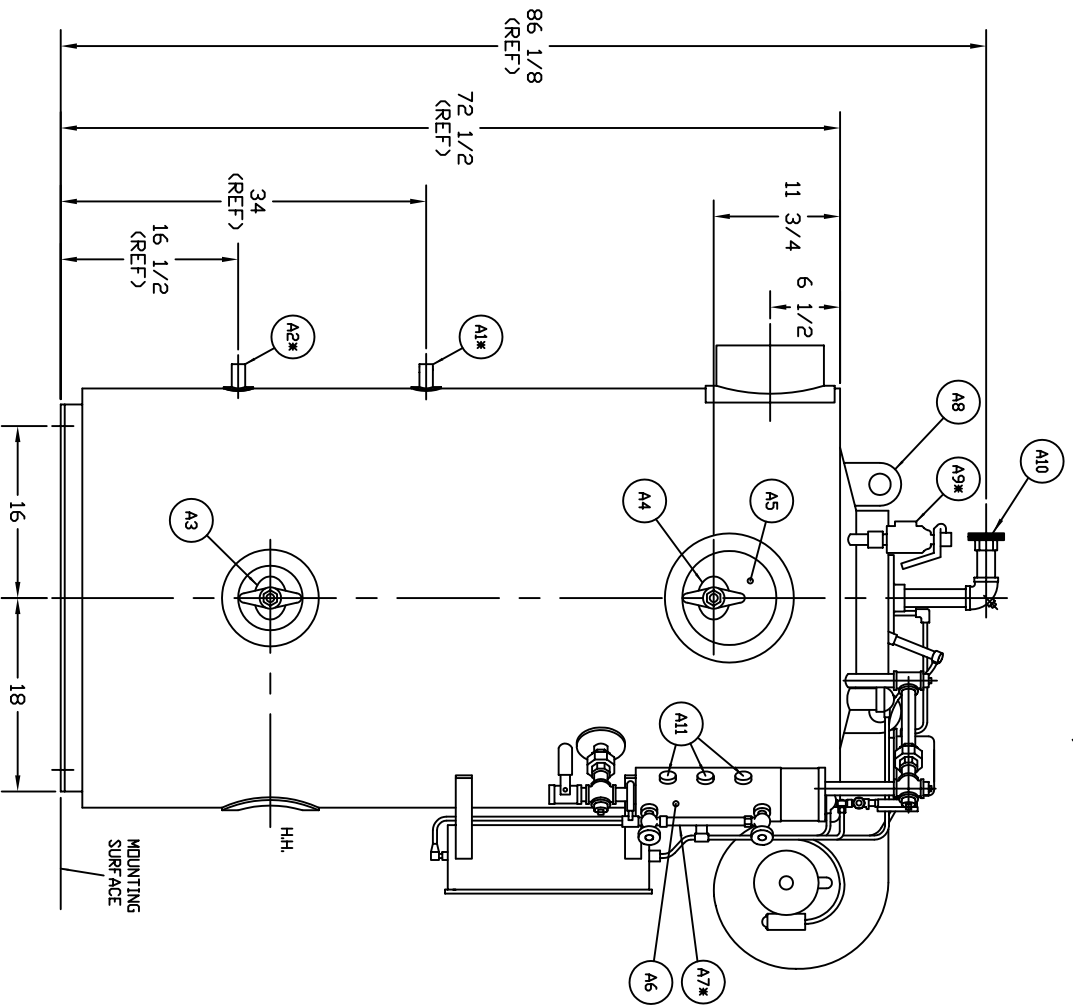


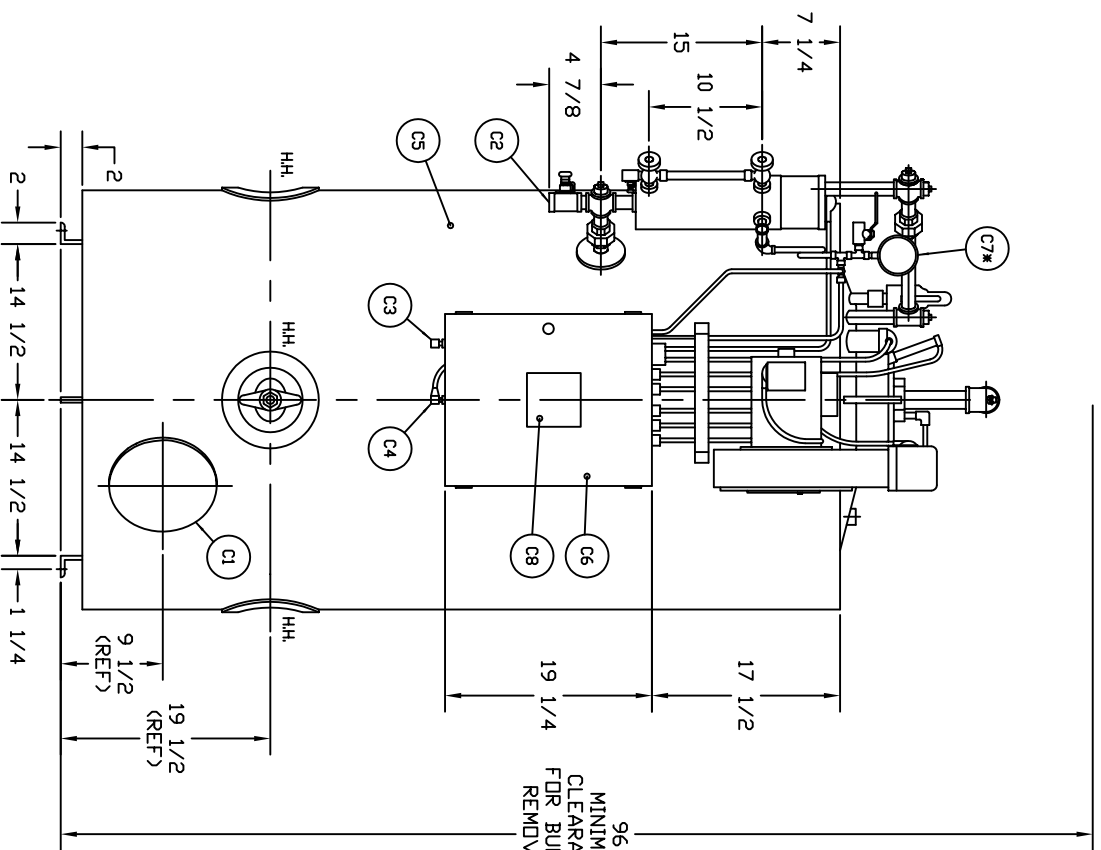
PARTIAL SIDE VIEW



TOP VIEW



SIDE VIEW



FRONT VIEW

- NOTES:
1. STEAM OUTPUT LB/HR.: FROM 0 PSIG AT 212°F. (0 KG/CM AT 100°C)
 2. DUE TO POWER RATINGS, COMPONENT SIZES, TYPES, QUANTITIES, ETC... PANEL BOX SIZE MAY VARY FROM WHAT IS SHOWN, & PRESSURE/CONTROL BOX THAT ARE UNUSED, WILL BE CAPPED.
 3. WE RESERVE THE RIGHT TO CHANGE SPECIFICATIONS AND/OR DIMENSIONS.

REVISIONS		CHECKED	APPROVAL
LTR	DESCRIPTION	C.M.	L.D.
A	UPDATED TABLE B.S. 17 JAN 2005	1/17/05	1/17/05

- A - LEFT SIDE ELEVATION VIEW**
- A1 - 1" FEED WATER SUPPLY INLET (LEA CHECK & BALL VALVE SUPPLIED)
 - A2 - 1 1/4" BLOWOFF OPENING ("Y" & BALL VALVE SUPPLIED)
 - A3 - LOWER 3" x 4" HANDHOLE AND COVER ASSEMBLY (TYP 3 PL)
 - A4 - UPPER 3" x 4" HANDHOLE AND COVER ASSEMBLY
 - A5 - ASME CODE P.V. STAMPING AREA
 - A6 - WATER COLUMN
 - A7 - SIGHTGLASS ASSEMBLY
 - A8 - LIFTING EYE
 - A9 - SAFETY VALVE NOMINAL SIZE OF 1" INLET 1 1/4" OUTLET
 - A10 - 1 1/4" GAS MANIFOLD CONNECTION
 - A11 - TRICOCKS (3 OPTIONAL)
- C - FRONT ELEVATION VIEW**
- C1 - 6" DIA. CLEANOUT OPENING WITH 10" DIA. COVERPLATE
 - C2 - 1" DRAIN (BALL VALVE)
 - C3 - 10 OPERATING PRESSURE CONTROL
 - C4 - 10 HIGH LIMIT PRESSURE CONTROL
 - C5 - STEEL JACKET
 - C6 - CONTROL PANEL BOX (SEE NOTE 2)
 - C7 - STEAM GAUGE ASSEMBLY (W/ D.P.C. AND HIGH LIMIT CONN.)
 - C8 - WINDOW KIT

- B - TOP VIEW**
- B1 - 1/2" LOW WATER PROBE
 - B2 - BURNER MOTOR
 - B3 - AIR INTAKE (COMBUSTION)
 - B4 - FLAME VIEW PORT
 - B5 - STEAM OUTLET OPENING OF 1 1/2"
 - B6 - AIR DAMPER HANDLE (COMBUSTION)
 - B7 - TOP PLATE
 - B8 - 10" DIA. MALE EXHAUST STACK OPENING STD
 - B9 - UV SCANNER
 - B10 - 1 1/4" SURFACE BLOWDOWN CONN. (1" WITH DIP/TUBE)

- D - PARTIAL SIDE VIEW**
- D1 - DAMPER PLATE
 - D2 - AIR GATE PLATE
 - D3 - BLOWER SCROLL
 - D4 - 6KV IGNITION TRANSFORMER

DESCRIPTION	VALUE
FUEL GAS	
MAXIMUM ALLOWABLE WORKING PRESSURE:	150 PSIG
BOILER INPUT:	836,875 BTU / HR
BOILER OUTPUT:	669,500 BTU / HR
STEAM OUTPUT & MIN. SRV CAP.:	690 LB/HR (SEE NOTE 1)
NET EFFECTIVE HEATING SURFACE:	60 SQ. FT.
WATER CAPACITY (OPERATING):	77 GAL (U.S.)
APPROXIMATE SHIPPING WEIGHT:	3400 LBS
APPROXIMATE OPERATING WEIGHT:	4042 LBS
BURNER MOTOR HP:	1/3 HP.

* COMPONENTS SHIPPED LOOSE WITH BOILER



The Fulton Companies
8981 Port Street, Box 527
Fulshei, New York, USA 13424

CLASSIC 20 HP.
GAS FIRED STEAM BOILER
(HIGH PRESSURE)

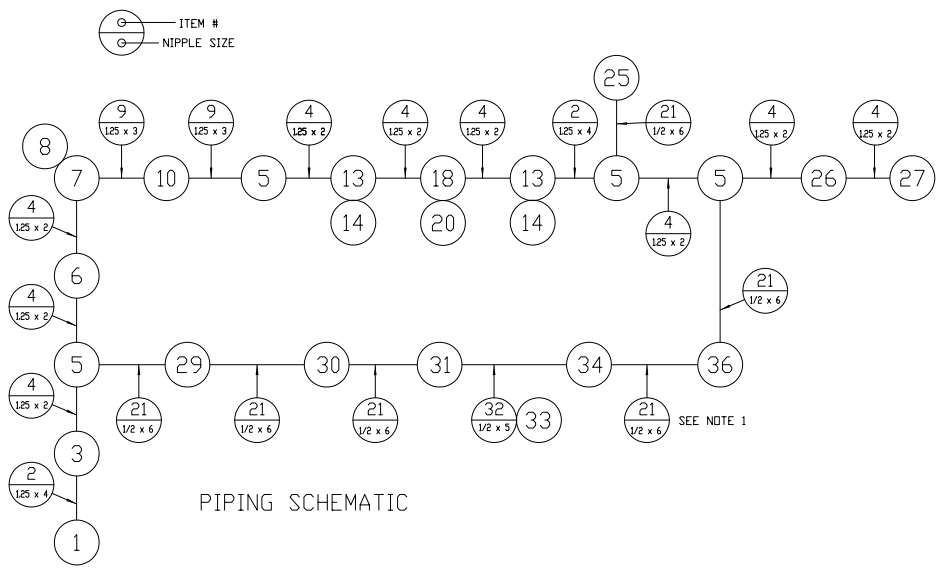
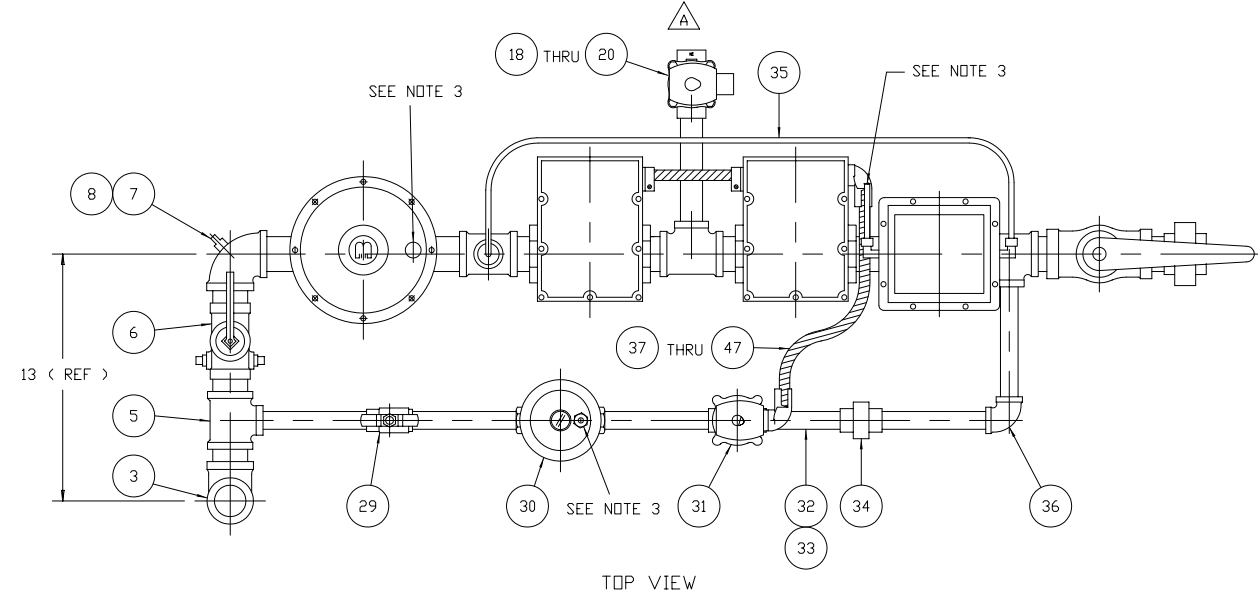
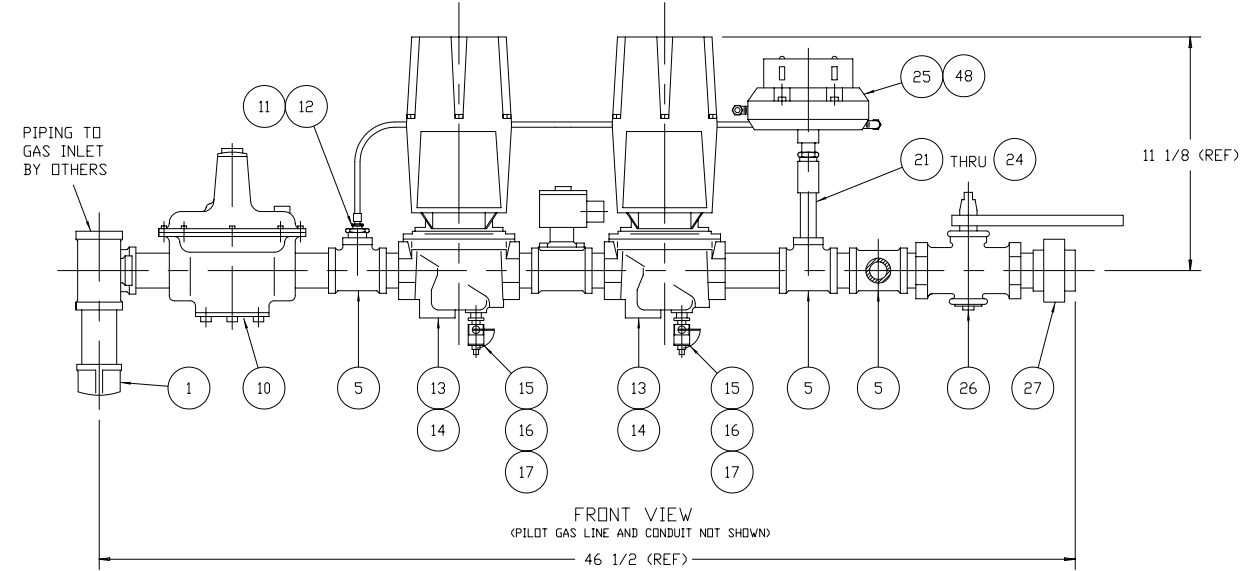
REV.	DATE	BY	CHKD.	SCALE	SHEET NO.	TOTAL
A	3 MAR 04	B. SHERIDAN	C.M.	1/8	1 OF 1	
D	3 MAR 04	B. SHERIDAN	C.M.	1/8	1 OF 1	

This design and drawing are proprietary of the Fulton Companies. The corporation does not permit their use except with prior written consent.

The item shown in this drawing may be covered by one or more patents of the Fulton Companies.

12 11 10 9 8 7 6 5 4 3 2 1

REVISIONS			
LTR	DESCRIPTION	CHECKED	APPROVAL
A	CHANGED VENT VALVE. D.M.B. 11, JAN. 1996		



ITEM	COMPONENT P/N	DESCRIPTION	UOM
1	2 - 35 - 000287	1-1/4" MALLEABLE IRON CAP	1 EA.
2	2 - 35 - 000142	1-1/4" x 4" PIPE NIPPLE, SCH 40	2 EA.
3	2 - 35 - 000232	1-1/4" TEE - MAIN GAS CONNECTION	1 EA.
4	2 - 35 - 000140	1-1/4" x 2" PIPE NIPPLE, SCH 40	9 EA.
5	2 - 35 - 000245	1/2" x 1-1/4" x 1-1/4" REDUCING TEE	4 EA.
6	2 - 30 - 000114	1-1/4" GAS COCK	1 EA.
7	2 - 30 - 000302	1-1/4" ELBOW	1 EA.
8	2 - 35 - 000248	1/4" PLUG	1 EA.
9	2 - 35 - 000141	1-1/4" x 3" PIPE NIPPLE, SCH 40	2 EA.
10	2 - 30 - 000106	1-1/4" GAS PRESSURE REGULATOR	1 EA.
11	2 - 35 - 000303	1/2" X 1/8" BUSHING	1 EA.
12	2 - 35 - 000347	X68C BRASS FITTING	1 EA.
13	2 - 40 - 000252	1-1/4" V5055C1042 VALVE BODY	2 EA.
14	2 - 40 - 000220	1-1/4" V4055D1043 ACTUATOR	2 EA.
15	2 - 30 - 000198	1/8" GAS COCK - BRS	2 EA.
16	2 - 35 - 000249	1/8" NPT PLUG - STEEL	2 EA.
17	2 - 35 - 000263	1/4" x 1/8" REDUCING BUSHING	2 EA.
18	2 - 35 - 000212	1 1/4" x 1 1/4" x 3/4" REDUCING TEE	1 EA.
19	2 - 35 - 000080	6" x 3/4" PIPE NIPPLE, SCH 40	1 EA.
20	2 - 30 - 000400	VENT VALVE	1 EA.
21	2 - 35 - 000084	1/2" X 6" NIPPLE - STD BLK	6 EA.
22	2 - 35 - 000220	1/2" COUPLING	1 EA.
23	2 - 35 - 000301	1/2" X 3/8" BUSHING	1 EA.
24	2 - 35 - 000104	3/8" X 1 1/2" NIPPLE - STD BLK	1 EA.
25	2 - 40 - 000533	HI / LO GAS PRESSURE SWITCH	1 EA.
26	2 - 30 - 000022	1 1/4" LUBRICATED PLUG COCK	1 EA.
27	2 - 35 - 000295	1-1/4" UNION	1 EA.
28	2 - 23 - 000193	RED VENT TAG (SEE NOTE 3)	3 EA.
29	2 - 30 - 000111	1/2" UL GAS BALL VLV W/T - MANUAL PILOT GAS COCK	1 EA.
30	2 - 30 - 000102	1/2" PILOT GAS REGULATOR	1 EA.
31	2 - 30 - 000298	1/2" AUTOMATIC PILOT GAS VALVE	1 EA.
32	2 - 35 - 000093	1/2" X 5" NIPPLE	1 EA.
33	2 - 20 - 000041	PILOT DRIFICE (SEE NOTE 6)	1 EA.
34	2 - 35 - 000282	1/2" UNION	1 EA.
35	2 - 11 - 000002	1/4" COPPER TUBING	2 1/2 FT.
36	2 - 35 - 000267	1/2" ELBOW - ASTM A197	1 EA.
37	2 - 45 - 000056	1/2" LOCKNUT	2 EA.
38	2 - 45 - 000061	RB2233 STAKON CONNECTOR	4 EA.
39	2 - 45 - 000034	T & B 90° CONNECTOR, 3/8" FLEX. CONDUIT	1 EA.
40	2 - 45 - 000057	3/8" FLEXIBLE CONDUIT	1 1/2 FT.
41	2 - 45 - 000062	RC6 (WIRE CONNECTOR)	4 EA.
42	2 - 45 - 000067	#1 RED ANTI-SHORT	1 EA.
43	2 - 45 - 000033	T & B STRAIGHT CONNECTOR	6 EA.
44	2 - 45 - 000134	16 GA. (YELLOW) WIRE	1 1/2 FT.
45	2 - 45 - 000136	16 GA. (BLUE) WIRE	3 FT.
46	2 - 45 - 000132	16 GA. (WHITE) WIRE	4 FT.
47	2 - 45 - 000093	2B-16 PARALLEL SPLICE	2 FT.
48	2 - 35 - 000520	X694A BRASS FITTING	1 EA.

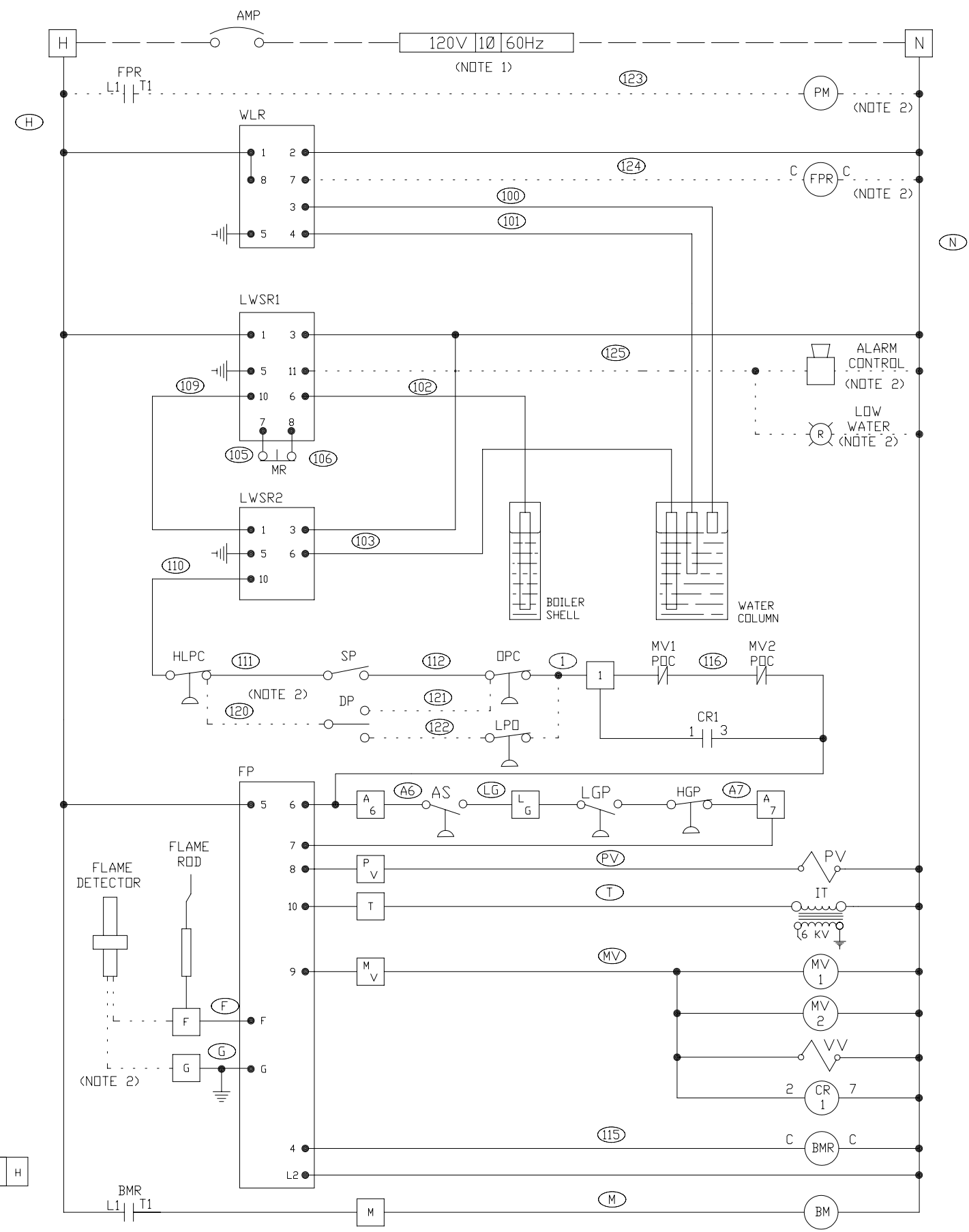
- NOTES:
- RECOMMENDED NIPPLE LENGTH. HOWEVER, NIPPLE LENGTH MAY VARY DEPENDING ON THE LENGTH OF INDIVIDUAL THREAD ENGAGEMENT.
 - NO CLOSE NIPPLES ARE USED ON GAS CONNECTIONS. ALL PIPE FITTINGS, UNLESS OTHERWISE NOTED, ARE N.P.T. SCHEDULE 40 CONFORMING TO ASTM A733-89 OR EQUIVALENT.
 - ALL COMPONENTS VENTED TO THE ATMOSPHERE WILL HAVE SEPARATE VENT LINES BY OTHERS AND ARE TO BE RED TAGGED FOR CUSTOMER NOTIFICATION AT FINAL ASSEMBLY.
 - ALL DIMENSIONS ARE IN INCHES AND ARE FOR REFERENCE ONLY. DUE TO FABRICATION VARIANCES DIMENSIONS MAY CHANGE.
 - ENGINEERING MAY APPROVE SUBSTITUTION OF DEPICTED COMPONENTS WITH AN EQUIVALENT APPROVED COMPONENT DUE TO CODE, AREA OF INSTALLATION, CUSTOMER REQUIREMENTS AND / OR AVAILABILITY OF PARTS AT THE TIME OF ASSEMBLY.
 - PILOT DRIFICE SIZE .188 (3/16 DRILL).

THIS DRAWING SUPERSEDES B54DR-0124

Fulton Boiler Works, Inc. Port and Jefferson street Box 257, Pulaski, NY, 13142		
The item shown in this drawing may be covered by one or more patents of The Fulton Companies. This design and drawing are proprietary and are the exclusive property of The Fulton Companies. The corporation does not permit their use except with prior written consent.		
20 H.P. / IRI / NEMA 1 NATURAL GAS TRAIN FOR STEAM & HOT WATER FUEL FIRED BOILERS		
DATE: 23 AUG. 1995	SIZE: D	REV. A
DWG BY: J.S.L. / J.A.A.	DWG NO. 7-54-006552	
CHECKED:	SCALE: 1/4	SHEET NO. 1 OF 1
APPROVED:		

12 11 10 9 8 7 6 5 4 3 2 1

REVISIONS			
LTR	DESCRIPTION	CHECKED / DATE	APPROVAL / DATE
H	ADDED WIRE NUMBERS B.S. 3 FEB 2005		



LEGEND

SYMBOL	DESCRIPTION
AS	AIR SAFETY SWITCH
BM	BURNER MOTOR
BMR	BURNER MOTOR STARTER RELAY
CR1	CONTROL RELAY
DP	ON/OFF SWITCH DUAL PRESSURE
FP	FLAME PROGRAMMER 7895
FPR	FEED PUMP RELAY
HGP	HIGH GAS PRESSURE SWITCH
HLPC	HIGH LIMIT PRESSURE CONTROL
IT	IGNITION TRANSFORMER
LGP	LOW GAS PRESSURE SWITCH
LPO	LOW PRESSURE OPERATION
LWSR1-2	LOW WATER SAFETY RELAY
MV1,2	MAIN GAS VALVES
MR	MANUAL RESET
OPC	OPERATING PRESSURE CONTROL
PM	FEED PUMP MOTOR
POC	PROOF OF CLOSURE
PV	PILOT GAS VALVE
SP	ON-OFF SWITCH SINGLE PRESSURE
VV	VENT VALVE
WLR	WATER LEVEL RELAY

NOTES:
 1. ALL FIELD WIRING (-----) AND FUSED SWITCHES, BY INSTALLER.
 2. DOTTED LINES (- - - -) REPRESENT OPTIONS AVAILABLE FROM FULTON.

TERMINAL BLOCK

F	G	1	M	A ₇	A ₆	L _G	P _V	T	M _V	N	N	N	H	H
---	---	---	---	----------------	----------------	----------------	----------------	---	----------------	---	---	---	---	---

UNLESS OTHERWISE SPECIFIED:
 DIMENSIONS ARE IN INCHES
 TOLERANCE ON:
 FRACTIONS ± 1/4
 TWO PLACE DECIMALS ± .01
 THREE PLACE DECIMALS ± .005
 ANGLES ± 2 DEG
 SURFACE FINISH 250 MICRONS

The item shown in this drawing may be covered by one or more patents of The Fulton Companies. This design and drawing are proprietary and are the exclusive property of The Fulton Companies. The corporation does not permit their use except with prior written consent.		The Fulton Companies 9981 Port Street, Box 257 Pulaski, New York, USA 13142			
COMPOSITE SCHEMATIC DIAGRAM OF GAS FIRED STEAM BOILER MODELS FB-004-A THRU FB-050-A 10 BURNER & PUMP RM7895 RELAY FULTON PLUG IN RELAYS					
DWG BY:	D.M.B.	DATE:	25 OCT 95	DWG NO:	B53RR-0142
CHECKED:	C.P.	DATE:	25 OCT 95	SCALE:	NONE
APPROVED:	J.H.S.	DATE:	25 OCT 95	SHEET NO:	1 OF 1