

1990 RVS 431 Ton Ammonia Chiller Plus 38 Ton Glycol Chiller

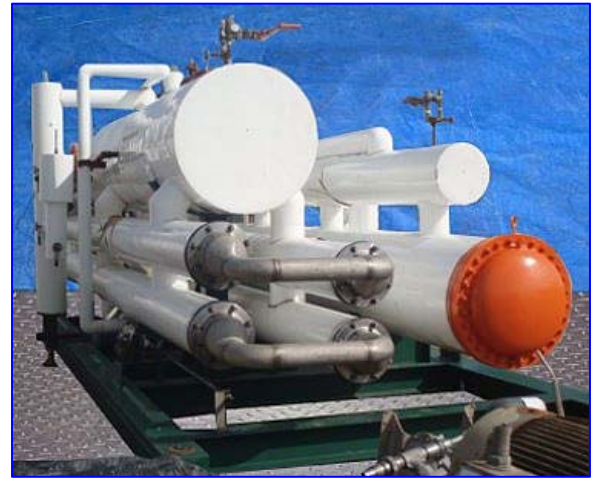
Mfg: RVS

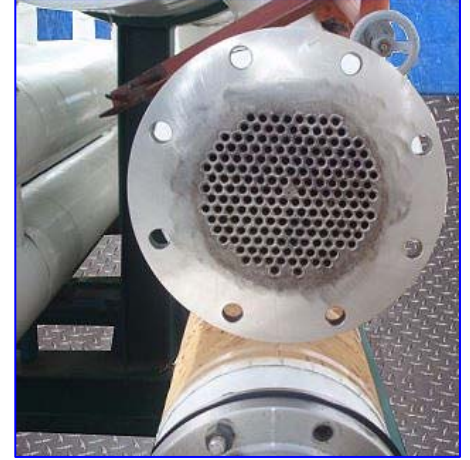
Model:

Stock No: DPPE3603.76

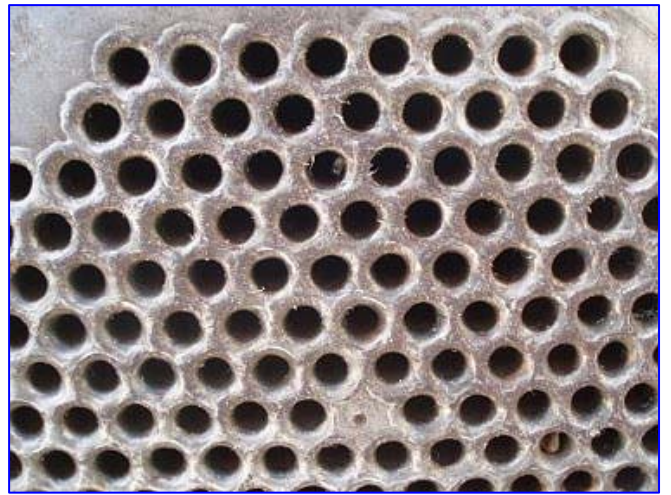
Serial No:

1990 RVS 431 Ton Ammonia Chiller Plus 38 Ton Glycol Chiller. This is a large skid system with two chillers mounted next to each other. 1st chiller: 431 ton ammonia chiller w/ (4) tube & shell chiller pack: S/N's: 90598, 90599, 90600, 90601. National Board numbers: 3217, 3218, 3219, 3220. Each chiller has (186) 3/8 inner. dia. x 24 ft. L 304 stainless steel tubes housed in a 8-5/8 in. outer dia. shell. External tube surface: 436 square ft. Rated shell side: 150 psi @ 200 °F, tube side 100 psi @ 200 °F. Capacity: shell: ammonia: Flow: 23,450 lbs. / hr. Temperature: 26°F in and 26°F out. Tube: orange juice: Flow: 47878 lbs. / hr. Temperature: 153°F in and 35°F out. The liquid ammonia feed line to chiller set is 1-1/2 in. dia. Refrigerant accumulator: S/N: 90602. 30 in. outer dia. x 18 ft. 6 in. L. Rated shell side: 150 psi @ 200°F. Horizontal oil pot: S/N: 90696. 6-5/8 in. x 20 in. Rated 150 psi @ 200°F. (1) 75 hp ID Pump. (Model 4 x 3 x 8, and 91) 3 HP ID pump model 3 x 1.5 x 8. 2nd chiller: 38 ton Glycol recirculating chiller. Nat Bd # 3222, S/N: 90603. Number of passes: 7. Number of tubes: 184. Tube dimensions: 1-1/4 in. outer dia. x 24 ft. L. Heat transfer surface area: approx. 1,227.74 sq. ft. Tube volume: 200 gal. Rated shell side 150 psi @ 200 °F, tube side 100 psi @ 200 °F. Capacity: shell: ammonia: Flow: 833 lbs. / hr. Temperature: 26°F in and 26°F out. Tube: 30% propylene glycol: Flow: 51600 lbs. / hr. Temperature: 38 °F in and 28°F out. Liquid ammonia feed line to chiller is 3/4 in. dia. Approximate dimensions: 26 ft. x 1 ft. 6 in. W 1 ft. 6 in. H. Integral refrigerant accumulator: S/N: 90604. Nat'l Bd: 3223. Approximate capacity 80 gallons. 10-3/4 in. outer dia. x 20 ft. L. MAWP: 150 psi @ 200 °F. MDMT: -20 °F @ 150 psi. Approximate dimensions: 20 ft. 6 in. L x 1 ft. 3 in. W x 1 ft. 3 in. H. Horizontal oil pot: National Board no: 90605. 6-5/8 in. x 20 in. Rated 150 psi @ 200°F. This was previously installed with Tropicana in orange juice processing duty. Overall dimensions: 26 ft. 7 in. L x 10 ft. 5 in. W x 10 ft. 4 in. H.(ACN1400).









The following pictures show the exact unit prior to removal.

