

1993 FES 1335B / Howden WRV 321/1.93 Rotary Screw Compressor Package - 500 HP

Mfg: FES / Howden

Model: 1335B / WRV 321/1.93

Stock No: DTTC2062

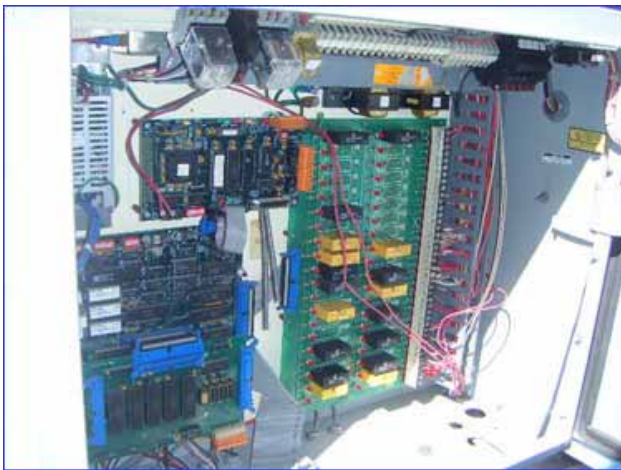
Serial No: MK4E – 113

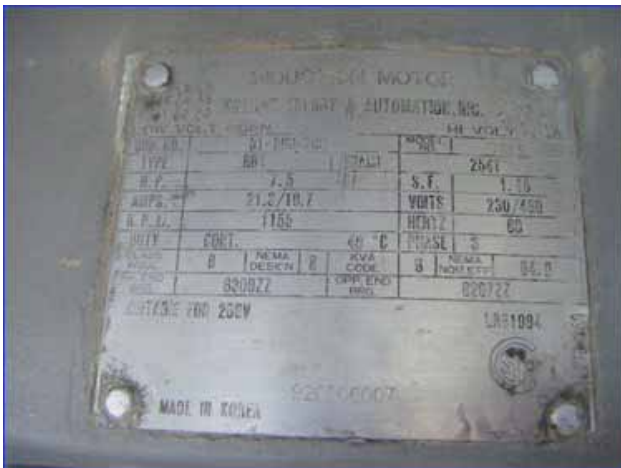
1993 FES 1335B / Howden WRV 321/1.93 Rotary Screw Compressor Package. Model: 1335B / WRV 321/1.93. S/N: MK4E-113. FES contract: 93147031. Refrigerant: Last used with R-717 (ammonia). Howden rotary screw compressor, Model: WRV 321/1.93, S/N: MK4E-113. Nominal capacity: 500 tons. Vi setting: 2.6. Displacement: 3,758 cfm. Leak pressure test: 313 psig. Hydrostatic test pressure: 470 psig. Westinghouse World Series electric motor, 500 Hp, 3572 rpm, 4160 V, 60 Hz, 3 phase. 1993 Oil separator, S/N: 930196, Nat'l Bd: 6424, MAWP: 250 psi at 200°F, MDMT: -20°F at 250 psi. FES oil cooler, Model: COOSE1530A2, S/N: 1191292. Shell MAWP: 400 psi at 200°F, MDMT: -18°F at 400 psi. Tube, MAWP: 250 psi at 200°F, MDMT: -18°F at 250 psi. Viking rotary positive displacement pump, Model: AL4195, S/N: 11320887. Siemens motor: 7.5 Hp, 1155 rpm, 230/460 V, 21.3/10.7 amps, 60 Hz, 3 phase. FES Micro II E control panel. Inlet: (1) 10 in. dia. refrigerant suction port. Outlet: (1) 6 in. dia. refrigerant discharge port. Compressor run time: 380.3 hrs. since rebuild by Stellar Group. Overall dimensions: 16 ft. 1 in. L x 5 ft. 2 in. W x 9 ft. 10 in. H. (ACN1330).











Note: the following pictures show the exact unit prior to removal.



AMMONIA COMPRESSOR
TIMMS PAGE ONE INFORMATION

Asset Number: 18128
Refrigeration I.D.: #8 L.S.-S
Description: SCREW COMPRESSOR
Manufacturer: FES
Model Number: 1335B
Serial number: 113

TIMMS NAMEPLATE I.D. INFORMATION

Year Installed: 1993
Capacity in tons of Refrigeration: 497 0/374.2
Compressor Oil: Texaco Cupella WF68
Critical Operating Parameters
Max Oil Temperature: Max Oil Pressure:
Min Oil Temperature: Min Oil Pressure:
Max Discharge Temp: Max Discharge Pressure:
Min Discharge Temp:

Compressor Motor
Manufacturer:
Serial Number: 5806AA-1
Volts: 4160
Horsepower: 500
Bearing Lubrication: Texaco R&O 32 Oil

Oil Separator
National Board Number: 6424
Year Vessel Stamped: 1992
Dual Safeties? (yes/no): YES
Safety's Manufacturer: R

Max Pressure: 250
Max Temperature: 200 F
Min Temperature: -20 F
Set Pressure: 250
Safety Port Size: 1.0

Oil Cooler (1 L.S.-S through 8 L.S.-S)
National Board Number: 21196
Year Vessel Stamped: 1992
Dual Safeties? (yes/no): YES
Safety's Manufacturer: S

Max Pressure: 250
Max Temperature: 200 F
Min Temperature: 18 F
Set Pressure: 250
Safety Port Size: .5