

FES/Mycom Screw Booster Compressor Package-300 HP

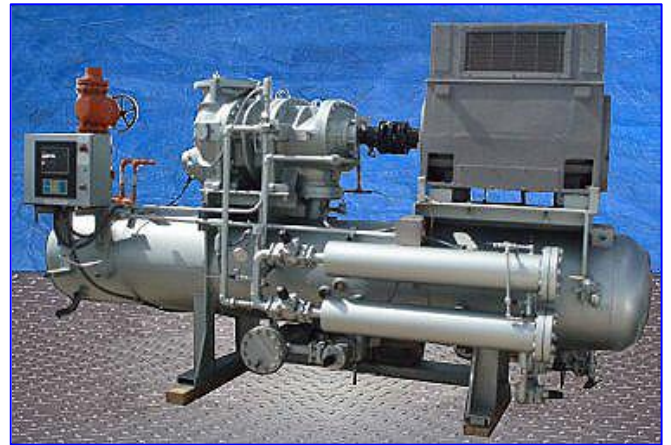
Mfg: FES

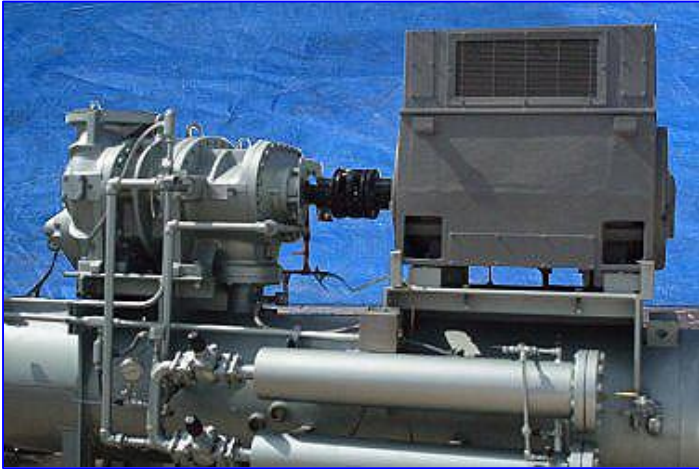
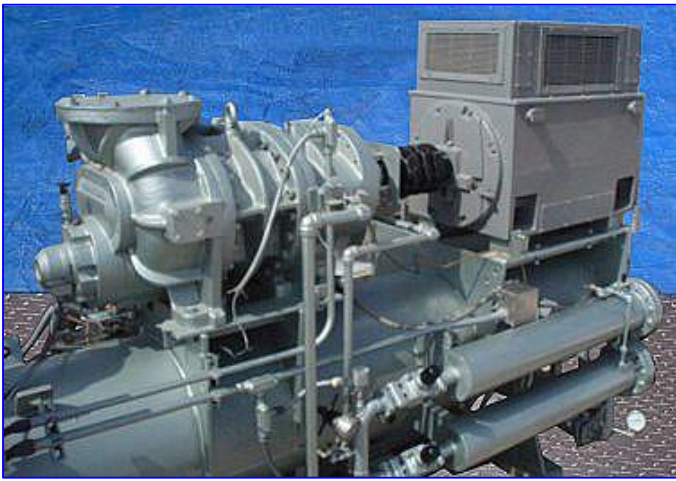
Model: 320 SU-L

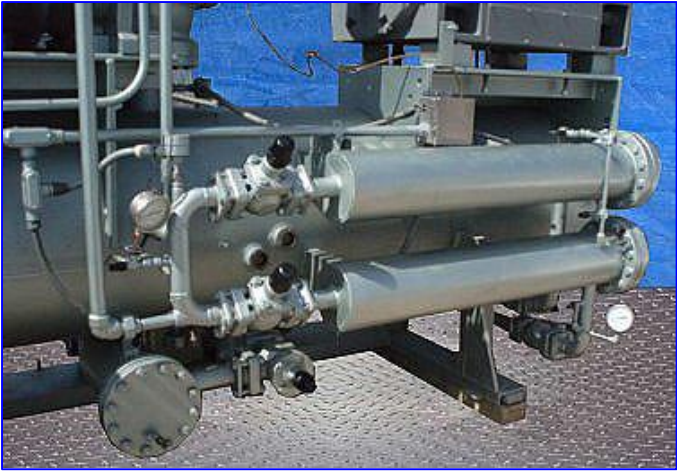
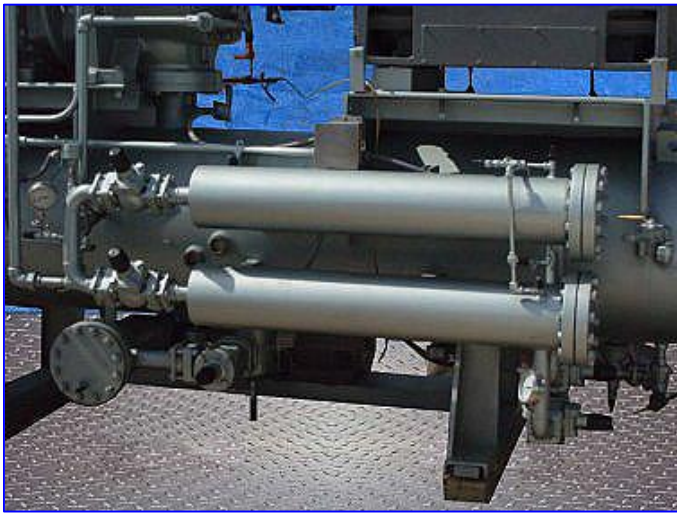
Stock No: DTTC800.

Serial No: 3251127

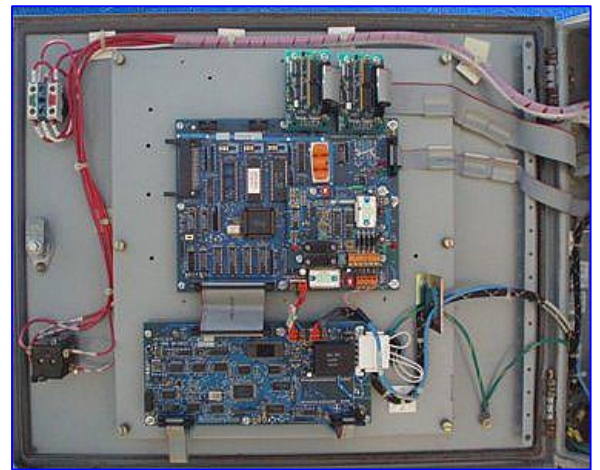
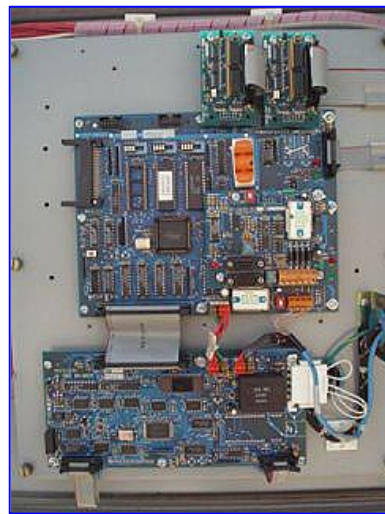
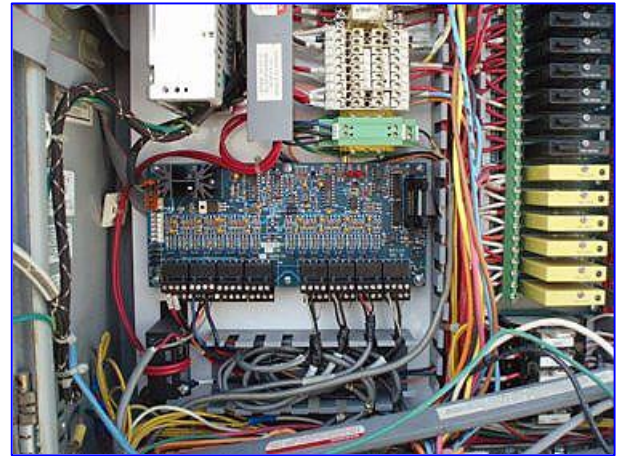
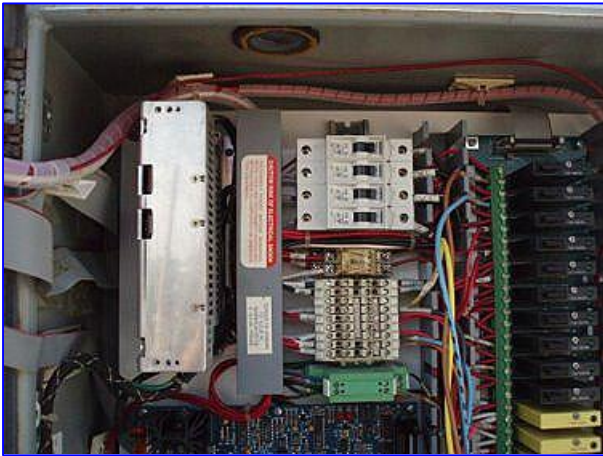
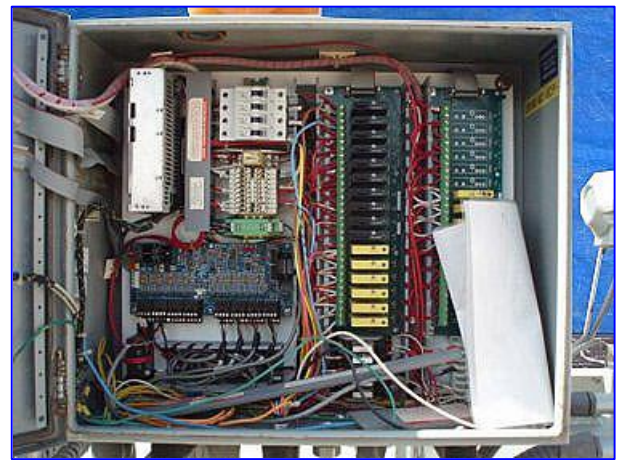
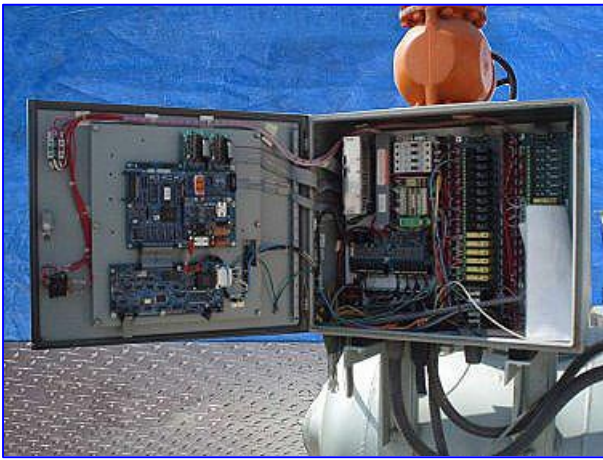
FES/Mycom Screw Booster Compressor Package. Model: 320 SU-L. S/N: 3251127. Refrig: ammonia. Leak test pressure: 313 psig. Hydrostatic test pressure: 470 psig. Suction pressure: 12 in. Hg @ -45 °F. Discharge pressure: 33 psig @ 20 °F. Capacity TR: 188.0 Ton. Brake hp: 245.0. Bhp per Ton: 1.303. General Electric Motor, 300 hp, 3570 rpm, 2400/4160 V, 65/35 amps, 60 Hz, 3 phase. Viking Pump, Model: AL195, S/N: 1032807. Baldor Industrial Motor, 7.5 hp, 1160 rpm, 22.2/11.1 amps, 60 Hz, 3 phase. Mypro-M Mycom controller. Overall dimensions: 12 ft. 2 in. L x 56 in. W x 92 in. H. (SR600) Run less than one year since rebuild.

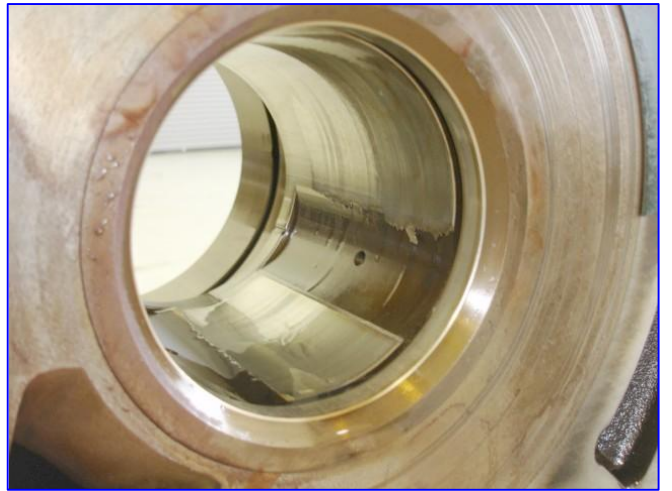
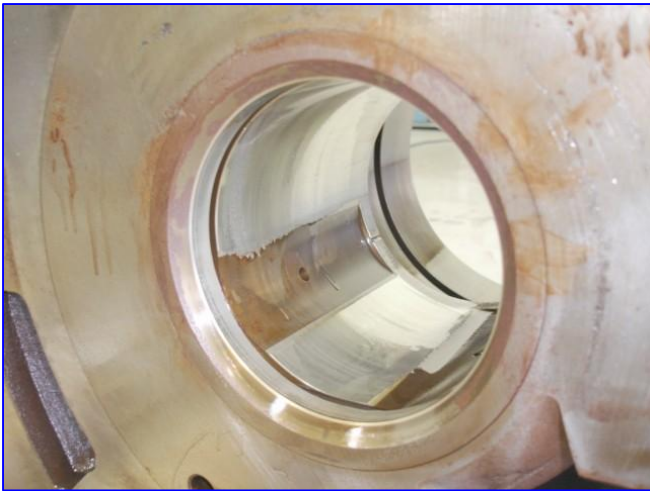
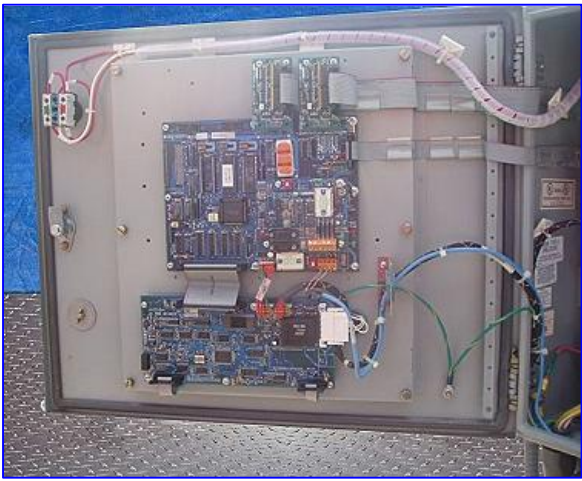


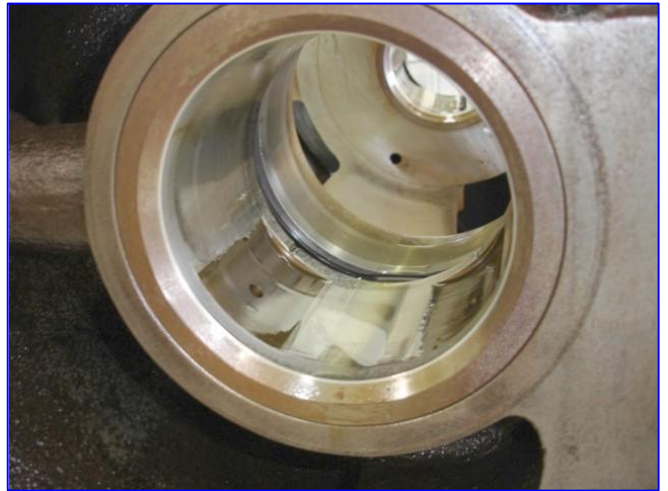
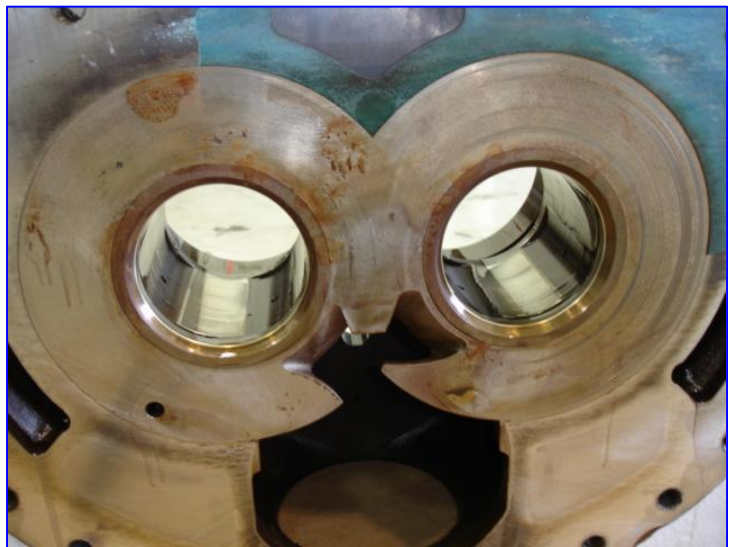


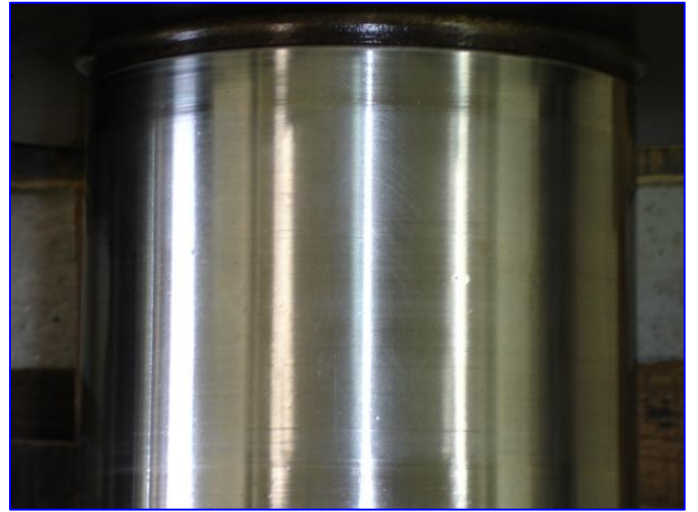
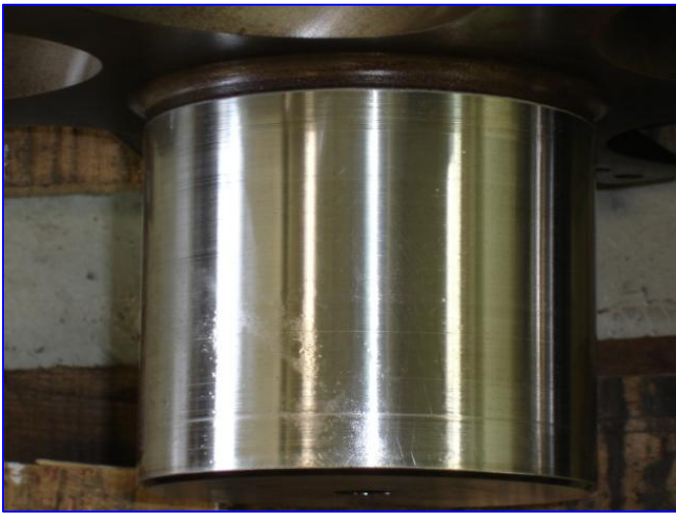


SOME PROBES ARE NOT A THERMO WELLS









SCREW COMPRESSOR INSPECTION REPORT

Customer Tropicana Warranty / Service 560-22490

Compressor Type Mycom Model # 320SU-L Serial # 3251127 X#

Customer Report and/or Complaint :

Analysis of Failure

Date of Inspection 7-23-05 Inspected by M.M.

TORQUES

Outer Race (M) OK Inner Race (M) OK

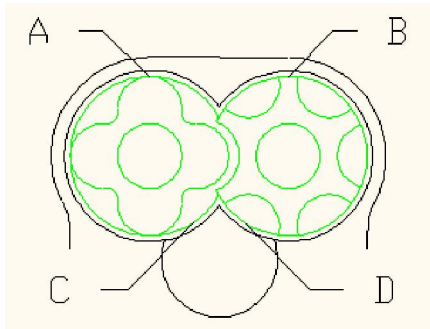
Outer Race (F) OK Inner Race (F) OK

CLEARANCES

Axial Float (M) OK Suction End (M) OK Discharge End (M) .003

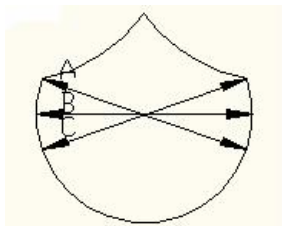
Axial Float (F) OK Suction End (F) OK Discharge End (F) .003

Runout (Male Shaft) .000



- (A) Male rotor to cylinder discharge end .011
- (B) Female rotor to cylinder discharge end .013
- (C) Male rotor to slide valve .005
- (D) Female rotor to slide valve .003

SLIDE VALVE



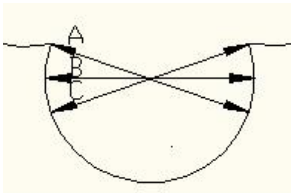
Suction End
 (A) 8.096
 (B) 8.096
 (C) 8.096

Discharge End
8.096
8.096
8.096

Slide valve VI 3.6

Double or Single hyd. Double

SLIDE VALVE CYLINDER



Suction End
 (A) 8.101
 (B) 8.101
 (C) 8.101

Discharge End
8.101
8.101
8.101

SEAL INFORMATION:

Dunham Bush Howden 8 8B 9B

DRIVE RING CONDITION

MYCOM

V-Ring Style

BOS (V-series)

FES

SEAL CONDITION & JOURNAL DIAMETER OK 3.543

ROTOR CONDITION : (M) Good

(F) Good

ROTOR JOURNAL CONDITION: (M) OK Disc. 5.011 Suct. 5.011

(F) OK Disc. 5.011 Suct. 5.011

GUIDE BLOCK WITH CLEARANCES : .001 Standard Oversized

GUIDE PIN CONDITION OK

SLIDE VALVE CONDITION OK **CHROMED** XX **METALIZED**

SLIDE VALVE SPINDLE OK

THRUST BEARING CONDITION

(M) OK

(F) OK

THRUST BEARING RETAINER

(M) OK

(F) OK

SUCTION HEAD OK

SUCTION SLEEVE BEARINGS (M) Worn (F) Worn

DISCHARGE HEAD Faced off from previous repair

DISCHARGE SLEEVE BEARINGS (M) Worn (F) Worn

LIQUID INJECTION ANGLE No I1 Port only 59°

UNLOADER PISTON & CYLINDER CONDITION OK

END COVER INJECTION TUBE ASSEMBLY OK

BALANCE PISTON & SLEEVE CONDITION W/CLEARANCES Some slight wear .002

INDICATOR ASSEMBLY CONDITION OK Missing switches

APPROXIMATE OPERATION HOURS N/A

FLANGES PRESENT:

Suction Yes Discharge Yes

REMARKS

Seal Housing only had 4 Bolts Discharge

Sleeve Bearings may have to be faced

SCREW COMPRESSOR BUILD SHEET

CUSTOMER Tropicana

WARRANT/SERVICE # 560-22490

REPAIR DATE 8/13/2005

REPAIRED BY M.M. & B.M.

COMPRESSOR TYPE Mycom MODEL 320SU-L SERIAL # 3251127

ASSEMBLED CLEARANCES:

MALE ROTOR: DISCHARGE .0045

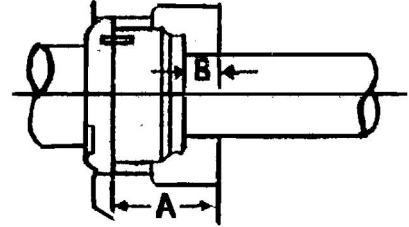
FEMALE ROTOR: DISCHARGE .004

RUNOUT .002

D/B SEAL

A _____

B _____



TYPE OF SEAL

D/B	MYCOM
8 _____	CRANE _____
8B _____	MYCOM <u>✓</u>
9B _____	BOS _____

TABS BENT OVER Yes

SLIDE VALVE TEST WITH AIR PRESSURE OK

THRUST BEARING MANUFACTURE & SIZE: Std.

PROBLEMS BUILDING MACHINE: OK

PARTS ADDED TO MACHINE:

SEAL PARTS

LOCKNUTS & LOCKWASHERS

THRUST BEARINGS

BALANCE PISTON & SLEEVE

CAPACITY & LIQUID INJ.

SLIDE VALVE Vi 2.6

DISCHARGE HEAD Vi 2.6

LIQUID INJ. ANGLE Low Port Only

SLIDE VALVE STROKE N/A

LEAK TEST OK

GASKETS & O-RINGS

GUIDE BLOCK & PIN

SLEEVE BEARINGS

PARTS MACHINED & METAL REMOVED: None